

BERNAT® C2C CROCHET DREAMY CLOUDS BABY BLANKET



CROCHET | SKILL LEVEL: **EASY**

ABBREVIATIONS

Approx = Approximately

Beg = Begin(ning)

Ch = Chain(s)

Cont = Continu(e)(ity)

Dc = Double crochet

Rem = Remain(s)

Rep = Repeat

Rnd(s) = Round(s)

RS = Right side

Sl st = Slip stitch

Sp = Space

St(s) = Stitch(es)

Yoh = Yarn over hook

MEASUREMENTS

Approx 43 x 45" [109 x 114.5 cm].

GAUGE

8 dc and 6 rows = 4" [10 cm].

INSTRUCTIONS

Notes:

- Blanket is worked diagonally from corner to corner.
- When working from chart, wind small balls of the colors to be used, one for each separate area of color in the design. Start new colors at appropriate points.
- To change color, work to last 2 loops on hook, yoh with new color. Pull through 2 loops on hook to complete st and proceed in new color.

With MC, ch 6.

1st row: (RS). 1 dc in 4th ch from hook (counts as 2 dc). 1 dc in each of last 2 ch. Turn. 1 block made.

2nd row: Ch 6. 1 dc in 4th ch from hook. 1 dc in each of next 2 ch - beg block made. (Sl st. Ch 3. 3 dc) in next ch-3 sp - block made. Turn. 2 blocks.

3rd row: Beg block. *Block in next ch-3 sp. Rep from * to end of row. Turn. 3 blocks.

Keeping cont of color changes in Chart (each square on grid represents 1 block), rep last row until 33rd row of Chart is complete. 33 blocks. See chart on page 2.

MATERIALS

Bernat® Pipsqueak™ (3.5 oz/100 g; 101 yds/92 m)

Main Color (MC) Baby Blue (59128) **5 balls or 493 yds/451 m**

Contrast A Whitey White (59005) **3 balls or 274 yds/250 m**

Size U.S. J/10 [6 mm] crochet hook **or size needed to obtain gauge.**

BERNAT® C2C CROCHET DREAMY CLOUDS BABY BLANKET

Keeping cont of Chart, proceed as follows to work sides even:

34th row: Beg block. *Block in next ch-3 sp. Rep from * to last ch-3 sp. Sl st in last ch-3 sp. (**Do not** make a block.) Turn.

Keeping cont of Chart, proceed as follows to dec corner:

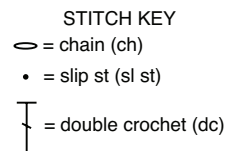
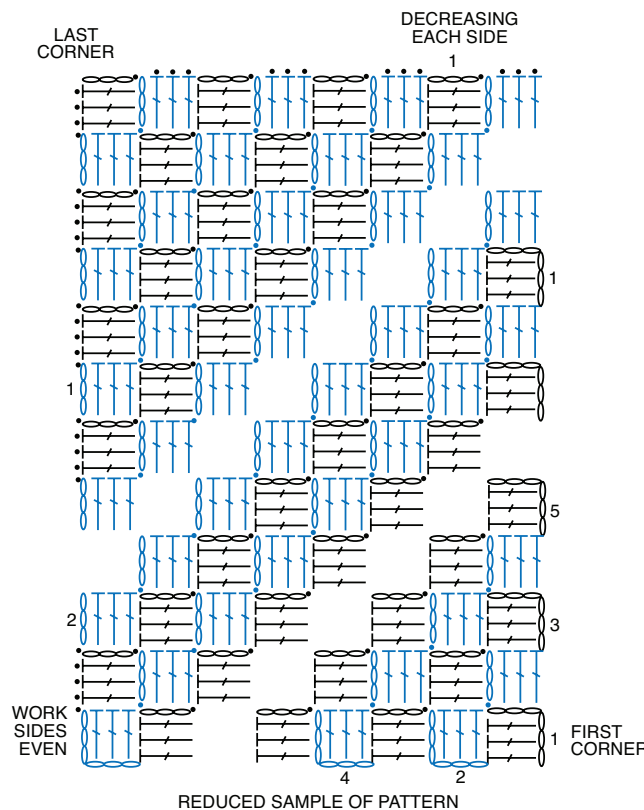
35th row: Sl st in each of first 3 dc. *Block in next ch-3 sp. Rep from * to last ch-3 sp. Sl st in last ch-3 sp. (**Do not** make a block.) Turn.

Keeping cont of Chart, rep last row until 1 block rem. Fasten off.

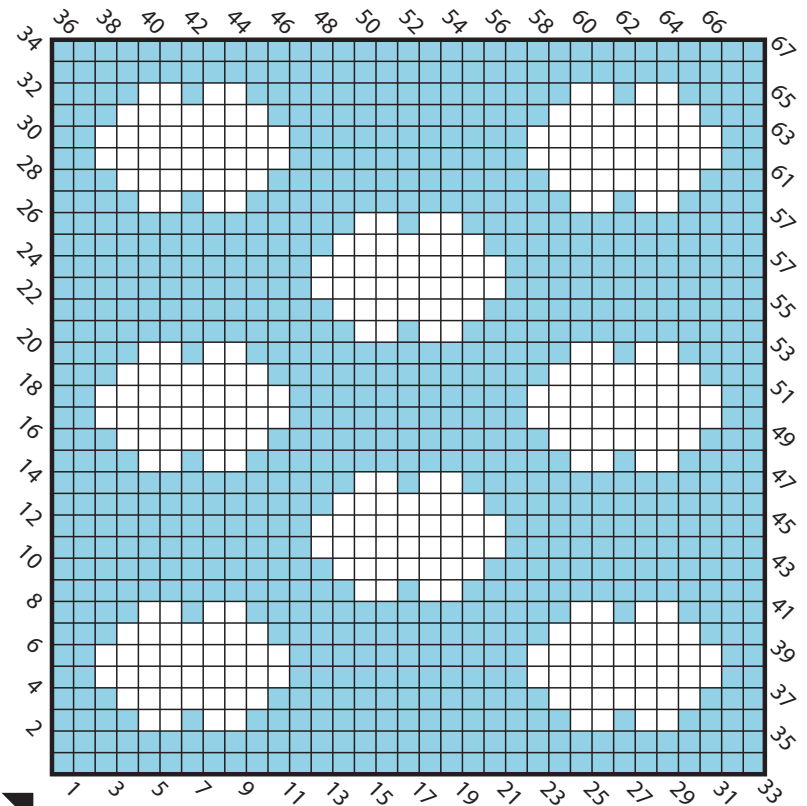
Edging: With RS facing, join A with sl st between any 2 blocks along edge.

1st rnd: Ch 3. *Sl st between next 2 blocks. Ch 3. Rep from * around, working (Sl st. Ch 3. Sl st) in each corner. Join with sl st in same sp as first sl st.

2nd rnd: Sl st in first ch-3 sp. Ch 3 (counts as dc). 2 dc in same ch-3 sp. *3 dc in next ch-3 sp. Rep from * to around, working (3 dc. Ch 1. 3 dc) in each corner ch-3 sp. Join with sl st to top of beg ch-3. Fasten off.



Chart



Key

■ Main Color (MC) □ Contrast A