



CROCHET | SKILL LEVEL: INTERMEDIATE

ABBREVIATIONS

Approx =

Approximately

Beg = Beginning

Ch = Chain(s)

Dc = Double crochet

Pat = Pattern

Rep = Repeat

Rnd(s) = Round(s)

RS = Right side

Sc = Single Crochet

Sl st = Slip stitch

St(s) = Stitch(es)

WS = Wrong side

MEASUREMENT

Approx 45" [114.5 cm] square.

GAUGE

7 sts and 3 rows = 4" [10 cm] in pattern.

INSTRUCTIONS

Note: Ch-3 at beg of rows counts as dc.

With A, ch 116. (Foundation ch multiple of 22 ch + 6) See Chart on page 2.

Foundation row: (RS). 1 dc in 4th ch from hook. 1 dc in next ch. (Ch 3. Sl st in next ch. Skip next 3 ch. 1 dc in each of next 2 ch) twice. Skip next 2 ch. Slip st in next ch. Ch 3. 1 dc in each of next 2 ch. Skip next 2 ch. Slip st in next ch. *Ch 3. 1 dc in each

of next 2 ch. Ch 3. Slip st in next ch. Skip next 3 ch. 1 dc in each of next 2 ch. Ch 3. Slip st in next ch. Skip next 3 ch. 1 dc in each of next 2 ch. Skip next 2 ch. Sl st in next ch. Ch 3. 1 dc in each of next 2 ch. Skip next 2 ch. Slip st in next ch. Rep from * to last 3 ch. Ch 3. 1 dc in each of last 3 ch. Turn.

1st row: Ch 3. 1 dc in each of next 2 dc. *(Ch 3. Sl st in top of ch-3 from previous row. 1 dc in each of next 2 dc) twice. (Sl st in top of ch-3 from previous row. Ch 3. 1 dc in each of next 2 dc) twice. Rep from * to last st. 1 dc in top of ch-3 from previous row. Join B. Turn.

2nd and 3rd rows: With B, as 1st row.

4th and 5th rows: With A, as 1st row.

MATERIALS

Bernat® Baby Blanket™ (3.5 oz/100 g; 72 yds/65 m)

Contrast A Seafoam (03736) **6 balls or 430 yds/393 m**

Contrast B Little Sand Castles (03011) **6 balls or 370 yds/337 m**

Size U.S. L/11 (8 mm) Susan Bates® Silvalume® crochet hook **or size needed to obtain gauge.** Susan Bates® yarn needle.

Rep last 4 rows for pat until work from beg measures approx 38" [96.5 cm] ending on a 3rd row. Fasten off.

Fill-in row 1: (RS). Join A with sl st to 4th st of last row (top of ch-3). 1 dc in each of next 2 dc. Ch 3. Sl st in top of ch-3 from previous row. 1 dc in each of next 2 dc. Sl st in top of ch-3 from previous row. Ch 3. 1 dc in each of next 2 dc. Sl st in top of ch-3 from previous row. Turn.

Fill-in row 2: Sl st in each of first 2 dc and top of next ch-3. 1 dc in each of next 2 dc. Sl st in top of ch-3 from previous row. Fasten off.

Rep Fill-in rows 1 and 2 across last row of Blanket, filling in gaps. Rep Fill-in rows 1 and 2 across bottom edge of Blanket, working into foundation ch.

Fill-in Right Corner row 1: With WS facing and Blanket upside down, join B with sl st to first st (3rd ch of foundation ch). (Ch 3. 1 dc in each of next 2 ch. Skip next 2 ch. Sl st in next ch) twice. Turn.

Fill-in Right Corner row 2: Sl st in each of first 2 dc and top of ch-3. 1 dc in each of next 2 dc. 1 dc in top of ch-3. Fasten off.

Fill-in Left Corner row 1: With WS facing and Blanket upside down, join B with sl st to 11th foundation ch from left edge (at top-right of area to be filled-in). 1 dc in each of next 2 ch. Ch 3. Sl st in top of ch-3. 1 dc in each of next 3 ch. Turn.

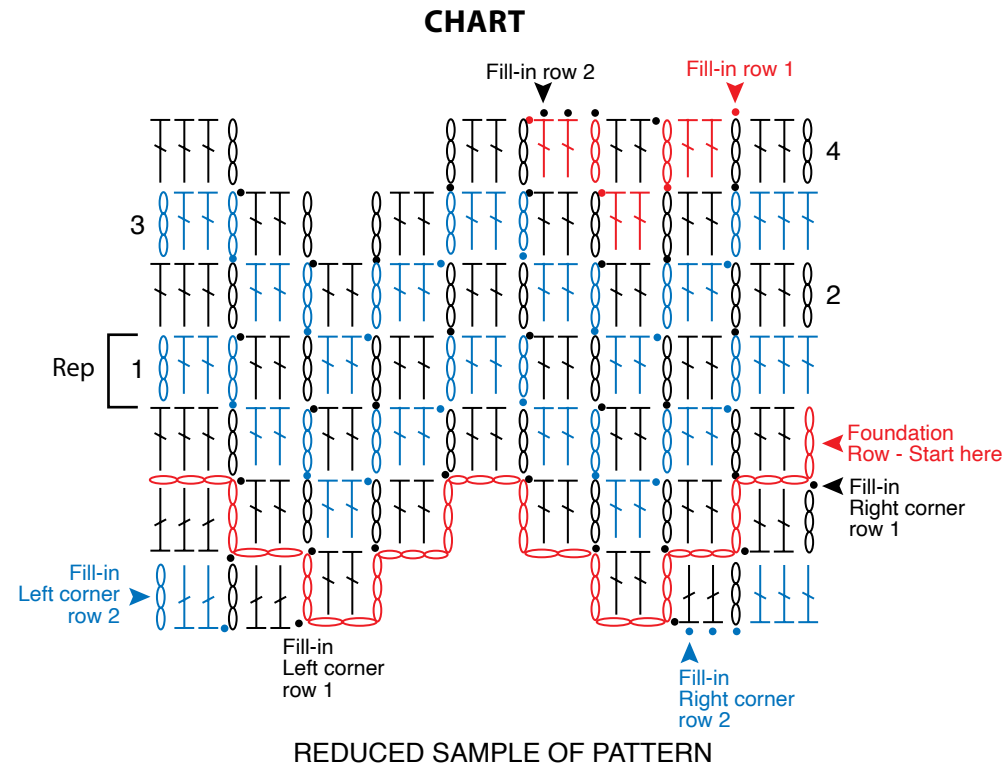
Fill-in Left Corner row 1: Ch 3. 1 dc in each of next 2 dc. Sl st in top of next ch-3. Fasten off.

Border: 1st rnd: (RS). Join A with sl st to any corner of Blanket. Ch 1. Work sc evenly around working 3 sc in each corner. Join with sl st to first sc.

2nd and 3rd rnds: With A, ch 3. Work dc evenly around, working 5 dc in each corner. Join with sl st to top of ch-3, joining B at end of 3rd rnd.

4th rnd: With B, ch 1. 1 sc in each dc around, working 3 sc in each corner. Join with sl st to first sc.

5th rnd: With B, ch 1. Working from **left to right** instead of **right to left** as usual, work 1 reverse sc in each sc around. Join with sl st to first sc. Fasten off.



STITCH KEY

- = chain (ch)
- = slip st (sl st)
- ⌋ = double crochet (dc)