

BERNAT® STAR OF THE SHOW CROCHET BLANKET



 CROCHET | SKILL LEVEL: **EASY**

ABBREVIATIONS

Approx = Approximately

Ch = Chain(s)

Dc = Double crochet

Hdc = Half double crochet

Rep = Repeat

Rnd(s) = Round(s)

RS = Right side

Sl st = Slip stitch

Sp = Space

St(s) = Stitch(es)

WS = Wrong side

MEASUREMENTS

Approx 34" [86.5 cm] wide x 46" [117 cm] long.

GAUGE

7 dc and 3 rows = 4" [10 cm].

INSTRUCTIONS

Note: Ch 3 at beg of row counts as dc.

Ch 71. See diagram on page 2.

1st row: (RS). 1 dc in 4th ch from hook (counts as 2 dc). 1 dc in each ch to end of ch. Turn. 69 dc.

2nd row: Ch 3. 1 dc in each dc to end of row. Turn.

3rd row: Ch 3. 1 dc in each of next 2 dc. *(Ch 1. Skip next dc. 1 dc in next dc) twice. 1 dc in each of next 10 dc. (Ch 1. Skip next dc. 1 dc in next dc) twice.** 1 dc in each of next 5 dc. Rep

from * once, then from * to ** once more. 1 dc in each of last 2 dc. Turn.

4th row: Ch 3. 1 dc in each of next 2 dc. *Ch 1. Skip next st. 1 dc in each of next 3 sts. Ch 1. Skip next dc. 1 dc in each of next 7 dc. Ch 1. Skip next dc. 1 dc in each of next 3 sts. Ch 1. Skip next st.** 1 dc in each of next 6 dc. Rep from * once, then from * to ** once more. 1 dc in each of last 3 dc. Turn.

5th row: Ch 3. 1 dc in each of next 3 sts. *Ch 1. Skip next dc. 1 dc in each of next 4 sts. Ch 1. Skip next dc. 1 dc in each of next 3 dc. Ch 1. Skip next dc. 1 dc in each of next 4 sts. Ch 1. Skip next dc.** 1 dc in each of next 8 sts. Rep from * once, then from * to ** once more. 1 dc in each of last 4 sts. Turn.

MATERIALS

Bernat® Baby Blanket™ (10.5 oz/300 g; 220 yds/201 m)
White (04005) **3 balls or 590 yds/540 m**

Size U.S. L/11 (8 mm) crochet hook **or size needed to obtain gauge.**

BERNAT® STAR OF THE SHOW CROCHET BLANKET

6th row: Ch 3. 1 dc in each of next 4 sts. *Ch 1. Skip next dc. 1 dc in each of next 5 sts. Ch 1. Skip next dc. 1 dc in each of next 5 sts. Ch 1. Skip next dc.** 1 dc in each of next 10 sts. Rep from * once, then from * to ** once more. 1 dc in each of last 5 sts. Turn.

7th row: Ch 3. 1 dc in each of next 5 sts. *Ch 1. Skip next dc. 1 dc in each of next 9 sts. Ch 1. Skip next dc.** 1 dc in each of next 12 sts. Rep from * once, then from * to ** once more. 1 dc in each of last 6 sts. Turn.

8th row: Ch 3. 1 dc in each of next 3 dc. *Ch 1. Skip next dc. 1 dc in each of next 13 sts. Ch 1. Skip next dc.** 1 dc in each of next 8 dc. Rep from * once, then from * to ** once more. 1 dc in each of last 4 dc. Turn.

9th row: Ch 3. 1 dc in next dc. *Ch 1. Skip next dc. 1 dc in each of next 17 sts. Ch 1. Skip next dc. 1 dc in each of next 4 dc. Rep from * once, then from * to ** once more. 1 dc in each of last 2 dc. Turn.

10th row: Ch 3. *(Ch 1. Skip next st. 1 dc in next st) 4 times. 1 dc in each of next 6 dc. (Ch 1. Skip next

st. 1 dc in next st) 4 times. 1 dc in next dc. Rep from * to end of row. Turn.

11th row: Ch 3. 1 dc in each of next 7 sts. *Ch 1. Skip next dc. 1 dc in each of next 5 dc. Ch 1. Skip next dc.** 1 dc in each of next 16 sts. Rep from * once, then from * to ** once more. 1 dc in each of last 8 sts. Turn.

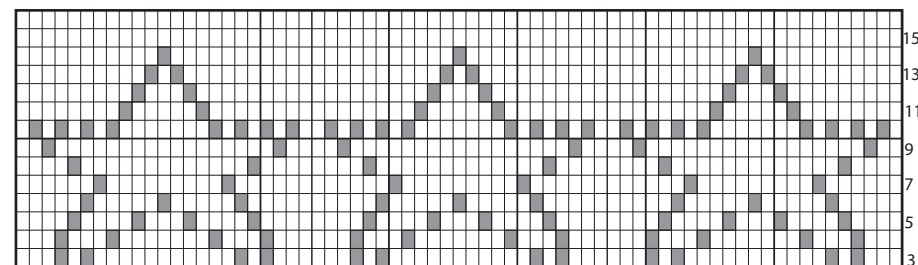
12th row: Ch 3. 1 dc in each of next 8 sts. *Ch 1. Skip next dc. 1 dc in each of next 3 dc. Ch 1. Skip next dc.** 1 dc in each of next 18 sts. Rep from * once, then from * to ** once more. 1 dc in each of last 9 sts. Turn.

13th row: Ch 3. 1 dc in each of next 9 sts. *Ch 1. Skip next dc. 1 dc in next dc. Ch 1. Skip next dc.** 1 dc in each of next 20 sts. Rep from * once, then from * to ** once more. 1 dc in each of last 10 sts. Turn.

14th row: Ch 3. 1 dc in each of next 10 sts. *Ch 1. Skip next dc. 1 dc in each of next 22 sts. Rep from * once, then from * to ** once more. 1 dc in each of last 11 sts. Turn.

15th and 16th rows: Ch 3 . 1 dc in each st to end of row. Turn. Rep 3rd to 16th rows twice more. Fasten off at end of last row.

Edging: With RS facing, join yarn with sl st to any corner. Ch 2 (counts as hdc). 2 hdc in same corner as last sl st. Work 1 rnd of hdc evenly around edges of Blanket, having 3 hdc in each corner. Join with sl st to first hdc. Fasten off.



Key
 ■ = Ch-1 sp
 □ = 1 dc

Start Here