



MATERIALS

Bernat® Softee® Baby Stripes™ (120 g/4.2 oz; 262 m/287 yds)
Sand Pebbles Stripe (53001) **5 balls**

Size U.S. G/6 (4 mm) crochet hook **or size needed to obtain gauge.**
Stitch markers. 1 button 1½" [4 cm] diameter.



CROCHET | SKILL LEVEL: **EASY**

ABBREVIATIONS

Approx = Approximately
Beg = Beginning
Ch = Chain(s)
Dc = Double crochet

Pat = Pattern
PM = Place marker
Rep = Repeat
RS = Right side
Sc = Single crochet

Sl st = Slip stitch
Sp(s) = Space(s)
WS = Wrong side

MEASUREMENTS

One size to fit baby 3-6 mos.

Unfolded: Approx 25" [63.5 cm] square.

Folded: Approx 35" [89 cm] long (from top of hood to bottom point) x 14" [35.5 cm] wide.

GAUGE

16 sc and 19 rows = 4" [10 cm]

INSTRUCTIONS

Note: Each piece is reversible. There is no RS or WS.

Front and Back (make alike)

Ch 100. (Foundation ch multiple 4 + 1) See diagram on page 2.

1st row: 3 dc in 4th ch from hook (counts as 4 dc). *Skip next 3 ch. (Sl st. Ch 3. 3 dc) in next ch. Rep from * to last 4 ch. Skip next 3 ch. Sl st in last ch. Turn. 24 groups of 3-dc.

2nd row: Ch 3. 3 dc in first sl st. *Skip next 3 dc. (Sl st. Ch 3. 3 dc) in next ch-3 sp. Rep from * to last

3 dc and ch-3 sp. Skip next 3 dc. Sl st in last ch-3 sp. Turn. Rep last row for pat until work from beg measures approx 25" [63.5 cm]. Fasten off.

PM 8" [20.5 cm] down from top corners on both sides.

Following diagram on page 2, sew 2 bottom sides of Front and Back and 2 top sides to markers. Work running stitch down from markers to form Sack.

Fold top corner of Front to RS and secure with button.

Hood

Note: Hood is worked from corner to corner. See diagram on page 2.

Ch 6.

1st row: 1 dc in 4th ch from hook (counts as 2 dc). 1 dc in each of last 2 ch. 4 dc. Turn.

BERNAT® CROCHET ENVELOPE BABY SACK | CROCHET

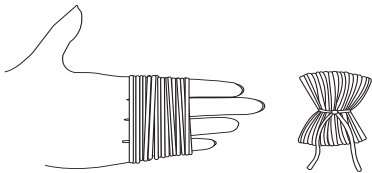
2nd row: Ch 6. 1 dc in 4th ch from hook. 1 dc in each of next 2 ch. Skip next 3 dc. (Sl st. Ch 3. 3 dc) in next ch-3 sp. Turn.

3rd row: Ch 6. 1 dc in 4th ch from hook. 1 dc in each of next 2 ch. *Skip next 3 dc. (Sl st. Ch 3. 3 dc) in next ch-3 sp. Rep from * to end of row. Turn.

Rep last row until side edge measures 9" [23 cm]. Fasten off.

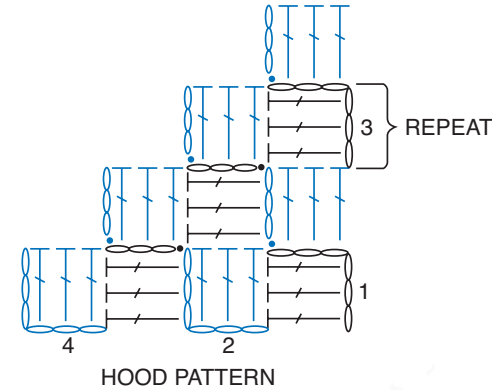
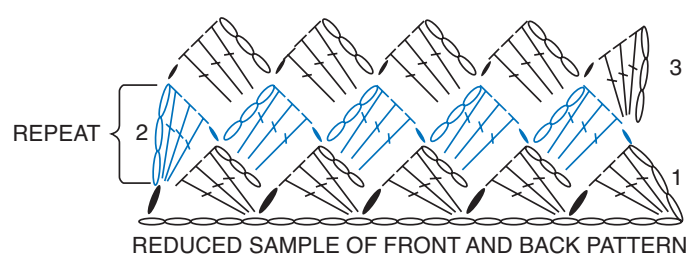
Sew Hood to top corner of Back.

Pompom: (make 2). Wind yarn around 4 fingers approx 140 times. Remove from fingers and tie tightly in center. Cut through each side of loops. Trim to a smooth round shape.



Ties (make 4)
Ch 25. Fasten off.

Sew Pompom to each end of 2 Ties (see Diagram).
Sew Ties as shown in Diagram.



- STITCH KEY**
- = chain (ch)
 - = slip stitch (sl st)
 - ⊥ = single crochet (sc)
 - ⌋ = double crochet (dc)

