



 CROCHET | SKILL LEVEL: INTERMEDIATE

MEASUREMENTS

Approx 35" x 39" [89 x 99 cm].

GAUGE

9 sc and 10 rows = 4" [10 cm].

INSTRUCTIONS

Note: When joining colors, work to last 2 loops on hook of first color. Draw new color through last 2 loops and proceed. Carry color when not in use loosely across top of previous row and work sts around it to avoid stranding.

With A, ch 77.

1st row: (RS). 1 dc in 4th ch from hook (counts as 2 dc). 1 dc in each of next 3 ch. *(With B, 1 dc in next ch. With A, 1 dc in next ch) twice. With B, 1 dc in next ch. With A, 1 dc in each of next 5 ch. Rep from * to end of chain. Turn. 75 dc.

2nd row: With A, ch 3 (counts as dc). 1 dc in each of next 4 dc. *With B, 1 dc in each of next 2 dc. With A, 1 dc in next dc. With B, 1 dc in each of next 2 dc. With A, 1 dc in each of next 5 dc. Rep from * to end of row. Turn.

3rd row: With A, ch 3 (counts as dc). 1 dc in each of next 4 dc. *(With B, 1 dc in next dc. With A, 1 dc in next dc) twice. With B, 1 dc in next dc. With A, 1 dc in each of next 5 dc. Rep from * to end of row. Turn.

4th row: With A, ch 3 (counts as dc). (With B, 1 dc in next dc. With A, 1 dc in next dc) twice. *With B, 1 dc in each of next 5 dc. (With A, 1 dc in next dc. With B, 1 dc in next dc) twice. With A, 1 dc in next dc. Rep from * to end of row. Turn.

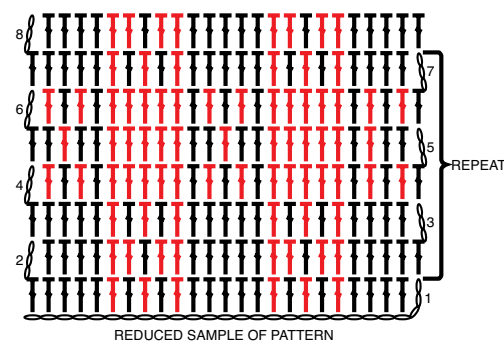
5th row: With A, ch 3 (counts as dc). 1 dc in next dc. With B, 1 dc in next dc. With A, 1 dc in each of next 2 dc. *With B, 1 dc in each of next 5 dc. With A, 1 dc in each of next 2 dc. With B, 1 dc in next dc. With A, 1 dc in each of next 2 dc. Rep from * to end of row. Turn.

6th row: As 4th row.


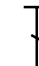


7th row: As 3rd row.

Rep 2nd to 7th rows for pat.

DIAGRAM



KEY

-  = chain (ch)
-  = double crochet (dc)
-  = Color A
-  = Color B

MATERIALS

Bernat® Softee® Baby Chunky™ (5 oz/140 g; 155 yds /142 m)

Contrast A Nighty Night (96017) **3 balls**

Contrast B Candy Apple Red (96008) **2 balls**

Size U.S. L/11 (8 mm) crochet hook **or size needed to obtain gauge.**

ABBREVIATIONS:

Approx = Approximately

Beg = Beginning

Ch = Chain(s)

Cont = Continue(ity)

Dc = Double crochet

Pat = Pattern

Rep = Repeat

RS = Right side

Rnd(s) = Round(s)

Sc = Single crochet

Sl st = Slip stitch

Cont in pat until work from beg measures approx 38" [96.5 cm], ending on a 3rd row of pat. Break B.

Edging: With A, cont as follows:

Next rnd: Ch 1. Work sc evenly around outer edge of Blanket, working 3 sc in each corner. Join with sl st to first sc.

Next rnd: Ch 1. Working from **left** to right, instead of from **right** to left as usual, work 1 reverse sc in each sc around. Join with sl st to first sc. Fasten off.

