



CROCHET | SKILL LEVEL: **INTERMEDIATE**

ABBREVIATIONS

Approx =

Approximately

Beg = Begin(ning)(s)

Ch = Chain(s)

Dc = Double crochet

Dcbp = Yoh and draw

up a loop around

post of next stitch

at back of work,

inserting hook from

right to left. (Yoh and

draw through 2 loops

on hook) twice.

Dcfp = Yoh and draw

up a loop around

post of next stitch

at front of work,

inserting hook from

right to left. (Yoh and

draw through 2 loops

on hook) twice.

Hdc = Half double

crochet

Pat = Pattern

Rep = Repeat

RS = Right side

Sl st = Slip stitch

Sp(s) = Space(s)

St(s) = Stitch(es)

Trfp = (Yoh) twice

and draw up a loop

around post of next

stitch at front of work,

inserting hook from

right to left. (Yoh and

draw through 2 loops

on hook) 3 times.

WS = Wrong side

Yoh = Yarn over hook

MEASUREMENTS

Approx 24" [61 cm] wide x 64" [162.5 cm] long.

GAUGE

12 hdc and 9 rows = 4" [10 cm] in Hdc Trinity St pat

INSTRUCTIONS

Note: Ch 2 at beg of row **does not** count as st.

SHAWL (make 2 pieces alike)

Ch 75. See diagram on page 3.

1st row: (WS) 1 dc in 4th ch from hook (counts as 2 dc). 1 dc in each ch to end of chain. Turn. 73 sts.

2nd row: Ch 2. 1 dcbp around first st. *1 dcbp around next st. 1 dcbp around next st. Rep from * to end of row. Turn.

3rd row: Ch 2. 1 dcbp around first st. *1 dcbp around next st. 1 dcbp around next st. Rep from * to end of row. Turn.

Rep 2nd and 3rd rows once more.

MATERIALS

Bernat® Velvet™ (10.5 oz/300 g; 315 yds/288 m)

Mushroom (32003)

4 balls

Size U.S. I/9 (5.5 mm) crochet hook **or size needed to obtain gauge.**
Yarn needle.

Beg working in pat as follows:

1st row: (RS). Ch 2. 1 hdc in each of first 3 sts. Skip next 3 sts. (1 trfp around next st) 3 times. *Working in front of sts just worked*, 1 trfp around each of 3 skipped sts. 1 hdc in next st. *Yoh and draw up a loop in same sp as last st worked. (Yoh and draw up a loop in next st/ch) twice. Yoh and draw through all 7 loops on hook – Hdc Trinity St made.* *Ch 1. Hdc Trinity St. Rep from * to last 9 sts. 1 hdc in same sp as last st worked. Skip next 3 sts. (1 trfp around next st) 3 times. *Working behind sts just worked*, 1 trfp around each of 3 skipped sts. 1 hdc in each of last 3 sts. Turn.

2nd row: Ch 2. 1 hdc in each of first 3 sts. 1 dcbp around each of next 6 sts. 1 hdc in next st. Hdc Trinity St. *Ch 1. Hdc Trinity St. Rep from * to last 9 sts. 1 hdc in same sp as st last worked. 1 dcbp around each of next 6 sts. 1 hdc in each of last 3 sts. Turn.

3rd row: Ch 2. 1 hdc in each of first 3 sts. 1 dcfp around each of next 6 sts. 1 hdc in next st. Hdc Trinity St. *Ch 1. Hdc Trinity St. Rep from * to last 9 sts. 1 hdc in same sp as last st worked. 1 dcfp around each of next 6 sts. 1 hdc in each of last 3 sts. Turn.

4th row: As 2nd row. Rep these 4 rows for pat until work from beg measures 32" [81.5 cm], ending on a WS row. Fasten off.

Patch Pockets (make 2)

Ch 33. See diagram on page 3.

1st row: (WS). 1 hdc in 3rd ch from hook. 1 hdc in each ch to end of chain. Turn. 31 sts.

2nd row: (RS). Ch 2. 1 hdc in first st. 1 dcfp around each of next 2 sts. 1 hdc in each of next 2 sts. Skip next 3 sts. (1 trfp around next st) 3 times. *Working in front of sts just worked*, 1 trfp around each of 3 skipped sts. 1 hdc in next st. Hdc Trinity St. *Ch 1. Hdc Trinity St. Rep from * to last 11 sts. 1 hdc in same sp as last st worked. Skip next 3 sts. (1 trfp around next st) 3 times. *Working behind sts just worked*, 1 trfp around each of 3 skipped sts. 1 hdc in each of next 2 sts. 1 dcfp around each of next 2 sts. 1 hdc in last st. Turn.

3rd row: Ch 2. 1 hdc in first st. 1 dcbp around each of next 2 sts. 1 hdc in each of next 2 sts. 1 dcbp around each of next 6 sts. 1 hdc in next st. Hdc Trinity St. *Ch 1. Hdc Trinity St. Rep from * to last 11 sts.

1 hdc in same sp as last st worked. 1 dcbp around each of next 6 sts. 1 hdc in each of next 2 sts. 1 dcbp around each of next 2 sts. 1 hdc in last st. Turn.

4th row: Ch 2. 1 hdc in first st. 1 dcfp around each of next 2 sts. 1 hdc in each of next 2 sts. 1 dcfp around each of next 6 sts. 1 hdc in next st. Hdc Trinity St. *Ch 1. Hdc Trinity St. Rep from * to last 11 sts. 1 hdc in same sp as st last worked. 1 dcfp around each of next 6 sts. 1 hdc in each of next 2 sts. 1 dcfp around each of next 2 sts. 1 hdc in last st. Turn.

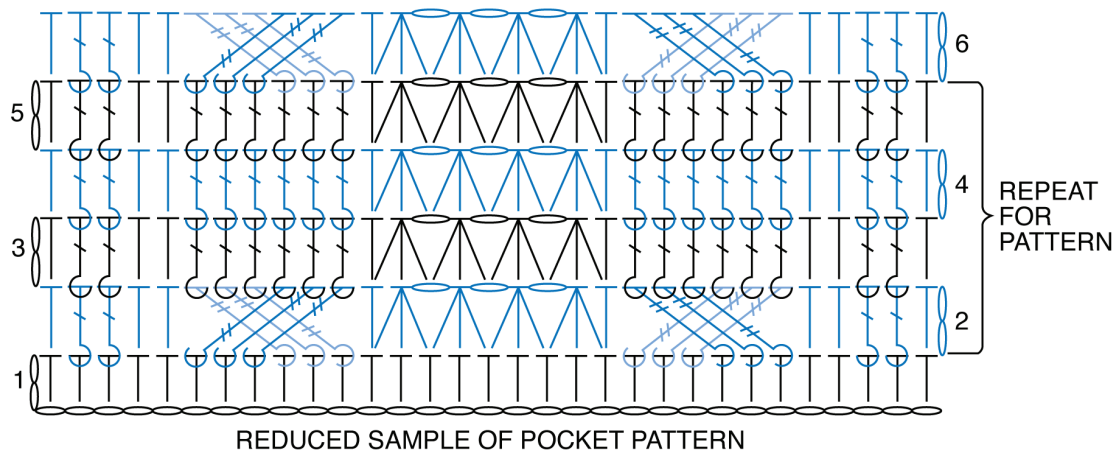
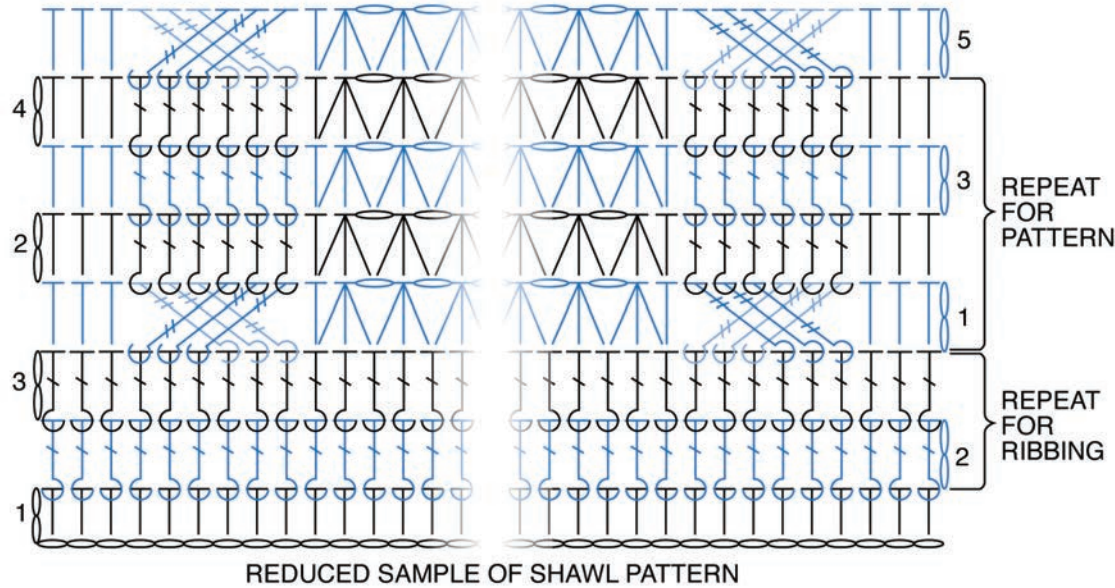
5th row: As 3rd row. Rep 2nd to 5th rows until work from beg measures approx 9" [23 cm], ending on an 3rd row.








Next row: Ch 2. *1 dcfp around next st. 1 dcbp around next st. Rep from * to last st. 1 dcfp around last st. Turn.

Next row: Ch 2. *1 dcbp around next st. 1 dcfp around next st. Rep from * to last st. 1 dcbp around last st. Fasten off.

Join Shawl Pieces: With RS facing each other, align final rows of Shawl Pieces (center back). With WS facing, join yarn with sl st and work 1 row of sc through both thicknesses to join. Fasten off. Sew Pockets to each end as shown in photo, aligning base of Pocket with last row of Shawl ribbing.





- STITCH KEY**
-  = chain (ch)
 -  = half double crochet (hdc)
 -  = double crochet (dc)
 -  = front post double crochet (dcfp)
 -  = back post double crochet (dcbp)
 -  = front post treble crochet (trfp)
 -  = Hdc Trinity St