



MATERIALS

Bernat® Satin™ (3.5 oz/100 g; 200 yds/182 m)
Crimson (04705) **3 balls**

Size U.S. I/9 (5.5 mm) crochet hook **or size needed to obtain gauge.**

ABBREVIATIONS:

Approx = Approximate(ly)
Beg = Begin(ning)
Ch = Chain(s)
Cont = Continue(ity)
Dc = Double crochet
Pat = Pattern
Rem = Remain(ing)

Rep = Repeat
RS = Right side
Sc = Single crochet
Sc2tog = Draw up a loop in each of next 2 stitches. Yoh and draw through all loops on hook

Sl st = Slip stitch
Sp(s) = Space(s)
St(s) = Stitch(es)
Tog = Together
WS = Wrong side
Yoh = Yarn over hook

 CROCHET | SKILL LEVEL: EASY

MEASUREMENTS

Approx 7 x 65" [18 x 165 cm].

GAUGE

13 sc and 15 rows = 4" [10 cm].

INSTRUCTIONS

Note: Ch 3 at beg of row counts as dc throughout. Ch 26.

Foundation row: (RS). 1 sc in 2nd ch from hook and each ch to end of chain. Turn. 25 sc.

Next row: Ch 3. 1 dc in each sc to end of row. Turn.

Proceed in Heart Pat as follows:

1st row: (RS). Ch 1. 1 sc in each of first 12 dc. Ch 1. Miss next dc. 1 sc in each of last 12 dc. Turn.

2nd row: Ch 3. 1 dc in each of next 11 sc. Ch 1. Miss next ch-1 sp. 1 dc in each of last 12 sc. Turn.

3rd row: Ch 1. 1 sc in each of next 10 dc. Ch 1. Miss next dc. 1 sc in next dc. [(Yoh) twice and draw up a loop in front loop of ch-1 sp 2 rows below. Yoh and draw through 2 loops on hook] twice] 5 times. Yoh and draw through all 6 loops on hook – bobble made. 1 sc in next dc. Ch 1. Miss next dc.

1 sc in each of last 10 dc. Turn.

4th row: Ch 3. 1 dc in each of next 9 sc. Ch 1. Miss next ch-1 sp. 1 dc in each of next 3 sts. Ch 1. Miss next ch-1 sp. 1 dc in each of last 10 sc. Turn.

5th row: Ch 1. 1 sc in each of next 8 dc. Ch 1. Miss next dc. 1 sc in next dc. Bobble in front loop of next ch-1 sp of 3rd row. 1 sc in each of next 3 dc. Bobble in front loop of next ch-1 sp of 3rd row. 1 sc in next dc. Ch 1. Miss next dc. 1 sc in each of last 8 dc. Turn.

6th row: Ch 3. 1 dc in each of next 7 sc. Ch 1. Miss next ch-1 sp. 1 dc in each of next 7 sts. Ch 1. Miss next ch-1 sp. 1 dc in each of last 8 sc. Turn.

7th row: Ch 1. 1 sc in each of next 6 dc. Ch 1. Miss next dc. 1 sc in next dc. Bobble in front loop of next ch-1 sp of 5th row. 1 sc in each of next 7 dc. Bobble in front loop of next ch-1 sp of 5th row. 1 sc in next dc. Ch 1. Miss next dc. 1 sc in each of last 6 dc. Turn.

8th row: Ch 3. 1 dc in each of next 5 sc. Ch 1. Miss next ch-1 sp. 1 dc in each of next 11 sts. Ch 1. Miss next ch-1 sp. 1 dc in each of last 6 sc. Turn.

9th row: Ch 1. 1 sc in each of next 4 dc. Ch 1. Miss next dc. 1 sc in next dc. Bobble in front loop of next ch-1 sp of 7th row. 1 sc in each of next 11 dc. Bobble in front loop of next ch-1 sp of 7th row. 1 sc in next dc. Ch 1. Miss next dc. 1 sc in each of last 4 dc. Turn.

10th row: Ch 3. 1 dc in each of next 3 sc. Ch 1. Miss next ch-1 sp. 1 dc in each of next 15 sts. Ch 1. Miss next ch-1 sp. 1 dc in each of last 4 sc. Turn.

11th row: Ch 1. 1 sc in each of next 2 dc. Ch 1. Miss next dc. 1 sc in next dc. Bobble in front loop of next ch-1 sp of 9th row. 1 sc in each of next 7 dc. Ch 1. Miss next dc. 1 sc in each of next 7 dc. Bobble in front loop of next ch-1 sp of 9th row. 1 sc in next dc. Ch 1. Miss next dc. 1 sc in each of last 2 dc. Turn.

12th row: Ch 3. 1 dc in next sc. (Ch 1. Miss next ch-1 sp. 1 dc in each of next 9 sts) twice. Ch 1. Miss next ch-1 sp. 1 dc in each of last 2 sc. Turn.

13th row: Ch 1. 1 sc in each of next 2 dc. (Bobble in front loop of next ch-1 sp of 11th row. Ch 1. Miss next

dc. 1 sc in each of next 7 dc. Ch 1. Miss next dc) twice. Bobble in front loop of next ch-1 sp of 11th row. 1 sc in each of next 2 dc. Turn.

14th row: Ch 3. 1 dc in each of next 2 sts. (Ch 1. Miss next ch-1 sp. 1 dc in each of next 7 dc. Ch 1. Miss next ch-1 sp. 1 dc in next sc) twice. 1 dc in each of last 2 sc. Turn.

15th row: Ch 1. 1 sc in each of next 3 dc. (Bobble in front loop of next ch-1 sp of 13th row. Ch 1. Miss next dc. 1 sc in each of next 5 dc. Ch 1. Miss next dc. Bobble in front loop of next ch-1 sp of 13th row. 1 sc in next dc) twice. 1 sc in each of last 2 dc. Turn.

16th row: Ch 3. (1 dc in each of next 3 sts. Ch 1. Miss next ch-1 sp. 1 dc in each of next 5 dc. Ch 1. Miss next ch-1 sp) twice. 1 dc in each of last 4 sts. Turn.

17th row: Ch 1. 1 sc in each of next 4 dc. *Bobble in front loop of next ch-1 sp of 15th row. (1 sc in next dc. Ch 1. Miss next dc) twice. 1 sc in next dc. Bobble in front loop of next ch-1 sp of 15th row. 1 sc in each of next 3 dc. Rep from * once

more. 1 sc in last dc. Turn.

18th row: Ch 3. 1 dc in each of next 5 sts. *Ch 1. Miss next ch-1 sp. 1 dc in next sc. Ch 1. Miss next ch-1 sp.* 1 dc in each of next 7 sts. Rep from * to * once more. 1 dc in each of last 6 sts. Turn.

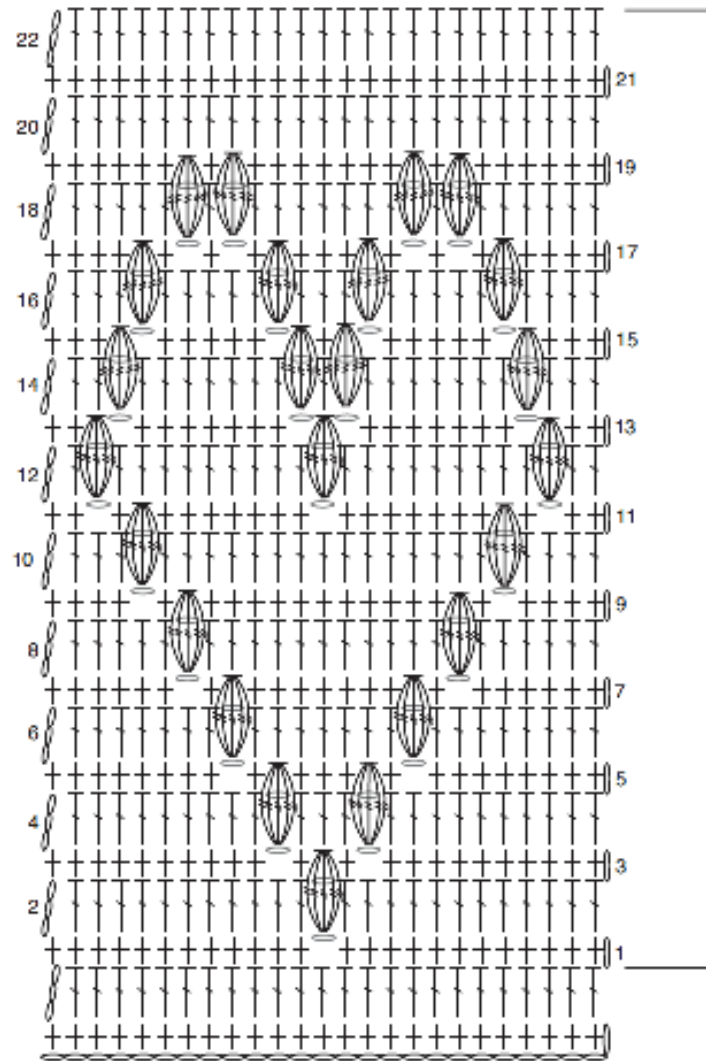
19th row: Ch 1. 1 sc in each of next 6 dc. *Bobble in front loop of next ch-1 sp of 17th row. 1 sc in next dc. Bobble in front loop of next ch-1 sp of 17th row.* 1 sc in each of next 7 dc. Rep from * to * once more. 1 sc in each of last 6 dc. Turn.

20th row: Ch 3. 1 dc in each st to end of row. Turn.



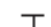

21st row: Ch 1. 1 sc in each dc to end of row. Turn.

22nd row: As 20th row. Rep 1st to 22nd rows for Heart Pat until Scarf measures approx 65" [165 cm], ending with 21st row. Fasten off.

Chart



Key

-  = chain (ch)
-  = single crochet (sc)
-  = double crochet (dc)
-  = bobble

REPEAT