



CROCHET | SKILL LEVEL: **EASY**

## ABBREVIATIONS

**Approx** = Approximate(ly)

**Ch** = Chain(s)

**Dc** = Double crochet

**Hdc** = Half double crochet

**Popcorn** = Work 5 dc in indicated space. Drop loop from hook.

Insert hook into first of 5 dc and pull dropped loop through. Ch 1 tightly to complete popcorn.

**Rep** = Repeat

**RS** = Right side

**Sc** = Single crochet

**Sl st** = Slip stitch

**St(s)** = Stitch(es)

**Tr** = Treble crochet

**WS** = Wrong side

**Yoh** = Yarn over hook

## MEASUREMENTS

Approx 13" x 15" [33 x 38 cm], excluding handles.

## GAUGE

14 sc and 15 rows = 4" [10 cm].

## INSTRUCTIONS

### Notes:

- Work 2 Motifs with contrast edging.
- Side Section is worked around 3 sides of Motif.
- Top Border and Straps are worked after Motifs and Side Section are joined.

## MOTIF (make 2)

See diagram on page 3.

With MC, ch 4. Join with sl st to first ch to form a ring.

**1st rnd:** Ch 3 (counts as dc here and throughout). 3 dc in ring. (Ch 2. 4 dc in ring) 3 times. Join with hdc to top of ch 3 (creates last ch-2 sp).

**2nd rnd:** Ch 3. (3 dc. Ch 2. 4 dc) all in ch-2 sp just created. \*Ch 1. (4 dc. Ch 1. 4 dc) all in next ch-2 sp. Rep from \* twice more. Ch 1. Join with sl st to top of ch 3.

## MATERIALS

**Bernat® Maker™** (8.8 oz/250 g; 317 yds/290 m)

**Main Color (MC)** Cream (06003) **1 ball or 310 yds/282 m**

**Contrast A** Navy (06017) **1 ball or 260 yds/237 m**

Size U.S. J/10 (6 mm) Susan Bates® Silvalume® crochet hook **or size needed to obtain gauge.** Susan Bates® yarn needle.

**3rd rnd:** Ch 3. 1 dc in each of next 3 dc. \*(1 dc. Popcorn. 1 dc) all in next corner ch-1 sp. 1 dc in each of next 4 dc. 1 dc in next ch-1 sp. 1 dc in each of next 4 dc. Rep from \* twice more. (1 dc. Popcorn. 1 dc) all in next corner ch-1 sp. 1 dc in each of next 4 dc. 1 dc in last ch-1 sp. Join with sl st to top of ch 3.

**4th rnd:** Ch 3. 1 dc in each of next 4 dc. \*(1 dc. 1 tr. Ch 1. 1 tr. 1 dc) all in top of next popcorn. 1 dc in each of next 11 dc. Rep from \* twice more. (1 dc. 1 tr. Ch 1. 1 tr. 1 dc) all in top of last popcorn. 1 dc in each of last 5 dc. Join with sl st to top of ch 3.

**5th rnd:** Ch 3. 1 dc in each dc to next corner ch-1 sp. \*(2 dc. Popcorn. 2 dc) all in next corner ch-1 sp. 1 dc in each dc to next corner ch-1 sp. Rep from \* twice more. (2 dc. Popcorn. 2 dc) all in last corner ch-1 sp. 1 dc in each dc to end of rnd. Join with sl st to top of ch 3.

**6th rnd:** Ch 3. 1 dc in each dc to next popcorn. \*(1 dc. 1 tr. Ch 1. 1 tr. 1 dc) all in top of next popcorn. 1 dc in each dc to next popcorn. Rep from \* twice more. (1 dc. 1 tr. Ch 1. 1 tr. 1 dc) all in top of last popcorn. 1 dc in each dc to end of rnd. Join with sl st to top of ch 3.

**7th and 8th rnds:** As 5th and 6th rnds.

**9th rnd:** As 5th rnd. Fasten off (note 'Fasten off' point will be bottom edge of Motif).

**Motif Edging:** With RS facing, join A with sl to **front loop only** of right corner popcorn in last rnd. Working in **front loops only**, work 1 sc in each st down side to next corner popcorn. 3 sc in **front loop only** of corner popcorn. Working in **front loops only**, work 1 sc in each st across bottom of Motif (where fasten off occurred) to next corner popcorn. 3 sc in **front loop only** of corner popcorn. Working in **front loops only**, work 1 sc up side of Motif to next corner popcorn. Working in **front loop only**, work 1 sc in popcorn. Fasten off.

**Side Section: 1st row:** With RS of 1 Motif facing, locate **rem back loops** from Motif Edging rnd. Join MC with sl st in first rem loop. 1 sc in same sp. Work 1 sc in rem back loop of each st along the same row as Motif Edging. (This will create a ridge in A). Turn.

**2nd to 8th rows:** Ch 1. 1 sc in each sc to end of row. Turn.

**Do not** fasten off – proceed as follows:

**Join Side Section to 2nd Motif:**

Locate **rem back loops** from 2nd Motif Edging rnd. With RS of pieces facing each other, line up 8th row of Side Section with rem back loops of Motif Edging rnd. *Working through both thicknesses*, join last row of Side Section with rem back loops of Motif Edging rnd with 1 row of sl st. Fasten off. (This will create a ridge in A).

**Top Border and Straps**

**Note:** When working 1st rnd, take care to work into A 'ridges' to align them towards Side Sections (see photo).

**1st rnd:** (RS). Join A with sl st on upper edge in top of A 'ridge' on left corner of Motif. Ch 1. Work 9 sc across top of Side Section. Work 1 sc in each st across top of Motif (37 sc). Work 9 sc across top of 2nd Side Section. Work 1 sc in each st across top of 2nd Motif (37 sc). 92 sc. Join with sl st to first sc.

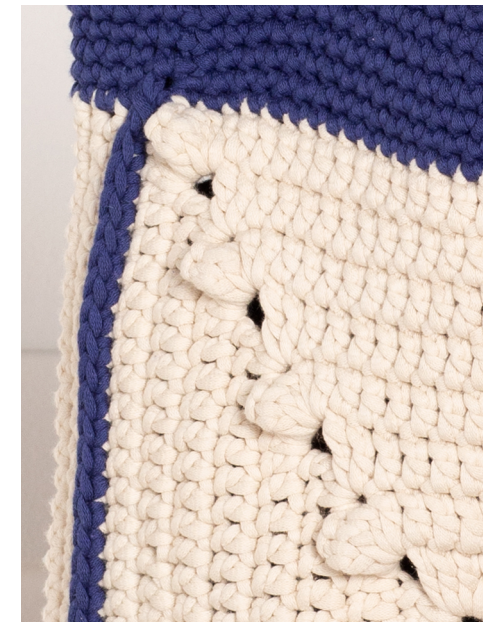
**2nd to 7th rnds:** Ch 1. 1 sc in each sc around. Join with sl st to first sc.

**8th rnd (Place Straps):** Ch 1. 1 sc in each of first 15 sc. Ch 51. Skip next 25 sc. 1 sc in each of next 21 sc. Ch 51. Skip next 25 sc. 1 sc in each of last 6 sc. Join with sl st to first sc.

**9th rnd:** Ch 1. 1 sc in each sc and ch to end of rnd. Join with sl st to first sc. 144 sc.

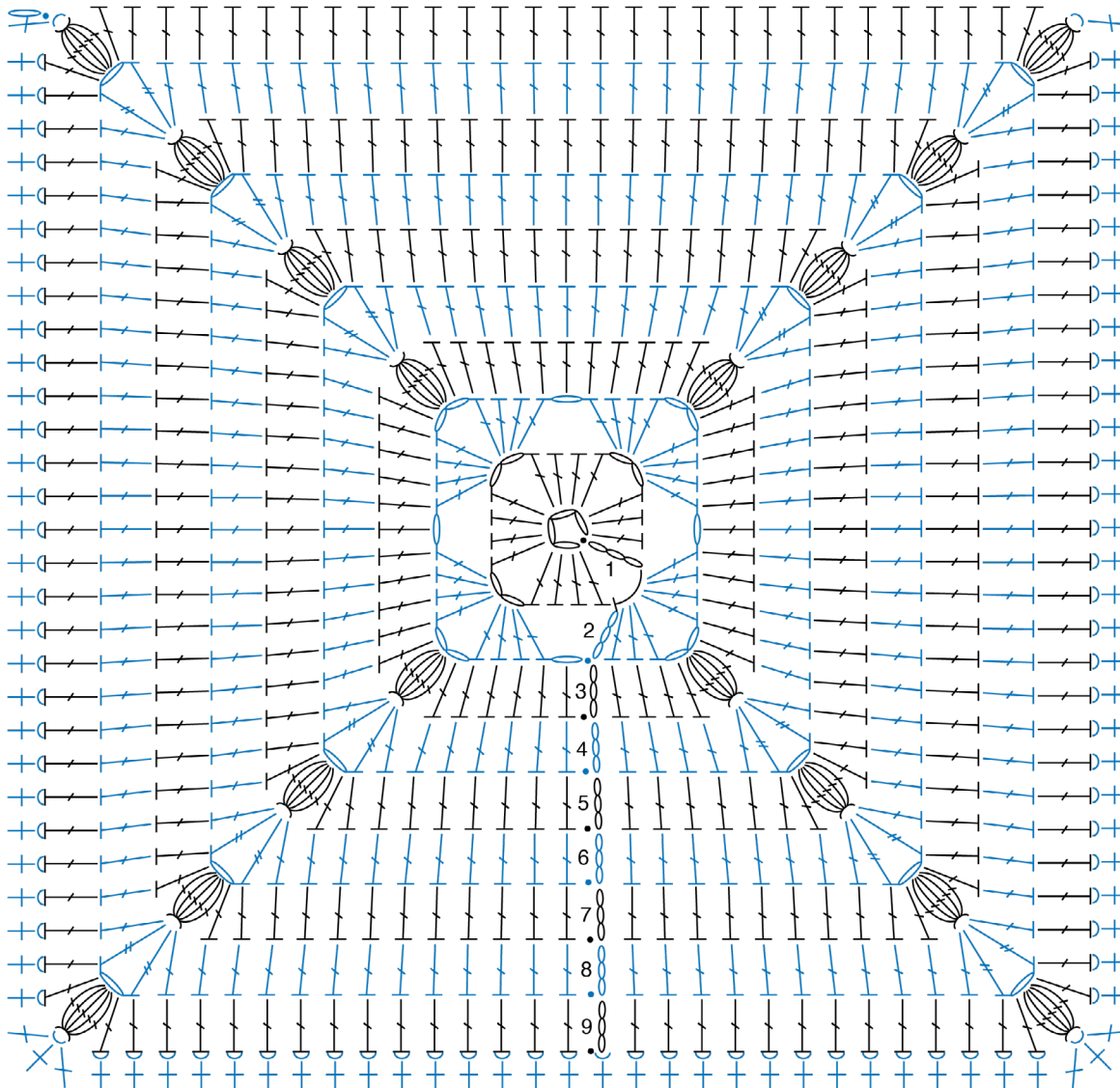
**10th to 12th rnds:** Ch 1. 1 sc in each sc around. Join with sl st to first sc.

Fasten off.



MOTIF EDGING

TOP OF MOTIF



STITCH KEY

- = chain (ch)
- = slip stitch (sl st)
- ⊥ = single crochet (sc)
- ┆ = half double crochet (hdc)
- ┆ = double crochet (dc)
- ┆ = treble crochet (tr)
- ⌋ = worked in back loop only