



MATERIALS

Anchor® Embroidery Floss on Spools

Carmine Red (0047)	1 spool
Carnation Med (0027)	1 spool
Antique Rose Lt (0074)	1 spool
Black (0403)	1 spool
Grey Lt (0397)	1 spool

3 x 6" [15 cm] Anchor® Sparkles Embroidery Hoops. Embroidery or Crewel needle, size 7 or 8. Cotton or Linen fabric (each design will require 8" [20.5 cm] square piece of fabric). Fabric marker for transferring design.



CRAFT | SKILL LEVEL: **EASY**

MEASUREMENT

6" [15 cm] diameter.

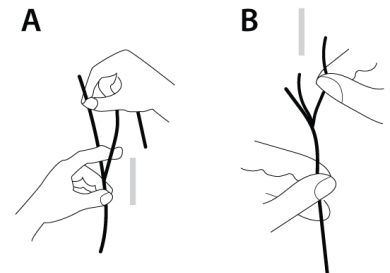
INSTRUCTIONS

Note: All elements use 3 strands of Anchor Floss unless otherwise noted.

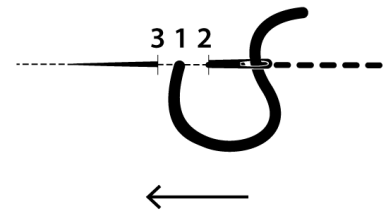
1. Transfer desired design onto fabric. (See *Templates on pages 2-4*)
2. Using back stitch, embroider the designs.

TIP: To separate the floss into strands, cut an 18" [45.5 cm] length. Hold one end and run the finger of your opposite hand between the strands allowing them to untwist. Thread the needle.

SEPARATING THE FLOSS STRANDS



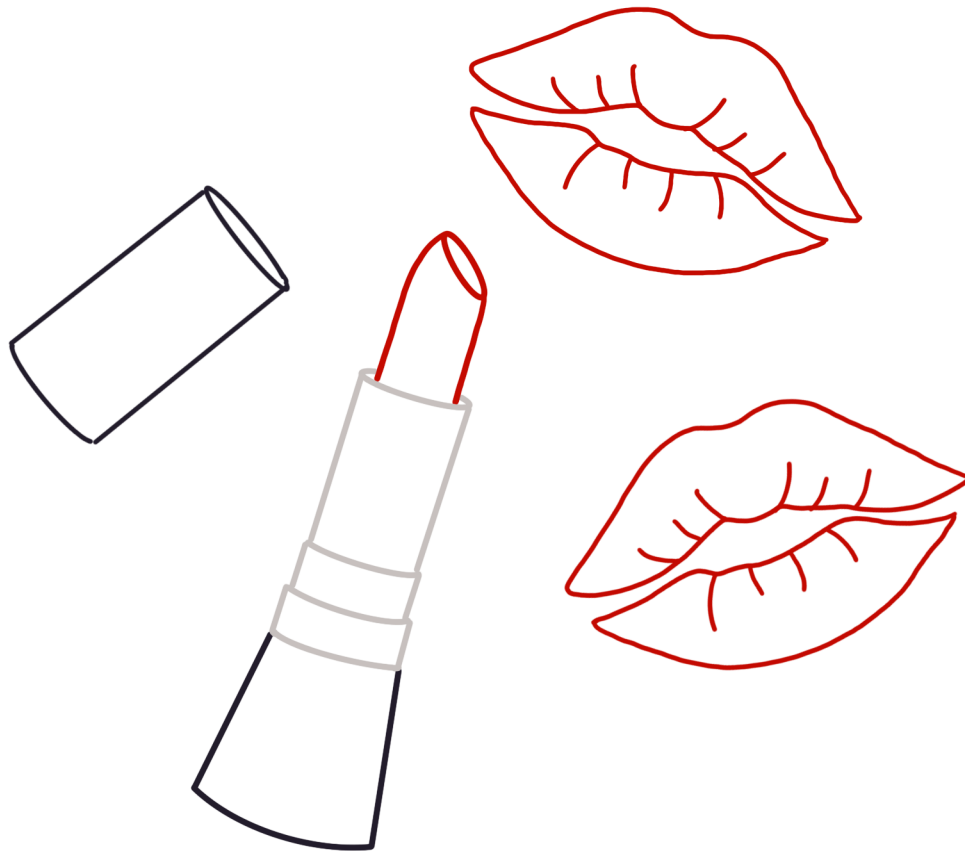
BACK STITCH



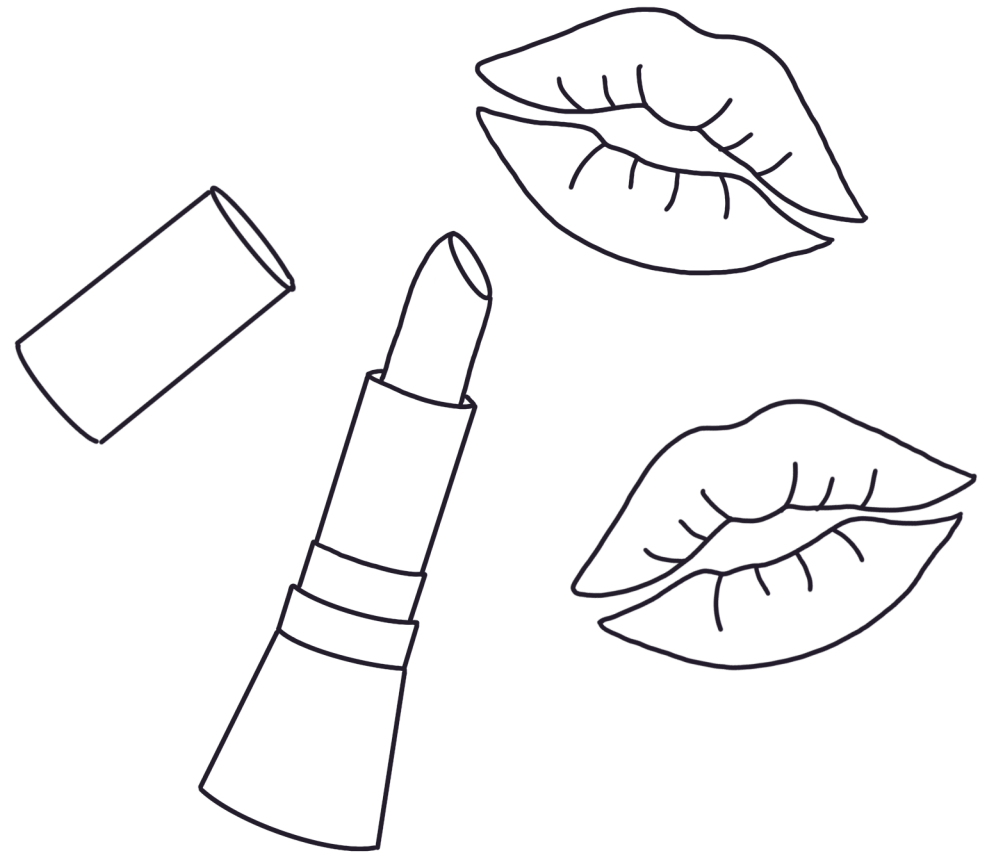
Back stitch - 3 strands

	0047
	0027
	0074
	0403
	0397

COLOR GUIDE



TEMPLATE



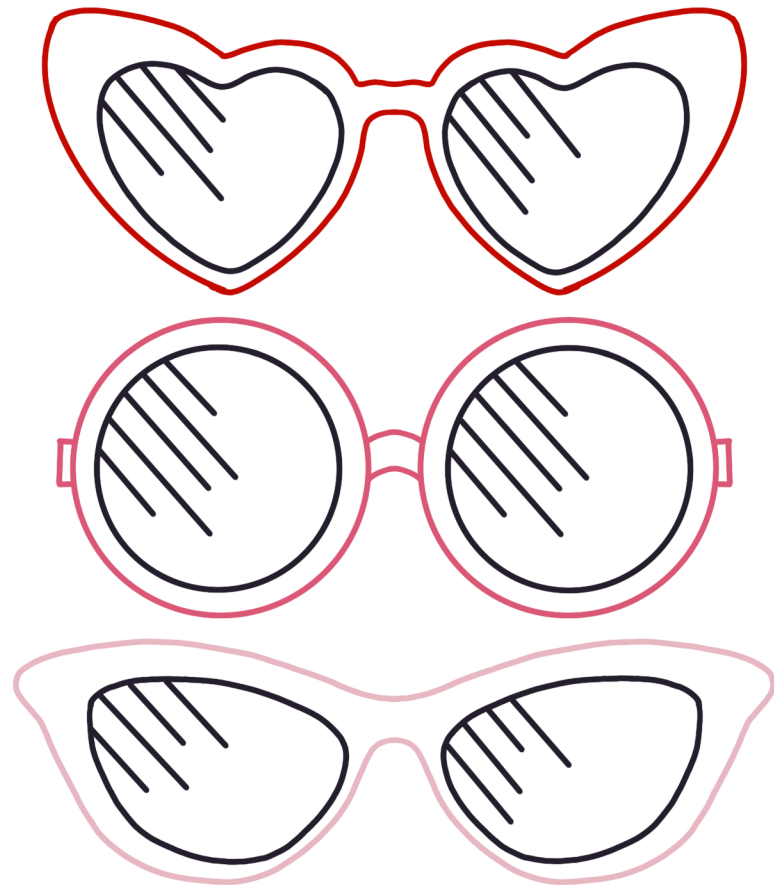
COLOR GUIDE



TEMPLATE



COLOR GUIDE



TEMPLATE

