



⊗ CROSS STITCH
SKILL LEVEL: **EASY**

MEASUREMENT

Stitch count: 64W x 42H

On 14 count aida design area will be approximately 4½" x 3" (11.5cm x 7.5cm).

INSTRUCTIONS

Note: On 14 count Aida use 2 strands. Split the length of thread before beginning each color.

1. Download Stitch Chart.
2. Determine the center of your fabric. This is where you will begin stitching. Place the fabric in an embroidery hoop.
3. One square on the chart represents one stitch of the design.
4. Thread the needle with 2 strands of embroidery floss. Begin at the center square of the chart.
5. Work **right** to left or **left** to right always crossing the stitch in the same direction. Work stitches of the same color close together and do not move to areas that are more than an inch away.

Featuring Anchor® Embroidery Floss Spools

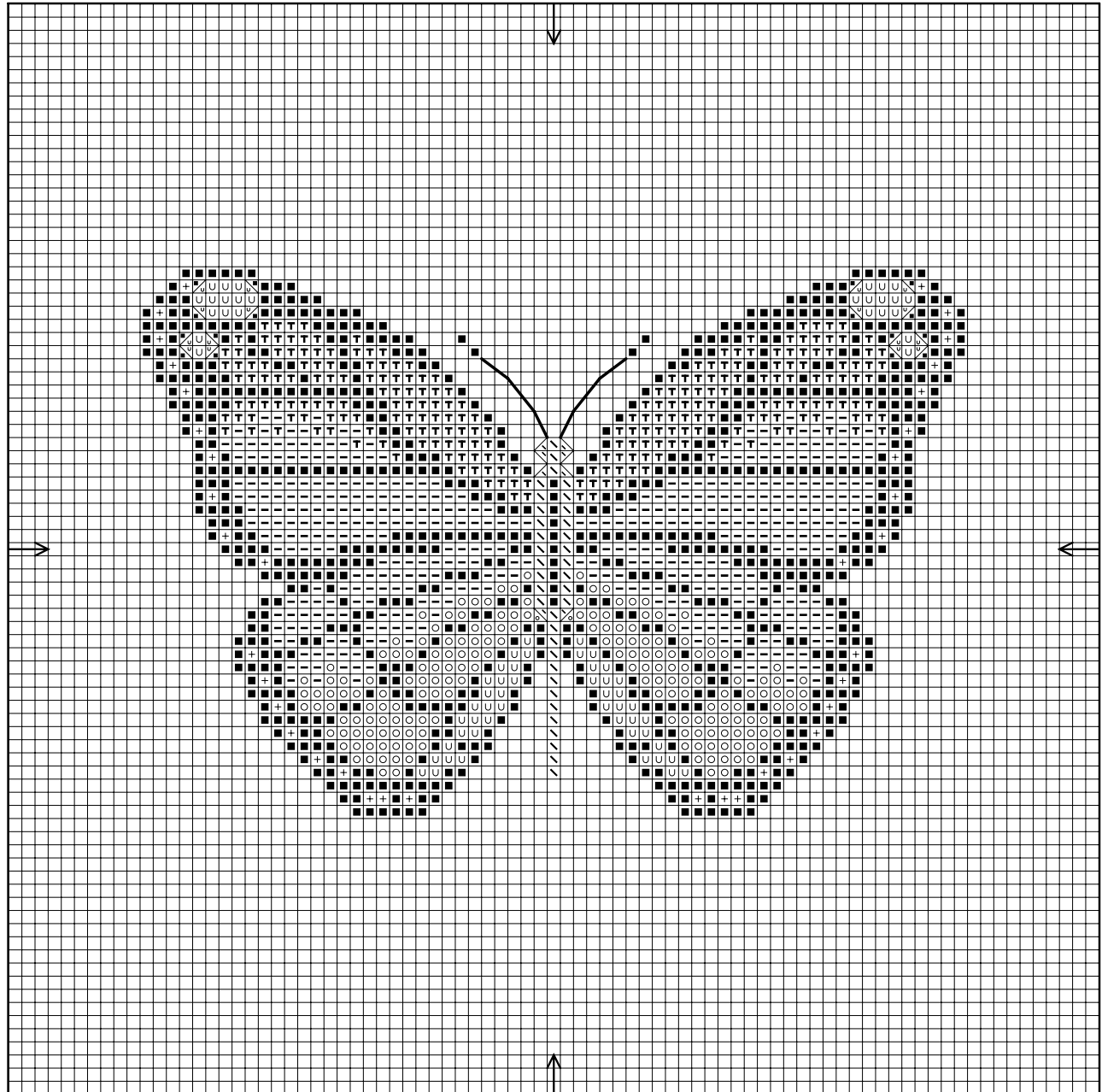
No need to wait for the Monarchs to return- stitch a pretty Monarch Butterfly to enjoy year-round. Anchor® Embroidery Floss on spools makes floss easy to use- no tangles or messy skeins.

MATERIALS

Anchor® Embroidery Floss Spools: 1 of each color

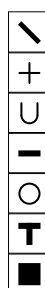


Anchor® Embroidery Hoop. 14 ct Aida. Tapestry Needle No. 24



KEY

Symbol Backstitch Color No.



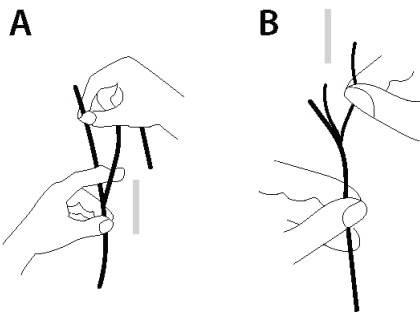
0351
0001
0297
0330
0328
0334
0403



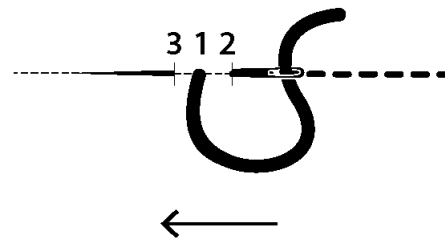
STITCHES

TIP: To separate the floss into strands, cut an 18" length. Hold one end and run the finger of your opposite hand between the strands allowing them to untwist. Thread the needle.

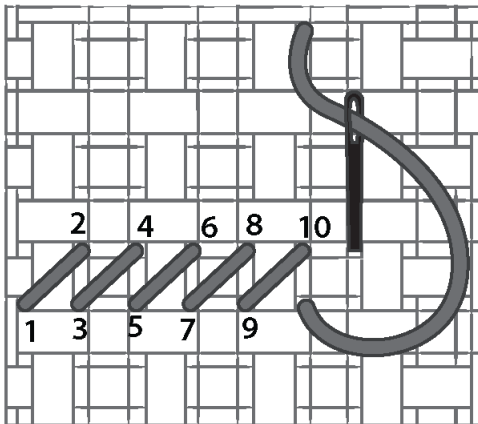
SEPARATING THE FLOSS STRANDS



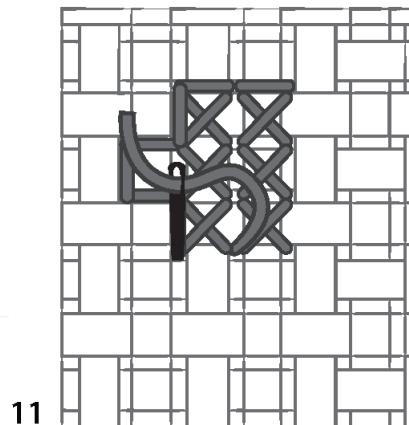
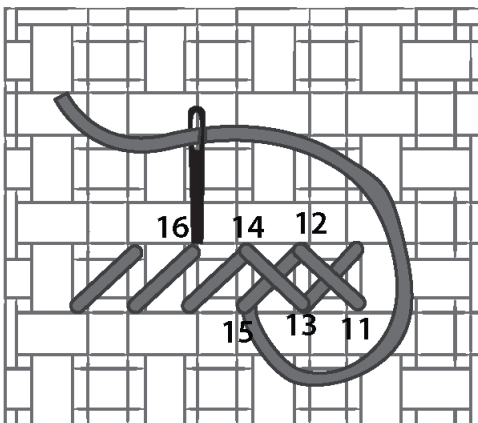
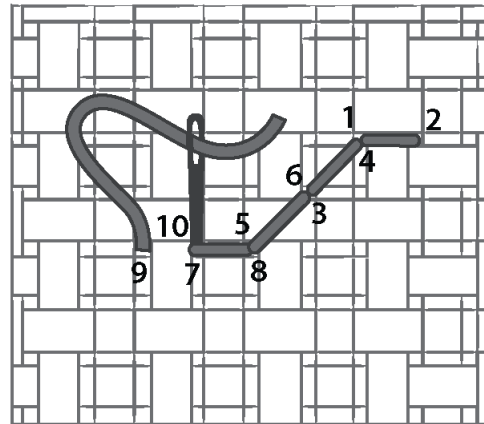
BACK STITCH



CROSS STITCH DIAGRAM



CROSS STITCH BACKSTITCH



11