



 CROSS STITCH
SKILL LEVEL: **EASY**

MEASUREMENT

Stitch count: 71 W x 59 H

On 14 count aida design area will be approximately 5" x 4¼" (12.5cm x 11m).

INSTRUCTIONS

Note: On 14 count Aida use 2 strands. Split the length of thread before beginning each color.

1. Download Stitch Chart.
2. Determine the center of your fabric. This is where you will begin stitching. Place the fabric in an embroidery hoop.
3. One square on the chart represents one stitch of the design.
4. Thread the needle with 2 strands of embroidery floss. Begin at the center square of the chart.
5. Work **right** to left or **left** to right always crossing the stitch in the same direction. Work stitches of the same color close together and do not move to areas that are more than an inch away.

Featuring Anchor® Embroidery Floss Spools

Making a gingerbread house is a favorite Christmas activity. Here's one that isn't messy and has no calories! Stitch this cute Gingerbread House to add to your Christmas decorations. Anchor® Embroidery Floss on spools makes it fast and easy- plus no messy skeins.

MATERIALS

Anchor® Embroidery Floss Spools: 1 of each color



0906



0907



0046



0169

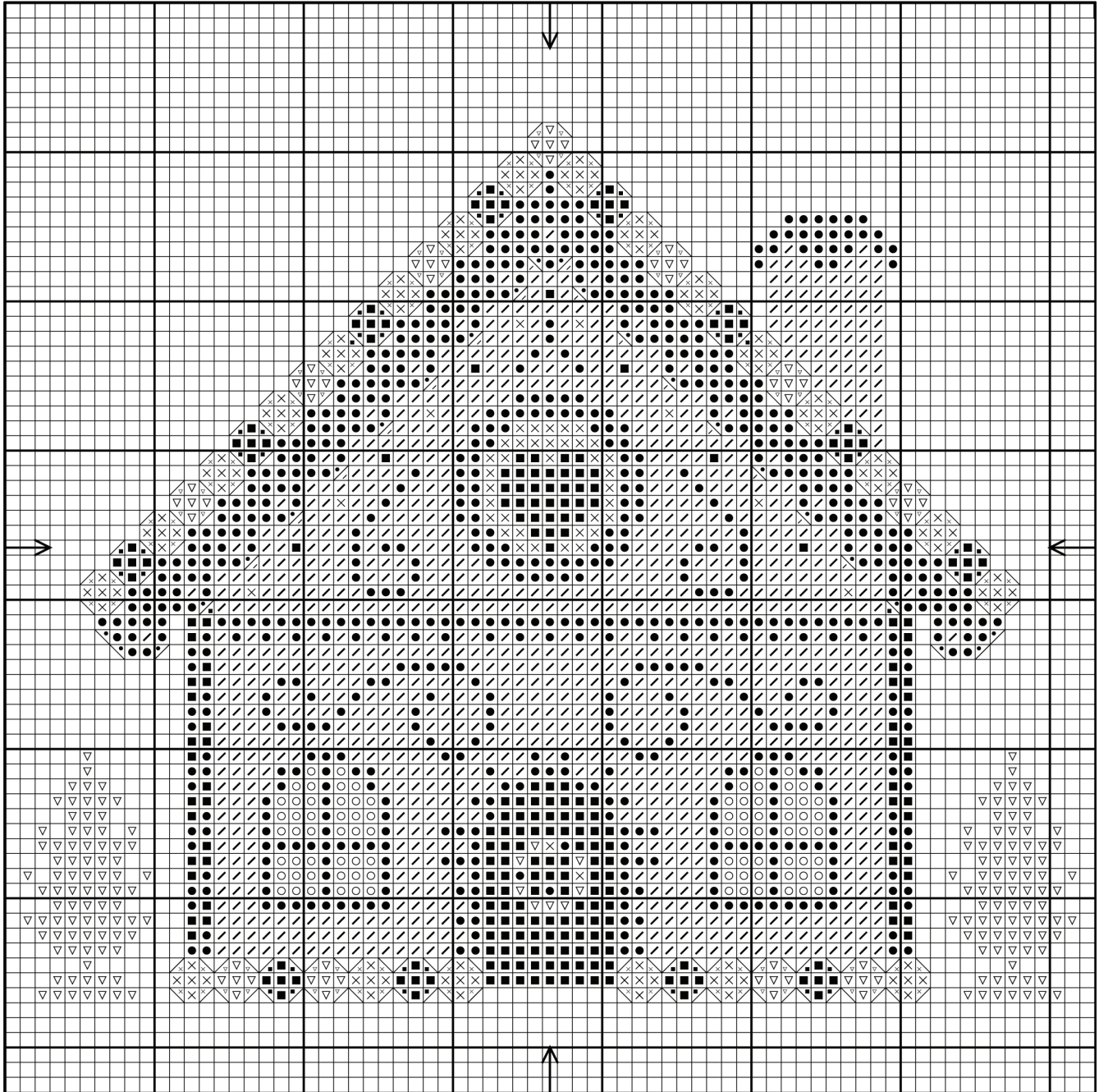


0257



0001

Anchor® Embroidery Hoop. 14 ct Aida, cream. Tapestry Needle No. 24.



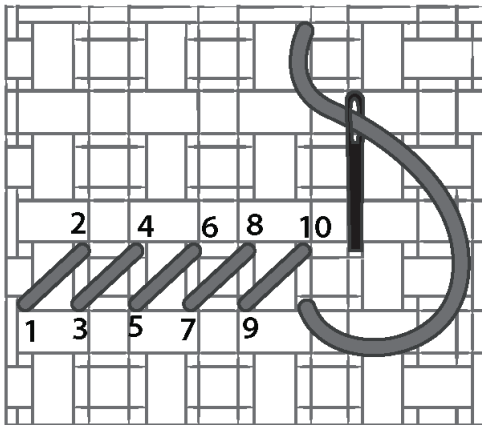
KEY

Symbol	Color
○	0906
▨	0907
■	0046
×	0169
▽	0257
●	0001

STITCHES

TIP: To separate the floss into strands, cut an 18" length. Hold one end and run the finger of your opposite hand between the strands allowing them to untwist. Thread the needle.

CROSS STITCH DIAGRAM



CROSS STITCH BACKSTITCH

