



⊗ CROSS STITCH
SKILL LEVEL: **EASY**

MEASUREMENT

Stitch count: 34 W x 42 H

On 14 count aida design area will be approximately 2½" x 3" (6cm x 7.5m).

INSTRUCTIONS

Note: On 14 count Aida use 2 strands. Split the length of thread before beginning each color.

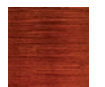
1. Download Stitch Chart.
2. Determine the center of your fabric. This is where you will begin stitching. Place the fabric in an embroidery hoop.
3. One square on the chart represents one stitch of the design.
4. Thread the needle with 2 strands of embroidery floss. Begin at the center square of the chart.
5. Work **right** to left or **left** to right always crossing the stitch in the same direction. Work stitches of the same color close together and do not move to areas that are more than an inch away.

Featuring Anchor® Embroidery Floss Spools

Cross stitch this Christmas tree in shades of green. Make an ornament or a package decoration- it's just the right size. Anchor® Floss on spools makes projects like this fun and easy to complete.

MATERIALS

Anchor® Embroidery Floss Spools: 1 of each color



0351



0923



0226



1090

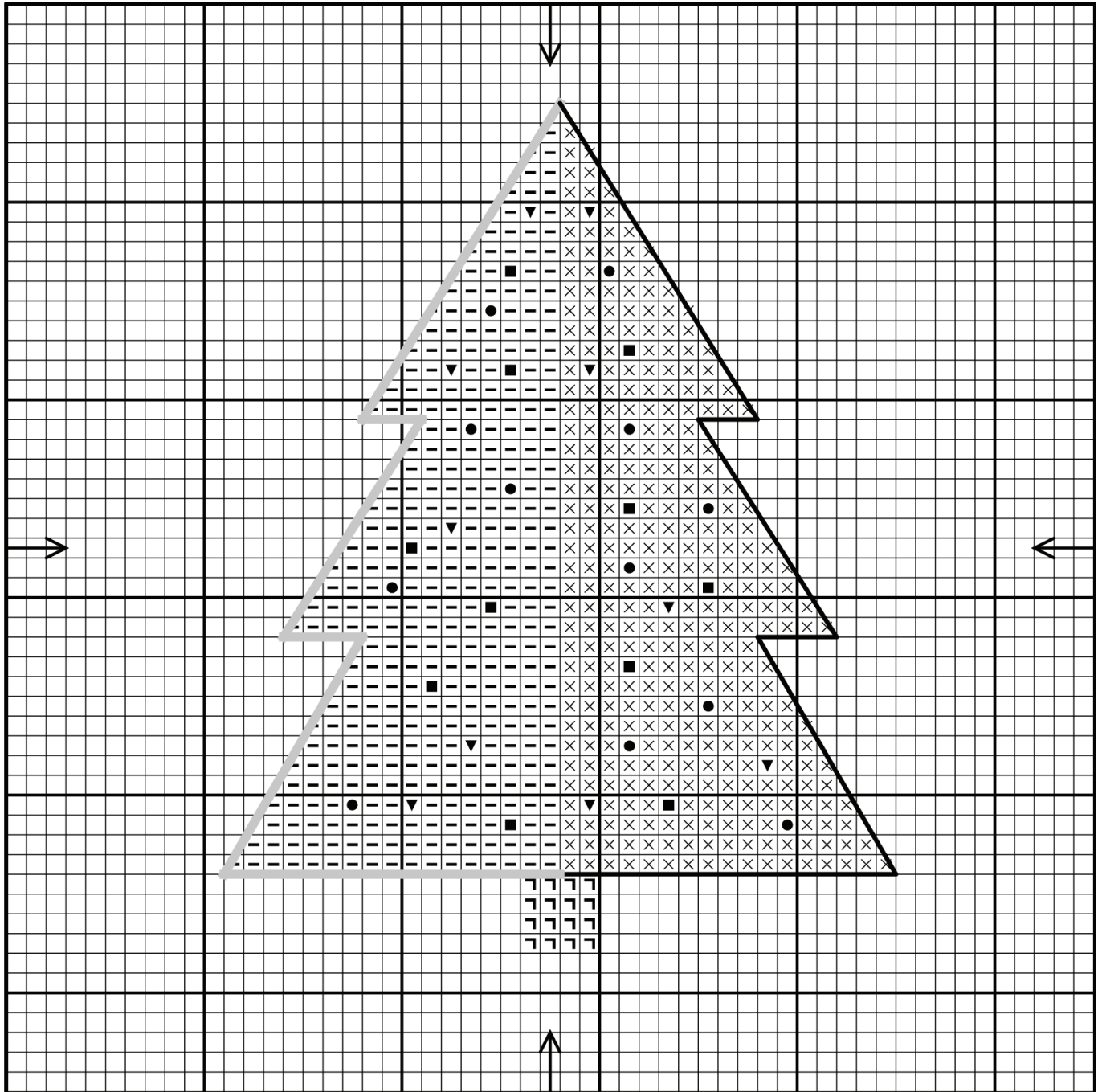


0046



0291

Anchor® Embroidery Hoop. 14 ct Aida, white. Tapestry Needle No. 24.



KEY

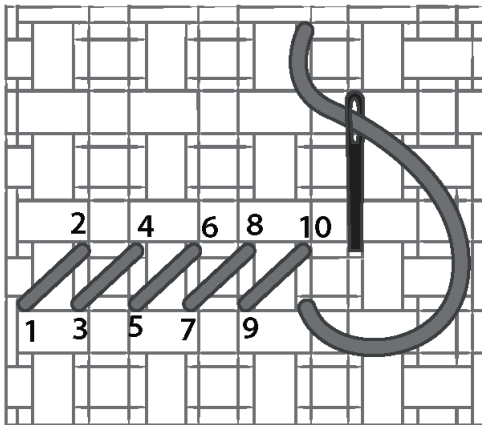
| Symbol | Backstitch | Color |
|--------|------------|-------|
| | | 0351 |
| | | 0923 |
| | | 0226 |
| | | 1090 |
| | | 0046 |
| | | 0291 |



STITCHES

TIP: To separate the floss into strands, cut an 18" length. Hold one end and run the finger of your opposite hand between the strands allowing them to untwist. Thread the needle.

CROSS STITCH DIAGRAM



CROSS STITCH BACKSTITCH

