



 CROSS STITCH
SKILL LEVEL: **EASY**

MEASUREMENT

Stitch count: 73 W x 86 H

On 14 count aida design area will be approximately 5¼" x 6" (13cm x 15.5cm).

INSTRUCTIONS

Note: On 14 count Aida use 2 strands. Split the length of thread before beginning each color.

1. Download Stitch Chart.
2. Determine the center of your fabric. This is where you will begin stitching. Place the fabric in an embroidery hoop.
3. One square on the chart represents one stitch of the design.
4. Thread the needle with 2 strands of embroidery floss. Begin at the center square of the chart.
5. Work **right** to left or **left** to right always crossing the stitch in the same direction. Work stitches of the same color close together and do not move to areas that are more than an inch away.

Featuring Anchor® Embroidery Floss Spools

Create a Christmas Holiday Sampler inspired by Scandinavian design. The teal and red palette give it a modern vibe. Stitch as a sampler or use the horizontal stripe sections to add borders to other holiday décor items. Anchor® Floss on spools make projects like this fun and easy to complete.

MATERIALS

Anchor® Embroidery Floss Spools: 1 of each color



0168

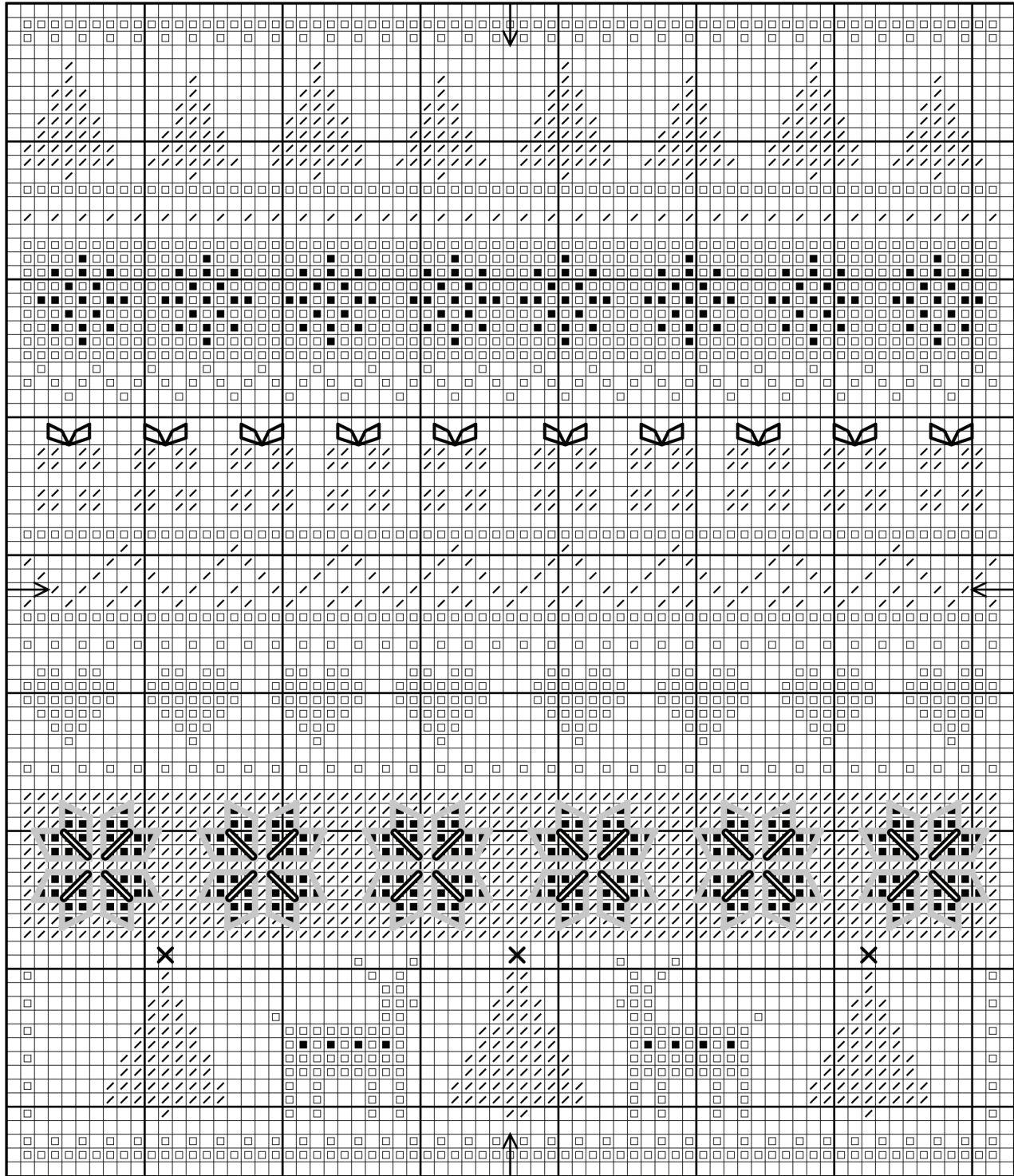


0046


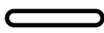
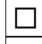





0001

Anchor® Embroidery Hoop. 14 ct Aida, white. Tapestry Needle No. 24.



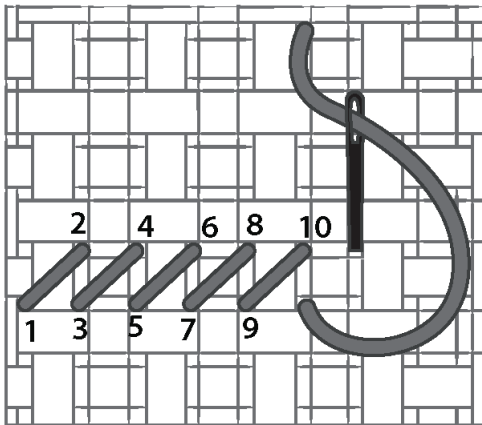
KEY

Symbol	Backstitch	Color
		0168
		0046
		0001

STITCHES

TIP: To separate the floss into strands, cut an 18" length. Hold one end and run the finger of your opposite hand between the strands allowing them to untwist. Thread the needle.

CROSS STITCH DIAGRAM



CROSS STITCH BACKSTITCH

