



 **CROSS STITCH**
SKILL LEVEL: **EASY**

MEASUREMENT

Stitch count: 60 W x 59 H

On 14 count aida design area will be approximately 4¼" x 4¼" (11cm x 11cm)

INSTRUCTIONS

Note: On 14t count Aida use 2 or 3 strands. Split the length of thread before beginning each color.

1. Download Stitch Chart.
2. Determine the center of your fabric. This is where you will begin stitching. Place the fabric in an embroidery hoop.
3. One square on the chart represents one stitch of the design.
4. Thread the needle with 2 strands of embroidery floss. Begin at the center square of the chart.
5. Work **right** to left or **left** to right always crossing the stitch in the same direction. Work stitches of the same color close together and do not move to areas that are more than an inch away.

Featuring Anchor® Embroidery Floss spools

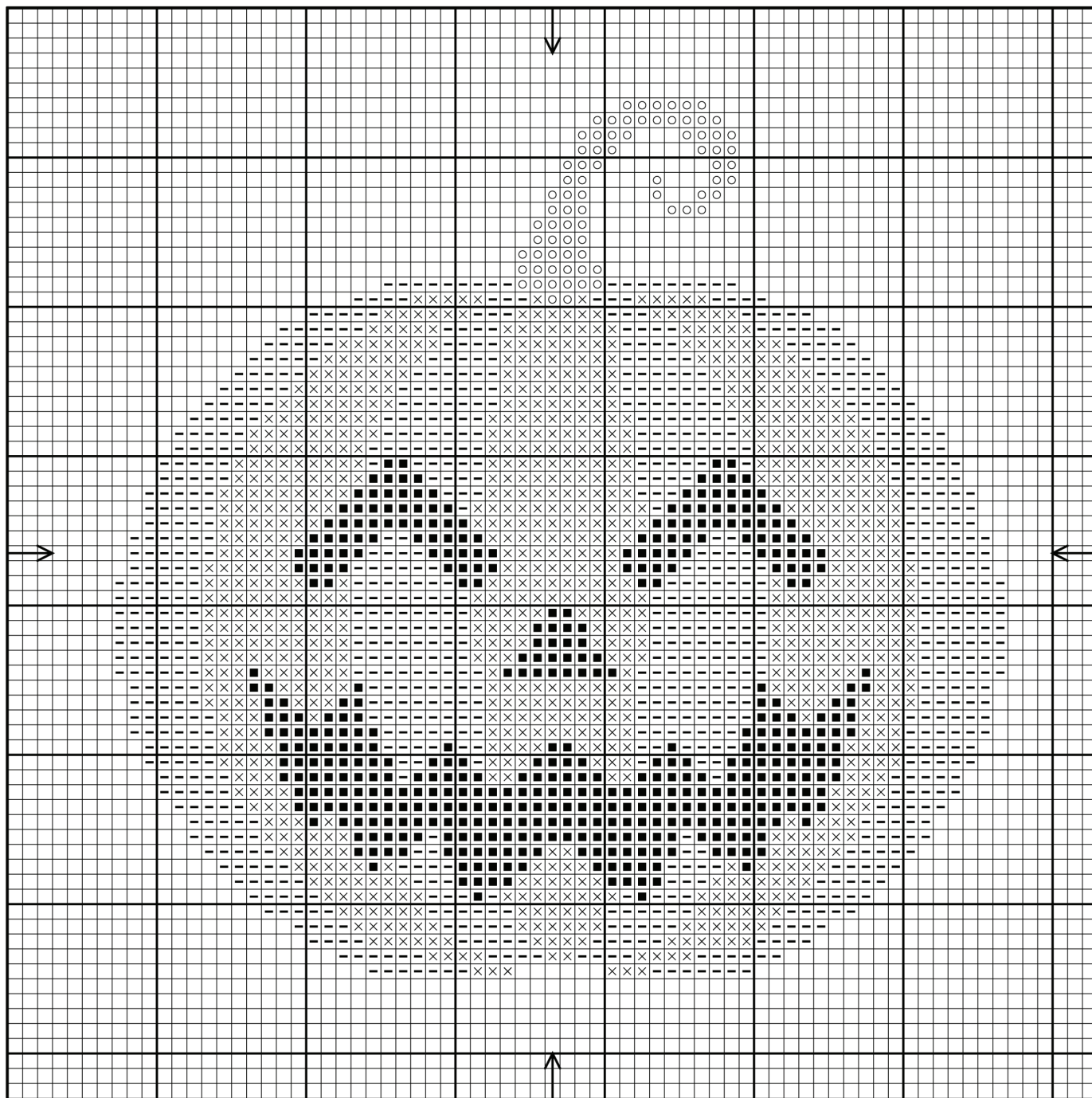
This smiling Jack O'Lantern pumpkin will light up your Halloween decor. A perfect sized motif to frame in a hoop or to add to a tote or décor item, Anchor® Floss on spools makes it easy.

MATERIALS

Anchor® Embroidery Floss Spools: 1 of each color



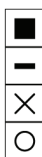
Susan Bates® Hoopla Embroidery Hoop. 14 ct Aida. Tapestry Needle No. 24



KEY

Symbol

Cat. No.



0403

1003

0314

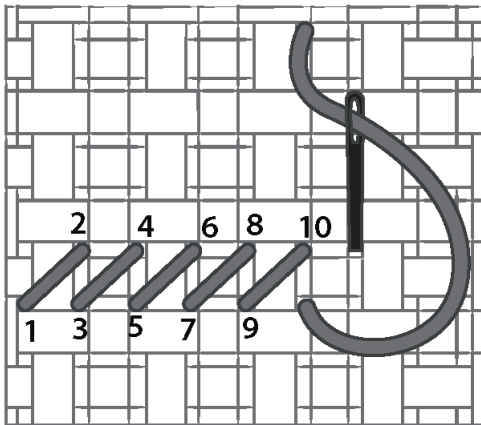
0238



STITCHES

TIP: To separate the floss into strands, cut an 18" length. Hold one end and run the finger of your opposite hand between the strands allowing them to untwist. Thread the needle.

CROSS STITCH DIAGRAM



CROSS STITCH BACKSTITCH

