



⊗ CROSS STITCH
SKILL LEVEL: **EASY**

MEASUREMENT

Stitch count: 39w x 47h.

On 14 count aida design area will be approximately 2¾" x 3½" (7 cm x 9 cm)

INSTRUCTIONS

Note:

- On 14 count Aida use 2 strands. Split the length of thread before beginning each color.
1. Download Stitch Chart.
 2. Determine the center of your fabric. This is where you will begin stitching. Place the fabric in an embroidery hoop.
 3. One square on the chart represents one stitch of the design.
 4. Thread the needle with 2 strands of embroidery floss. Begin at the center square of the chart.
 5. Work right to left or left to right always crossing the stitch in the same direction. Work stitches of the same color close together and do not move to areas that are more than an inch away.

Featuring Anchor® Embroidery Floss spools

A bright red poppy is a colorful accent to any space.

MATERIALS

Anchor® Embroidery Floss Spools: 1 of each color



0216



0305



0306



0403



0009



0011



0046

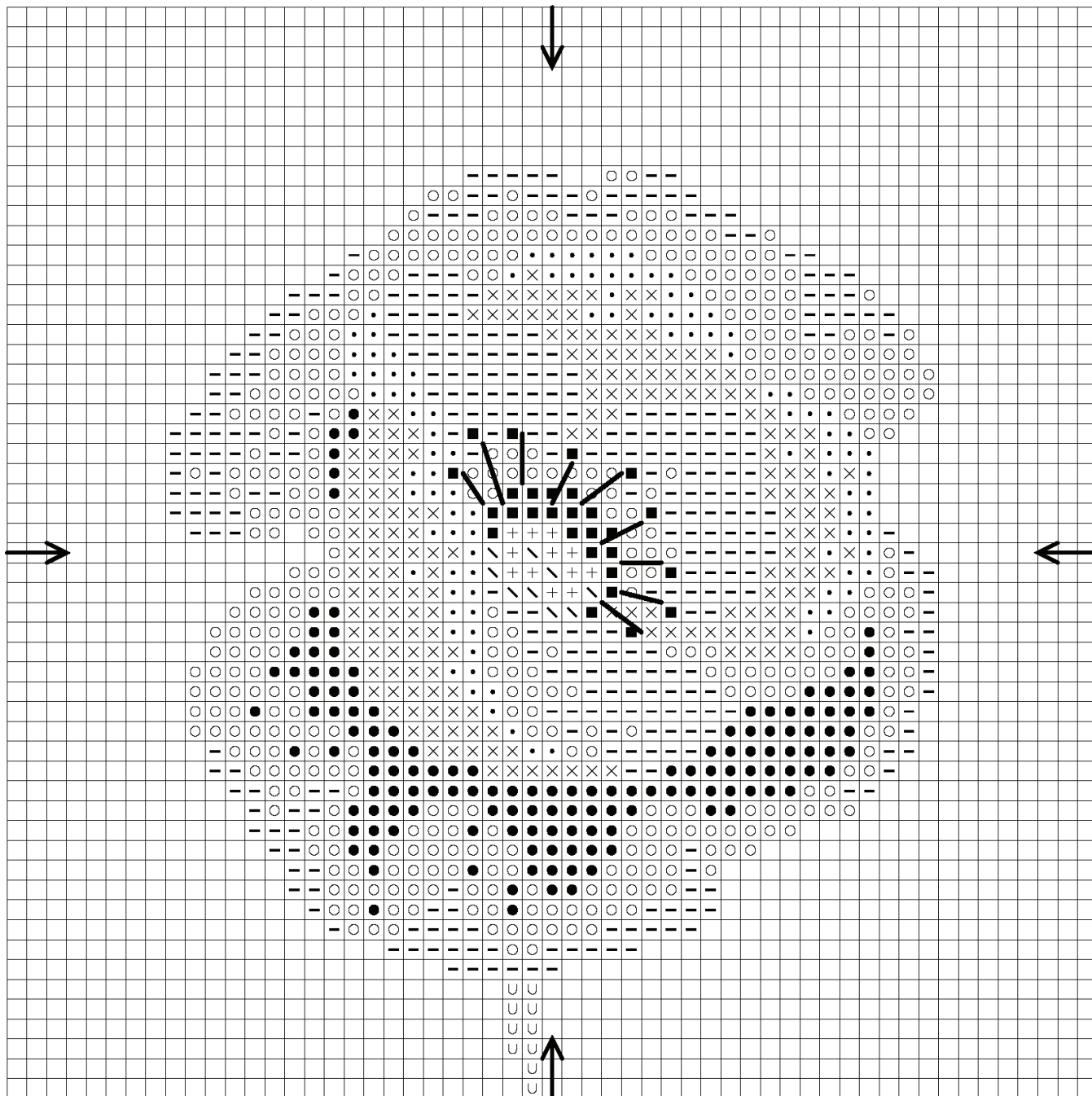


0019



0043

Anchor® Embroidery Hoop. 14 ct Aida. Tapestry Needle No. 24



KEY

- | | | | | | |
|---|------|---|------|---|------|
| U | 0216 | ■ | 0403 | - | 0046 |
| + | 0305 | ◦ | 0009 | ○ | 0019 |
| ↘ | 0306 | × | 0011 | ● | 0043 |

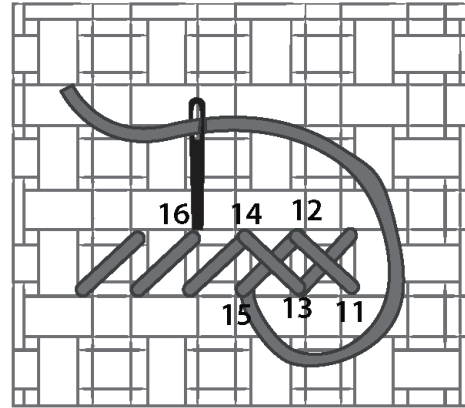
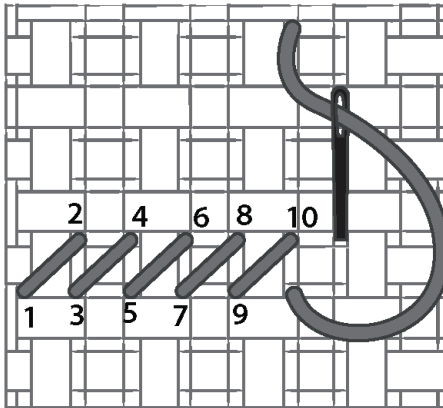
— Backstitch



STITCHES

TIP: To separate the floss into strands, cut an 18" length. Hold one end and run the finger of your opposite hand between the strands allowing them to untwist. Thread the needle.

CROSS STITCH DIAGRAM



CROSS STITCH BACKSTITCH

