



Pink Option

⊗ CROSS STITCH
SKILL LEVEL: **EASY**

MEASUREMENT

Stitch count: 46w x 46h

On 14 count aida design area will be approximately 3¼" x 3¼". (8.5cm x 8.5cm)

INSTRUCTIONS

Note: On 14 count Aida use 2 strands. Split the length of thread before beginning each color.

1. Download Stitch Chart on page 2. An alphabet is included on page 3 so that you can personalize the design for your pet.
2. Determine the center of your fabric. This is where you will begin stitching. Place the fabric in an embroidery hoop.
3. One square on the chart represents one stitch of the design.
4. Thread the needle with 2 strands of embroidery floss. Begin at the center square of the chart.
5. Work **right** to left or **left** to right always crossing the stitch in the same direction. Work stitches of the same color close together and do not move to areas that are more than an inch away.

Featuring Anchor® Embroidery Floss spools

Fur babies are family. Personalize this paw print design for your furry friend.

MATERIALS

Anchor® Embroidery Floss Spools: 1 of each color

Pink Option (Shown above)



0400 0047 0041 0050

Blue Option (Shown right)



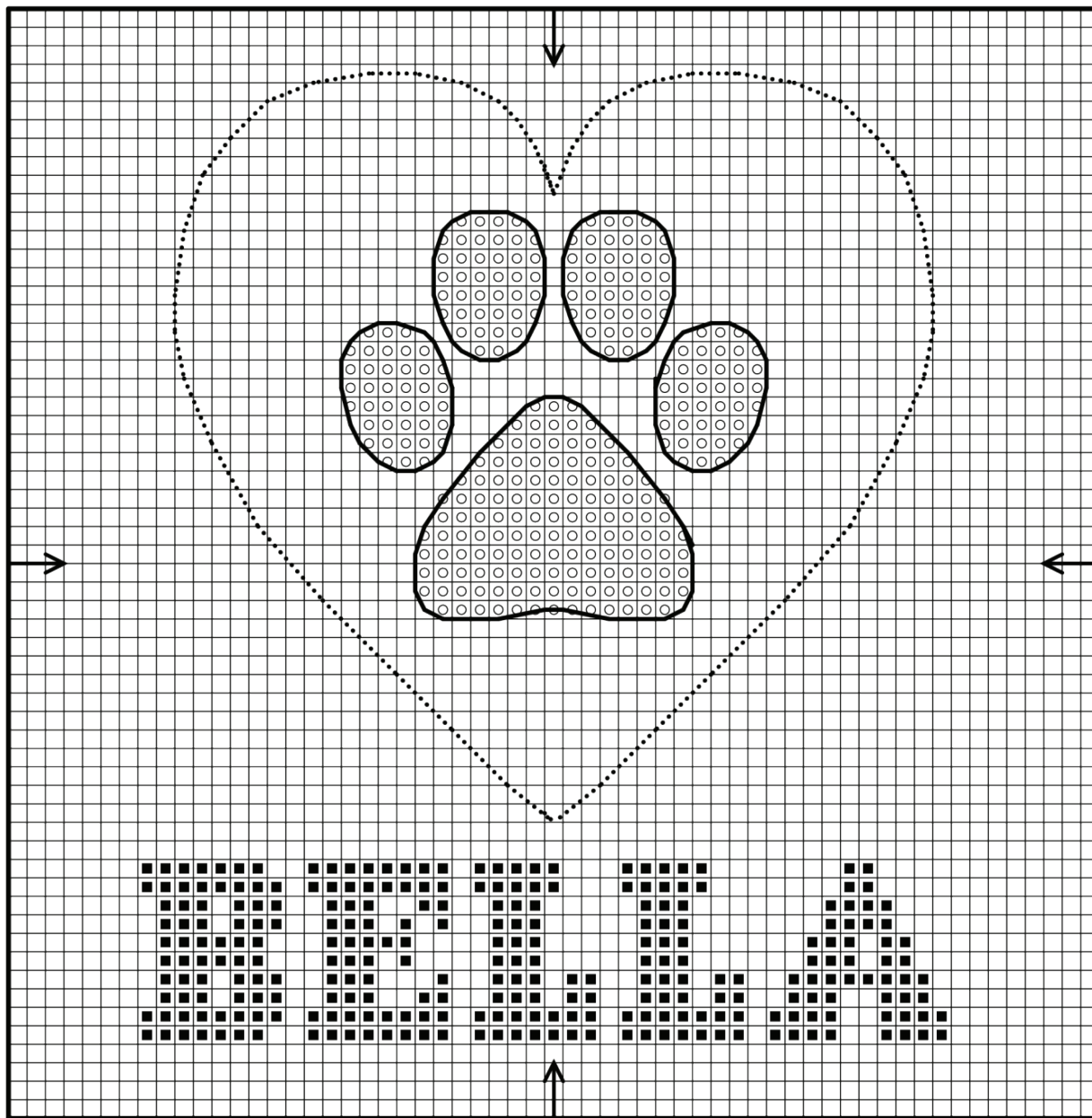
0400 0047 0161 0160

6" Anchor® Embroidery Hoop. 14 ct Aida. Tapestry Needle No. 24.

Blue Option

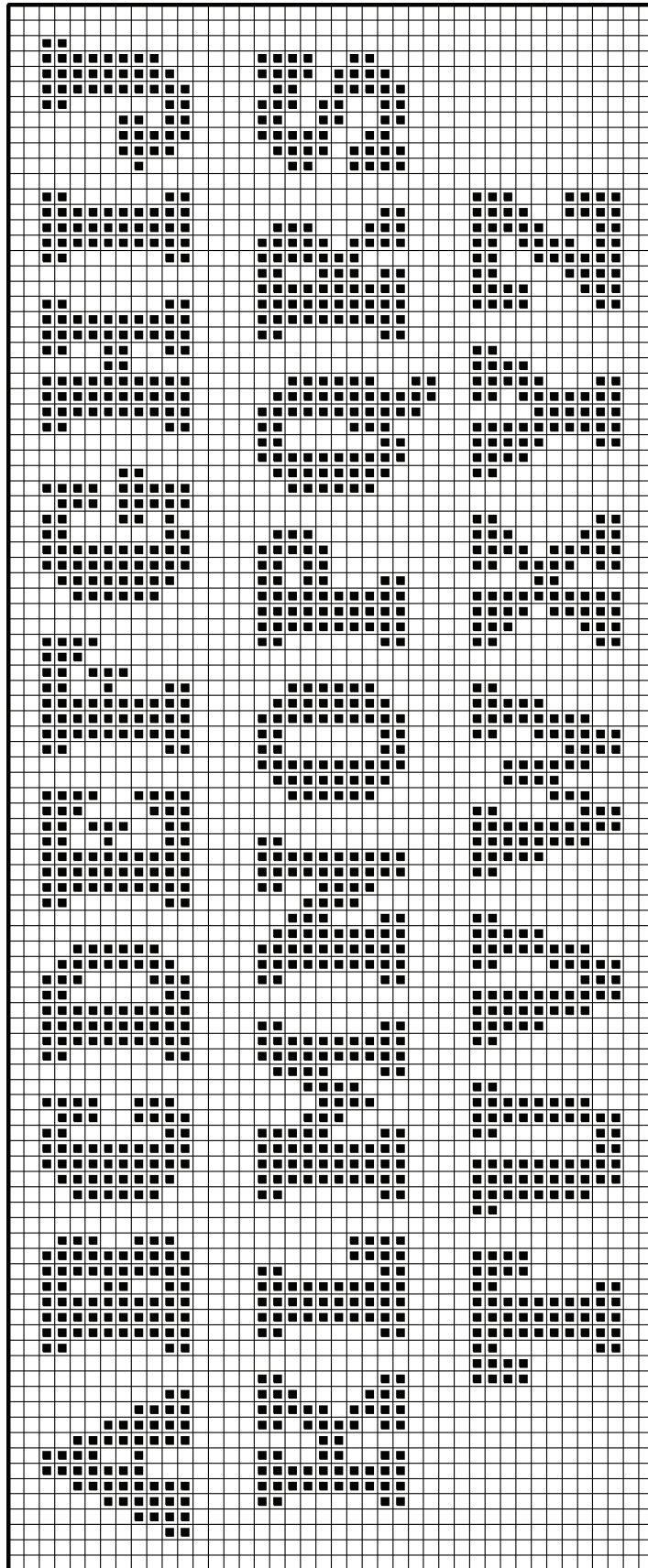


Chart



KEY

Symbol	Note	Pink Option	Blue Option
—	Backstitch	0400 Grey Med.	0400 Grey Med.
•••••	Backstitch	0047 Carmine Red	0047 Carmine Red
○		0041 Carmine Rose Med. Lt.	0161 Med. Blue
■		0050 China Rose Med.	0160 Lt. Blue

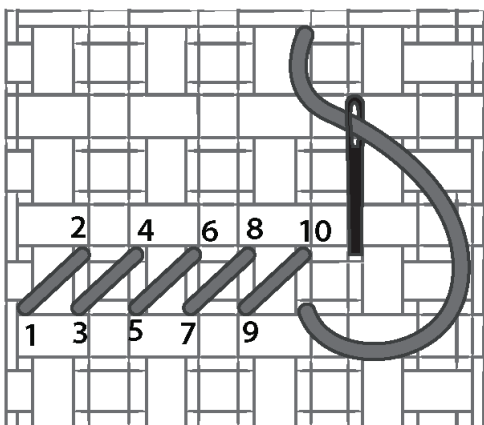




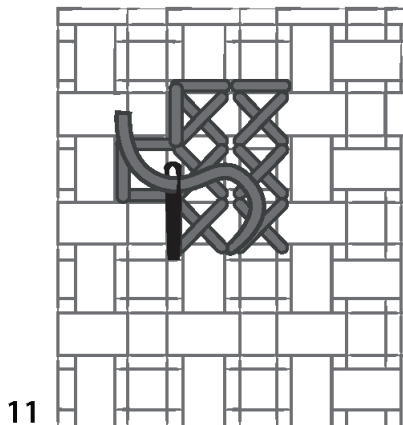
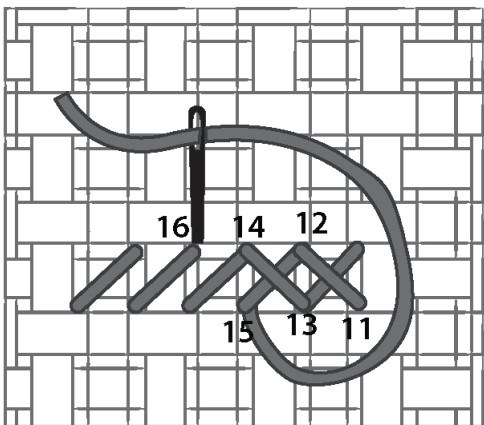
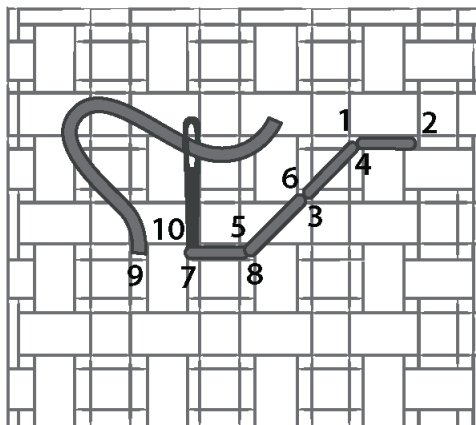
STITCHES

TIP: To separate the floss into strands, cut an 18" length. Hold one end and run the finger of your opposite hand between the strands allowing them to untwist. Thread the needle.

CROSS STITCH DIAGRAM



CROSS STITCH BACKSTITCH



11