



Celtic Placemat

Designed by Susan Lowman.

Placemat measures 11½" high x 19½" wide.

AUNT LYDIA'S® "Classic Crochet Thread", Size 10:
1 ball 226 Natural.

Steel Crochet Hook: 1.5mm [US 7].
Tapestry needle.

GAUGE: 12 mesh = 4"; 12 rows = 4" in filet pattern.
CHECK YOUR GAUGE. Use any size hook to obtain the gauge.

Special Abbreviations for Chart

Block (●) = Dc in next 3 sts.

Mesh (□) = Ch 2, skip next 2 sts, dc in next st.

Picot = Ch 2, slip st in top of last sc made.

NOTE: If your dc are NOT tall enough to obtain gauge, substitute with an extended dc in instructions and Special Abbreviations:

Extended dc = Yo and draw up a loop in next st, yo and draw through one loop on hook, [yo and draw through 2 loops on hook] twice.

PLACEMAT

Row 1 (Right Side): Ch 107; dc in 8th ch from hook, [ch 2, skip next 2 ch, dc in next ch] 33 times; turn – 34 mesh.

Row 2: Ch 5, dc in next dc, [2 dc in next ch-1 space, dc in next dc] 32 times, ch 2, skip 2 ch of turning ch, dc in next ch; turn – 32 blocks and 2 mesh.

Row 3: Ch 5, dc in next 7 dc, * [ch 2, skip next 2 dc, dc in next dc] 4 times **, dc in next 12 dc; repeat from * to last 2 blocks and 1 mesh, end at **; dc in next 6 dc, ch 2, dc in 3rd ch of ch-5; turn.

Rows 4-58: Continue in this manner, following chart and working blocks and meshes as charted.

Edging

Ch 1, sc in first dc, * [2 sc in next space, sc in next dc] twice, picot; repeat from * 15 times more, 2 sc in next space, sc in next dc, (3 sc, picot, 3 sc) all in next ch-5 space, [2 sc around post of next dc, sc in ch at base of same dc, picot, 2 sc in next space] 28 times, 2 sc around post of next dc, (sc, picot, sc) all in free loop of beginning ch, ** [2 sc in next space, sc in next free loop of next ch] twice, picot; repeat from ** 15 times more, 2 sc in next space, sc in free loop of next ch, (3 sc, picot, 3 sc) all in next ch-5 sp, [2 sc around post of next dc, sc in top of same dc, picot, 2 sc in next space] 28 times, 2 sc around post of next dc, sc in same dc as first sc, picot; join with a slip st in first sc. Fasten off. Weave in ends.

AUNT LYDIA'S® "Classic Crochet Thread", Size 10,
Art. 154 available in white and ecru 400 yd (368 m) and solid color 350 yd (322 m) and shaded color 300 yd (276 m) balls.

ABBREVIATIONS: ch = chain; dc = double crochet; mm = millimeters; sc = single crochet; st(s) = stitch(es); yo = yarn over; * or ** = repeat whatever follows the * or ** as indicated; [] = work directions in brackets the number of times specified.

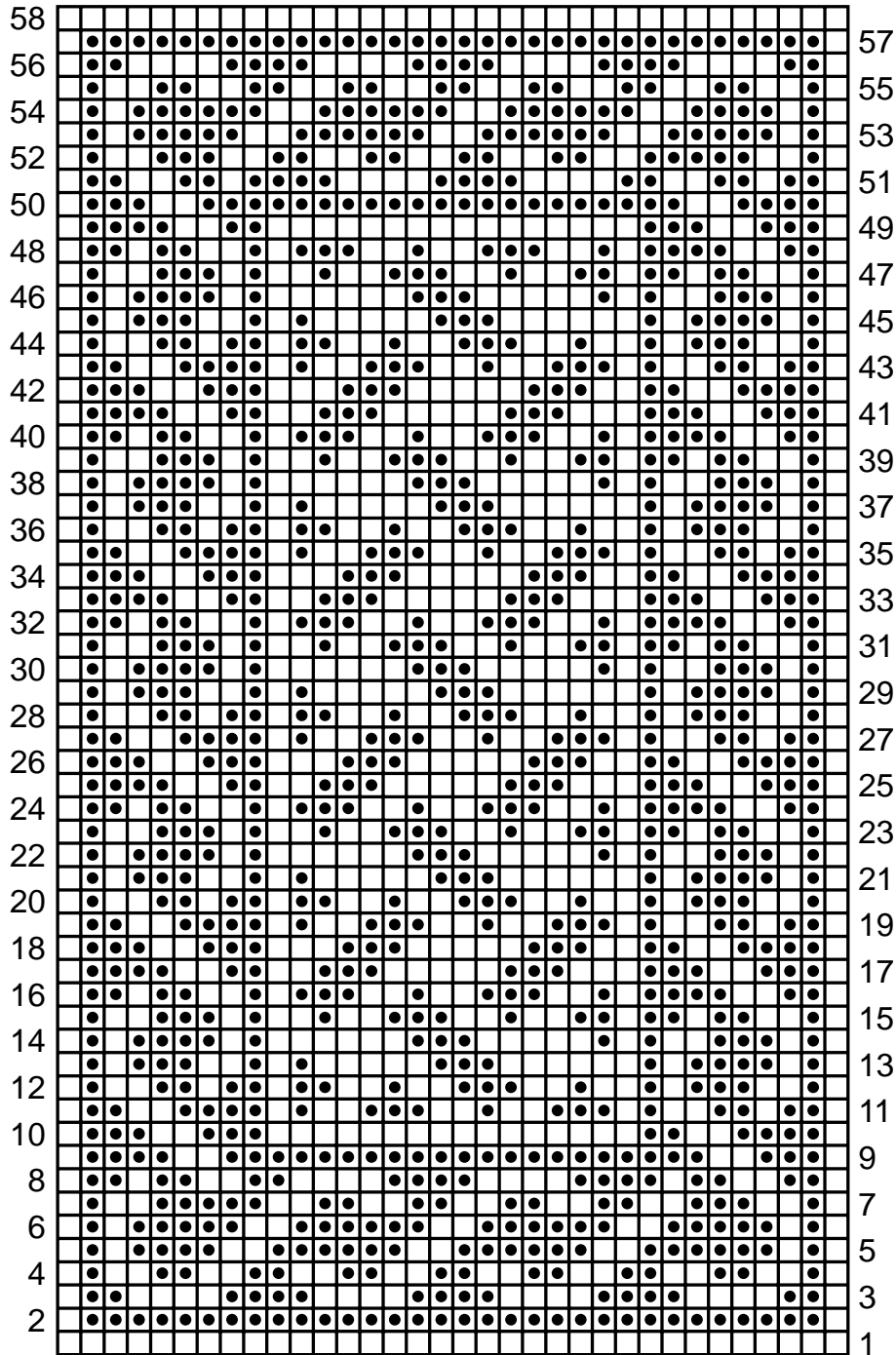


CHART KEY

- = space
- = block