



Quilt Block Filet Pillow

Interest in filet crochet is on the rise. This contemporary, quilt-inspired pillow makes good use of the filet technique.

Designed by Susan Lowman.

Pillow measures 18" x 18".

AUNT LYDIA'S® Classic Crochet Thread, Size 10: 2 balls 310 Copper Mist

Crochet Hook: 1.65mm [US 7].
18 x 18" premade pillow (or 18" x 18" pillow form and 5/8 yard of 44" wide fabric), sewing pins, sewing needle, matching sewing thread, yarn needle.

GAUGE: 12 filet blocks or mesh = 4"; 12 rows = 4" in filet pattern. **CHECK YOUR GAUGE. Use any size hook to obtain the gauge.**

SPECIAL STITCHES

edc (extended double crochet) = Yarn over, insert hook in next stitch, yarn over and pull up loop, yarn over and draw through 1 loop on hook, [yarn over, draw through 2 loops on hook] 2 times.

block = Edc in each of next 3 sts.

mesh = Ch 2, skip next 2 sts, edc in next st.

NOTES

1. Pillow quilt block is worked following filet chart. Rows 1 and 2 of chart are written in detail below, to help you get started.
2. Border is worked around outside edge, after charted pattern is completed.
3. When using filet chart, read odd-numbered rows (Right Side rows) from right to left. Read even-numbered rows (Wrong Side rows) from left to right. Begin each row with a ch 3 (counts as first edc), then work blocks and mesh, as indicated in chart, to end of row. Turn at the end of each row, except Row 53.

QUILT BLOCK PILLOW

Ch 163.

Row 1 (Right Side): Edc in 5th ch from hook (beginning ch counts as first edc), edc in each remaining ch across, turn—160 sts.

Row 2: Ch 3 (counts as first edc here and throughout), edc in each of next 3 sts (block made), *ch 2, skip next 2 sts, edc in next st (mesh made); repeat from * across to last 3 sts, work block, turn – 2 blocks and 51 mesh.

Continue Charted Pattern

Rows 3–53: Work Rows 3–53 of filet chart. Do not turn at the end of Row 53.
Do not fasten off.

Border (Right Side): Ch 1, work 3 sc in top of last edc of Row 53 (corner made), work 2 sc around post of the last edc of Row 53, work 3 sc evenly spaced across end of each remaining row across side edge; working across opposite side of foundation ch, 3 sc first ch (corner made), sc in each remaining ch across to last ch, 3 sc in last ch (corner made), work 2 sc in next 2 ch of beginning ch, work 3 sc evenly spaced across end of each remaining row of next side edge; working across sts of Row 53, 3 sc in first st (corner made), sc in each st across to first corner; join with slip st in first sc. Fasten off.

FINISHING

Weave in ends. Wash and block crocheted piece to 18 x 18" square. Allow to dry completely.

Pillow Form Cover (optional)

Note: If you are using a premade pillow, this step is not required.

Cut fabric into 2 pieces, each measuring 19" x 19" square. With Right Sides of fabric together, sew three sides together, with 1/2" seam allowance. Turn piece Right Side out. Insert pillow form, and sew last side closed (use any hidden or invisible stitch desired).

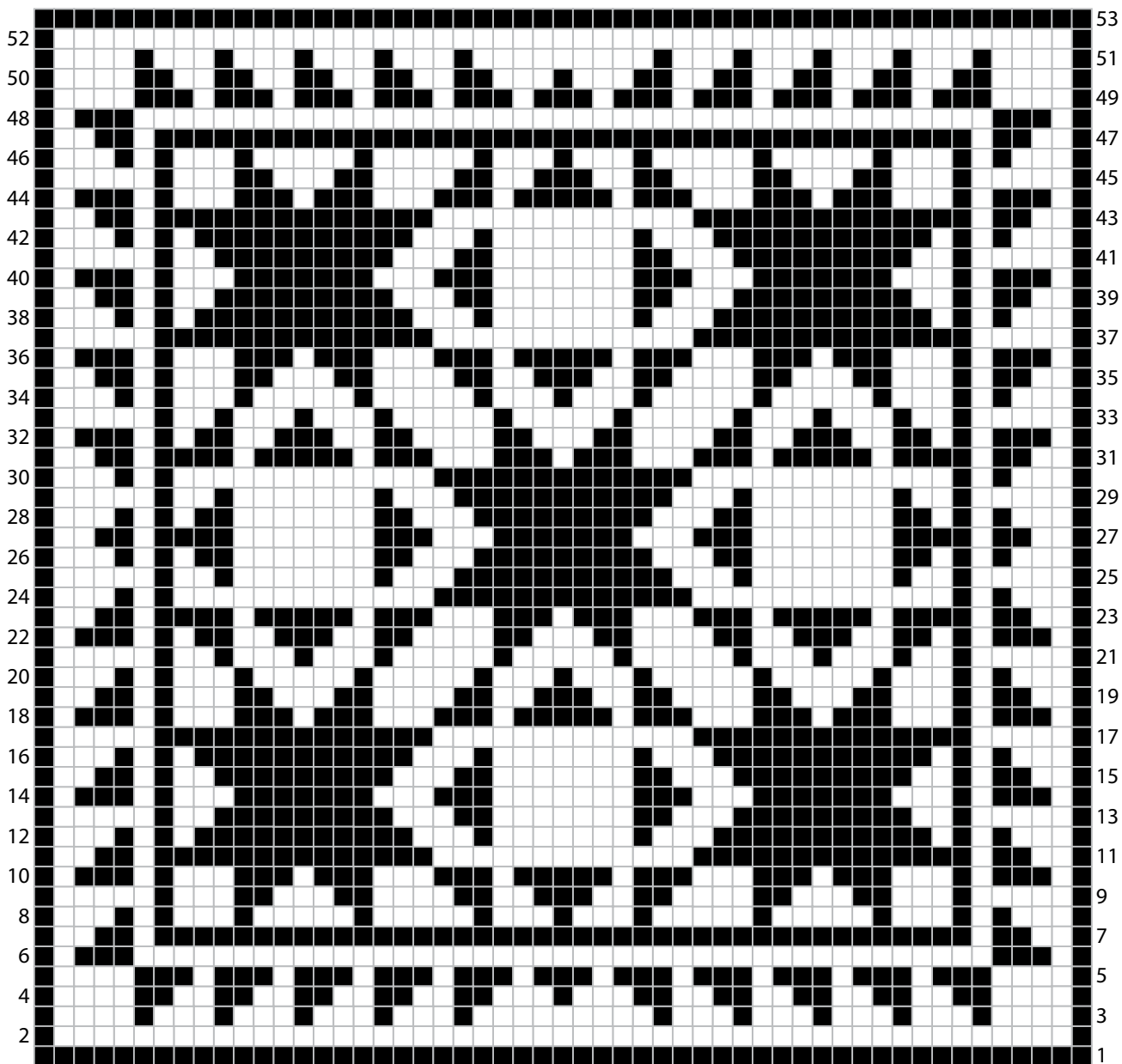
Assembly

Pin edges of crocheted piece to edges of pillow front. With sewing needle and matching thread, sew edges of crocheted piece to edges of pillow.

AUNT LYDIA'S® Classic Crochet Thread, Size 10, Art. 154 available in white & ecru 400 yd; solid color 250 yd; shaded color 300 yd balls.

ABBREVIATIONS: **ch** = ch; **sc** = single crochet; **st(s)** = stitch(es); **[]** = work directions in brackets the number of times specified; ***** = repeat whatever follows the * as indicated.

■ block = Edc in each of next 3 sts.
□ mesh = Ch 2, skip next 2 sts, edc in next st.



Notes:

1. Read odd-numbered rows (Right Side rows) from right to left. Read even-numbered rows (Wrong Side rows) from left to right.
2. Begin each row with ch 3 (counts as first edc).
3. Turn at the end of each row, except Row 53. Do not fasten off at the end of Row 53.
4. Work border, following written instructions, after Row 53 is completed.