



MATERIALS

Aunt Lydia's® Classic™ Crochet Thread size 10 (White: 400 yds/366 m; Colors: 350 yds/320 m)

| | |
|-------------------------------|---------------|
| Elf 1: White (1) | 1 ball |
| Elf 2: Atom Red (2160) | 1 ball |
| Elf 3: Wasabi (0397) | 1 ball |
| Elf 4: Aqua (0450) | 1 ball |

Note: One ball of each color will make approx 10 Elves.

Size U.S. B/1 (2.25 mm) Susan Bates® Silvalume® crochet hook for Elfs Poncho. Size U.S. 7 (1.5 mm) Susan Bates® Steelite® crochet hook for Elfs Hat **or size needed to obtain gauge**. Pipe cleaner per elf 12" [30.5 cm] long. 1 medium wooden ball for Head 2¼" [5.5 cm] diameter. 4 small wooden balls for Hands & Feet. **(Notes from designer:** If head ball is significantly different in size the hat size may need to be adjusted. I bought an assorted bag of wooden balls and used a smaller ball for the hands and a slightly larger one for the feet). Small purchased pom-pom. Hot Glue Gun.

Note: These decorations contain small parts and are not suitable for children under 8 years of age.



CROCHET | SKILL LEVEL: **EASY**

ABBREVIATIONS

| | | |
|----------------------------|----------------------------|---------------------------|
| Approx = | Rem = Remaining | Sp(s) = Space(s) |
| Approximately | Sc = Single crochet | St(s) = Stitch(es) |
| Beg = Beginning | Sc2tog = Draw up a | |
| Ch = Chain(s) | loop in each of next | |
| Dc = Double crochet | 2 sc. Yoh and draw | |
| PM = Place marker | through all 3 loops | |
| Rep = Repeat | on hook | |
| Rnd(s) = Round(s) | Sl st = Slip stitch | |

MEASUREMENTS

Approx 3½" x 5½" [9 x 14 cm].

GAUGES

26 sc and 28 rows = 4" [10 cm] with U.S. B/1 (2.25 mm) crochet hook
36 sc and 40 rows = 4" [10 cm] with U.S. 7 (1.5 mm) crochet hook

INSTRUCTIONS

ELF'S TOP

Notes:

- Ch 3 at beg of rnds counts as dc.
- Join all rnds with sl st to first st.

Designer Tip: Do not fully tighten the Magic Loop until after working Rnd 2. It will make it easier to get your hook into the stitches.

See Diagram on page 3, With U.S. B/1 (2.25 mm) crochet hook, Make Magic Loop.

Video [here](#).

1st rnd: Ch 3. 11 dc in magic loop. Join. PM on top of first dc for beg of rnd. 12 dc.

2nd rnd: Ch 3. 1 dc in same sp as sl st. 2 dc in each dc around. Join. 24 dc.

3rd rnd: Ch 3. 1 dc in same sp as sl st. 1 dc in next dc. *2 dc in next dc. 1 dc in next dc. Rep from * around. Join. 36 dc.

4th rnd: Ch 3. 1 dc in same sp as sl st. 1 dc in each of next 2 dc. *2 dc in next dc. 1 dc in each of next 2 dc. Rep from * around. Join. 48 dc.

5th rnd: Ch 3. 1 dc in same sp as sl st. 1 dc in each of next 3 dc. *2 dc in next dc. 1 dc in each of next 3 dc. Rep from * around. Join. 60 dc.

6th rnd: Ch 5 (counts as ch 2 and 1 dc). 1 dc in same sp as sl st. * Skip next dc. (1 dc. Ch 2. 1 dc) in next dc. Rep from * around. Skip last dc. Join with sl st to 3rd ch of ch-5. Fasten off.

ELF'S HAT

With U.S. 7 (1.5 mm) crochet hook, ch 23.

1st row: 1 sc in 2nd ch from hook and each ch to end of chain. Turn. 22 sc.

2nd row: Ch 1. Sc2tog. 1 sc in each sc to last 2 sts. Sc2tog. Turn. 20 sts. Rep last row until 4 sts rem.

Next row: Ch 1. (Sc2tog) twice. Turn.

Next row: Ch 1. Sc2tog. Fasten off. Weave in ends.

FINISHING

Cut the pipe cleaner as follows:
3" [7.5 cm] for Body
4" [10 cm] for Arms
5" [12.5 cm] for Legs

1. Fold Leg pipe cleaner in half.

2. Fold up the lower end of the Body pipe cleaner approx ½" [3 mm] to form an "U".

3. Place Legs in the "U" and twist closed.

4. Insert top of Body through hole in the center of Elf's Top and push Elf's Top down approx 1½" [4 cm].

5. Place Head wooden ball on top of Body pipe cleaner. Twist Body pipe cleaner end at top of wooden ball in a knot. Make sure it **does not** pull back through the hole.

6. Fold Arm pipe cleaner in half and wrap it around Body pipe cleaner approx ½" [3 mm] below Elf's Top.

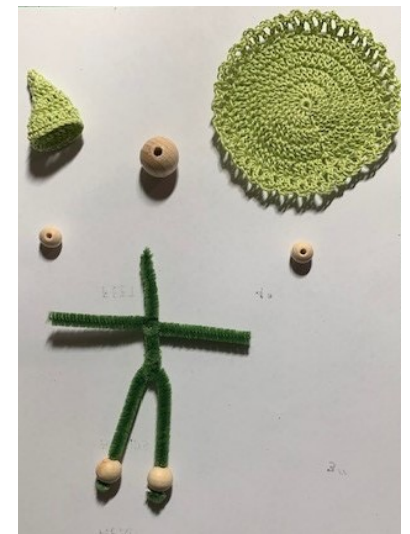
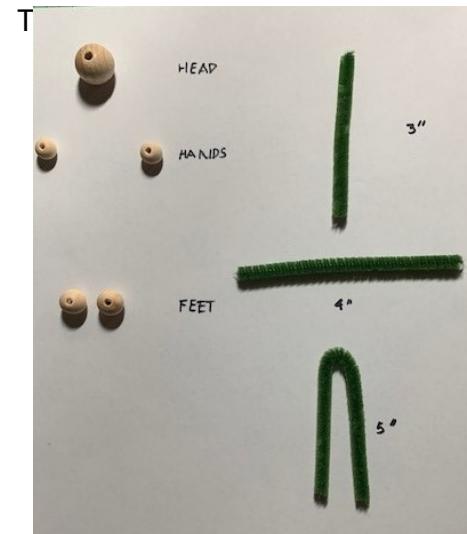
7. Slide Feet wooden balls onto Leg pipe cleaner and secure end. Rep for 2nd leg.

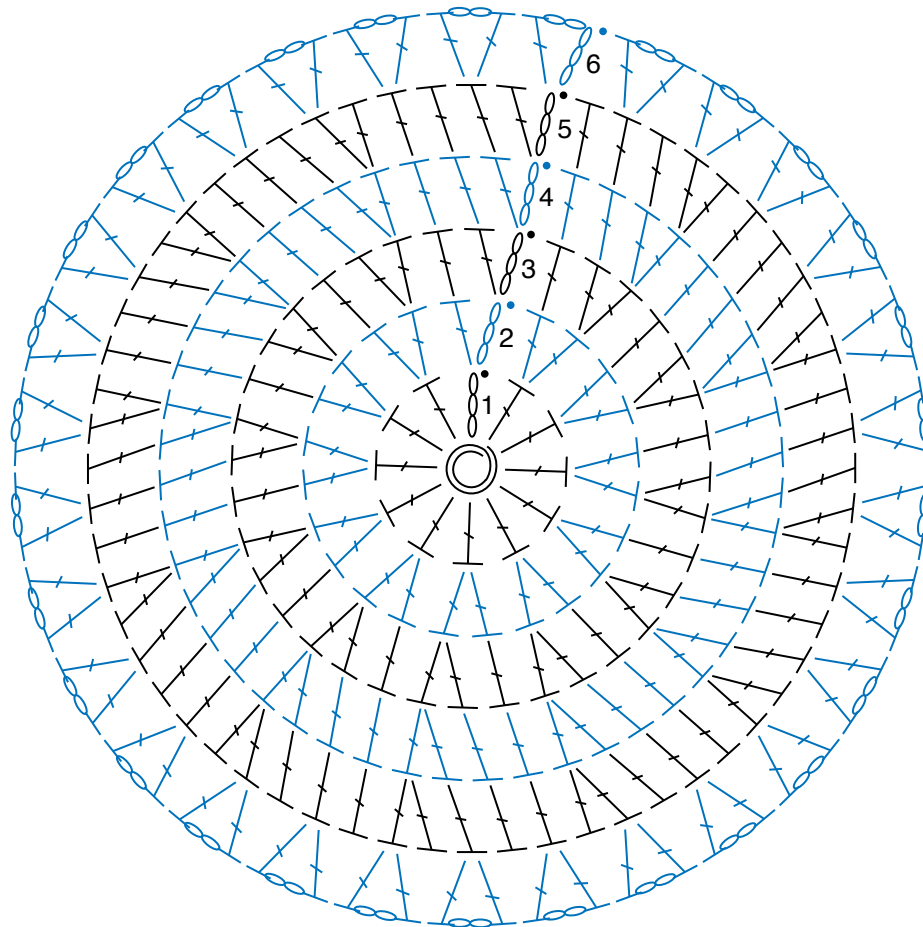
8. Insert the arm through V-stitch edge of Elf's Top and attach hand wooden ball to Arm pipe cleaner. Secure end. Rep for 2nd Arm.

9. Sew back hat seam. Attach pom-pom to tip of Hat.

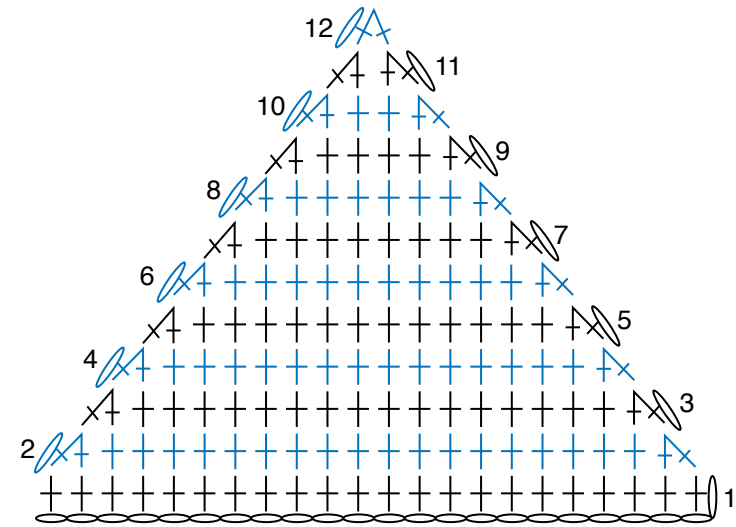
10. Glue Hat to Head wooden ball, keeping seam at back.

11. Insert an ornament hook through 2 sts at top of Hat to hang Tree Elf on Christmas





ELF'S TOP



ELF'S HAT

STITCH KEY

- = chain (ch)
- = slip stitch (sl st)
- † = single crochet (sc)
- ⊥ = double crochet (dc)
- △ = single crochet 2 together (sc2tog)
- ⊙ = magic loop