



Designed by Gwen Buttke  
McGannon

## What you will need:

**AUNT LYDIA'S® Classic Crochet Thread, Size 10:** 1 ball each 275 Coral **A**, 450 Aqua **B**, 422 Golden Yellow **C**, 435 Silver **D**, 536 Passionista **E**, and 930 Monet **F**

**Susan Bates® Steel Crochet Hook:** 1.50 [US 7]

Thread needle

**GAUGE:** Rows 1-7 of half circle motif = 1¾" (4.5 cm) deep.  
**CHECK YOUR GAUGE. Use any size hook to obtain the gauge.**



**AUNT LYDIA'S® Classic Crochet Thread, Size 10,**

Art. A154 available in white, ecru & natural 400 yd (366 m); solid color 350 yd (320 m); shaded color 300 yd (274 m) balls.

# Celebration Doily Garland

We think this garland is perfect for celebration décor. But it is so pretty we would find a place to look at it every day of the year! Crochet it in your favorite colors.

**Half-circle motif measures 6" (15 cm) wide x 3½" (9 cm) deep; half-square motif measures 5¾" (14.5 cm) wide x 3" (7.5 cm) deep; banner measures 48" (122 cm) wide x 3¾" (9.5 cm) deep.**

## SPECIAL STITCHES

**2-dc cl (2 double crochet cluster) =**  
[Yarn over, pull up a loop in indicated st or space, yarn over and draw through 2 loops on hook] twice, yarn over and draw through all 3 loops on hook.

**3-dc cl (3 double crochet cluster) =**  
[Yarn over, pull up a loop in indicated st or space, yarn over and draw through 2 loops on hook] 3 times, yarn over and draw through all 4 loops on hook.

**Fpsc (front post single crochet) =**  
Insert hook from front-to-back-to-front around post of indicated st, yarn over and pull up a loop, yarn over and draw through 2 loops on hook.

**Picot:** Ch 4, sc in 4th ch from hook.

## HALF CIRCLE MOTIF (Make 1 in each A, B and C)

Ch 8, and join with slip st in first ch to form ring.

**Row 1 (right side):** Ch 4 (counts as 1 dc and 1 ch), 12 dc in ring, ch 1, dc in ring, turn - 14 dc and 2 ch-1 spaces.

**Row 2:** Ch 1, sc in first dc, ch 1, \* fpdc around next dc, ch 1, repeat from \* 11 more times, sc in last dc, turn - 2 sc, 13 ch-1 spaces, 12 fpdc.

**Row 3:** Ch 4 (counts as 1 dc and 1 ch), \* 3-dc cl in next fpdc, ch 3, repeat from \* to last fpdc, 3-dc cl in last fpdc, ch 1, dc in last sc, turn -12 3-dc cl and 11 ch-3 spaces.

**Row 4:** Ch 1, sc in first dc, sc in first ch-1 space, \* ch 5, sc in next ch-3 space, repeat from \* to last ch-1 space, ch 5, sc in last ch-1 space, sc in last dc, turn - 12 ch-3 spaces.

**Row 5:** Ch 5 (counts as 1 dc and 2 ch), \* sc in next ch-5 space, ch 5, repeat from \* to last ch-5 space, sc in last ch-5 space, ch 2, dc in last sc, turn - 11 ch-5 spaces.

**Row 6:** Ch 5 (counts as 1 dc and 2 ch), sc in first ch-2 sp, \* ch 5, sc in next ch-5 space, repeat from \* to last ch-2 space, ch 5, sc in last ch-2 space, ch 2, dc in last dc, turn - 12 ch-5 spaces.

**Row 7:** Ch 5 (counts as 1 dc and 2 ch), \* 3-dc cl in next ch-5 space, ch 5, repeat from \* 10 more times, 3-dc cl in next ch-5 space, ch 2, dc in last dc, turn - 12 3-dc cl.

**Row 8:** Ch 5 (counts as 1 dc and 2 ch), 3-dc cl in first ch-2 space, (cl, ch 5, cl) in each ch-5 space to end, 3-dc cl in last ch-2 space, ch 2, dc in last dc, turn - 24 3-dc cl.

**Row 9:** Ch 1, sc in first dc, sc in first ch-2 space, \* ch 5, sc in next ch-5 space, repeat from \* 10 more times, ch 5, sc in last ch-2 space, sc in last dc, turn - 12 ch-5 spaces.

**Row 10:** Ch 6, (counts as 1 dc and 3 ch), sc in first ch-5 space, \* ch 6, sc in next ch-5 space, repeat from \* to end, ch 3, dc in last sc, turn -11 ch-6 spaces.

**Row 11:** Ch 4 (counts as 1 dc and 1 ch), 3-dc cl in first ch-3 space, ch 2 \* (3-dc cl, ch 3, 2-dc cl in first of 3 ch just made, 3-dc cl) in next ch-6 space, ch 2, repeat from \* to last ch-3 space, 3-dc cl in last ch-3 space, ch 1, dc last dc, do not turn - 24 3-dc cl.

## Top Edge

Rotate Motif 180 degrees, so that the edge sts of Rows 1-11 now form the top edge.

**Row 1 (right side):** Working in row edge sts, ch 1, [sc, ch 2] 18 times evenly along edge, then sc in corner - 19 sc and 18 ch-2 spaces.  
Fasten off.

continued...

SHOP KIT

## HALF SQUARE MOTIF

(Make 1 in each E and F, and 1 in both E and F as follows: work rows 1-4 with E, rows 5-6 with F, rows 7-8 with E, and rows 9-11 with F.)

Ch 8, and join with slip st in first ch to form ring.

**Row 1 (right side):** Ch 3 (counts as 1 dc), 12 dc in ring, turn - 13 dc.

**Row 2:** Ch 1, sc in first st, \* ch 3, skip 2 dc, sc in next dc; repeat from \* 3 times, turn - 5 sc, 4 ch-3 spaces.

**Row 3:** Ch 5 (counts as 1 dc and 2 ch here and throughout) \* 3 dc in next ch-3 space, ch 3; repeat from \* twice, 3 dc in next ch-3 space, ch 2, dc in last dc, turn - 4 3-dc groups.

**Row 4:** Ch 5, 3 dc in ch-2 space, ch 3, sc in next ch-3 space, ch 3, (3 dc, ch 2, 3 dc) in corner ch-2 space, ch 3, sc in next ch-3 space, ch 3, 3 dc in next ch-2 space, ch 2, dc in last dc, turn - 4 3-dc groups, 2 sc.

**Row 5:** Ch 5, 3 dc in first ch-2 space, ch 2, \* 3 dc in next ch-3 space, ch 2; repeat from \* to corner ch-2 space, (3 dc, ch 2, 3 dc) in corner, \*\* ch 2, 3 dc in next ch-3 space; repeat from \*\* to last ch-2 space, ch 2, 3 dc in last ch-2 space, ch 2, dc in last dc, turn - 8 3-dc groups.

**Row 6:** Ch 5, 3 dc in first ch-2 space, ch 3, \* sc in next ch-2 space, ch 3; repeat from \* to corner ch-2 space (3 dc, ch 2, 3 dc) in corner space, \*\* ch 3, sc in next ch-2 space; repeat from \*\* to last ch-2 space, ch 3, 3 dc in last ch-2 space, ch 2, dc in last dc, turn - 8 ch-3 spaces.

**Row 7:** Repeat Row 5 - 12 3-dc groups.

**Row 8:** Repeat Row 6 - 12 ch-3 spaces.

**Row 9:** Repeat Row 5 - 16 3-dc groups.

**Row 10:** Ch 1, sc in first st, \* sc in next ch-2 space, ch 1, picot, ch 1, repeat from \* to corner ch-2 space (sc, ch 1, picot, ch 1, sc) in corner space, \*\* ch 1, picot, ch 1, sc in next ch-2 space; repeat from \*\* to end, sc in last dc, do not turn - 17 picots.

## Top Edge

Rotate Motif 180 degrees, so that the edge sts of Rows 1-10 now form the top edge.

**Row 1 (wrong side):** Working in row edge sts, (sc, ch 2) 17 times evenly along edge, then sc in corner - 18 sc and 17 ch-2 spaces.

Fasten off.

## FINISHING

### Joining Band

With right sides facing, arrange motifs as shown in photo or in desired order, and join across top edge as follows:

**Row 1 (right side):** With D, ch 10 and join with slip st in first ch to form ring, ch 1, 15 sc in ring, join with slip st in first of these 15 sc, ch 30, \* 3 hdc in each ch-2 space along top motif, ch 3; repeat from \* for each motif, ch 37 more (40 ch total), slip st in 10th ch from hook to from ring, ch 1, 15 sc in ring, join with slip st in first of these 15 sc, turn.

**Row 2:** (Slip st, ch 1) in each of next 30 ch, \* slip st in next st, ch 1, skip next st, repeat from \* to last 30 ch, (slip st, ch 1) in each of last 30 ch, slip st in next st. Fasten off.

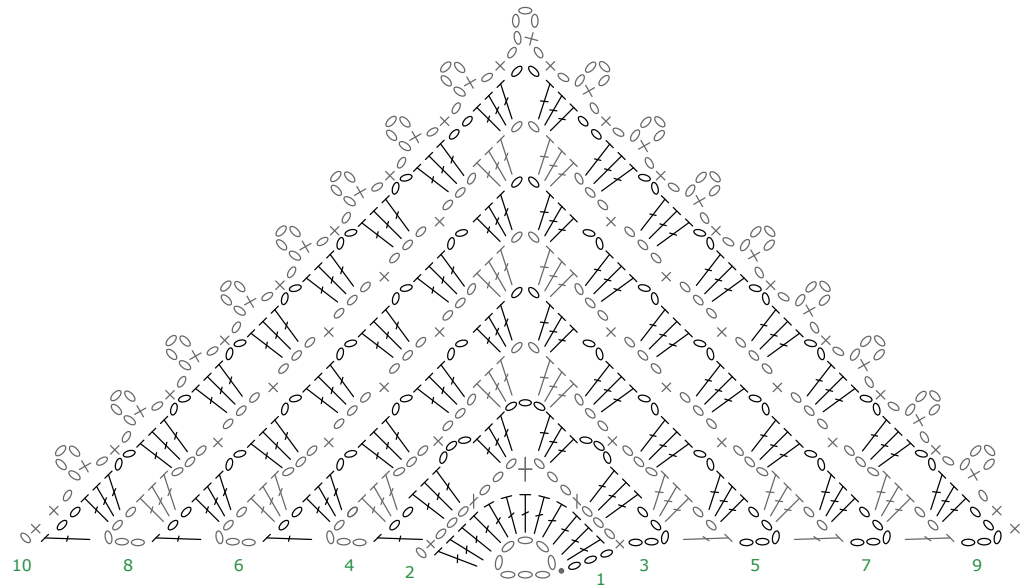
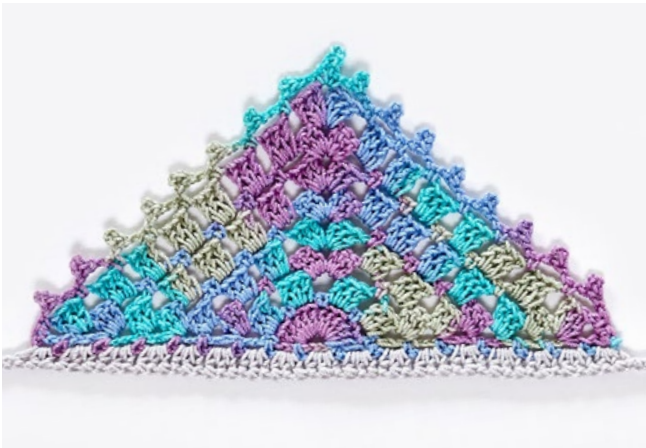
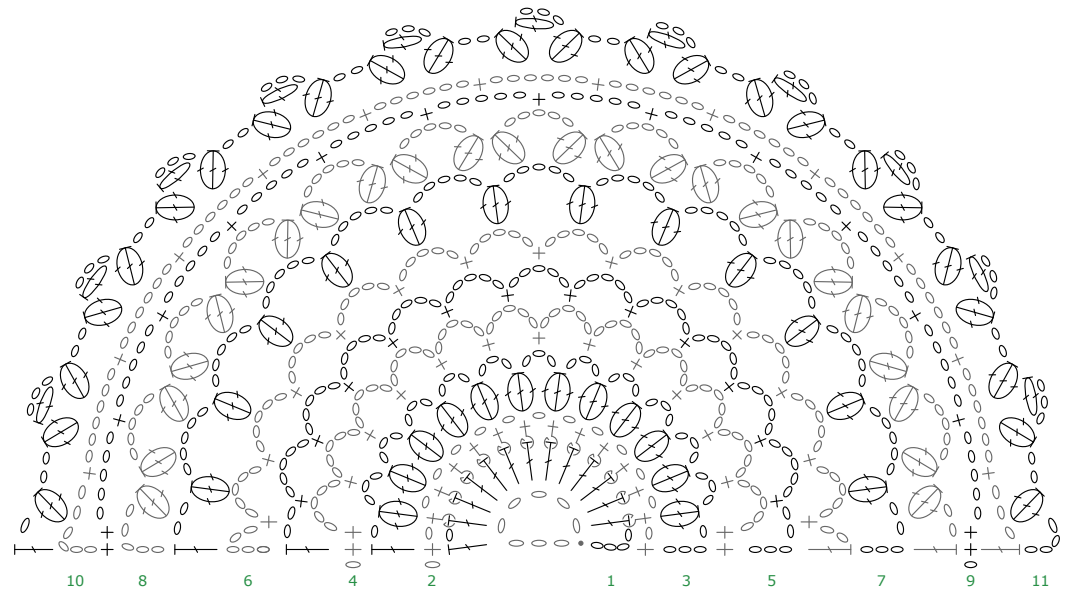
Weave in all loose ends.

## ABBREVIATIONS

A, B, C = Color A, Color B, Color C etc;  
ch = chain; dc = double crochet; hdc = half double crochet; sc = single crochet; st(s) = stitch (es); [ ] = work directions in brackets the number of times specified; \* or \*\* = repeat whatever follows the \* or \*\* as indicated.

*See next page for charts and alternate photos*





Symbol Key

- |   |         |   |         |
|---|---------|---|---------|
| ○ | ch      | ⊕ | fpdc    |
| • | slip st | ⊖ | 2-dc cl |
| + | sc      | ⊗ | 3-dc cl |
| ⊥ | dc      |   |         |