



Designed by Carlotta L. C. Craig

What you will need:

AUNT LYDIA'S® Classic Crochet
Thread size 10: 1 ball 450 Aqua

Susan Bates® Crochet Hook:
1.4 mm [US 8] steel hook

Tapestry Needle

GAUGE: 11 sts = 1" (3 cm); 4 rows
= 1" (3 cm) in dc. CHECK YOUR
GAUGE. Use any size hook to
obtain the gauge.

AUNT LYDIA'S® Classic Crochet
Thread Size 10, Art. 154; white &
ecru 400 yd (366m); solid colors
350 yd (320m); shaded colors 300
yd (274m) balls



Bookmark for Mom

*Mom will treasure this delicately crocheted
bookmark, an heirloom to be cherished.*

Bookmark measures approximately 2¼"
(6 cm) wide by 6¼" (16 cm) long. Butterfly
measures 2¼" (6 cm) wide by 1¼" (3 cm)
tall.

SPECIAL ABBREVIATIONS

dc3tog: *Yarn over, insert hook in next st, yarn
over, draw yarn through st, yarn over, draw
yarn through 2 loops on hook; repeat from *
twice, yarn over, draw yarn through 4 loops on
hook.

HOW TO READ PATTERN

Each solid square is equal to a "block" of "dc
in next dc, dc in next 2 sts or ch-2 space,
dc in next dc". Each open square is equal to
a "space" of "dc, ch 2, skip next 2 sts, dc."
The dc at the end of each square also counts
as the first dc of the next block or space. For
example, a block followed by a space = dc in
next 4 sts, ch 2, skip next 2 sts, dc in next dc.

BOOKMARK

Starting at bottom, ch 30.

Row 1 (Right Side): Dc in 4th ch from hook, dc
in each ch across 9 blocks made), turn.

Row 2: Ch 3 (counts as dc here and
throughout), dc in next 3 dc (block made), *ch
2, skip next 2 sts, dc in next 7 dc (1 space and
2 blocks made); repeat from * once, ch 2, skip
next 2 sts, dc in last 4 dc (1 space and 1 block
made), turn.

Rows 3-24: Continue to work in blocks and
spaces following chart.

Row 25: Slip st in each of first 4 sts (decrease
made), ch 3, dc in each st across to last 4
dc, turn, leaving remaining sts unworked
(decrease made) (7 blocks made), turn.

Rows 26-28: Repeat Row 25 (1 block at end
of last row). Fasten off.

Bottom Trim

Row 1: With right side facing, working across
opposite side of foundation ch, join thread
with slip st in 4th ch, ch 3, dc in each of
next 21 ch sts (7 blocks made), turn, leaving
remaining sts unworked.

Row 2: Slip st in each of first 4 sts (decrease
made), ch 3, dc in each of next 15 dc, turn,
leaving remaining sts unworked.

Row 3: Ch 1, sc in first dc, *ch 3, skip next dc,
sc in next dc; repeat from * across—7 ch-3
spaces.

BUTTERFLY

Head and Body (make 2)

Ch 10.

Row 1: Sc in 2nd ch from hook, sc in next
8 ch (slip st, 3 hdc, slip st) in last ch (head),
working across opposite side of foundation ch,
slip st in each ch across. Fasten off and set
aside.

Large Wing (make 2)

Ch 5.

Row 1 (right side): Sc in 2nd ch from hook
and in each ch across, turn—4 sc.

Row 2: Ch 1, 2 sc in first sc, sc in next 2 sc, 2
sc in last sc, turn—6 sc.

Row 3: Ch 1, sc in each sc across, turn.

Row 4: Ch 5, (counts as tr, ch 1), skip first sc,
tr in next sc, *ch 1, tr in next sc; repeat from *
across, turn—5 ch-1 spaces.

Edging

Round 1: Ch 1, sc in each tr and ch-1 space
across; working across side edge of wing,
work 3 sc in next row-end tr, sc in each of
next 3 row-end sc, working across bottom
edge of foundation ch, sc in each ch across,
working across other side edge, sc in each
of next 3 row-end sc, 3 sc in next row-end tr,
join with slip st in first sc.

Continued...

SHOP KIT

Row 2: Ch 1, sc in first sc, *ch 3, skip next sc, sc in next sc; repeat * 4 more times. Fasten off and set aside. Fasten off and set aside.

Large Wing (make 2)

Ch 3.

Row 1 (wrong side): Sc in 2nd ch from hook and in next ch, turn—2 sc.

Row 2: Ch 1, 2 sc in each sc across, turn—4 sc.

Row 3: Ch 4 (counts as dc, ch 1), skip first sc, dc in next sc, *ch 1, dc in next sc; repeat from * across, turn—3 ch-1 spaces.

Edging

Round 1: Ch 1, sc in each dc and ch-1 space across; working across side edge of wing, work 2 sc in next row-end dc, sc in each of next 2 row-end sc, working across bottom edge of foundation ch, sc in each ch across, working across other side edge, sc in each of next 2 row-end sc, 2 sc in next row-end dc, join with slip st in first sc.

Row 2: Ch 1, sc in first sc, *ch 3, skip next sc, sc in next sc; repeat * twice. Fasten off and set aside.

Antennae

Ch 25. Fasten off. Make an overhand knot on both ends and set aside.

Right Side Assembly

Row 1: With right side facing, hold one large wing with smaller end up. Join thread in first sc, ch 1, sc in first sc, sc in next 2 sc. With right side facing, place small wing behind large wing; insert hook through 4th sc of

large wing and first sc of small wing, working through double thickness, work 2 sc in same st, sc in next sc of small wing. Fasten off.

Left Side Assembly

Row 1: With right side facing, hold other small wing with smaller end up. Join thread in first sc, ch 1, sc in first sc. With right side facing, place remaining large wing behind small wing; insert hook through 2nd sc of small wing and first sc of large wing, working through double thickness, work 2 sc in same st, sc in next 3 sts of large wing. Fasten off.

FINISHING

With tapestry needle, and right sides facing, placing both large wings on same end, sew wings together across last row of wings. Place one head and body on both sides of assembled wings (right side facing out and with head at large wing end) and sew in place. Before head is sewn together, slip center of antennae between head pieces and complete sewing heads together.

With right side of bookmark facing, join thread to first st on last row, ch 3, dc3tog over next 3 dc, ch 50, slip st to bottom of butterfly's body. Fasten off. Weave in ends.

ABBREVIATIONS: ch = chain; dc = double crochet; sc = single crochet; slip st = slip stitch; st(s) = stitch(es); □ = work directions given in brackets the number of times specified; * or ** = repeat whatever follows the * or ** as indicated.

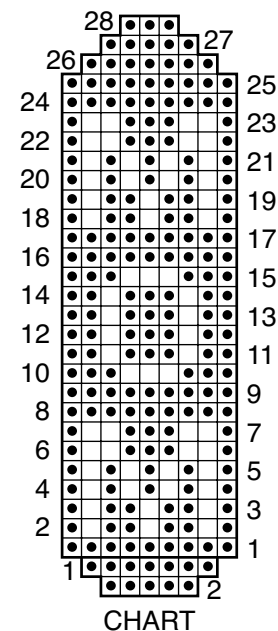
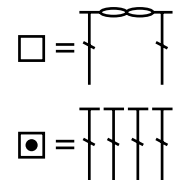
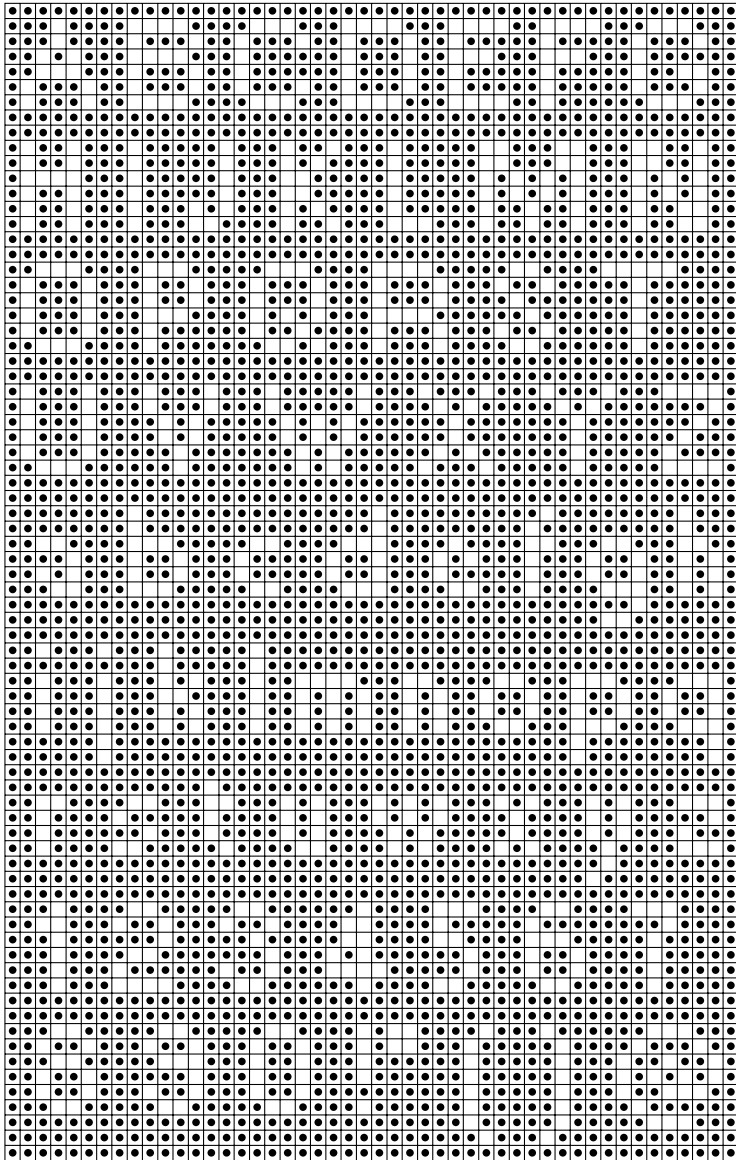


CHART KEY



See Next Page For Alphabet Chart



ALPHABET