



MATERIALS

Aunt Lydia's® Fashion 3 (150 yds/147 m)

Silver (435)

9 balls

Size U.S. C/2 (2.75 mm) crochet hook **or size needed to obtain gauge.** Stitch markers. Yarn needle.



CROCHET | SKILL LEVEL: **INTERMEDIATE**

ABBREVIATIONS

Approx = Approximately

Beg = Beginning

Beg-block (worked at beg of row) = Ch 5 (counts as 2 base ch and first dc). 1 dc in 4th ch from hook and in next ch. 1 dc in next dc—1 block increased

Block = 1 dc in each of next 3 stitches

Ch = Chain(s)

Cont = Continue(ity)

Dc = Double crochet

Fdc (foundation double crochet) = This technique creates a foundation chain and a double crochet stitch in one) = Yoh and draw up a loop through in same st as last dc made. Yoh and draw through 1 loop on hook ("chain"). (Yoh and draw through 2 loops on hook) twice ("double crochet")

End-block (worked at end of row) = Fdc. *Yoh and draw up a loop through "chain" of previous stitch. Yoh and draw through 1 loop on hook. (Yoh and draw through 2 loops on hook) twice. Rep from * once more.

St(s) = Stitch(es)

Pat = Pattern

Rep = Repeat

Yoh = Yarn over hook

MEASUREMENTS

Approx 31½" x 83½" [80 x 212 cm]

GAUGE

9 filet blocks or mesh x 12 rows = 4" [10 cm] in pat

INSTRUCTIONS

Notes:

- Shawl is worked, following filet chart, from the lower center point upwards.
- One filet block is added to beg and end of each row.
- 1st - 6th rows of chart are written in detail to help you get started.
- When working from Chart, *read odd numbered rows from right to left and even numbered rows from left to right.*
- **Tip:** Use a post-it note to keep track of the last row of chart completed.

SHAWL

See charts on pages 3 & 4.

Beg from lower center point, ch 9.

1st row: 1 dc in 4th ch from hook and in each ch to end of chain. Turn. 7 dc.

2nd row: Ch 5 (counts as dc and ch-2). 1 dc in 4th ch from hook and in next ch. 1 dc in next dc - beg - block made. (Ch 2. Skip next 2 sts. 1 dc in next st) twice - 2 mesh made. End-block. Turn. 2 blocks and 2 mesh.

3rd row: Ch 5. Beg-block. (Ch 2. Skip next 2 sts. 1 dc in next st) 4 times - 4 mesh made. End-block. Turn. 2 blocks and 4 mesh.

4th row: Ch 5. Beg-block. (Ch 2. Skip next 2 sts. 1 dc in next st) 6 times - 6 mesh made. End-block. Turn. 2 blocks and 6 mesh.

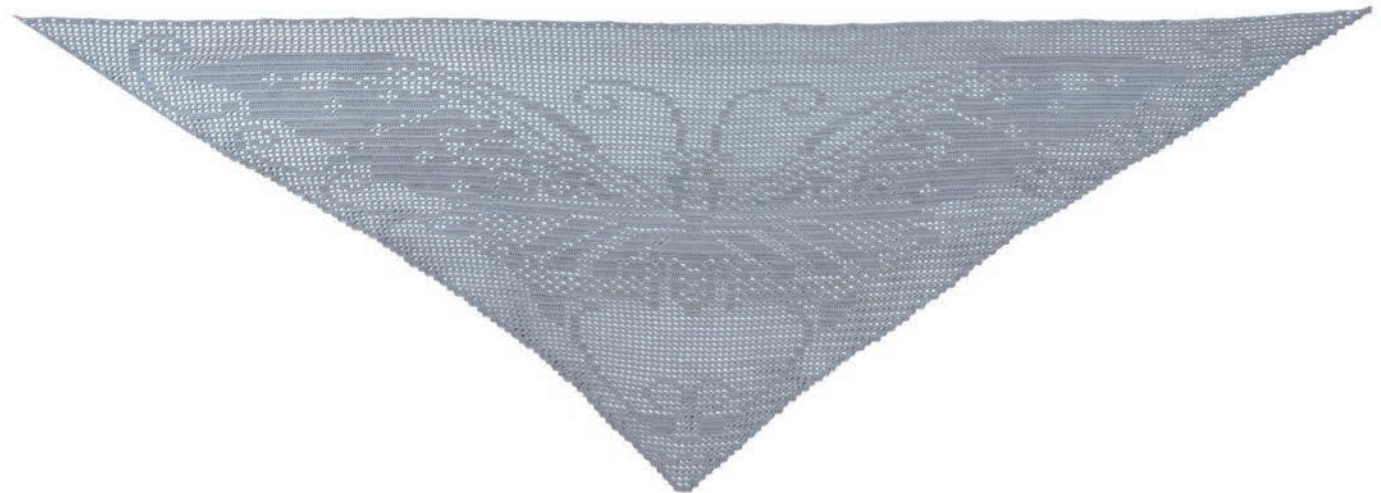
5th row: Ch 5. Beg-block. (Ch 2. Skip next 2 sts. 1 dc in next st) 8 times - 8 mesh made. End-block. Turn. 2 blocks and 8 mesh.

6th row: Ch 5. Beg-block. *(Ch 2. Skip next 2 sts. 1 dc in next st) twice - 2 mesh made. 1 dc in each of next 6 sts - 2 blocks made. Rep from * once more. (Ch 2. Skip next 2 sts. 1 dc in next st) twice. End-block. Turn. 6 blocks and 6 mesh. First 6 rows of Chart are complete.

Cont in Chart until 94th row of Chart is complete. Fasten off.

FINISHING

Weave in ends.



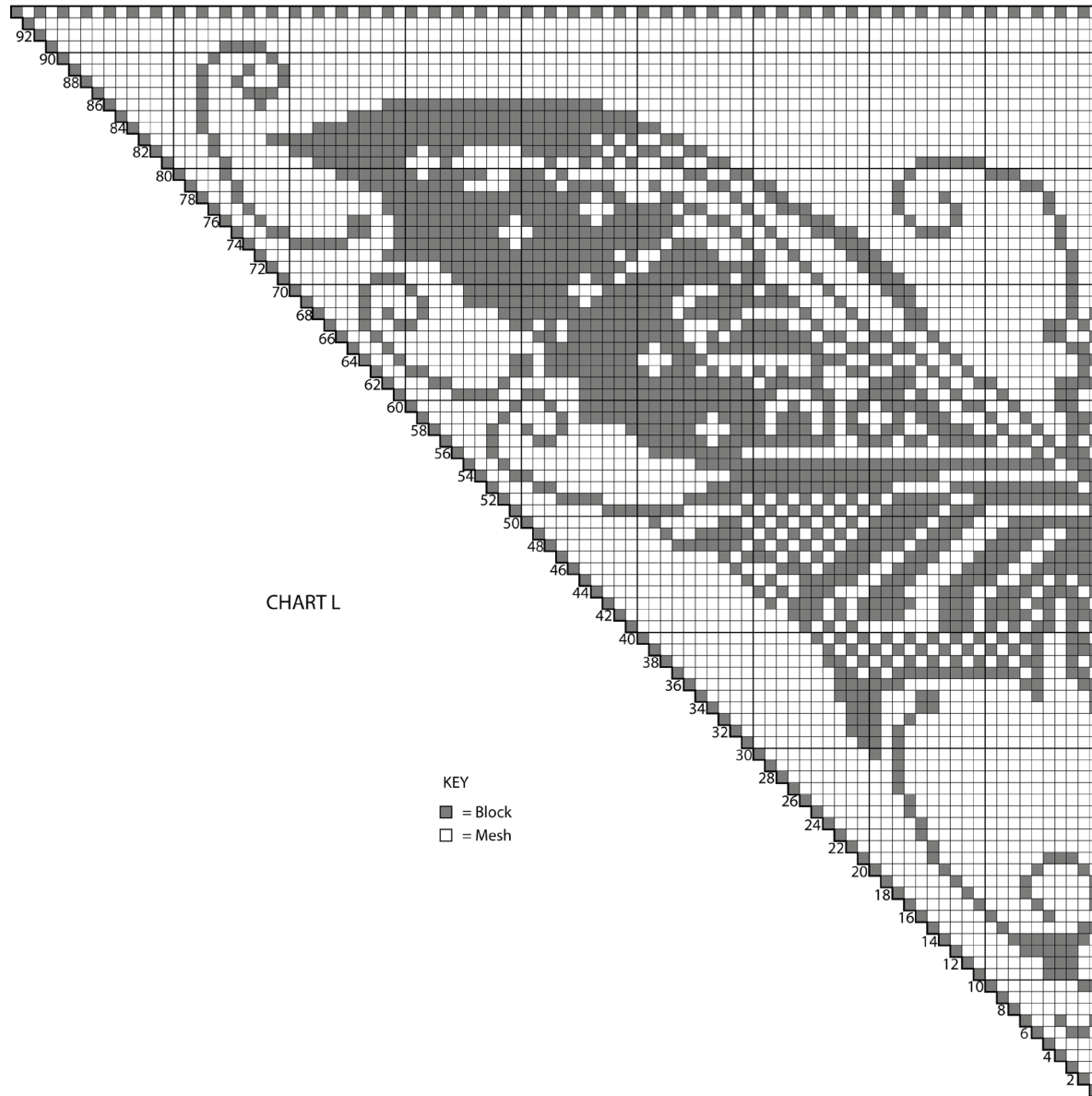


CHART L

KEY

- = Block
- = Mesh

