



## What you will need:

**AUNT LYDIA'S® Classic Crochet Thread**, Size 10: 3 balls 419 Ecrú.

**Susan Bates® Crochet Hook**: 2.25mm [US B-1].

**GAUGE**: 4 clusters = 3"; 10 rows = 4" over pattern. **CHECK YOUR GAUGE**. Use any size hook to obtain the gauge.

**AUNT LYDIA'S® Classic Crochet Thread**, Size 10, Art. 154 available in white & ecru 400 yd (365 m); solid color 350 yd (320 m); shaded color 300 yd (274 m) balls.

# Lacy Shawl

*Keep your shoulders warm in an oh-so-pretty way! This shawl is crocheted in a lovely cluster and bobble stitch pattern starting at the center back point and increasing to the top. It's perfect for formal occasions as well as for more casual days.*

**SHOP KIT**

**Shawl measures 28" vertically at center x 54½" across top.**

## Special Abbreviations

**CL** (Cluster – worked over same st as last st and next st) = ch 3, holding back last loop on hook tr in same st as last sc, holding back last loop on hook tr in top of next cluster, yo and draw through all 3 loops, ch 3, sc in same st as last tr.

**CLB** (Cluster with Bobble – worked over last sc worked and next 2 sts) = ch 3, holding back last loop on hook tr in same st as last sc, holding back last loop on hook 4 tr in next sc, holding back last loop on hook, tr in top of next st, yo and draw through all 7 loops on hook, ch 3, sc in same st as last tr.

## Shawl

**Row 1 (Wrong Side)**: Ch 4; (tr, ch 3, sc, ch 3, tr) all in 4th ch from hook; turn.

**Row 2**: Ch 4, (tr, ch 3, sc) all in first tr, CLB, ch 3, dtr in same st as last sc; turn.

**Row 3**: Ch 4, (tr, ch 3, sc) all into first dtr (½ cluster increased at beginning of row), [CL] twice, ch 3, dtr in same st as last sc (½ cluster increased at end of row); turn.

**Row 4**: Increase ½ cluster at beginning of row as before, CLB, CL, CLB, increase ½ cluster at end of row as before; turn.

**Row 5**: Increase ½ cluster, \* CL; repeat from \* across; increase ½ cluster; turn.

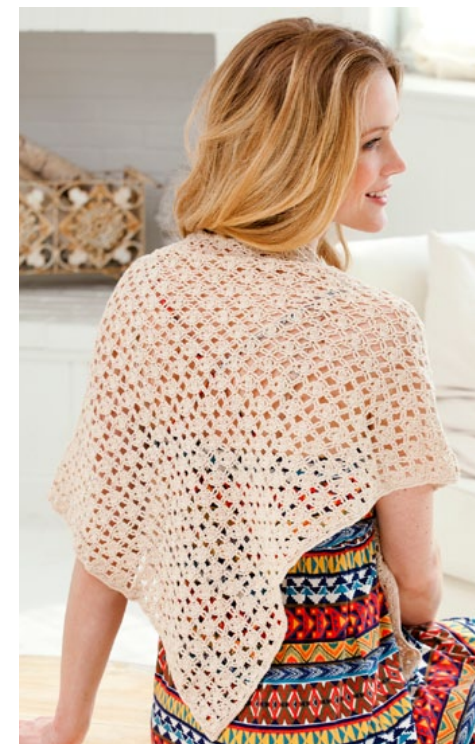
**Row 6**: Increase ½ cluster, CLB, \* CL, CLB; repeat from \* across; increase ½ cluster; turn.

Repeat Rows 5 and 6 until 67 clusters plus ½ cluster at each end have been completed, ending with a right side row. Do not turn, but pivot to work edging as follows:

## Edging

**Round 1**: Working down shaped edge, ch 1, 3 sc around each ch-4 or dtr and sc in top of each ½ cluster down to center point; (hdc, dc, hdc) at point, 3 sc around each ch-4 or dtr and sc into top of each ½ cluster up next shaped edge to top corner; 3 sc in corner, ch 5, \* sc in top of next cluster, ch 5; repeat from \* across top edge to next corner, 3 sc in top of ½ cluster at corner; join with a slip st in first sc.

*Continued...*



**Round 2:** Ch 1, sc in each sc to hdc at point; sc in next hdc, (hdc, dc, hdc) in dc, sc in next hdc, sc in each sc to corner sc, 3 sc in corner sc, sc in next sc, 5 sc in ch-5 loop; \* sc in next sc, 5 sc in next ch-5 loop; repeat from \* to last corner sc; 3 sc in corner sc, sc in last sc; join. Fasten off. Weave in ends.

**Abbreviations:** ch = chain; dc = double crochet; dtr = double treble crochet; hdc = half double crochet; mm = millimeters; sc = single crochet; st(s) = stitch(es); tr = treble crochet; yo = yarn over; \* = repeat whatever follows the \* as indicated; [] = work directions in brackets the number of times specified.

