



Designed by Kathryn White

What you will need:

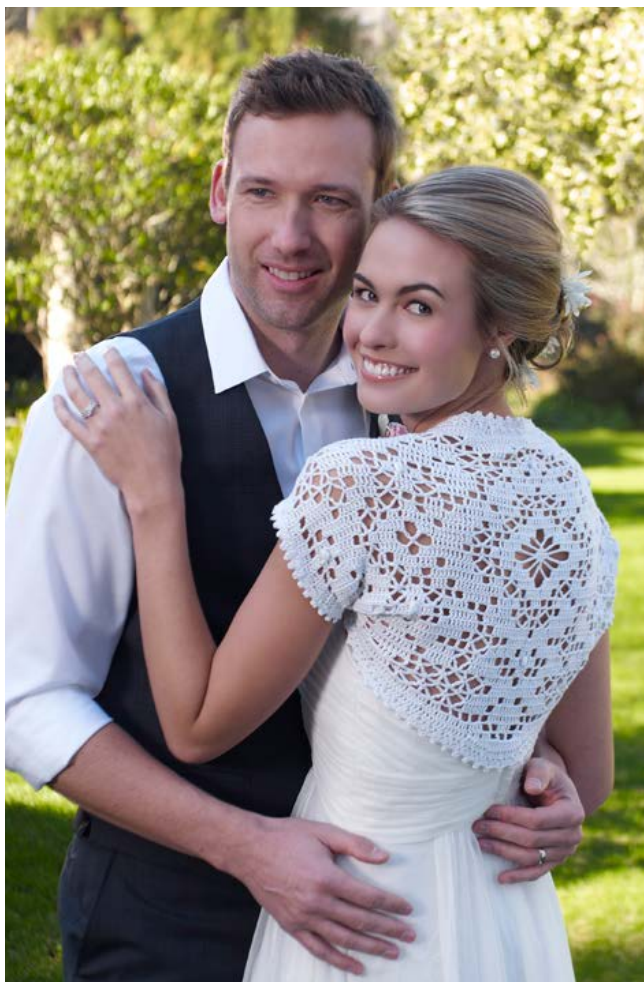
AUNT LYDIA'S® Bamboo Crochet Thread, 100% Viscose from Bamboo Size 3: 5 (6, 7, 8) balls #3001 Icicle

Susan Bates® Crochet Hook:
3.50 mm [US E-4]

Yarn needle

GAUGE: 6 spaces and 7 rows in edc = 3" (7.5 cm). **CHECK YOUR GAUGE.** Use any size hook to obtain the gauge given.

AUNT LYDIA'S® Bamboo Crochet Thread, 100% Viscose from Bamboo Size 3, Art. 147 available in 150 yd (135 m) balls



Bridal Shrug

This elegant little shrug is the perfect way to cover a bride's shoulders. It is filet crocheted in soft, silky bamboo thread following a chart for each of the five sizes.

Directions are for size Small. Changes for Medium, Large, X-Large and XX-Large are in parentheses

Shrug measures: 22 (24, 26, 28, 30)" (56 [61, 66, 71, 76] cm) wide x 16 (16¾, 17½, 18)" (40.5 [42.5, 43, 44.5, 45.5] cm) long before joining for sleeves

Special Abbreviations

extended double crochet (edc): Yarn over, insert hook in next st, yarn over, draw yarn through st, yarn over, draw yarn through 1 loop on hook, [yarn over, draw yarn through 2 loops on hook] twice.

popcorn: Work 5 dc in next st, drop loop from hook, insert hook in first dc of last 5 dc (on right side rows, insert hook from front to back; on wrong side rows, insert hook from back to front), draw dropped loop through st.

picot: Ch 3, slip st in last dc made.

crossed dc: Skip next st, dc in next st, working in front of last dc made, dc in last skipped st.

tr2tog: *Yarn over (twice), insert hook in next st, yarn over, draw up a loop, [yarn over, draw yarn through 2 loops on hook] twice, repeat from * once, yarn over, draw yarn through 3 loops on hook.

space: Ch 2, skip next 2 sts, edc in next edc.

block: Worked over block: Edc in next 2 edc, edc in next edc. Worked over space: 2 edc in next ch-2 space, edc in next edc. Worked over popcorn Edc in next 2 ch-1 spaces, edc in next edc.

Popcorn Block: Ch 1, 5-edc popcorn worked between next 2 edc, ch 1, edc in next edc.

Half Block A: Sc in first edc, hdc in next st, dc in next st, edc in next edc.

Half Block B: Dc in next st, hdc in next st, sc in next edc.

Special Stitch Patterns

Diamond Lacet

Row 1: Ch 3, skip 2 sts, slip st in next st, ch 3, skip next 2 sts, edc in next st.

Row 2: Ch 2, tr2tog over same edc and next edc (skipping 2 ch-3 spaces), ch 2.

Small Diamond

Row 1: Block (indicated by red dot), ch 5, skip 2 sts, edc in next edc, block (red dot).

Row 2: Block (red dot), ch 5, sc in next ch-5 loop, ch 5, skip next 3 edc, edc in next edc, block (red dot).

Row 3: 3 edc in ch-5 loop (red dot), ch 2, skip next sc, 3 edc in next ch-5 loop, edc in next edc (red dot).

Row 4: Block in ch-2 space at top of diamond (red dot).

Large Diamond

Row 1: Block (indicated by red dot), ch 5, skip next 2 sts, edc in next edc, block (red dot).

Row 2: Block (red dot), ch 5, sc in next ch-5 loop, ch 5, skip next 3 edc, edc in next 4 edc (red dot).

Row 3: Block (indicated by red dot), ch 7, sc in next sc, sc in next ch-5 loop, sc in next ch-5 loop, ch 7, edc in next 4 edc (red dot).

Row 4: Block (indicated by red dot), ch 9, sc in next ch-7 loop, sc in next 3 sc, sc in next ch-7 loop, ch 9, skip next 3 edc, edc in next 4 edc (red dot).

Row 5: 3 edc in ch-9 loop (red dot), ch 7, skip next sc, sc in next 3 sc, ch 7, 3 edc in next ch-9 loop, edc in next edc (red dot).

Row 6: 3 edc in ch-7 loop (red dot), ch 5, skip next sc, sc in next sc, 3 edc in next ch-7 loop, edc in next edc (red dot).

Row 7: 3 edc in ch-5 loop (red dot), ch 2, skip next sc, 3 edc in next ch-5 loop, edc in next edc (red dot).

Continued...

SHOP KIT

Row 8: Block in ch-2 space at top of diamond (red dot).

To Decrease: Slip st in next 3 edc of each block skipped on chart, work in pattern following chart across to last st indicated on chart, turn, leaving remaining sts un worked.

NOTE: Each size is worked by following a different chart.

SHRUG

Size Small Only

Starting at top edge of shrug, ch 138.

Row 1: Edc in 4th ch from hook, edc in next 8 ch (3 blocks made), [ch 2, skip next 2 ch, edc in next ch] 3 times (3 spaces made), ch 3, skip next 2 ch, slip st in next ch, ch 3, skip next 2 ch, edc in next ch (1 lacet Row 1 made), [ch 2, skip next 2 ch, edc in next ch] twice (2 spaces made), edc in next 3 ch (1 block made), ch 2, skip next 2 ch, edc in next ch (1 space made), [ch 3, skip next 2 ch, slip st in next ch, ch 3, skip next 2 ch, edc in next ch st] 2 times (2 lacets made), edc in next 39 ch (13 blocks made), [ch 3, skip next 2 ch, slip st in next ch, ch 3, skip next 2 ch, edc in next ch] twice (2 lacets made), ch 2, skip next 2 ch, edc in next ch (1 space made), edc in next 3 ch (1 block made), [ch 2, skip next 2 ch, edc in next ch] twice, ch 3, skip next 2 ch, slip st in next ch st, ch 3, skip next 2 ch, edc in next ch (1 lacet made), [ch 2, skip next 2 ch, edc in next ch] 3 times (3 spaces made), edc in next 9 ch (3 blocks made), turn—Row 1 of Size Small Chart complete.

Size Medium Only

Starting at top edge of shrug, ch 150.

Row 1: Edc in 4th ch from hook, edc in next 11 ch (4 blocks made), ch 2, skip next 2 ch,

edc in next 10 ch (1 space; 3 blocks made), ch 2, skip next 2 ch, edc in next ch (1 space made), ch 3, skip next 2 ch, slip st in next ch, ch 3, skip next 2 ch, edc in next 10 ch (1 lacet Row 1; 3 blocks made), ch 3, skip next 2 ch, slip st in next ch, ch 3, skip next 2 ch, edc in next ch (1 lacet made), ch 2, skip next 2 ch, edc in next 46 ch (1 space; 15 blocks made), ch 2, skip next 2 ch, edc in next edc (1 space made), ch 3, skip next 2 ch, slip st in next ch, ch 3, skip next 2 ch, edc in next 10 ch (1 lacet; 3 blocks made), ch 3, skip next 2 ch, slip st in next ch, ch 3, skip next 2 ch, edc in next ch (1 lacet made), ch 2, skip next 2 ch, edc in next 10 ch (1 space, 3 blocks made), ch 2, skip next 2 ch, edc in next 13 ch (1 space 4 blocks made), turn—Row 1 of Size Medium Chart complete.

Size Large Only

Starting at top edge of shrug, ch 162.

Row 1: Edc in 4th ch from hook, edc in next 11 ch (4 blocks made), ch 2, skip next 2 ch, edc in next 10 ch (1 space; 3 blocks made), *[ch 2, skip next 2 ch, edc in next ch] twice (2 spaces made), edc in next 9 ch (3 blocks made)*; repeat from * to * once, ch 2, skip next 2 ch, edc in next 46 ch (1 space; 15 blocks made), ch 2, skip next 2 ch, edc in next 10 ch (1 space, 3 blocks made), repeat from * to * twice ch 2, skip next 2 ch, edc in next 13 ch (1 space; 4 blocks made), turn—Row 1 of Size Large Chart complete.

Size X-Large Only

Starting at top edge of shrug, ch 174.

Row 1: Edc in 4th ch from hook, edc in next 11 ch (4 blocks made), ch 3, skip next 2 ch, slip st in next ch, ch 3, skip next 2 ch, edc in next ch (1 lacet Row 1 made), *[edc in next 6 ch, ch 2, skip next 2 ch, edc in next ch (2 block; 1 space made)] 3 times*, edc in next 6



ch (2 blocks made), [ch 2, skip next 2 ch, edc in next ch] twice (2 spaces made), edc in next 57 ch (19 blocks made), [ch 2, skip next 2 ch, edc in next ch] twice (2 spaces made); repeat from * to * once, edc in next 6 ch (2 blocks made), ch 3, skip next 2 ch, slip st in next ch, ch 3, skip next 2 ch, edc in next 13 ch (1 lacet; 4 blocks made), turn—Row 1 of Size X-Large Chart complete.

Size XX-Large Only

Starting at top edge of shrug, ch 186.

Row 1: Edc in 4th ch from hook, edc in next 11 ch (4 blocks made), ch 2, skip next 2 ch, edc in next 10 ch (1 space; 3 blocks made), ch 2, skip next 2 ch, edc in next ch (1 space made), ch 3, skip next 2 ch, slip st in next ch, ch 3, skip next 2 ch, edc in next 10 ch (1 lacet Row 1 made; 3 blocks), ch 3, skip next 2 ch, slip st in next ch, ch 3, skip next 2 ch, edc in

next ch (1 lacet made), ch 2, skip next 2 ch, edc in next 10 ch (1 space; 3 blocks made), ch 2, skip next 2 ch, edc in next 52 ch (1 space; 17 blocks made), ch 2, skip next 2 ch, edc in next 10 ch (1 space; 3 blocks made), ch 2, skip next 2 ch, edc in next 58 ch (1 space; 19 blocks made), ch 3, skip next 2 ch, slip st in next ch, ch 3, skip next 2 ch, edc in next 10 ch (1 lacet; 3 blocks made), ch 3, skip next 2 ch, slip st in next ch, ch 3, skip next 2 ch, edc in next ch (1 lacet made), ch 2, skip next 2 ch, edc in next 10 ch (1 space; 3 blocks made), ch 2, skip next 2 ch, edc in next 13 ch (1 space; 4 blocks made), turn—Row 1 of Size XX-Large Chart complete.

All Sizes

Rows 2-35 (37, 38, 39, 41): Ch 3 (counts as first edc) at beginning of each row, work in blocks, spaces, diamond lacets, popcorn

Continued...

blocks (making sure all popcorns “pop” to right side of work), small diamonds, large diamonds, half blocks, and decreasing as indicated. Fasten off.

Top Row A: With right side facing, working across opposite side of foundation ch, join yarn with a slip st in first ch at top right-hand corner of shrug, ch 3 (counts as edc), edc in next 51 (54, 57, 60, 66) ch, dc in next ch, hdc in next ch, sc in next ch. Fasten off.

Top Row B: Skip next 26 (32, 38, 44, 44) ch sts, join yarn in next ch, ch 1, sc in same ch, hdc in next ch, dc in next ch, edc in next 52 (55, 58, 61, 67) ch. Fasten off. Weave ends in. Block to measurements given.

Assembly

With right sides facing, hold the top edge and the lower corner of piece together. Using a tapestry needle sew across 2 blocks from the outside edge catching both the top and lower edge. Repeat on other end of shrug. Turn right side out.

Sleeve Edging

Round 1: With right side facing, join yarn in the seam on sleeve edge, ch 1, sc in same space, (dc, picot, dc) in next row-end st, *sc in next row-end st, (dc, picot, dc) in next row-end st; repeat from * around; join with a slip st in first sc.

Repeat Sleeve Edging around other sleeve edge.

Neck Edging

Round 1: Locate center block on neck edge at base of Row 1 of Shrug, with right side facing, join yarn in the ch at base of first edc of center block, ch 2 (counts as dc here and throughout), *dc in each st across to sleeve seam, 2 dc in sleeve seam; repeat from *

across lower edge of shrug, dc in each st across to beginning of round, ending with a slip st in the 2nd ch of beginning ch-2.

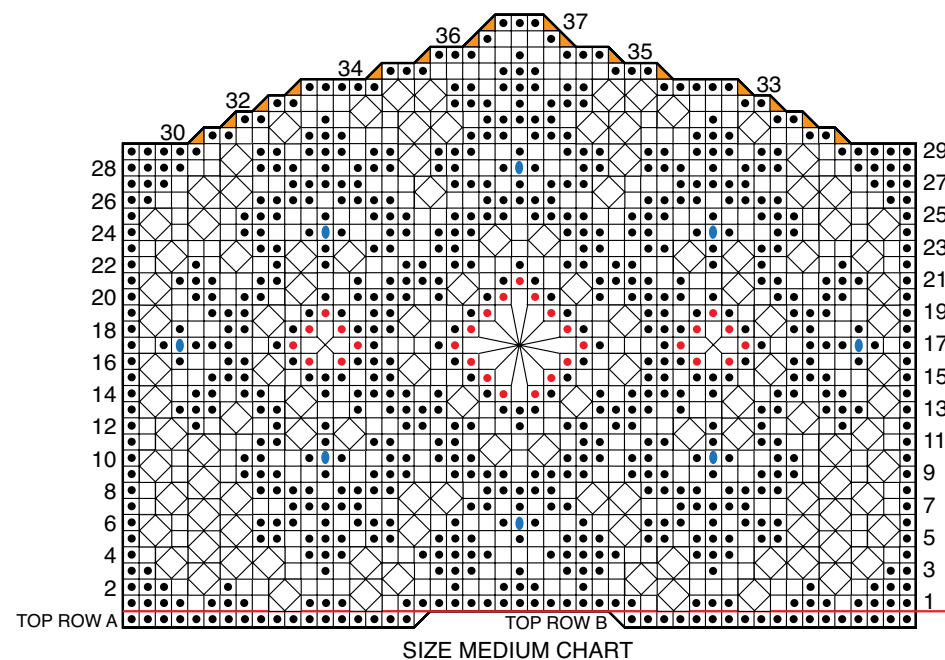
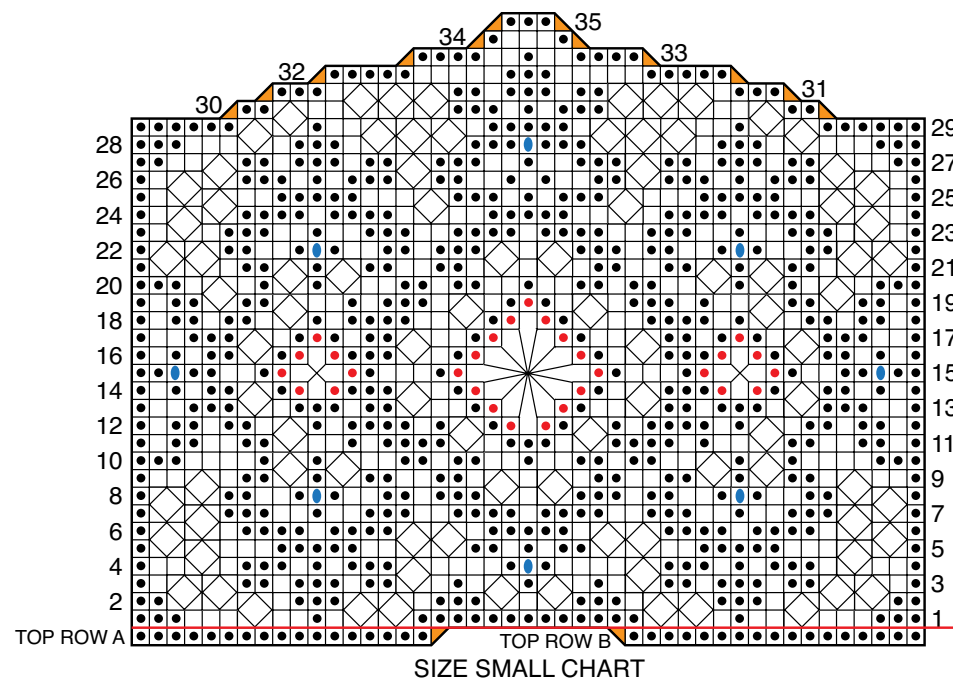
Round 2: Ch 2, *crossed dc in next 2 sts; repeat from * around; join with a slip st in 2nd ch of beginning ch-2.

Round 3: Ch 1, sc in same st, dc in next st, picot, dc in next st, *sc in next st, dc in next st, picot, dc in next st; repeat from * around; join a slip st in first sc. Fasten off. Weave ends in. Block again if needed.

ABBREVIATIONS

ch = chain; dc = double crochet; edc = extended double crochet; sc = single crochet; sl st = slip st; sp(s) space(es); st(s) = stitch(es); () = work directions in parentheses into same st; [] = work directions in brackets the number of times specified; * = repeat whatever follows the * as indicated.

See Charts for sizes Large, X-Large, XX-Large and Chart Key on next page.



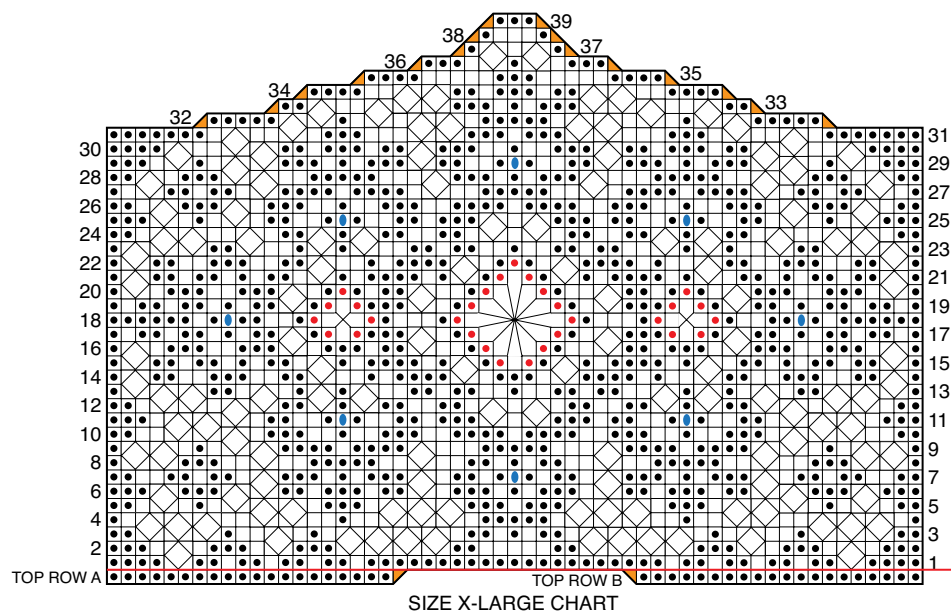
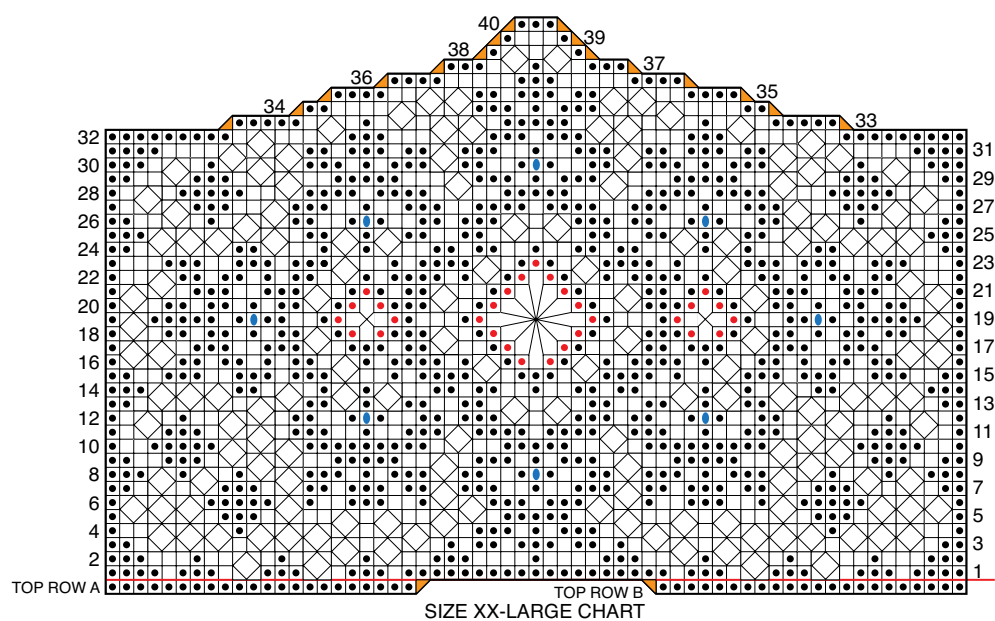
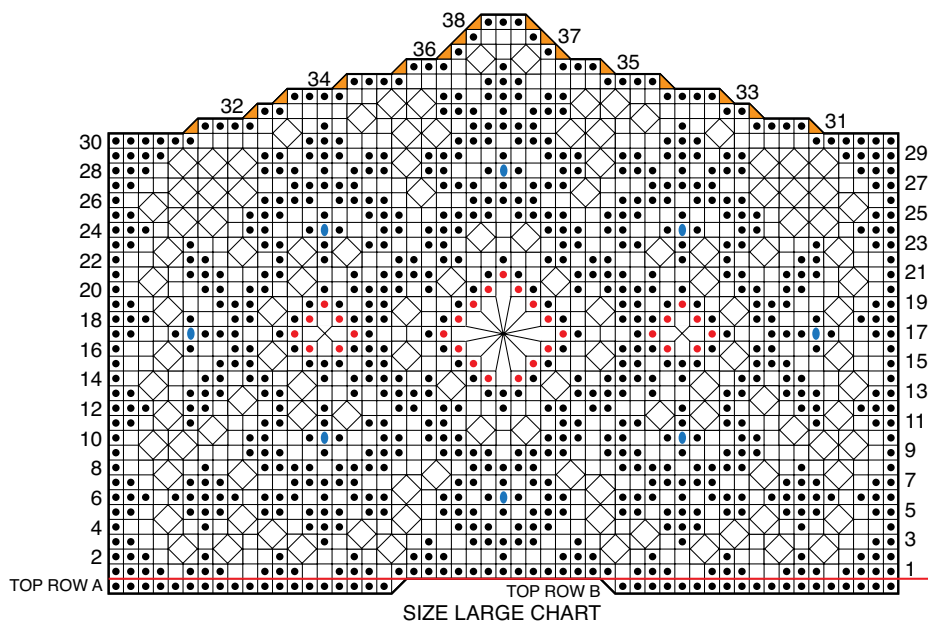
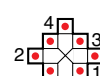


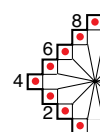
CHART KEY

- = **Space:** Ch 2, skip next 2 sts, edc in next st.
- = **Block:** Worked over block: Edc in next 2 edc, edc in next edc. Worked over space: 2 edc in next ch-2 space, edc in next edc. Worked over popcorn: Edc in next 2 ch-1 spaces, edc in next edc.
- = **Special Block:** 3 edc worked as described in adjacent Diamond keys.
- = **Popcorn Block:** Ch 1, 5-edc popcorn worked between next 2 edc, ch 1, edc in next edc.
- ▲ = **Half Block A:** Sc in first edc, hdc in next st, dc in next st, edc in next edc.
- ▲ = **Half Block B:** Dc in next st, hdc in next st, sc in next edc.
- 2 □ 1 = **Diamond Lacet**
Row 1: Ch 3, skip 2 sts, slip st in next st, ch 3, skip next 2 sts, edc in next st.
Row 2: Ch 2, tr2tog over same edc and next edc (skipping 2 ch-3 spaces), ch 2, edc in next st.



Small Diamond

- Row 1:** Block (indicated by red dot), ch 5, skip 2 sts, edc in next edc, block (red dot).
- Row 2:** Block (red dot), ch 5, sc in next ch-5 loop, ch 5, skip next 3 edc, edc in next edc, block (red dot).
- Row 3:** 3 edc in ch-5 loop (red dot), ch 2, skip next sc, 3 edc in next ch-5 loop, edc in next edc (red dot).
- Row 4:** Block in ch-2 space at top of diamond (red dot).



Large Diamond

- Row 1:** Block (indicated by red dot), ch 5, skip next 2 sts, edc in next edc, block (red dot).
- Row 2:** Block (red dot), ch 5, sc in next ch-5 loop, ch 5, skip next 3 edc, edc in next 4 edc (red dot).
- Row 3:** Block (indicated by red dot), ch 7, sc in next ch-5 loop, sc in next sc, sc in next ch-5 loop, ch 5, ch 7, edc in next 4 edc (red dot).
- Row 4:** Block (indicated by red dot), ch 9, sc in next ch-7 loop, sc in next 3 sc, sc in next ch-7 loop, ch 9, skip next 3 edc, edc in next 4 edc (red dot).
- Row 5:** 3 edc in ch-9 loop (red dot), ch 7, skip next sc, sc in next 3 sc, ch 7, 3 edc in next ch-9 loop, edc in next edc (red dot).
- Row 6:** 3 edc in ch-7 loop (red dot), ch 5, skip next sc, sc in next sc, 3 edc in next ch-7 loop, edc in next edc (red dot).
- Row 7:** 3 edc in ch-5 loop (red dot), ch 2, skip next sc, 3 edc in next ch-5 loop, edc in next edc (red dot).
- Row 8:** Block in ch-2 space at top of diamond (red dot).