



CROCHET | SKILL LEVEL: **EASY**

ABBREVIATIONS

Alt = Alternate(ing)

Approx = Approximately

Beg = Beginning

Dc = Double crochet

Dc-3rd (double crochet in 3rd loop) = Yoh and draw up a loop in 3rd loop of indicated (Yoh and draw through 2 loops on hook) twice. Note: When working in rnds with RS facing, 3rd loop is at back of work, right below back loop.

Dcftp = Yoh and draw up a loop around post of next st at front of work inserting hook from right to left. (Yoh and draw through 2 loops on hook) twice - 1 dcftp made

Rep = Repeat

Rnd(s) = Round(s)

RS = Right side

Sc = Single crochet

Sc2tog = Draw up a loop in each of next 2 sc. Yoh and draw through all 3 loops on hook

Sl st = Slip stitch

Sp(s) = Space(s)

St(s) = Stitch(es)

Tog = Together

WS = Wrong side

Yoh = Yarn over hook

MEASUREMENTS

Approx 10" [25.5 cm] wide x 2½" [6 cm] deep x 9" [23 cm] tall, excluding strap.

GAUGE

One Square = 4¾" [12 cm] square.

INSTRUCTIONS

Notes:

- Bag is made from 13 pieces: 9 squares, 2 triangles, and 2 Base/Sside/Strap pieces.
- Squares are worked in joined rnds. Triangles are worked back and forth in rows.
- Pieces are crocheted tog, using Welled Slip Stitch, following assembly diagrams.

MATERIALS

Aunt Lydia's® Fashion 3 (150 yds/147 m)

Soft Mauve (1040)

4 balls

Size U.S. D/3 (3.25 mm) crochet hook **or size needed to obtain gauge.** Yarn needle. Optional (for lining): Sewing machine, hand sewing needle and thread, iron, sewing pines, ½ yd [0.5m] lining fabric, 9 x 12" (23 x 30.5 cm) sheet of craft foam.

- An optional fabric lining is sewn and inserted into finished bag, following liner diagrams.
- Stitch "2 rows below" is a stitch in row numbered 2 less than the row currently being worked. For example, when working Row 3, stitch "2 rows below" is in Row 3 - 2 = Row 1.
- Ch 3 at beg of rnds counts as dc.
- To Join all rnds with sl st to top of ch-3.

SQUARE (make 9)

See chart on page 5.

Make an adjustable ring: Wrap yarn into a ring, ensuring that tail falls behind working yarn. Grip ring and tail between middle finger and thumb. Insert hook through center of ring, Yoh (with working yarn) and draw up a loop. Work sts of 1st rnd in ring. After 1st rnd of sts is worked, pull tail gently to tighten ring.

1st rnd: Ch 3. 15 dc in ring. Join. 16 dc. Pull gently tail of ring to close opening at center.

2nd rnd: Ch 3. 2 dc in same sp as sl st. *Ch 2. Skip next dc. 1 dc in next dc. Ch 2. Skip next dc. 3 dc in next dc (corner made). Rep from *

to last 3 dc. Ch 2. Skip next dc. 1 dc in next dc. Ch 2. Skip last dc. Join. 16 dc and 8 ch-2 sps.

3rd rnd: Ch 3. 5 dc in next dc. 1 dc in next dc. *Ch 2. Skip next ch-2 sp. 1 dc in next dc. Ch 2. Skip next ch-2 sp. 1 dc in next dc. 5 dc in next dc (corner). 1 dc in next dc. Rep from * to last 2 ch-2 sps. Ch 2. Skip next ch-2 sp. 1 dc in next dc. Ch 2. Skip last ch-2 sp. Join. (four 7-dc groups and 4 separate dc) and 8 ch-2 sps.

4th rnd: Ch 3. 1 dc in next 2 dc. 5 dc in next dc. 1 dc in each of next 3 dc. *Ch 2. Skip next ch-2 sp. 1 dc in next dc. Ch 2. Skip next ch-2 sp. 1 dc in each of next 3 dc. 5 dc in next dc (corner). 1 dc in each of next 3 dc. Rep from * to last 2 ch-2 sps. Ch 2. Skip next ch-2 sp. 1 dc in next dc. Ch 2. Skip last ch-2 sp. Join. 48 dc (four 11-dc groups and 4 separate dc) and 8 ch-2 sps.

5th rnd: Ch 3. 1 dc in each of next 4 dc. 5 dc in next dc. 1 dc in each of next 5 dc. *2 dc in next ch-2 sp. 1 dc in next dc. 2 dc in next ch-2 sp. 1 dc in each of next 5 dc. 5 dc in next dc (corner). 1 dc in each of next 5 dc. Rep from * to last 2 ch-2 sps. 2 dc in next ch-2 sp. 1 dc in next dc. 2 dc in last ch-2 sp. Join. 80 dc.

Draw loop on hook to back side of piece, as follows: remove loop from hook, insert hook from back to front under top 2 loops of same st as joining sl st, place dropped loop back on hook and draw through to the back side.

6th and 7th rnds: Ch 3. *1 dc-3rd in each st to center st of next 5-dc corner group. 5 dc-3rd in corner st. Rep from * 3 times more. 1 dc-3rd in each st to end of rnd. Join. 112 dc at end of 7th rnd. Fasten off.

TRIANGLE (make 2)

See chart on page 5.

Ch 4.

1st row: (RS). 1 sc in 2nd ch from hook and each ch to end of chain. 3 sc. Turn.

2nd row: Ch 1. 1 sc in each of next 2 sc. 2 sc in last sc. 4 sc. Turn.

3rd row: Ch 1. 1 sc in each of first 2 sc. 1 dcfp around next sc 2 rows below (around center st of 1st row). 2 sc in last sc. 5 sts. Turn.

4th row: Ch 1. 1 sc in each of first 4 sts. 2 sc in last sc. 6 sc. Turn.

5th row: Ch 1. 1 sc each of first 3 sc. 1 dcfp around next dcfp 2 rows below. 1 sc in next sc. 2 sc in last sc. 7 sts. Turn.

6th and alt rows: Ch 1. 1 sc in each st to last st. 2 sc in last st. 8 sc. Turn.

7th row: Ch 1. 1 sc in each of first 4 sc. 1 dcfp around next dcfp 2 rows below. 1 sc in each of next 2 sc. 2 sc in last sc. 9 sts. Turn.

9th row: Ch 1. 1 sc in each of first 2 sc. 1 dcfp around next sc 2 rows below (around 2nd st of 7th row). 1 sc in each of next 2 sc. 1 dcfp around next dcfp 2 rows below. 1 sc in each of next 2 sc. 1 dcfp around next sc 2 rows below (around 2nd to last st of 7th row). 2 sc in last sc. 11 sts. Turn.

11th row: Ch 1. 1 sc in each of first 3 sc. 1 dcfp around next dcfp 2 rows below. (1 sc in each of next 2 sc. 1 dcfp around next dcfp 2 rows below) twice. 1 sc in next sc. 2 sc in last sc. 13 sts. Turn.

13th row: Ch 1. 1 sc in each of first 4 sc. 1 dcfp around next dcfp 2 rows below. *1 sc in each of next 2 sc. 1 dcfp around next dcfp 2 rows below. Rep from * to last 3 sc. 1 sc in each of next 2 sc. 2 sc in last sc. 15 sts. Turn.

15th row: Ch 1. 1 sc in each of first 2 sc. 1 dcfp around next sc 2 rows below. *1 sc in each of next 2 sc. 1 dcfp around next dcfp 2 rows below. Rep from * to last 4 sc. 1 sc in each of next 2 sc. 1 dcfp around next sc 2 rows below. 2 sc in last sc. 17 sts. Turn.

17th row: Ch 1. 1 sc in each of first 3 sc. 1 dcfp around next st 2 rows below. *1 sc in each of next 2 sc. 1 dcfp around next st 2 rows below. Rep from * to last 2 sc. 1 sc in next sc. 2 sc in last sc. 19 sts. Turn.

18th to 23rd rows: As 12th to 17th rows. 25 sts at end of last row. Fasten off.

BASE/SIDE/STRAP (make 2)

Beg at center of base, ch 12.

1st row: (RS). 1 sc in 2nd ch from hook and each ch to end of chain. 11 sc. Turn.

2nd row: Ch 1. 1 sc in each sc to end of row. Turn.

3rd row: Ch 1. (1 sc in each of next 2 sc. 1 dcfp around next st 2 rows below) 3 times. 1 sc in each of last 2 sc. Turn.

Rep 2nd and 3rd rows until work from beg measures length to fit along one half of lower edge (for base) and one side edge of bag 14½" [37 cm]. **Do not** fasten off.

Strap

1st row: (WS). Ch 1. 1 sc in each of first 3 sts. Sc2tog. 1 sc in next st. Sc2tog. 1 sc in last 3 sts. 9 sc. Turn.

2nd row: Ch 1. 1 sc in each of first 2 sts. 1 dcfp around next st 2 rows below. (1 sc in next st. 1 dcfp around next st 2 rows below) twice. 1 sc in each of last 2 sts. Turn.

3rd row: Ch 1. 1 sc in each st to end of row. Turn.

4th row: Ch 1. 1 sc in each of first 2 sts. 1 dcfp around next dcfp 2 rows below. (1 sc in next st. 1 dcfp around next dcfp 2 rows below) twice. 1 sc in each of last 2 sts. Turn.

5th row: Ch 1. 1 sc in each of first 4 sts. Sc2tog. 1 sc in each of last 3 sts. 8 sts. Turn.

6th row: Ch 1. 1 sc in each of first 3 sts. 1 dcfp around first dcfp 2 rows below. 1 sc in next st. Skip center dcfp 2 rows below. 1 dcfp around last dcfp 2 rows below. 1 sc in each of last 2 sts. Turn.

7th and alt rows: Ch 1. 1 sc in each st to end of row. Turn.

8th row: Ch 1. 1 sc in each of first 3 sts. 1 dcfp around next 2 dcfp 2 rows below. 1 sc in each of last 3 sts. Turn.

10th row: Ch 1. 1 sc in each of first 3 sts. Skip first dcfp 2 rows below. 1 dcfp around 2nd dcfp 2 rows below. Working in front of dcfp just made, 1 dcfp around first (skipped) dcfp 2 rows below. 1 sc in each of last 3 sts. Turn.

12th row: Ch 1. 1 sc in each of first 2 sts. 1 dcfp around next dcfp 2 rows below. 1 sc in each of next 2 sts) twice. Turn.

Rep 7th and 12th rows until Strap measures 20" [51 cm], ending on a WS row.

Fasten off, leaving a long end for sewing.

FINISHING

Assembly

Welted Slip Stitch: With WS of pieces tog, matching sts and rows and working through both thicknesses, work sl st to join pieces tog. Refer to assembly diagrams for placement as follows:

1. Join 8 squares into 4 pairs of 2 squares each.
2. Join pairs into 2 larger squares of 4 squares each for Front and Back.
3. Join a triangle to each side of rem square for Flap.
4. Join Flap to one edge of one of the larger squares.
5. Sew base (wide) ends of Base/Side/Strap pieces tog, taking care that cabled side of both straps face the same side.
6. Carefully place Base/Side/Strap around front, placing center seam at center of lower edge of Front. Join one side of Base/Side/Strap to edges of base and sides of Front, leaving sides of strap free.
7. Join opposite side of Base/Side/Strap to edges of base and sides of Back.
8. Taking care not to twist strap, sew edges of strap tog (**do not** use Welted Slip Stitch to join ends of strap).

Fringe: Cut strands of yarn 13" [33 cm] long. Taking 2 strands together (tog), fold in half and knot into fringe across front edges of flap. Trim fringe evenly.

Lining (optional)

Cut 2 pieces of fabric, 21" x 10" [53.5 x 25.5 cm] for Front, Base, and Sides.

Cut 4 pieces of fabric, 9½" x 3" [24 x 7.5 cm] for Sides.

Cut 3 pieces of foam, 9" x 2" [23 x 5 cm] for strengthening Base and Sides.

Make 2 identical fabric bags, as follows:

Note: Refer to liner diagrams to make and insert liner.

Fold one large piece of fabric in half, for center of base of bag. Fold piece again, 1" [2.5 cm] from one side of center fold, and iron. Rep on other side. Pin one smaller piece of fabric along edges of folded larger piece. Using a ½" [13 mm] seam allowance sew piece in place for side of bag. Rep for other side of bag.

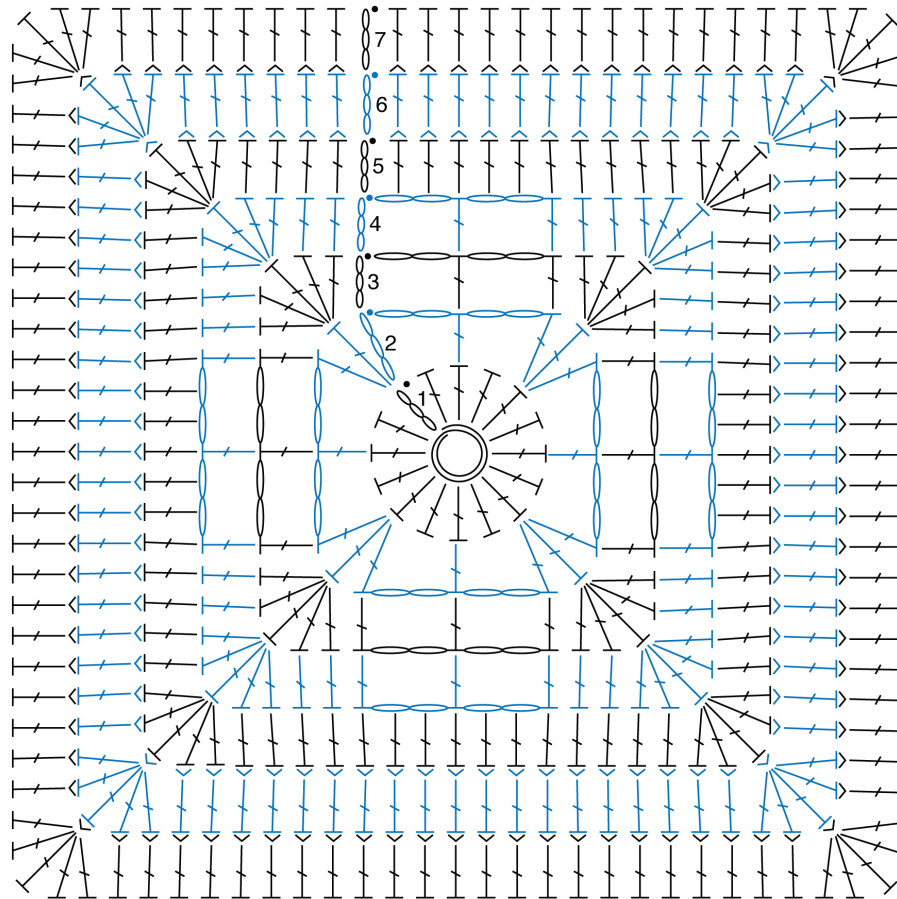
Rep to make second fabric bag.

Sew foam pieces to sides and bottom of one fabric bag. Place the foam on WS, inside the seam allowance and topstitch ⅜" [3 mm] through seam allowance and foam.

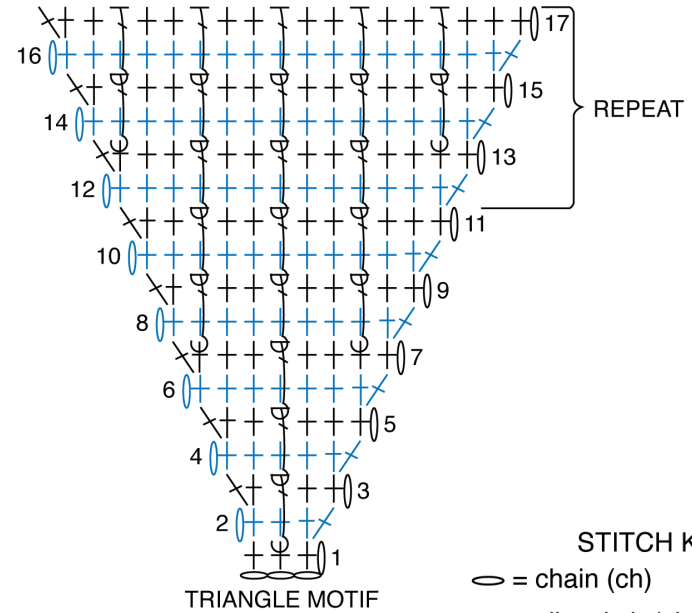
Turn fabric bag without foam strengthener inside out and place it inside the foam strengthened fabric bag.

Turn ½" [13 mm] down at top of each bag. Place doubled bag inside Crochet Bag and sew slip sts through both layers of lining bag and top edge of Crochet Bag to join.





SQUARE

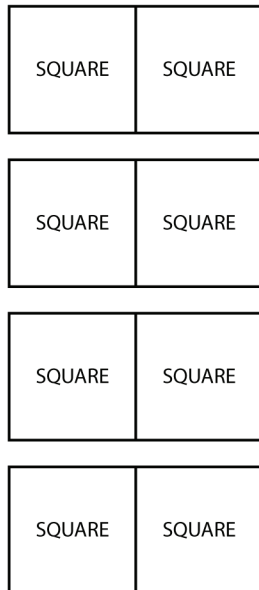


TRIANGLE MOTIF

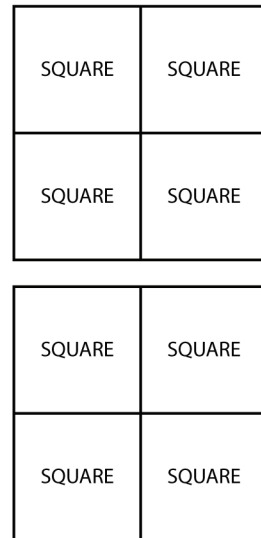
STITCH KEY

- = chain (ch)
- = slip stitch (sl st)
- † = single crochet (sc)
- ⌣ = double crochet (dc)
- ⌣ = front post dc (dcfp)
- ⌣ = double crochet in 3rd loop (dc-3rd)

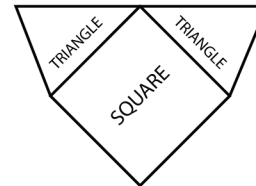
Step #1



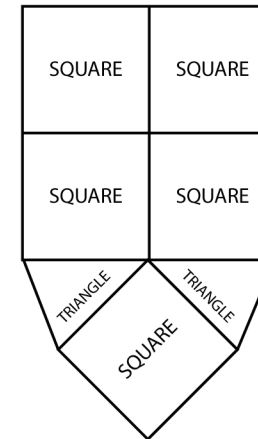
Step #2



Step #3



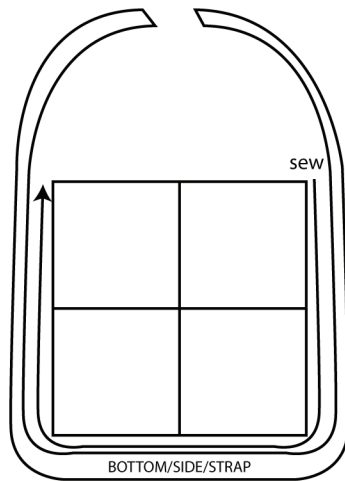
Step #4



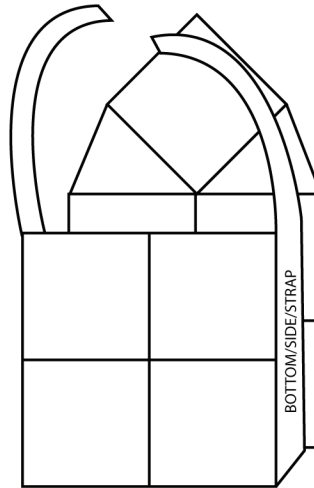
Step #5



Step #6



Step #7



Step #8

