



Designed by Cristina Mershon

What you will need:

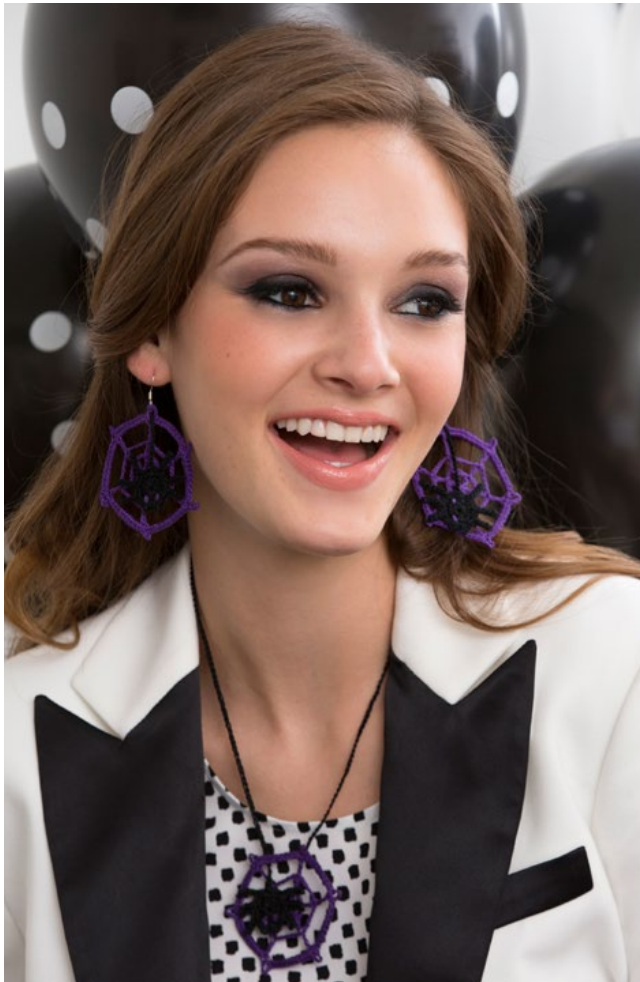
AUNT LYDIA'S® Classic Crochet Thread, Size 10: 1 ball each in 458 Purple A and 12 Black B

Susan Bates® Steel Crochet Hook: 1.5mm [US 7]

Yarn needle, 2 ear wire hooks, white glue, corrugated cardboard or blocking board, straight pins

GAUGE: Gauge is not critical for this project.

AUNT LYDIA'S® Classic Crochet Thread, Size 10, Art. 154 available in white & ecru 400 yd; solid color 250 yd; shaded color 300 yd balls



Spooky Spider Jewelry

Creepy crocheted black spiders on delicate webs are perfect accessories for the Halloween season and to accent a party outfit. These elegant jewelry pieces won't take long to make with black and purple crochet thread.

SHOP KIT

SPECIAL TECHNIQUE

Adjustable loop ring: Holding the thread a few inches [cms] from the end, wrap around your finger. Do not remove wrap from finger, insert hook into the wrap and draw up a loop of working thread. Chain one to secure the loop and remove ring from finger. Work stitches of first round in the ring. Pull gently, but firmly, on tail to tighten ring

EARRINGS & NECKLACE

WEB (Make 3; 1 for each Earring and 1 for Necklace)

With **A**, make an adjustable loop ring.

Round 1: Ch 6 (counts as dc and ch 3), [dc in ring, ch 3] 5 times, slip st in 3rd ch of beginning ch – 6 dc and ch-3 spaces. Tighten beginning loop.

Round 2: Ch 8 (counts as dc and ch 5), [dc in next dc, ch 5] 5 times, slip st in 3rd ch of beginning ch.

Round 3: Ch 12 (counts as dc and ch 9), [dc in next dc, ch 9] 5 times, slip st in 3rd ch of beginning ch.

Round 4: Ch 1, [10 sc in ch-9 space, sc in dc, ch 3, sc in same dc] 6 times, slip st in first ch. Fasten off.

SPIDERS (Make 3; 1 for each Earring and 1 for Necklace)

With **B**, make an adjustable loop ring.

Round 1: Ch 2, work 20 hdc in ring, slip st in top of beginning ch. Tighten beginning loop.

Round 2: Ch 1, sc in next 3 hdc, ch 6, slip st in second ch from hook and in next 4 ch, sc in same hdc (first spider leg), sc in next 2 hdc, ch 5, slip st in second ch from hook and in next 3 ch, sc in same hdc (second spider leg), sc in next 2 hdc, ch 4, slip st in second ch from hook and in next 2 ch, sc in same hdc (third

spider leg), sc in next 3 hdc, ch 2, sc in same hdc, sc in next 2 hdc, ch 2, sc in next 3 hdc (spider mouth), ch 4, slip st in second ch from hook and in next 2 ch, sc in same hdc (fourth spider leg), sc in next 2 hdc, ch 5, slip st in second ch from hook and in next 3 ch, sc in same hdc (fifth spider leg), sc in next 2 hdc, ch 6, slip st in second ch from hook and in next 4 ch, sc in same hdc (sixth spider leg), sc in last hdc, slip st in beginning ch, ch 12 for Earrings or 250 ch for Necklace.

Fasten off. Cut thread leaving a long tail for attaching.

Using photo as a guide and with **A**, embroider eyes on each Spider.

FINISHING

Weave in ends.

Mix equal amounts of white glue and water. Saturate Webs and Spiders with glue mixture, leaving last 12 (250) ch of Spider without glue. Shape and pin out Web and Spider on blocking board and allow to dry. Sew long tail from Spider ch to one point of Web, allowing to hang freely.

Earrings

Attach ear wire hooks to top edge.

Necklace

Thread long ch of Spider through one spoke of Web to secure Spider to Web and make neck piece.

Secure opposite end to beginning of long ch.

Continued...

Abbreviations

A, B, C = Color A, B, C; **ch** = chain; **cm** = centimeters; **dc** = double crochet; **hdc** = half double crochet; **mm** = millimeters; **sc** = single crochet; **st(s)** = stitch(es); **[]** = work directions in brackets the number of times specified; *** or **** = repeat whatever follows the * or ** as indicated.

