

MZ08 HAND SHOWER

meir®



FEATURES

- Refer to the Meir website for warranty terms & conditions, and available finishes.
- Flow rate **8L p/m** at 3 bar pressure.
- Solid brass construction. ABS hand shower.
- Box Weight **1.06 kg**
- 68mm long 1/2" threaded adapter included for non-AU regions only

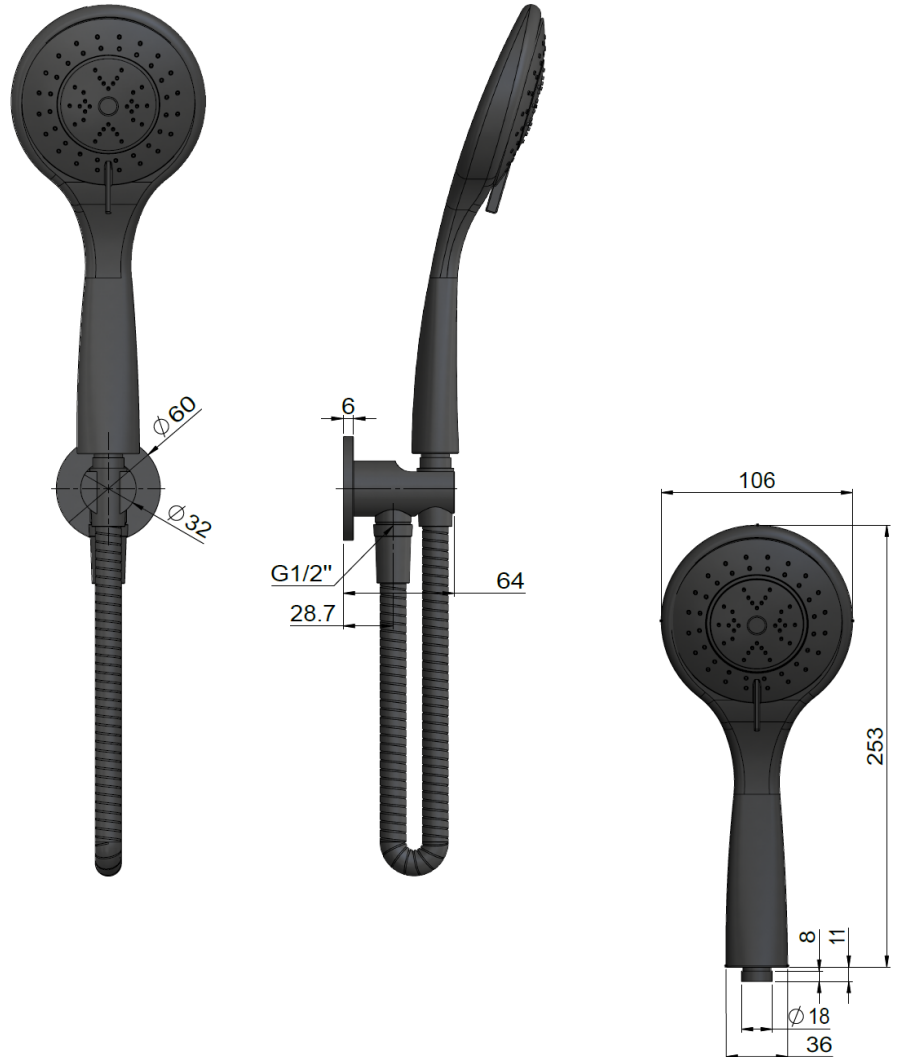
CARE

- Do not install tapware using any form of acetone silicones.
- Do not apply physical items (such as tools) directly to product.
- Never use house-hold or commercial detergents, citrus based cleaners, or abrasive cleaners.
- Clean using a mild washing soap solution rinsed, and dry with a soft cloth.
- Check for any product defects before installation.
- Refer to the installation manual for correct installation.

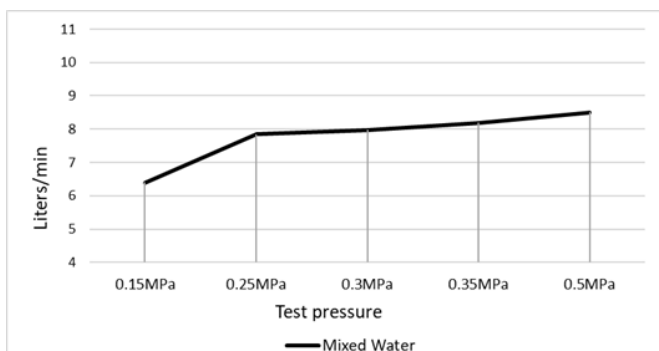
CREDENTIALS

- Watermark AS/NZS3718WMKA25013
- 3-star WELS rated
- 9 litres p/minute
- WELS registration No: S16196

SPECIFICATIONS

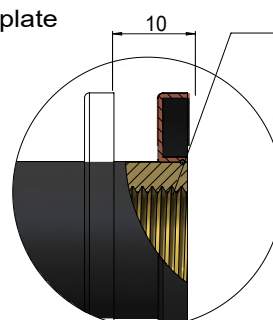


FLOW RATE GRAPH



TOLERANCES

Max back-plate tolerance



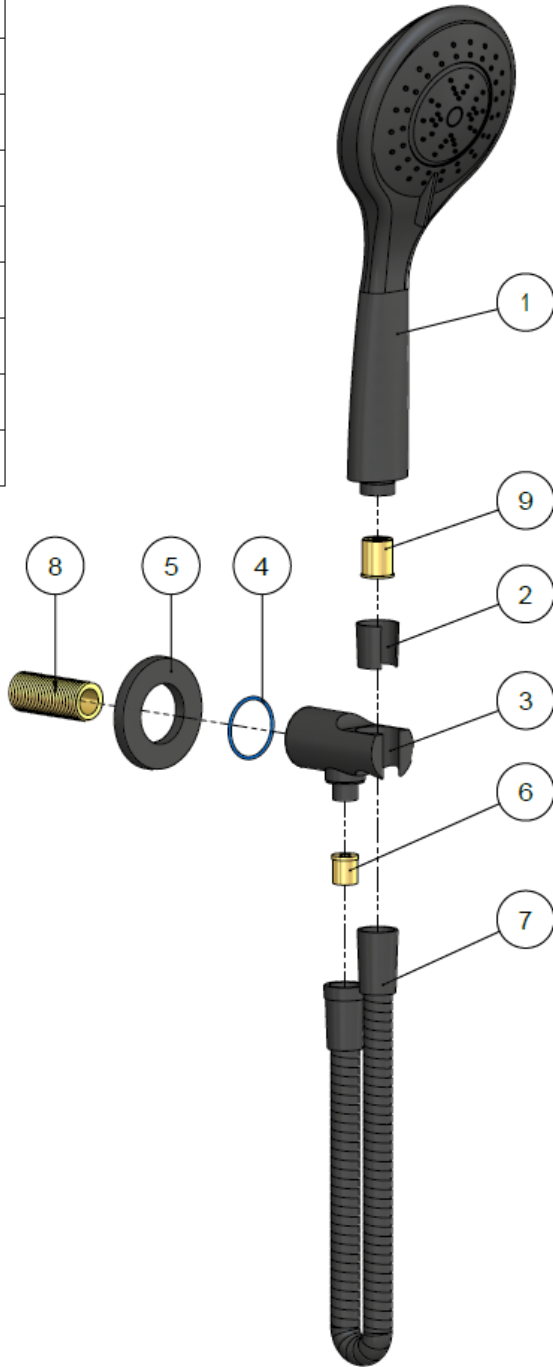
1/2" BSP female thread water inlet

MZ08 HAND SHOWER

meir®

EXPLODED VIEW

| No. | Part Name | Qty |
|-----|-------------------|-----|
| 1 | Hand Shower | 1 |
| 2 | Protective Sleeve | 1 |
| 3 | Bracket Base | 1 |
| 4 | O-ring | 1 |
| 5 | Back Plate | 1 |
| 6 | Flow Controller | 1 |
| 7 | Shower Hose | 1 |
| 8 | Threaded Adapter | 1 |
| 9 | Check Valve | 1 |



NOTE: The hose end caps of parts (hose part 7) are made from a special hardened plastic to prevent the brass mount (3) from scratching.