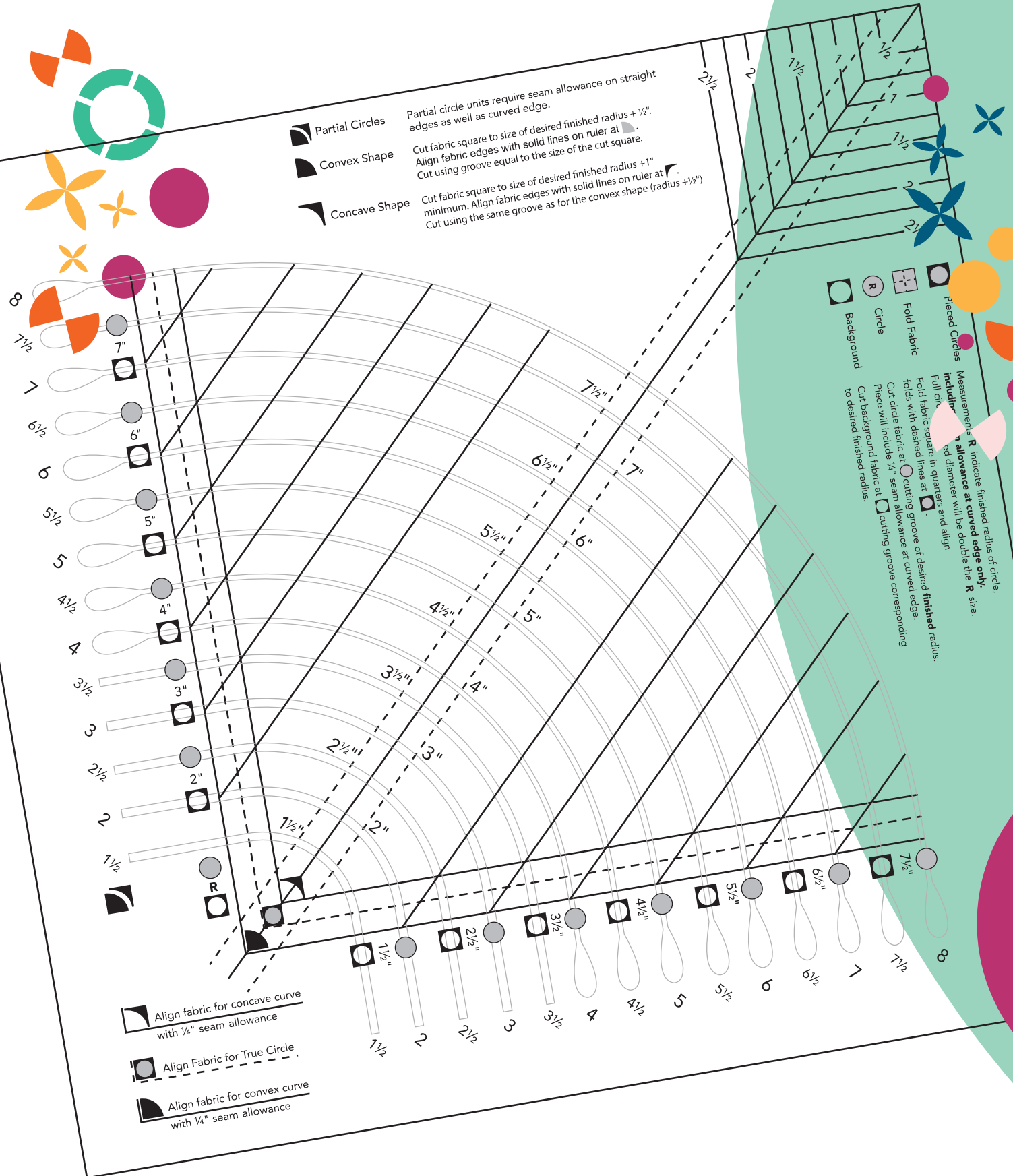


Classic Curves ruler

- Curved Piecing is Quick & Easy
- No templates to copy and cut out
- Non-slip surface
- Trace for appliqué
- Rotary cut for piecing

- Partial Circles: Partial circle units require seam allowance on straight edges as well as curved edge.
- Convex Shape: Cut fabric square to size of desired finished radius + 1/2". Align fabric edges with solid lines on ruler at . Cut using groove equal to the size of the cut square.
- Concave Shape: Cut fabric square to size of desired finished radius + 1" minimum. Align fabric edges with solid lines on ruler at . Cut using the same groove as for the convex shape (radius + 1/2").



Quarter Circles
Rings & Arcs
Orange Peel
Half Circle
Full Circle
1 1/2" - 8"

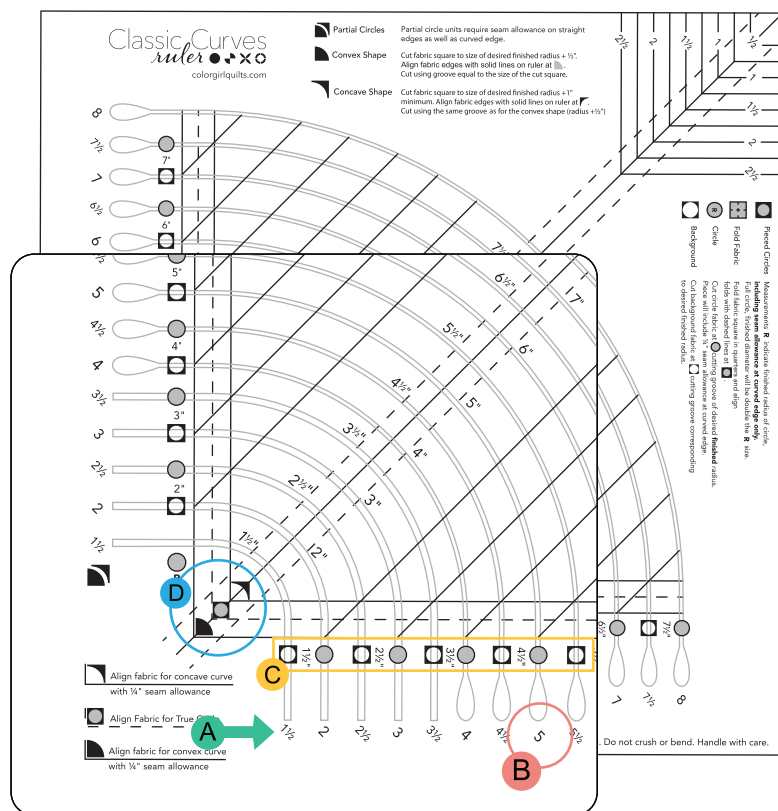
- Background
 - Circle
 - Fold Fabric
 - Pieced Circles
- Measurements **R** indicate finished radius of circle, including seam allowance at curved edge only. Full diameter will be double the **R** size.
- Fold fabric square in quarters and align full circle.
- Fold fabric square in quarters and align folds with dashed lines at .
- Cut circle fabric at cutting groove of desired radius. Piece will include 1/4" seam allowance at curved edge.
- Cut background fabric at cutting groove corresponding to desired finished radius.

- Align fabric for concave curve with 1/4" seam allowance
- Align Fabric for True Circle
- Align fabric for convex curve with 1/4" seam allowance





made in Taiwan




The Basics



A Cutting Grooves on the ruler are labelled with the measurement of the *unfinished* radius of the curve. Cut shapes using the measurement **1/2" larger** than the intended finished size of unit.

B For all shapes except full circles, cut concave and convex shapes using the *same* cutting groove. For example, a quarter circle that will finish 4 1/2", cut **both**  and  using the cutting groove marked 5".

C "R" measurements indicate the *finished radius* of a full circle. To cut the pieces for full circles,

- find the desired finished radius measurement *whole inch numbers are up one side of ruler, 1/2" numbers are along the other edge*
- Align fabric with dashed lines marked 
- use the adjacent cutting groove marked with  to cut the *concave* curve (the 'hole' to place the circle within).
- use the adjacent cutting groove marked  to cut the *convex* curve (the 'circle' that will be set into the hole).

D It is essential to cut the curved edge of the fabric to the correct length for successful sewing. Find the desired shape icon on the ruler --concave, convex, or whole circle-- and follow the lines on the ruler to where that line meets the cutting groove for the desired size. Ensure that the edges of the fabric are aligned at this point under the ruler at *both ends* of the cutting groove. See illustrations for sample cuts.

Good to Know

Convex Curve



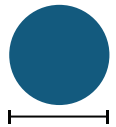
Concave Curve



Radius



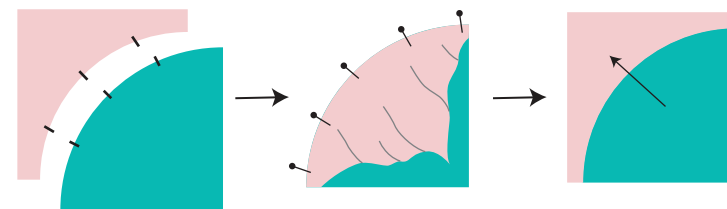
Diameter



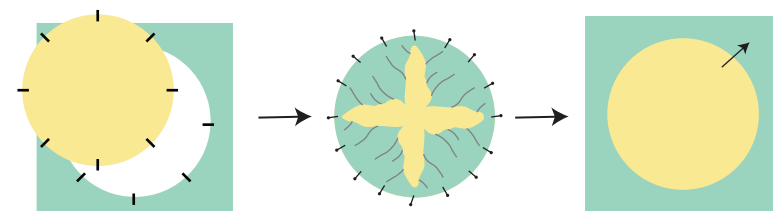
Watch video demonstrations on Color Girl YouTube to learn how to cut shapes, curved piecing techniques, block trimming, and projects. Patterns available at ColorGirlQuilts.com

- For curves 4" and larger, use standard rotary cutter to cut shapes for piecing or applique or to make templates for tracing quilt designs.
- For curves 3 1/2" and smaller, use wider grooves to trace curved shapes with pencil or fabric pen to make hand-piecing templates or mark quilting designs & rounded corners.
- Use care to avoid damaging ruler with sharp cutting tools.

Piecing technique is the same for all curved shapes: match edges, use pins as desired and sew carefully. Avoid pulling or distorting fabrics.



1. Cut fabrics according to individual pattern instructions.
2. Fold pieces to mark the center of the curve on both pieces. Fold ends of the curve to center to mark points half-way to center.
3. Turn fabrics right sides facing and pin at marked points as well as the ends of the curve.
4. Sew curves the same as straight seams: keep fabric edges aligned and use 1/4" seam allowance.
5. Press carefully to avoid distorting fabrics.
6. Trim and square as directed in individual pattern.

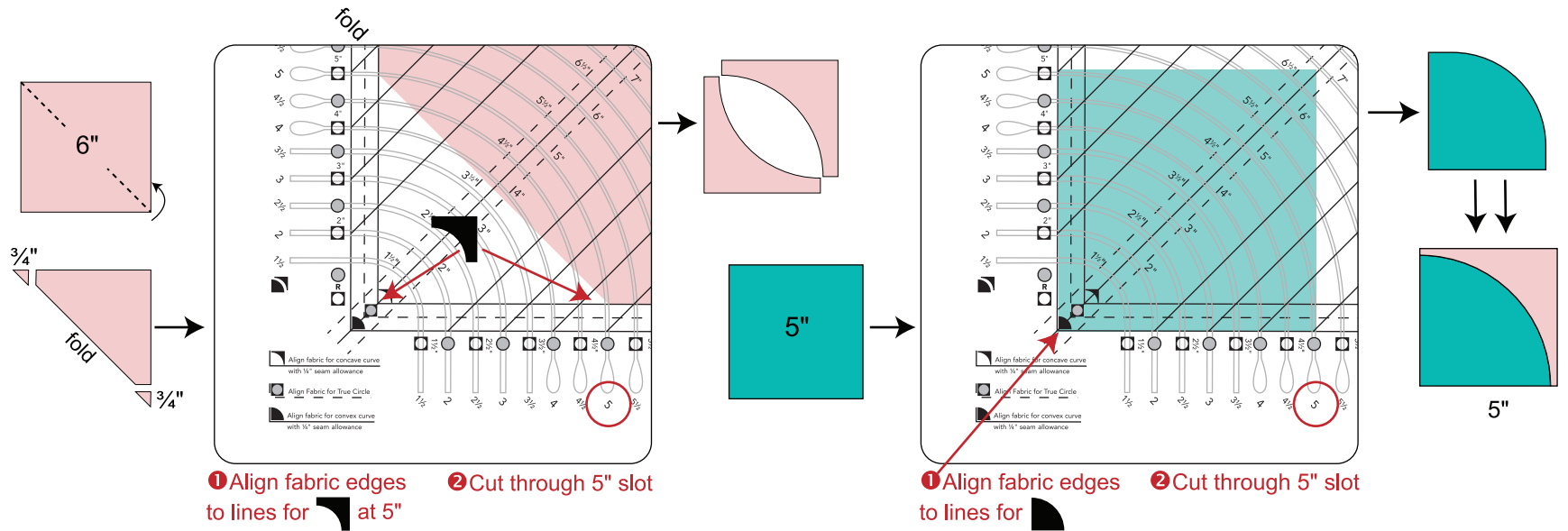


Use caution with sharp cutting tools and use self healing mat to protect work surface. Keep sharp cutting tools ruler and packaging away from children. Read all instructions prior to use. Handle with care, avoid crushing or bending ruler.

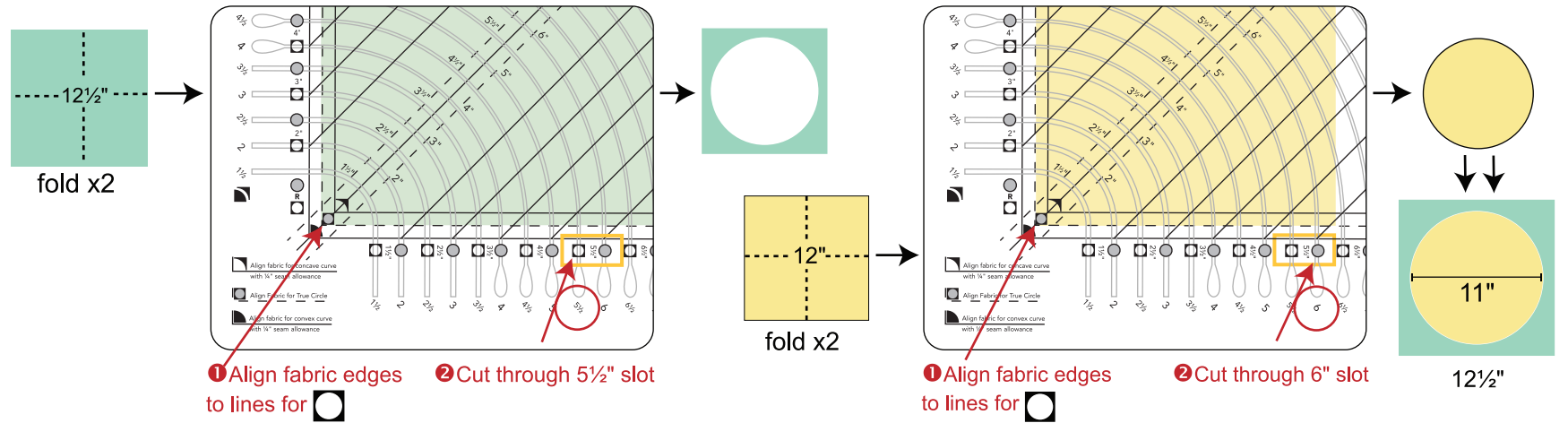


Cutting the Shapes

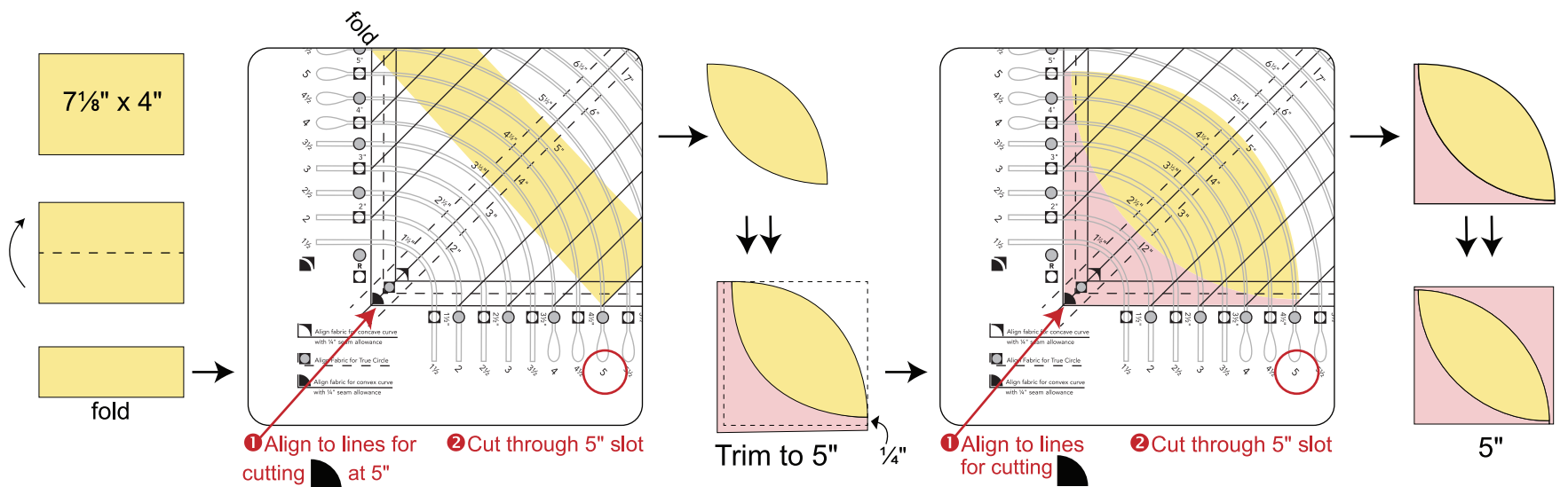
Quarter Circle



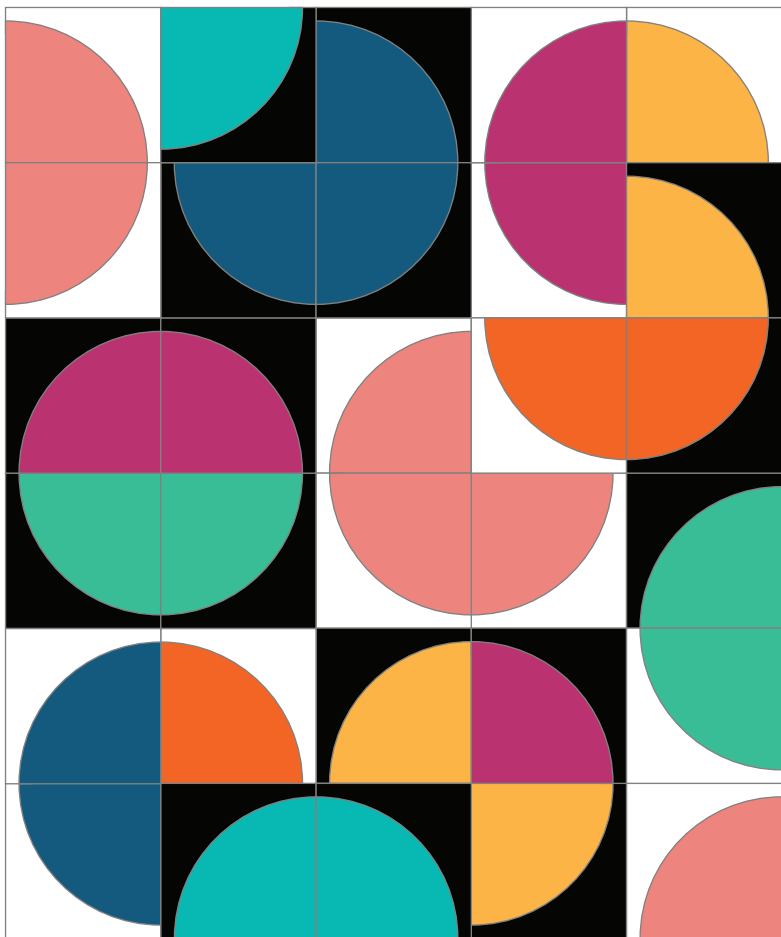
Full Circle



Orange Peel



Classic Curves Quilt



Quilt Size: 30" x 36"

Block Size: 6"

30 Blocks set 5 x 6

Fabric Requirements

White ½ yard
 Black ½ yard
 Colors 1 yard total
 Binding ⅓ yard
 Backing 36" x 42"
 Batting 36" x 42"

Cutting

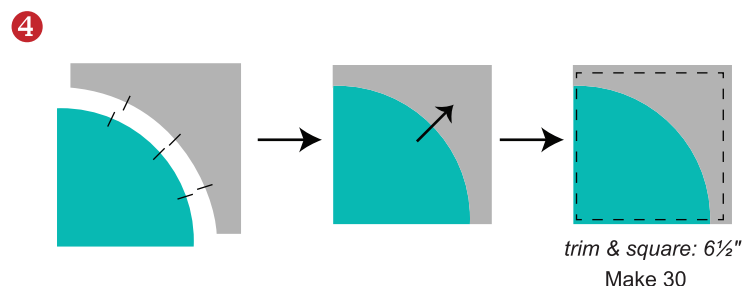
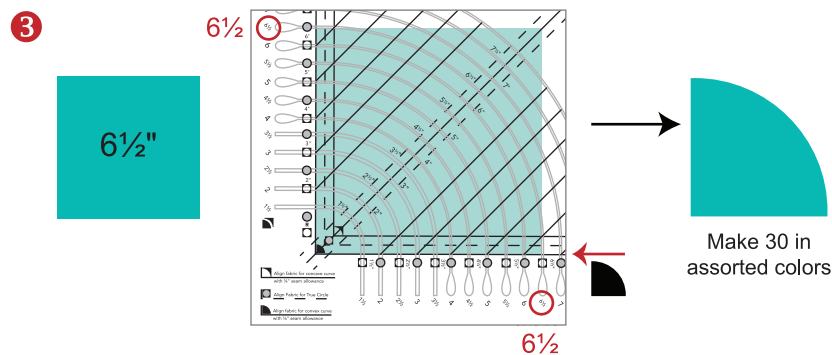
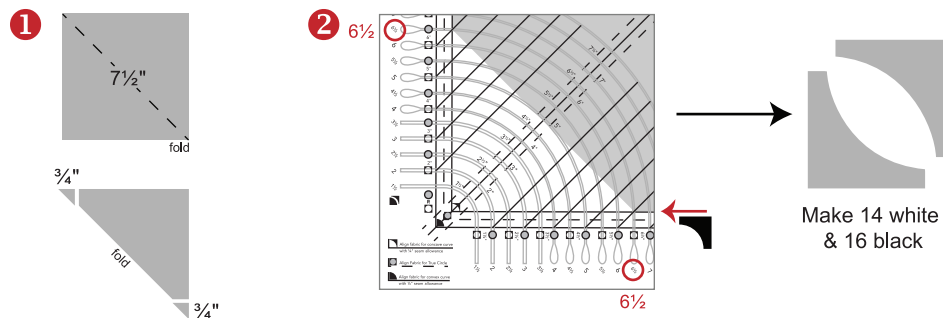
White (7) 7½" squares
 Black (8) 7½" squares
 Colors (30) 6½" squares
 Binding (4) 2¼" strips

Cut all curves using the 6½" cutting groove on the ruler

1. Each 7½" white and black square: fold once on diagonal. Cut ¾" from folded corners as shown below.
2. Leave square folded and align the cut corners with lines on the ruler for cutting *concave* curve. Cut through 6½" cutting groove. This yields two concave shapes from each square or a total of 30 shapes.
3. Each color square: align one corner with the lines on ruler for cutting *convex* shape. Cut through 6½" cutting groove. Cut 30 convex shapes.

Refer to illustrations and instructions on this card to sew each color convex shape to a black or white concave shape.

4. Make 30 blocks. Press toward the black/white. Trim and square as needed so all blocks are the same size with straight sides, 6½" square.
5. Arrange 6 rows of 5 blocks. Position black and white shapes and colors randomly or in a planned layout according to your preference.
6. Sew the blocks in rows. Press seams open.
7. Sew rows together to finish quilt top. Press.



Classic Curves
ruler

ColorGirlQuilts.com



© Design and Text by Sharon McConnell

Questions and Compliments: ColorGirlQuilts@gmail.com