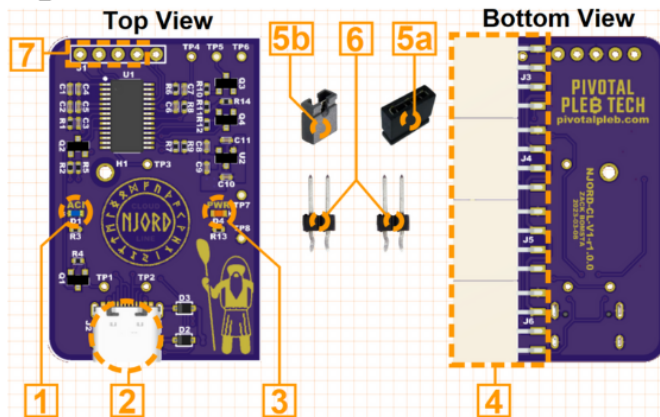


# Njord Cloudline Quick Start Guide



## PIVOTAL PLEB TECH

1. Fan Plugged in Indicator LED
2. AC Infinity Cloudline Socket
3. DC Power Indicator LED
4. Fan Port Connectors
- 5a. 3-pin Jumper
- 5b. 2-pin Jumper
6. Press-to-Install Header Pins (2)
7. Header Pin Holes

## Installation Instructions

**These instructions assume that an AC Infinity Cloudline fan has already been installed on the miner**

1. Unplug fan and miner from AC mains
2. Remove miner's top cover and unplug all stock fans (if present) from miner's control board
3. Plug the Njord board's "Fan Port Connectors" [4] into the 4 fan ports
4. Plug the fan's USB-C connector into the "AC Infinity Cloudline Socket" [2]
5. Plug the fan into AC mains
6. Plug the miner into AC mains

Running 3rd party firmware? See the included "Operating Mode Configuration Card."

# Operating Mode Configuration

There are 4 selectable operating modes to help optimize performance across various miner configurations. See the included Quick Start card for board details. To select a mode:

1. Insert the "Press-to-Install Header Pins (2)" [6] into the "Header Pin Holes" [7].
2. Identify the correct jumper configuration according to the jumper config table on the back of this card.
3. Place the "3-pin Jumper" [5a] or "2-pin Jumper" [5b] in the correct position according to the jumper config table.

For more details, scan the QR code on the back of this card for the full "Njord Cloudline User Manual."

## Jumper Config Table

Mode	Jumper Position	Miner Firmware	Max Fan Speed
Mean Reversion Max Fan	• • • • No Jumper	Bitmain Braiins	100%
Mean Reversion Limited Fan	• - • •   • 3 Left Pins	Bitmain Braiins	70%
Slew Max Fan	• - •   • • 2 Left Pins	LuxOS Vnish	100%
Slew Limited Fan	•   • - •   • 2 Middle Pins	LuxOS Vnish	70%

PIVOTAL  
PLEB TECH

Scan for Full  
User Manual

