

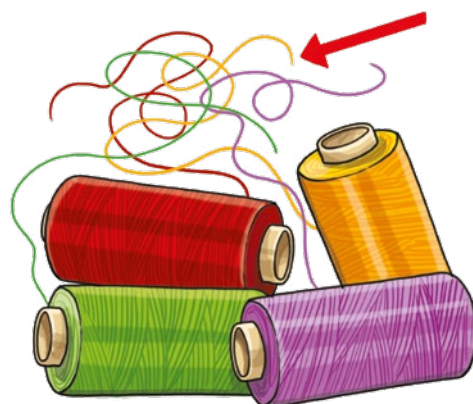
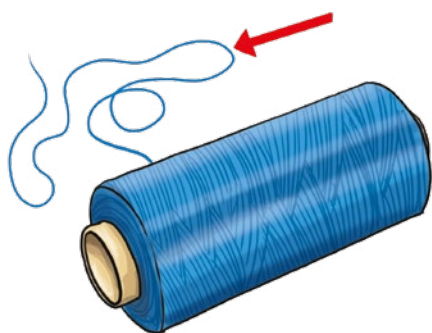
# UNITÀ DIDATTICA 3

## RICONOSCERE PAROLE DI UGUALE LUNGHEZZA

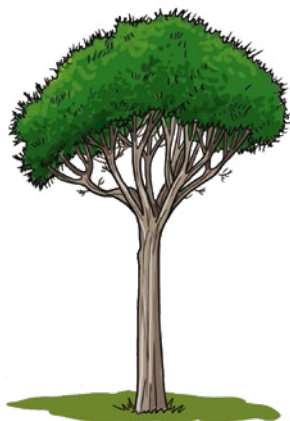
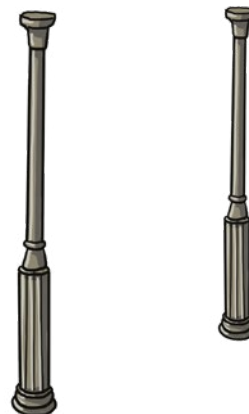
### SCHEDE 16-24

- ▶ **OBIETTIVO:** trovare nelle parole scritte alcune caratteristiche particolari delle lettere/grafemi di cui sono composte.
- ▶ **FOCUS DELL'ATTIVITÀ:** accoppiare parola-figura e avviare la discriminazione analitica delle lettere.

# Confronto di parole

SCHEDA  
**16**  
UD 3**FILI****FILO****FATE****FATA**

# Confronto di parole



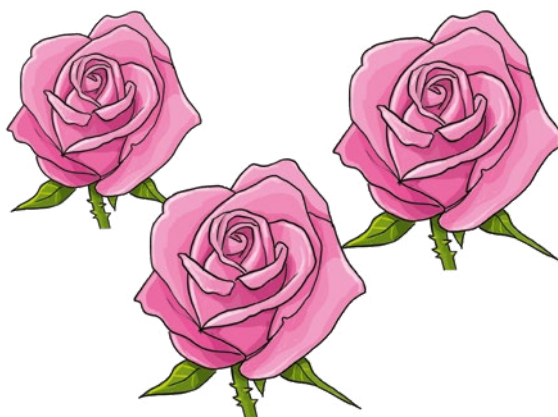
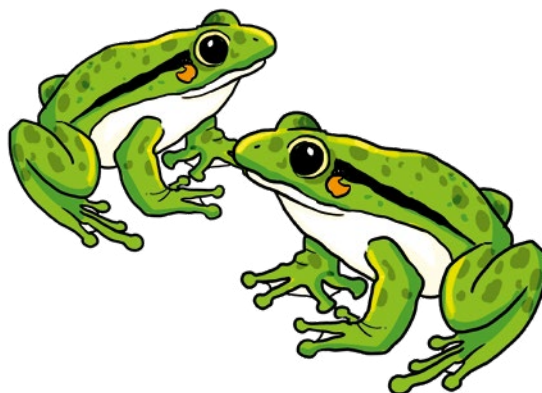
PINI

PINO

PALI

PALO

# Confronto di parole

SCHEDA  
**18**  
UD 3

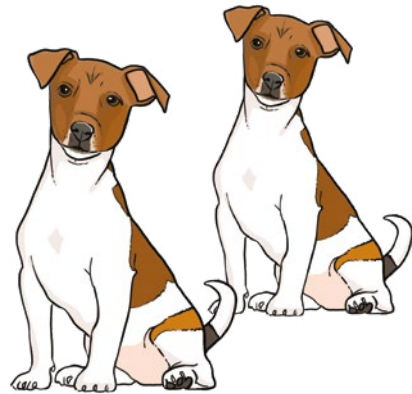
ROSE

ROSA

RANE

RANA

# Confronto di parole



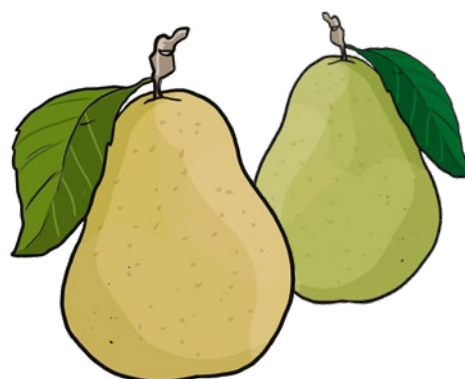
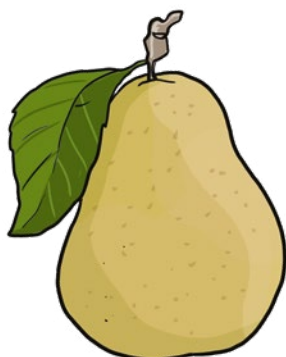
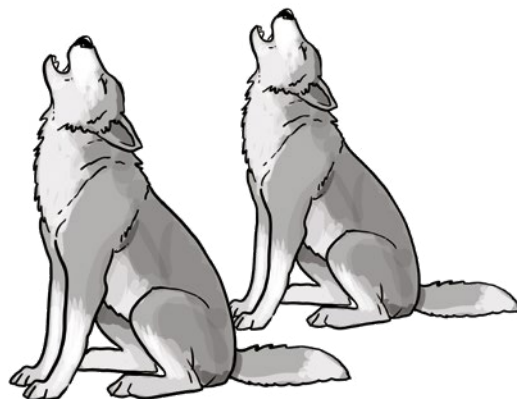
CASE

CASA

CANI

CANE

# Confronto di parole



PERE

PERA

LUPI

LUPO

# Confronto di parole



VASI

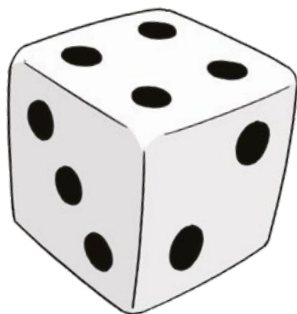
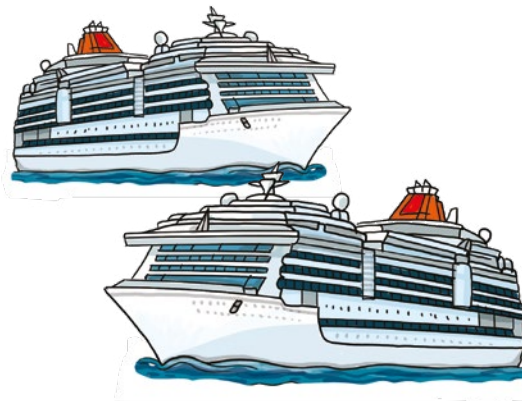
VASO

TOPI

TOPO



# Confronto di parole



DADI

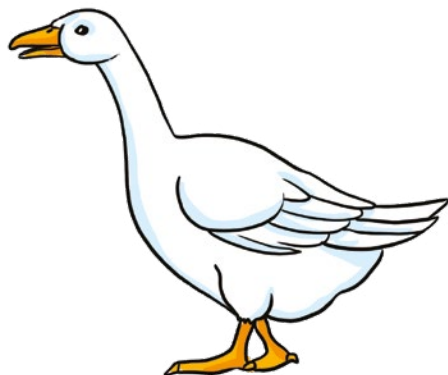
DADO

NAVI

NAVE



# Confronto di parole



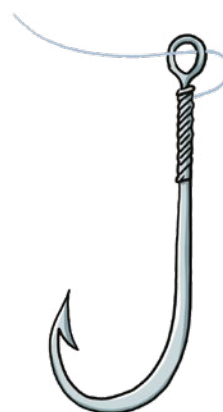
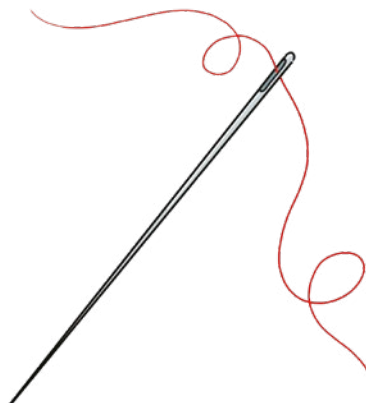
ORO

OCA

UVA

APE

# Confronto di parole



AMO

ALA

AGO

APE