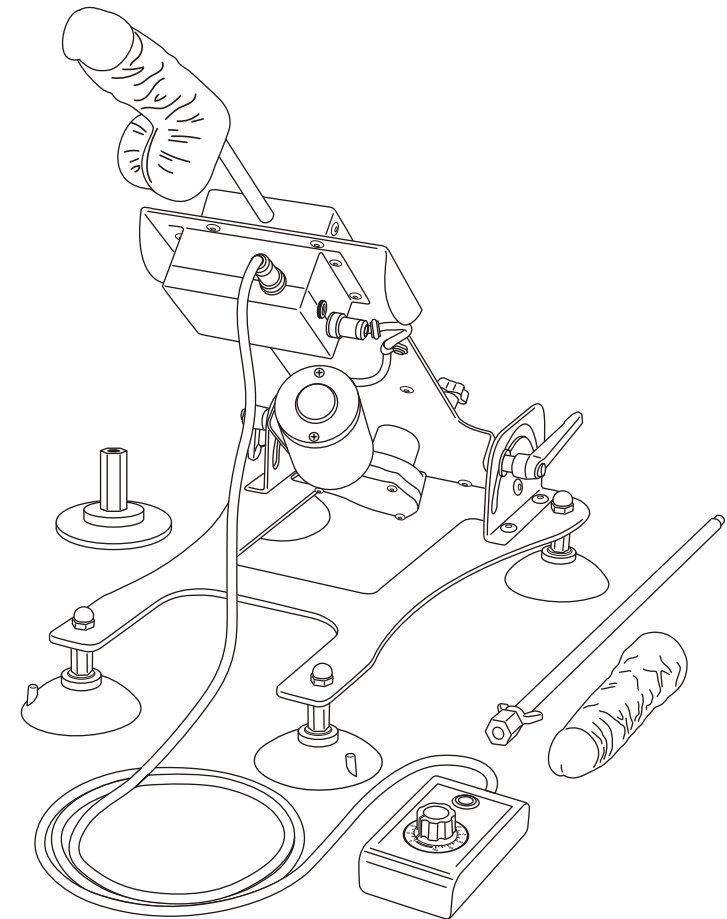


whipSMART

REMOTE CONTROL

ANGLE MASTER

With Suction Stabilizers



INSTRUCTION MANUAL

whipSMART

www.whipsmarttoys.com

All rights reserved. © XGEN, LLC. Horsham, PA 19044

UK Responsible Person:

ArangaRanga UK LTD, 20-22 Wenlock Road, London, N17 GU, UK.

Phone: +44 2037692960,

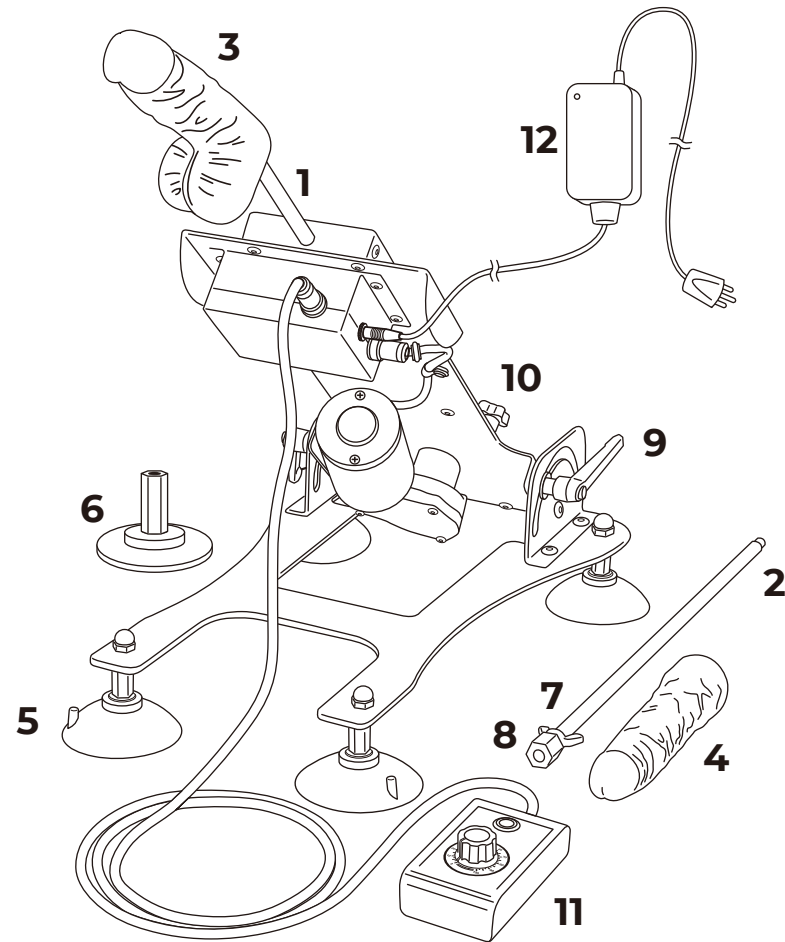
E-Mail: UKresponsibleperson@arangaranga.com

EU Responsible Person: ArangaRanga SL, Paseo de la Castellana 194,
Madrid, 28046, Spain.

Phone: +34910054258, E-Mail:

EUresponsibleperson@arangaranga.com

OVERVIEW



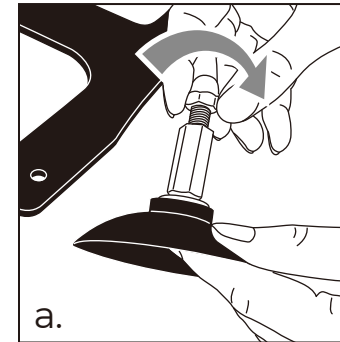
1. 18" Metal Extender
2. 12" Extension Rod
3. Dildo Attachment 1
4. Dildo Attachment 2
5. Suction Cup Base (x 4)
6. Circular Mount for Suction Toys
7. Wingnut
8. Coupling
9. Angle Adjustment Knob (x 2)
10. Thrusting Range Adjustment Knob
11. Remote Control
12. Power Adapter
(DC14V IN/OUT & DC12V IN)

USER INSTRUCTIONS

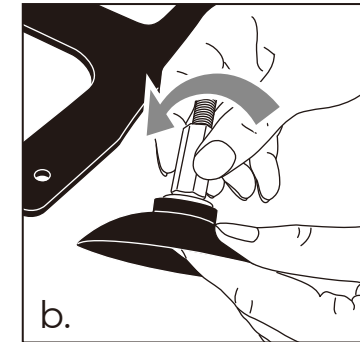
1. Clean Your Attachments Before and After Use:

Wipe the main body clean with a towel, warm water & soap, or with a non-alcohol based toy cleaner & cloth. Wipe dry with a soft towel.

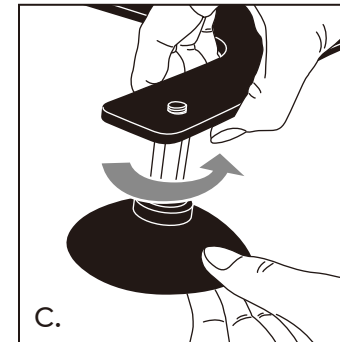
2. Install The Suction Cup Stands



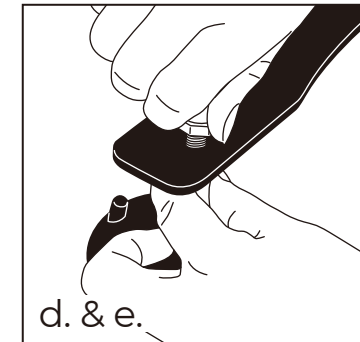
a.



b.



c.

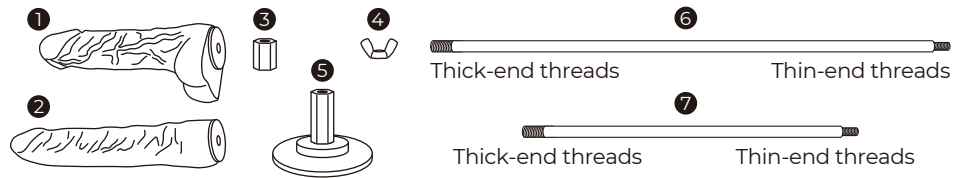


d. & e.

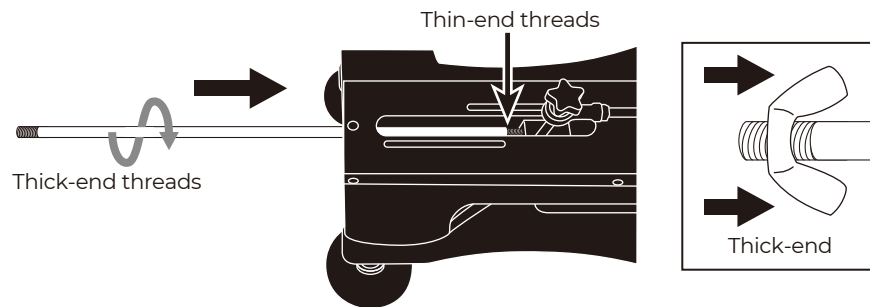
- a. Unscrew the cap nut from the top of the suction cup.
- b. Tighten the coupling onto the suction cup.
- c. Screw in the suction cup into the base of the machine.
- d. Tighten the cap nut onto the top of the suction cup.
- e. Tighten both the cap nut and the suction cup to ensure a tight fit.
- f. Repeat for the remaining 3 suction cup bases.

3. Installing The Metal Extenders

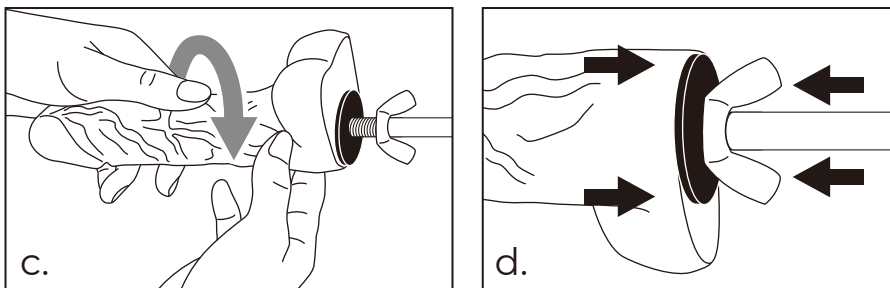
- ① Dildo Attachment 1 ② Dildo Attachment 2 ③ Coupling ④ Wingnut
 ⑤ Circular Mount for Suction Toys ⑥ 18" Metal Extender ⑦ 12" Extension Rod



- Insert thin-end of the extender into the machine body, screw in clockwise to tighten.
- Install the wingnut onto the thick-end of the extender with wings pointing towards the machine.

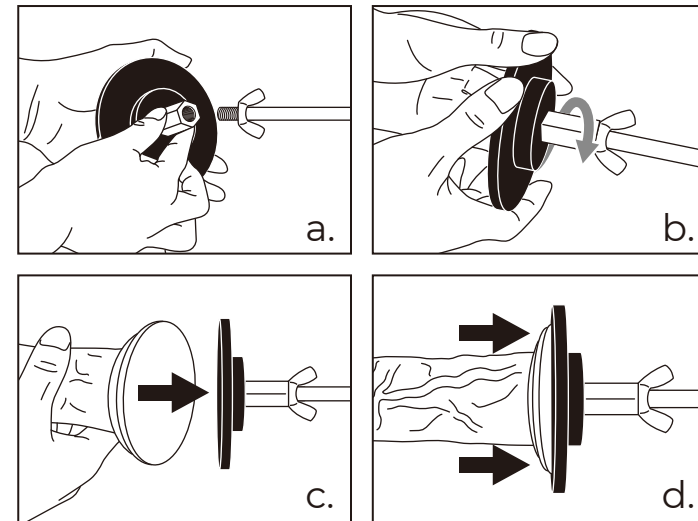


4. Securing Dildo Attachments



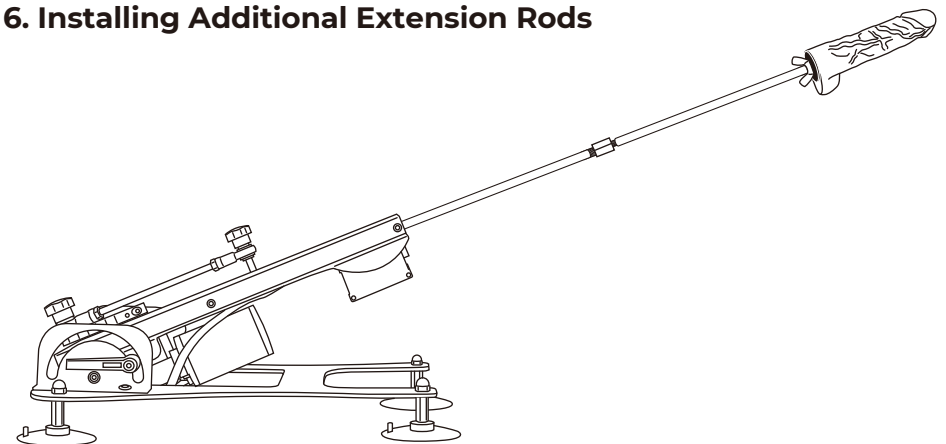
- Clean your attachments before and after use.
- Wipe the main body clean with a towel, warm water & soap, or with a non-alcohol based toy cleaner. Wipe dry with a soft towel.
- Select from the included dildo attachments and screw onto the extension rod.
- Tighten both the wingnut and the dildo attachment to ensure it is secured in place.
- Lube before use: It is recommended to lube yourself with a water-based personal lubricant before use for a more pleasurable experience.

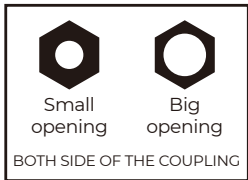
5. Using The Circular Suction Toy Mount



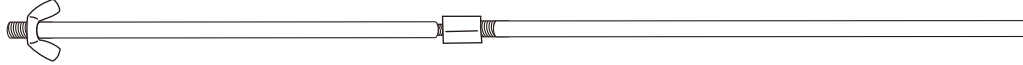
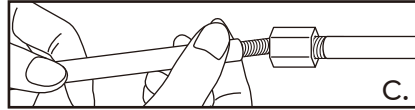
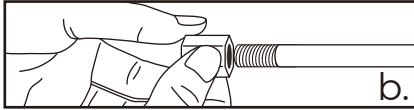
- Remove any dildo attachment from the machine. Keep the wingnut in place.
- A circular mount with a flat base is included with your sex machine. This allows you to use the item with any toy with a suction base.
- Select a toy with a suction base of your choice (not included) and attach it onto the flat side of the mount by pressing it down. Do not use excessive force.
- Please check and make sure the item is fixed tightly on the smooth surface.

6. Installing Additional Extension Rods





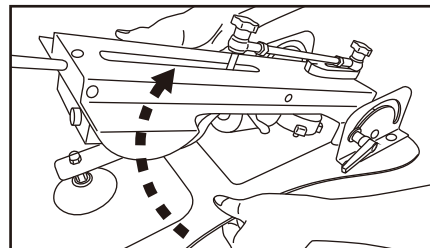
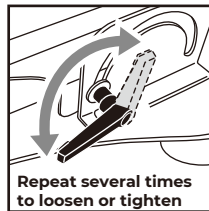
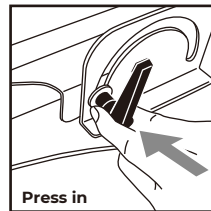
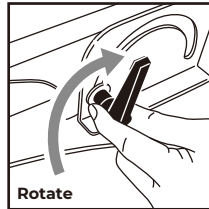
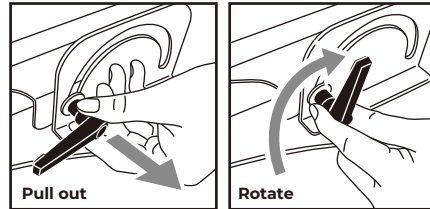
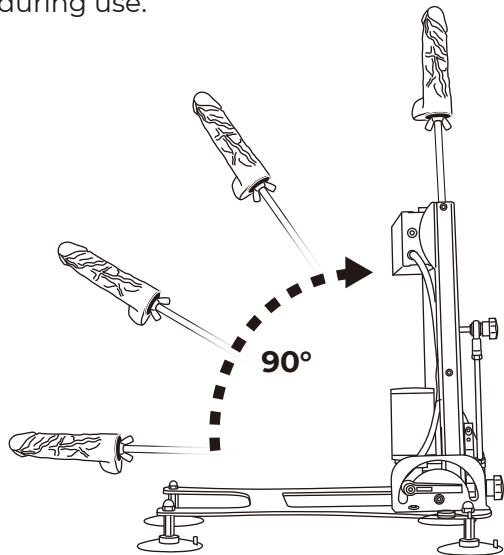
- ① Coupling
- ② Wingnut
- ③ 12" Extension Rod



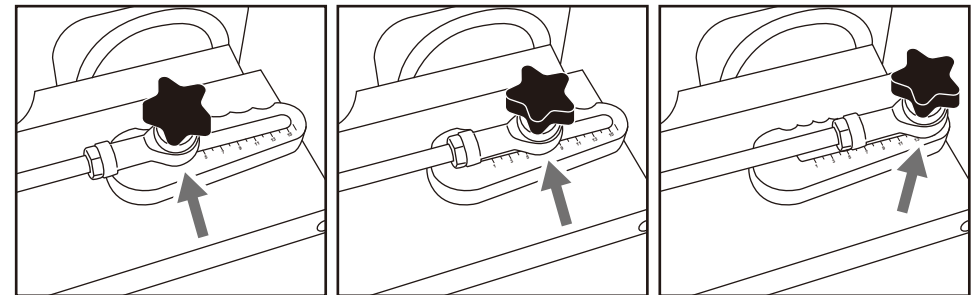
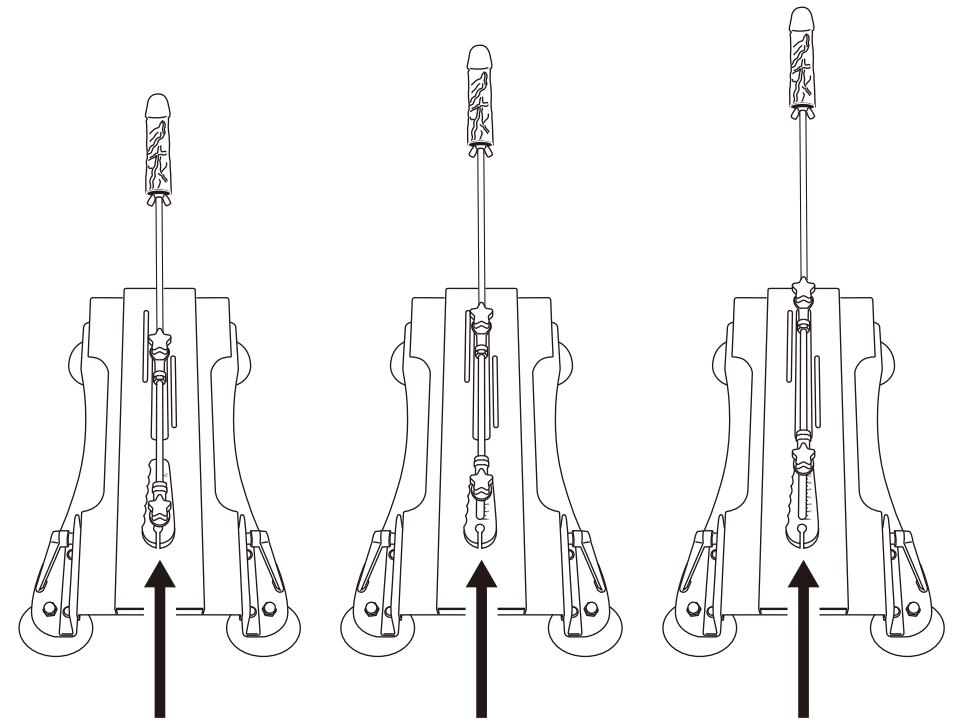
- a. Unscrew any attachments and wingnut from extension rod.
- b. Attach the coupling onto the end of extension rod, then attach the additional rod to the other end of the coupling.
- c. To attach a dildo attachment or suction mount, install the wingnut first following steps 4 and 5.

7. Adjust Angle of Sex Machine

To adjust the angle of your Premium Thruster, loosen both angle adjustment knobs slowly and tilt the main body of the machine to your desired angle. Tighten both knobs to secure the machine, to avoid any mishaps during use.

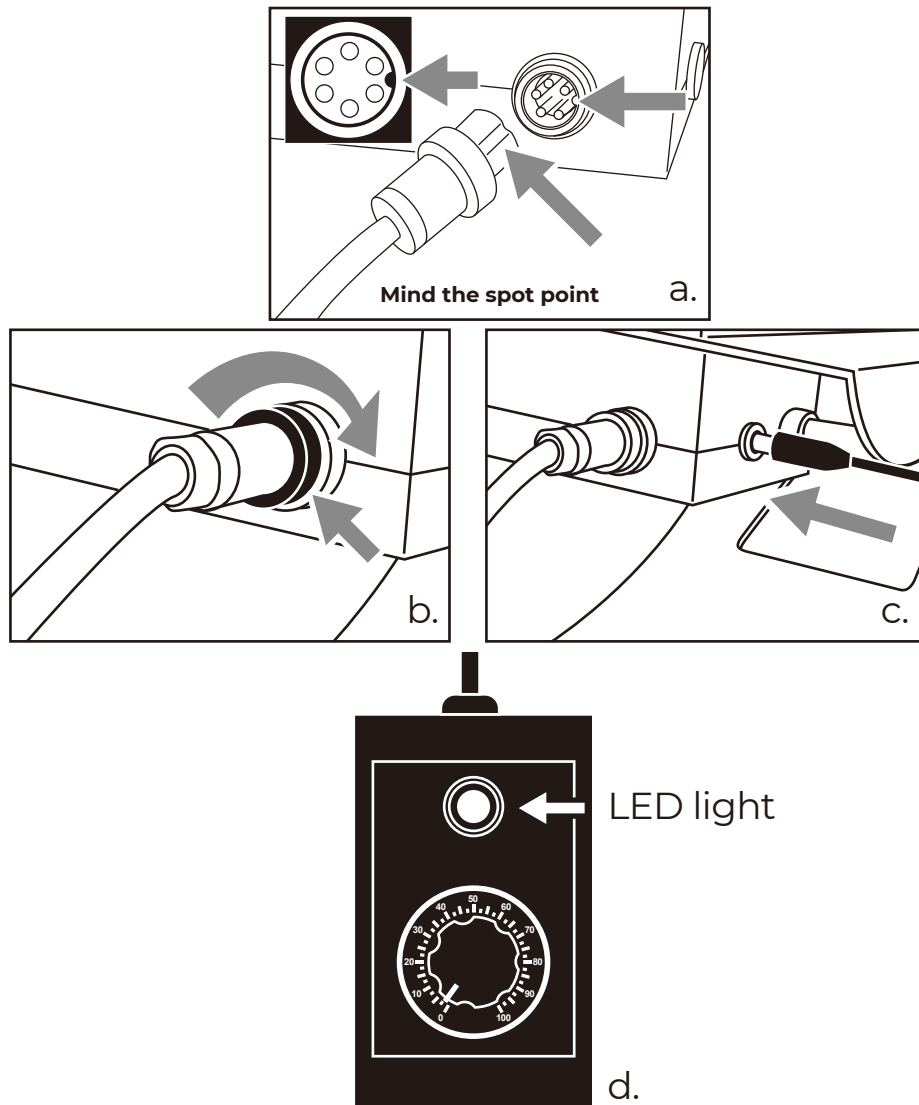


8. Adjust Range of Thrusting Motion.



- a. Loosen the knob at the back of the machine.
- b. Place the base of extension rod at desired number.
- c. A higher number will allow for a longer range of thrusting motion.
- d. Tighten the knob and ensure it is secured before use.

9. Installing Remote and Power



- Plug in and tighten the remote as shown in Diagram A & B.
- Install the power adapter and plugin to a power supply as shown in Diagram C.
- The remote and power adapter will light up indicating the machine is on.
- To increase the thrusting speed of the machine, turn the main knob of the Remote controller clockwise, and turn it counter-clockwise to decrease the thrusting speed.

WARNING:

IMPORTANT: Any individual who may be pregnant, has a pacemaker, suffers from diabetes, phlebitis and/or thrombosis, is at an increase risk of developing blood clots, or who has pins/screws/artificial joints or other medical devices implanted in his/her body should consult with a physician before using massaging device designed for home use.

- Do not reach for an appliance that has fallen into water. Unplug immediately.
- Do not use while bathing or in the shower.
- Do not place or store appliance where it can fall or be pulled into a tub or sink.
- Do not place in or drop into water or other liquid.
- Always unplug this appliance from the electrical outlet immediately after using or before cleaning.

For adult use only. For external use only. Remove all scarves, neckties, necklaces, and jewelry before using this massager.

CARE AND MAINTENANCE

Clean the machine with a soft, damp cloth. Do NOT fully submerge or clean with an alcohol or chemical-based cleaner

SPECIFICATIONS:

Materials

Machine materials:	Metal
Realistic Attachment:	PVC
Telescopic distance:	30~150mm
Max Telescopic Speed:	263.9rpm
Voltage:	110V-240V
Rated Voltage:	DC 24V/2.7A
Power:	64.8W

DISPOSAL INFORMATION

Disposal of old electronic equipment (applicable in the EU and other European countries with separate waste collection systems):



RoHS
2002/95/EC



The crossed-out dustbin symbol indicates that these items should not be treated as household waste, but rather brought to the appropriate collection point for recycling electrical and electronic equipment.

Email us at sales@xgenproducts.com for any unanswered questions

Designed and Developed by **Whipsmart™**

Made in China

SOLD AS A NOVELTY ONLY. This novelty is sold without guarantees of any kind, either expressed or implied. This product is a novelty only, for novelty use only, and you assume all risk of injury, damage or other for uses. Manufacturer will assume no liability for injury occurring from use of this product. By purchasing this product, You waive any claim based on use and release manufacturer from any liability for use as this is a novelty product.

In association with the product, XGEN LLC and/or manufacturer makes no warranties of any kind, either express or implied, including but not limited to warranties of merchantability and fitness for a particular purpose, of title. Any particular use of the product by a user is at the user's risk.

NO REPRESENTATIONS OR WARRANTIES, EITHER EXPRESS OR IMPLIED, OF MERCHANTABILITY, FITNESS FOR A SPECIFIC PURPOSE OR OF ANY OTHER NATURE ARE MADE WITH RESPECT TO INFORMATION OR THE PRODUCT TO WHICH INFORMATION MENTIONS. IN NO CASE SHALL THE INFORMATION BE CONSIDERED A PART OF OUR TERMS AND CONDITIONS OF SALE.