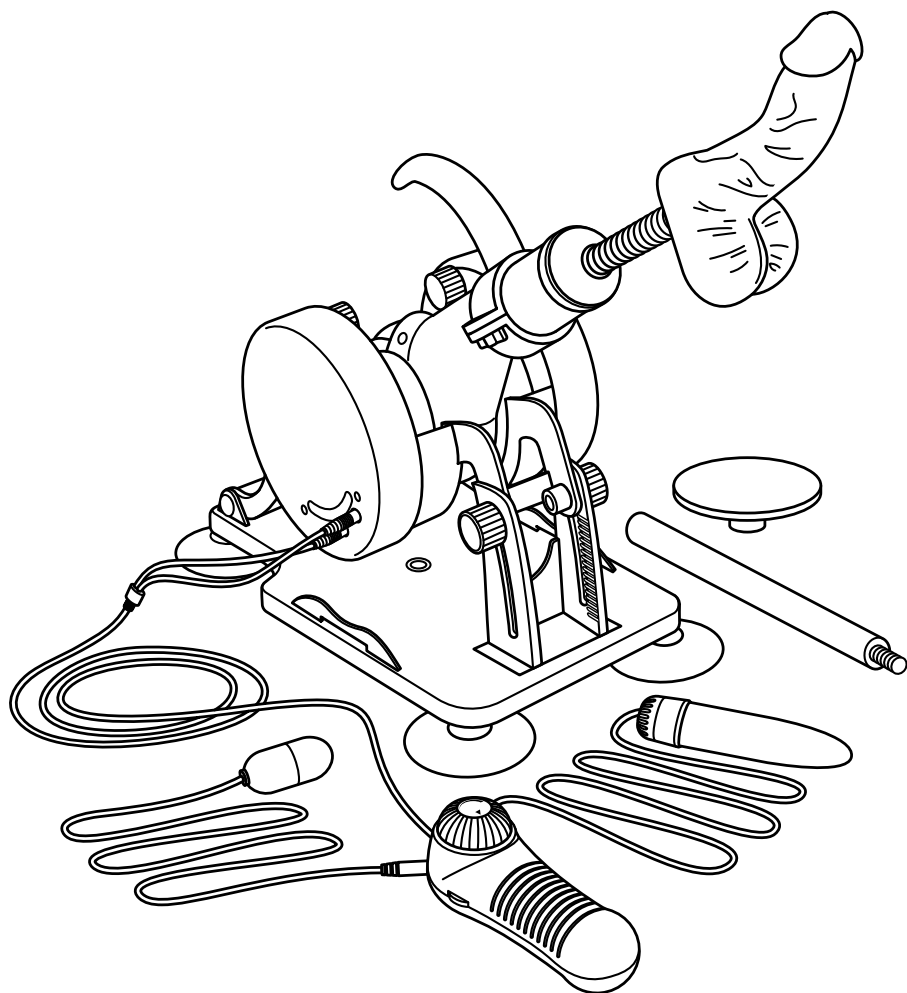


# whip**SMART**

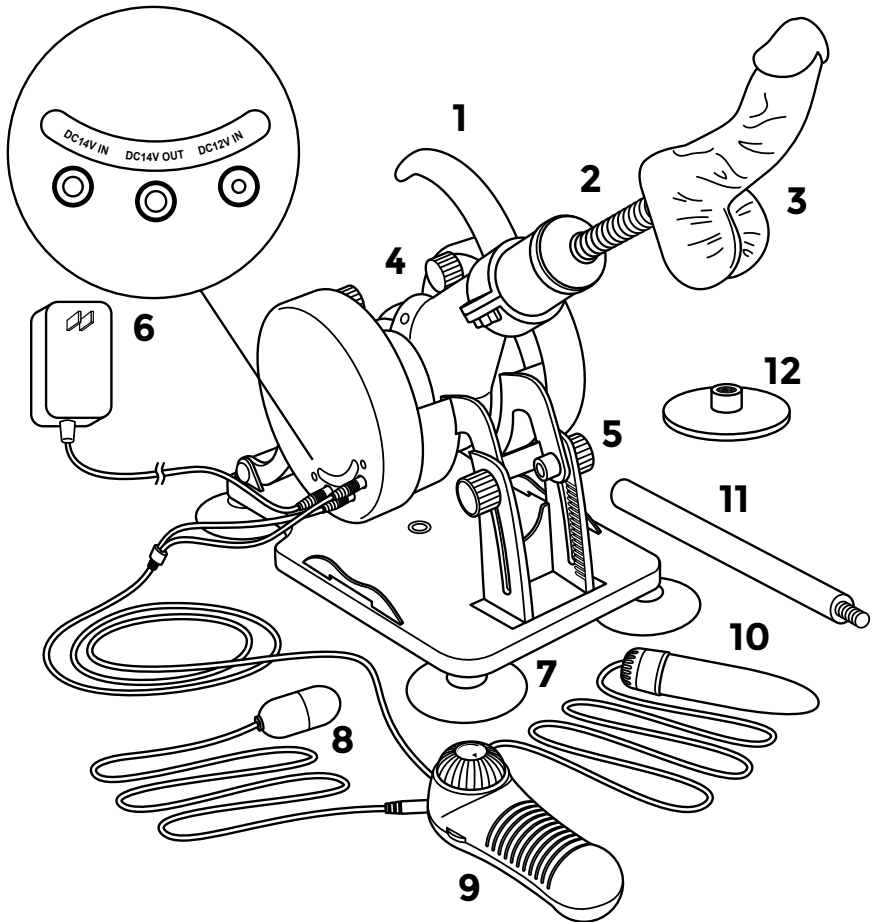
**REMOTE CONTROL**

## **PREMIUM THRUSTER**



## **INSTRUCTION MANUAL**

# OVERVIEW



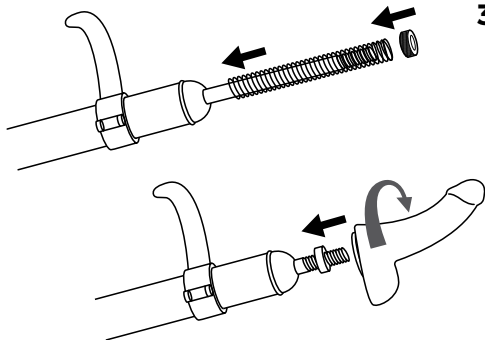
- |  |  |
|--|--|
| 1. Safety Lock Handle                            | 7. Base Suction Mounts                 |
| 2. Ramming Rod                                   | 8. Vibrating Love Egg                  |
| 3. 6" Realistic Attachment                       | 9. Remote Controller                   |
| 4. Height Adjustment Knobs                       | 10. 5" Mini Vibrator                   |
| 5. Angle Adjustment Knobs                        | 11. 7.8" Metal Extender                |
| 6. DC Plug-in Ports<br>(DC14V IN/OUT & DC12V IN) | 12. Circular Mount for<br>suction toys |

# USER INSTRUCTIONS

## 1. Clean Your Attachments Before and After Use:

Wipe the main body clean with warm water and soap, or with a non-alcohol based toy cleaner. Wipe dry with a soft towel.

## 2. Assemble the spring to the ramming rod(optional) to increase the thrusting force.



## 3. Adding The Attachment To Your Machine:

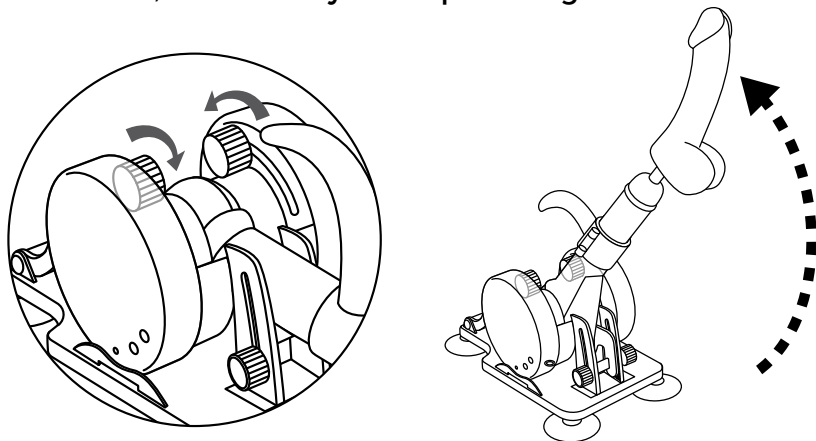
To use the attachment with your Premium Thruster, simply screw the attachment on to the end of the Ramming Rod. Ensure that the attachment is tightly secured before use.

## 4. Lube Before Use:

It is recommended to lube yourself with water based personal lubricant before use for a more pleasurable experience.

## 5. Adjusting The Angle Of Your Machine:

To adjust the angle of your Premium Thruster, loosen both Angle Adjustment Knobs slowly and tilt the main body of the machine to your desired angle. Tighten both knobs to secure the machine, to avoid any mishaps during use.



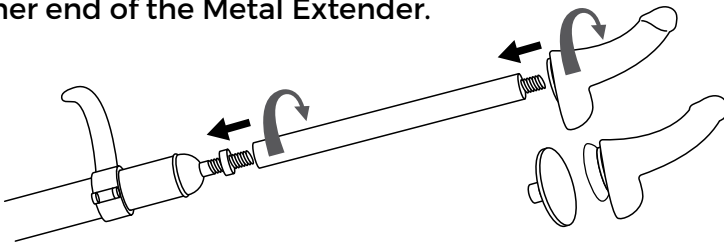
## 5. Adjusting The Height Of Your Machine:

To adjust the height of your Premium Thruster, loosen both Height Adjustment Knobs slowly and raise or lower the main body of the machine to your desired height. Tighten both knobs to secure the machine, to avoid any mishaps during use. Repeat the steps on how to adjust the angle of the machine should the angle be unsatisfactory.



## 6. Extending The Reach Of Your Machine's Attachment:

Each machine comes with a 7.8" Metal Extender that allows you to extend the reach of your machine. To use this, first please make sure the Realistic Attachment is not attached to the Ramming Rod. Next, screw in the Metal Extender onto the Ramming Rod. Finally, screw in the Realistic Attachment onto the other end of the Metal Extender.

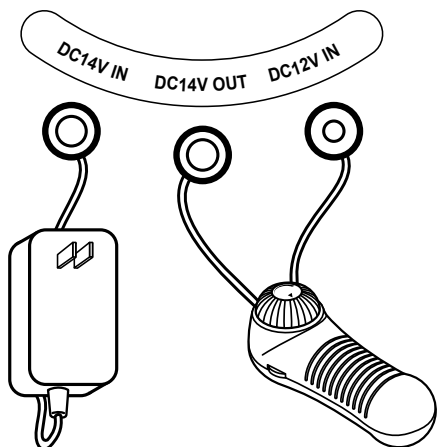


## 7. Circular Mount for Suction Toys:

A Circular Mount with a flat base is included with your Premium Thruster. This allows you to use the item with any toy with a suction base. Simply attach the mount to the Ramming Rod or Metal Extender and place any toy with a suction base on the mount.

## 8. Please Check and Make Sure The Item Is Fixed Tightly on the Smooth Surface.

## Using & Operating Your Machine:

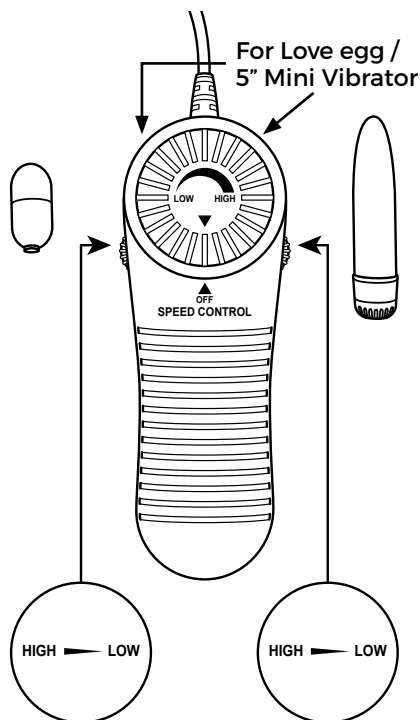


To use your machine, connect the power adapter to an AC outlet and insert the jack into the leftmost port (**DC14V IN**). To connect the Bullet Controller, attach the jacks of the controller into the respective ports in the machine, with the middle being the port that powers the controller (**DC14V OUT**) and the right port that allows the controller to change the thrusting speed of the machine (**DC12V IN**).

## Remote Controller:

To control the Vibrating Attachments with the Remote Controller, insert the jacks of the bullets into either port of the controller.

To increase the thrusting speed of the machine, turn the main knob of the Remote controller clockwise, and turn it counter-clockwise to decrease the thrusting speed. To increase the vibration intensity of the Vibrating Attachments, use the intensity sliders on the side of the Remote Controller to control the respective Vibrating Attachment. Turn the intensity sliders all the way down to **\*LOW\*** and make sure there is an audible click sound, this turns off the respective Vibrating Attachments. To use the Vibrating Attachments again, simply turn the intensity sliders towards **\*HIGH\***.



## WARNING:

**IMPORTANT:** Any individual who may be pregnant, has a pacemaker, suffers from diabetes, phlebitis and/or thrombosis, is at an increase risk of developing blood clots, or who has pins/screws/artificial joints or other medical devices implanted in his/her body should consult with a physician before using massaging device designed for home use.

1. Do not reach for an appliance that has fallen into water. Unplug immediately.
2. Do not use while bathing or in the shower.
3. Do not place or store appliance where it can fall or be pulled into a tub or sink.
4. Do not place in or drop into water or other liquid.
5. Always unplug this appliance from the electrical outlet immediately after using or before cleaning.

**For adult use only. For external use only. Remove all scarves, neckties, necklaces, and jewelry before using this massager.**

## CARE AND MAINTENANCE

Clean the massager with a soft, damp cloth. Do NOT fully submerge or clean with an alcohol or chemical-based cleaner

## SPECIFICATIONS:

### Materials

Machine materials:	ABS, Metal, TPE
Realistic Attachment:	TPR
Love Egg & Mini Vibe:	ABS

Telescopic distance:	60mm
Max Telescopic Speed:	0-200 / min
Max Stroking power:	80 Newton
Voltage:	AC 100-240V, 50-60Hz
Rated Voltage:	DC 14V/2A
Power:	35W

# DISPOSAL INFORMATION

Disposal of old electronic equipment (applicable in the EU and other European countries with separate waste collection systems):



**RoHS**  
2002/95/EC



The crossed-out dustbin symbol indicates that these items should not be treated as household waste, but rather brought to the appropriate collection point for recycling electrical and electronic equipment.

Email us at [sales@xgenproducts.com](mailto:sales@xgenproducts.com) for any unanswered questions

Designed and Developed by **Whipsmart™**

Made in China

**SOLD AS A NOVELTY ONLY.** This novelty is sold without guarantees of any kind, either expressed or implied. This product is a novelty only, for novelty use only, and you assume all risk of injury, damage or other for uses. Manufacturer will assume no liability for injury occurring from use of this product. By purchasing this product, You waive any claim based on use and release manufacturer from any liability for use as this is a novelty product.

In association with the product, XGEN LLC and/or manufacturer makes no warranties of any kind, either express or implied, including but not limited to warranties of merchantability and fitness for a particular purpose, of title. Any particular use of the product by a user is at the user's risk.

**NO REPRESENTATIONS OR WARRANTIES, EITHER EXPRESS OR IMPLIED, OF MERCHANTABILITY, FITNESS FOR A SPECIFIC PURPOSE OR OF ANY OTHER NATURE ARE MADE WITH RESPECT TO INFORMATION OR THE PRODUCT TO WHICH INFORMATION MENTIONS. IN NO CASE SHALL THE INFORMATION BE CONSIDERED A PART OF OUR TERMS AND CONDITIONS OF SALE.**



All rights reserved. © XGEN, LLC. Horsham, PA 19044

UK Responsible Person:

ArangaRanga UK LTD, 20-22 Wenlock Road, London, N17 GU, UK.

Phone: +44 2037692960,

E-Mail: [UKresponsibleperson@arangaranga.com](mailto:UKresponsibleperson@arangaranga.com)

EU Responsible Person: ArangaRanga SL, Paseo de la Castellana 194,  
Madrid, 28046, Spain.

Phone: +34910054258, E-Mail:

[EUresponsibleperson@arangaranga.com](mailto:EUresponsibleperson@arangaranga.com)