

THE
STOMP
travel system

INSTRUCTIONS FOR USE



Product may differ slightly
from image shown

 ickle bubba

Dear Parents
 Congratulations on the purchase of your Stomp Travel System!
 Your child's safety can only be guaranteed if this product is used according to these instructions. Therefore, please take time to read through this instruction manual carefully and keep for future reference.

Contents

Features	3
Components	4
Important Safety Information	6
Set Up & Assembly	7
Carry Cot Set Up	10
Seat Unit Set Up	12
Carry Cot/Seat Unit Attachment	13
How to use the stroller	14
Adapter/ Capsule Attachment	17
Accessories	18
Care and Maintenance	19
Warranty Information	20



Product may differ slightly from image shown

FEATURES



Available Configurations



Carry Cot



Stroller

- | | |
|--------------------------------------|---|
| 1. Interchangeable hood | 7. Adjustable handle |
| 2. Removable bumper bar | 8. Easy action fold without removing seat |
| 3. 5-point safety harness | 9. Reclining seat unit |
| 4. Comfortable seat liner | 10. Forward and rear-facing options |
| 5. 360 degree swivel/lockable wheels | 11. Easy action foot brake |
| 6. Built-in front suspension | 12. Large easy access shopping basket |

COMPONENTS



- | | | | | | |
|---|-------------------------|---|--------------------------|---|-----------------------|
| A | Handlebar & Cover | I | Rear Wheel | Q | Seat/Carry Cot Frame* |
| B | Handlebar Adjuster | J | Wheel Disassembly Button | R | Carry Cot Fabric |
| C | Right Folding Button | K | Canopy | S | Seat Unit Fabric |
| D | Left Folding Button | L | Bumper Bar | T | Chassis |
| E | Seat Unit | M | Canopy Connector | U | Carry Cot Apron |
| F | Seat Disassembly Button | N | Recline Buttons | V | Raincover |
| G | Brake Bar | O | Revolving Wheel Lock | W | Tether Strap |
| H | Storage Basket | P | Front Wheel | | |

*IMPORTANT: The Carry Cot/Seat Unit Frame (Q) and the Carry Cot Fabric (R) are already assembled. When converting from carry cot mode to stroller mode, the carry cot fabric will need to be removed from the carry cot frame in order for the seat unit to be assembled with component (S).

IMPORTANT SAFETY INFORMATION



WARNINGS!

IMPORTANT: Read these instructions carefully before use and keep them for future reference. Your child's safety may be affected if you do not follow these instructions. Failure to follow these warnings and the instructions could result in serious injury or death.

The Stomp carry cot unit is suitable for children from birth. It is suitable for a child who cannot sit up unaided, roll over and cannot push itself up on its hands and knees. Maximum weight of the child is 9kgs. The Stomp seat unit is suitable for children from 6 months up to 22kgs (or 4 years, whichever comes first).

FOLLOW THE MANUFACTURERS INSTRUCTIONS.

WARNING: TO AVOID INJURY OR DEATH: ALWAYS APPLY THE BRAKES WHENEVER THE PRAM/STROLLER IS STATIONERY.

- DO NOT LEAVE CHILDREN UNATTENDED.
- SECURE THE CHILD IN THE HARNESS AT ALL TIMES.
- DO NOT CARRY EXTRA CHILDREN OR BAGS ON THIS PRAM/STROLLER.
- MAKE SURE CHILDREN ARE CLEAR OF ANY MOVING PARTS IF YOU ADJUST THE PRAM/STROLLER.
- USE THIS HARNESS AT ALL TIMES.
- USE THIS STRAP TO STOP THE PRAM/STROLLER ROLLING AWAY.
- The vehicle is not to be used as an unsupervised sleeping environment.
- It is unsafe to use accessories other than those approved by Ickle Bubba.
- PUT ON ALL THE BRAKES WHENEVER YOU PARK THE PRAM OR STROLLER.
- MAKE SURE CHILDREN ARE CLEAR OF ANY MOVING PARTS IF YOU ADJUST THE PRAM OR STROLLER, OTHERWISE THEY MAY BE INJURED.

INSTRUCTIONS FOR SAFE USE

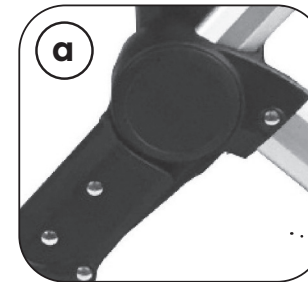
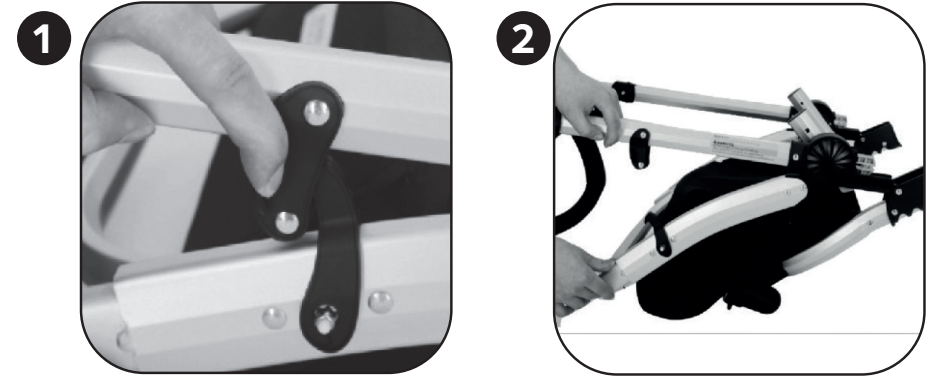
This stroller has been designed for use on flat or gently sloped surfaces. Using this stroller on uneven or higher sloped surfaces may cause the stroller to become unstable and tip over.

- Ensure that all locking devices are engaged before use.
- Use the tether strap to prevent the stroller rolling away.
- Never leave safety harness connected when not fitted to a child in the stroller, as this may create loops that cause a strangulation hazard.
- Fingers or parts of the body could be injured when the stroller is being folded or unfolded. Please use caution when folding or unfolding the stroller.
- To avoid injury ensure that your child is kept away when folding and unfolding the stroller.
- Never leave a child in the pram/stroller when ascending or descending stairs or escalators. Use great care when using the stroller on other moving surfaces.
- Regularly inspect all parts and locking devices, promptly replace worn out or broken parts.
- Use only the accessories which are supplied by Ickle Bubba and approved for use with this stroller.
- To prevent the risk of the stroller catching fire, do not park it near an open fire, heater or barbecue.
- Do not run or jog with this stroller.
- Shopping basket capacity should not be more than 2.5kg.
- Be aware of the danger of moving parts, they can cause injury.

THE STOMP V3 PRAM HAS BEEN APPROVED IN ACCORDANCE TO AS/NZS 2088 : 2013

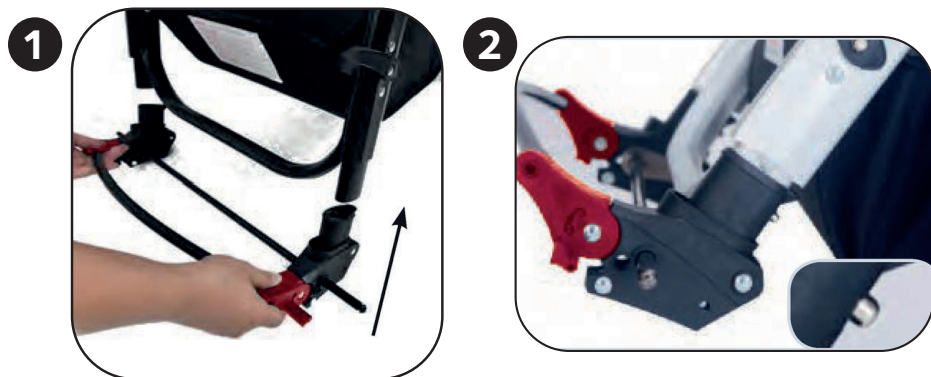
SET UP & ASSEMBLY

Unfolding the Stroller



1. Squeeze the stroller frame together slightly whilst pulling the release catch as shown.
2. Pull the stroller upwards until you hear the frame click into the upright position. Test the chassis by pushing downwards on the handle bar to make sure it is securely locked in to place at the joint (a).

Brake Bar Installation



Rear Wheel Installation



Brake Bar Installation

1. Please ensure the chassis is unfolded before installing the brake bar and wheels.
Attach the brake bar to the rear of the chassis as shown above.
2. Ensure the silver locking clips are visible on each side and test this by pulling the brake bar downwards once it has been installed.

Rear Wheel Installation

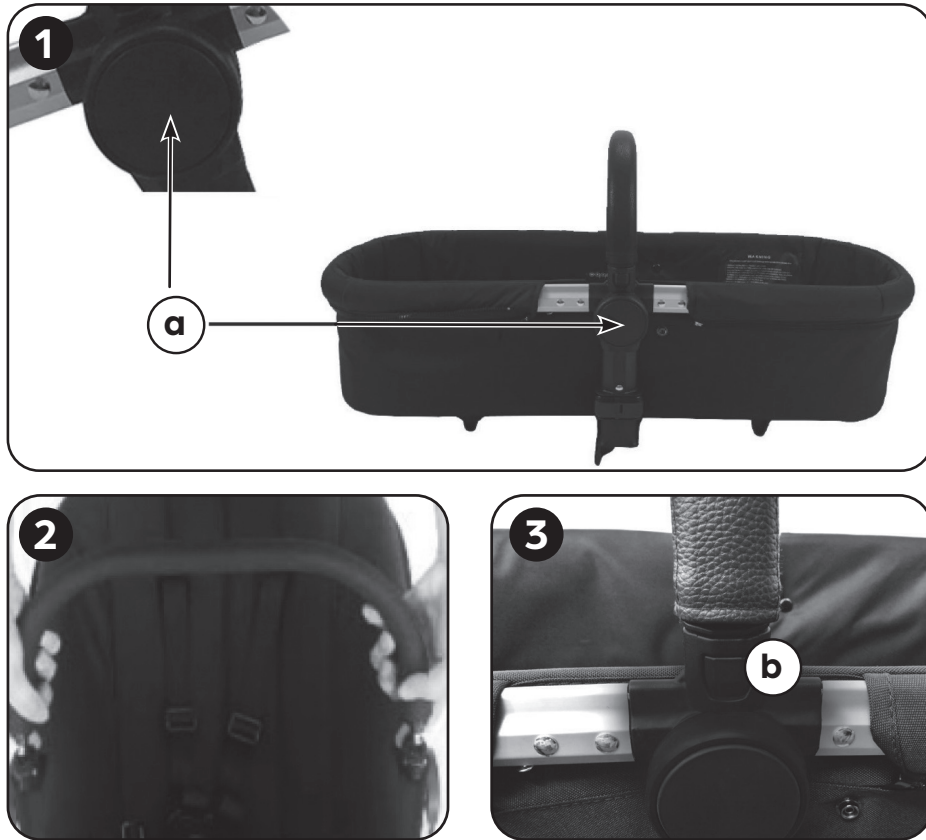
3. To attach the rear wheels simply press the centre button whilst pushing on to each side of the axle. Test this by trying to remove the wheels without pressing the centre button.
4. To disassemble the wheels push the centre button and pull.

Front Wheel Installation



1. Keep holding the front wheel button and attach the front wheel onto the chassis.
Repeat other side.
2. Please ensure you test your installation by pulling the front wheel down a few times before using.
NOTE: Please ensure that the front wheels are locked when using on rough terrain.
To take the front wheel off push the silver button and pull down on the wheel.

CARRYCOT SET UP



Preparing the Carry cot

1. The carry cot fabric should already be attached to the carry cot/seat unit frame.
IMPORTANT: The position of the carry cot may need to be adjusted to make it level.
 This can be done by firmly pressing on the recline buttons and making sure this all points vertically downwards (a) located either side of the carry cot frame, as shown above.

Bumper Bar Installation

2. Line up the holes on each side before pushing firmly into place.
3. To remove, press the centre button (b) inwards whilst pulling the bumper bar upwards.

Canopy Installation



1. Take the longer strip from part (a) and thread it through the front section of the canopy fabric (b). Repeat the same process with the shorter strip from part (a) by threading it through the rear part of the canopy fabric.
2. Make sure the canopy connectors are facing inwards.
3. Insert the shorter strip from part (a) into the rear holes and the larger strip into the front holes of the canopy connectors. Make sure to wrap elastic around the base of the connectors as per image.
4. With the canopy in place, fit the connectors onto the frame.

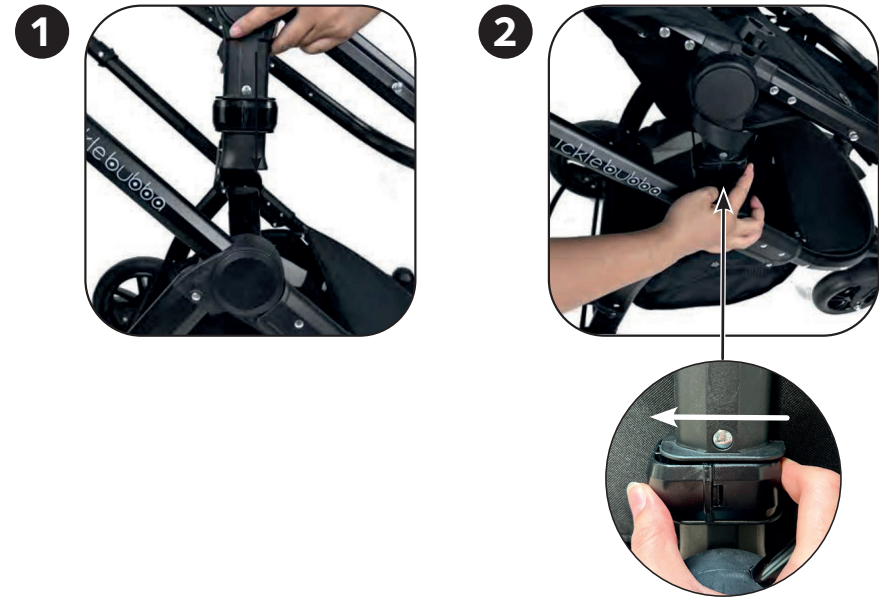
SEAT UNIT SET UP

Preparing the Seat Unit



1. Remove the carry cot fabric from the frame in preparation for the seat unit attachment.
2. To attach the seat unit fabric, first slide the top of the seat fabric onto the top of the chassis.
PLEASE NOTE: The top of the chassis will not have the studs on.
3. Feed the two narrow fabric trim panels positioned either side of the seat unit, into the slots on the inside of the seat frame which are positioned just below the bumper bar attachment point in the middle of the seat frame. The holes in the seat fabric need to be placed over the bumper bar brackets/holes.
4. Secure the fabric seat unit in place using the velcro fastenings and eyelet hooks.
5. Connect buckle under seat unit and tighten. Clip the canopy onto the frame.
PLEASE NOTE: The seat unit is suitable for children 6 months or over.

CARRY COT/STROLLER ATTACHMENT



Installation

1. Line up the release clips with the chassis and then push down until both sides click into place.
Please test this by pulling upwards.

IMPORTANT: There may be a slight movement to the carry cot when it is locked onto the chassis.

Disassembly

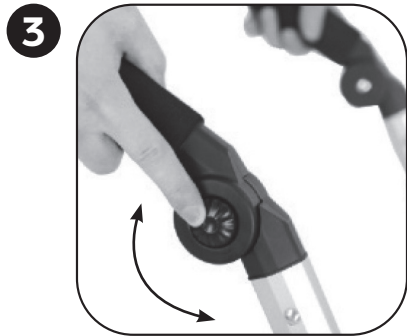
2. Push the release buttons forward until you feel it click before lifting upwards to remove.

Tether Strap



Whenever a child is in the pram and the brakes are not engaged, the large loop should be around your wrist.

HOW TO USE THE STROLLER



Front Wheel Lock Feature

1. To lock the front wheels in place, simply press the button downwards.
Pull upwards to release and enable 360 degree turn.
2. IMPORTANT: Ensure the wheels are in a locked position when using on uneven or rough terrain.

Handlebar Adjustment

3. To adjust the height of the handlebar press the buttons on each side inwards simultaneously whilst lifting up or down.

Seat Reclining Adjustment

4. To adjust the recline of the stroller, press the two recline buttons inwards simultaneously. There are 4 recline positions.

Reversing the Seat Unit



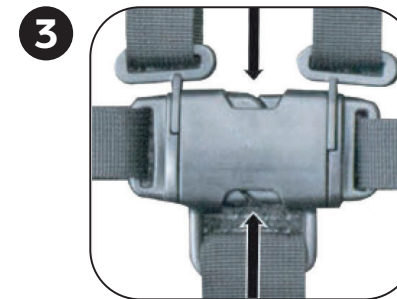
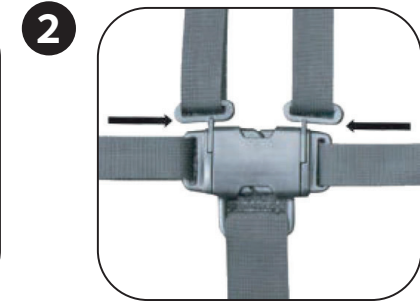
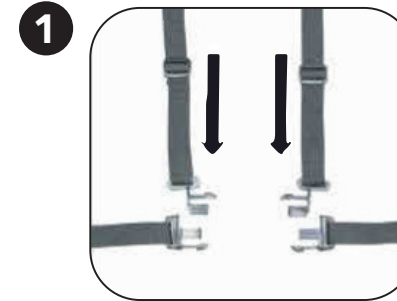
To reverse the seat unit direction, simply follow the same steps as indicated on page 13 as the seat unit can be Parent Facing or World Facing.

Pram Brake



To apply the brake simply push down. To remove the brake function lift upwards.

Safety Harness



1. Insert both shoulder strap fasteners securely into the loops located on the side straps. To lengthen move shoulder pad to find harness adjuster, hold to top near the seat and slide to change.
2. Press the two side straps into the centre clasp until both sides are clicked in securely. Adjust each strap length as required.
3. To undp the harness, press the buckles in the centre of the harness and pull apart.

Shoulder Straps: Select the position that places the shoulder strap level with, or below the top of the child's shoulder. To adjust harness height unhook the shoulder strap from the crotch buckle. Feed shoulder strap through the appropriate slot and reattach the shoulder strap to the crotch buckle.

Folding The Stroller



1. Press and hold down the fold button with your index finger.
2. Whilst holding down the fold button, pull both levers towards you and then fold the chassis down.
3. Follow the arrow direction. Be aware of the danger of moving parts, they can cause injury. Lift and carry the folded chassis safely by the handle.
4. Secure the chassis in place using the folding loc ensuring the storage latch has engaged automatically, if it has not then apply the latch manually.

ADAPTER/CAPSULE ATTACHMENT



Capsule Adapter Attachment

1. Insert each adapter into the capsule before attaching to the chassis.

Capsule Attachment

2. Line up the capsule adapters with the chassis and apply even pressure on both sides until you here a click.

Removing the Capsule

3. Press down firmly the 'release buttons' on either side of the capsules –please refer to capsule instructions for more details..

PLEASE NOTE: the capsule adapters will remain on the chassis after removing the capsule.

Store the adapters safely after use.

WARNINGS – IMPORTANT! Read carefully and keep for future reference.

Your child's safety may be affected if you do not follow these instructions. Only attach the capsules to face you on the chassis. Never leave your child unattended. Check that the capsule adaptors are correctly engaged before use. Remove the capsule adapters before using the stroller/pushchair with a seated child. This capsule does not replace a cot or a bed. Should your child need to sleep, then it should be placed in a suitable pram body, cot or bed.

ACCESSORIES



Raincover

1. Line up the seams on the rain cover with the seams on the hood. Open the window using the Velcro to ensure sufficient ventilation.

Carry Cot Apron

2. Secure the carry cot apron in place by fastening the poppers on each side.

Foot Warmer

3. Attach the bottom part of the foot warmer to the underside of the seat unit frame. Then, wrap the top part of the foot warmer under and over the bumper bar and secure in place using the poppers.

Changing Bag

4.

CARE AND MAINTENANCE

- Always check the stroller for any wear or damage.
- Storage – Store the stroller in a dry place, do not store in a damp or hot environment. Never leave in sunlight for prolonged periods.
- Chassis – Regularly lubricate all moving parts. Polish metal with a clean dry cloth.
- Wheels – Use a soft brush or cloth.
- Seat Unit/Carry cot outer/Removable Canopy and Shopping basket – Sponge clean with warm soapy water. Rinse with clean water to avoid staining. Dry naturally away from direct heat and prolonged sunlight. Do not use strong detergents or bleach.
- Carry cot mattress removable cover:



Dimensions

Open :

L: 61cm H: 104cm D: 95cm

Closed :

L: 61cm H: 30cm D: 77cm



PRODUCT WARRANTY

Please retain your receipt and keep it with this User Guide for future reference. (Failure to product proof of purchase could affect warranty)

Don't forget to register online today at:
<https://au.icklebubba.com/pages/warranty-information>

Register within 28 days of purchase for
a FREE 4 Year Extended Warranty.

To activate your FREE 4 year warranty, register online and keep your proof of purchase for any future claim. If you register within 28 days of purchase we will extend your standard warranty to 4 years from the date of purchase at no extra cost.

Warranty Team

Our goods come with guarantees that cannot be excluded under the Australian Consumer Law. You are entitled to a replacement or refund for a major failure and compensation for any other reasonably foreseeable loss or damage. You are also entitled to have the goods repaired or replaced if the goods fail to be of acceptable quality and the failure does not amount to a major failure.

- Stroller frame - 2 years from purchase date
- Wheels & Fabric - 1 year from purchase date

What Your Warranty Does Not Cover

Damage caused by normal wear and tear, accidental damage, improper use and damage caused by negligence, misuse and by not following the maintenance instructions. The warranty is not valid in the following situations:

- In case of use or purpose other than described in the instruction manual.
- If the product is submitted for repair through a retailer/ distributor that is not approved or authorised by us.
- If repairs have been carried out by third parties or a retailer who it not authorised or approved by us.
- If you have purchased your product over the internet from an unauthorised reseller.

Where Your Warranty Applies

Your warranty applies in the country of purchase only.
The warranty applied to the first owner and is non transferrable.

What to Do in Case of Defects

If you feel there is a problem with your Ickle Bubba product then please contact your original approved reseller.

Ickle Bubba Ltd, 10-12 Flushcombe Rd, Blackstown, NSW 2148
Email Contact : sales@rogerarmstrong.com.au
Telephone Contact Number : (03) 9584 2066

CUSTOMER SERVICE

01554 707022

09:00 - 17:00

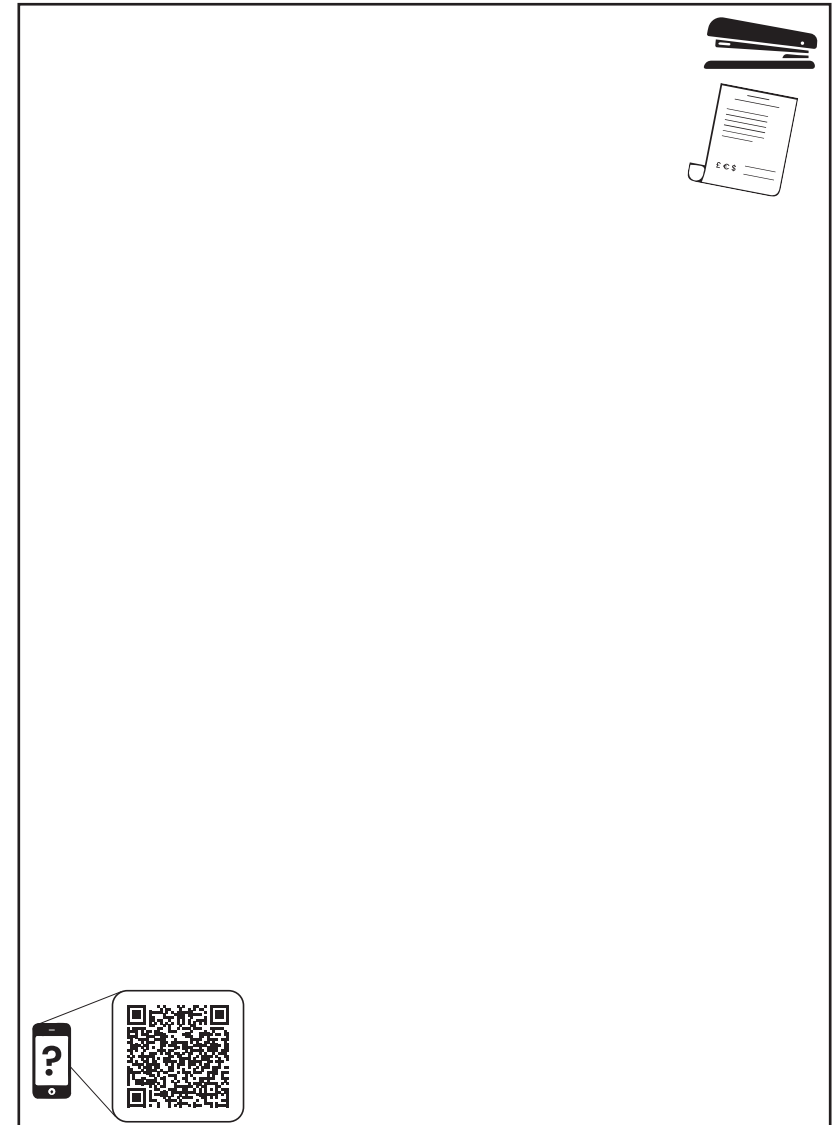
Monday - Thursday

09:00 - 16:00

Friday

*You will need the original order number as proof of purchase

Please retain your original receipt of purchase and keep with this instruction booklet





contact@icklebubba.com

Atlantic House, Unit 2, Atlantic Close, Swansea, SA7 9FJ

Ickle Bubba Ltd, 10-12 Flushcombe Rd, Blackstown, NSW 2148

www.icklebubba.com