



Minipex

APEX LOCATOR

25 National Patents 8 Invention Patents



Scan and Login website for more information

Real convenience is anywhere at anytime

Mini
slim but heavy.

Visible
Oval-shaped,
better visibility

Distinguishable
Alarm by different buzzing,
easily distinguish



Accurate & Sensitive

Clinical data matching,
The accuracy rate has been improved to

Upgraded chip, real-time response, the sensitivity has been improved double. Innovative algorithm, multi-frequency measurement, and anti-interference.

97.71%



The accuracy contrast among woodpecker, American brand d and Japanese brand s

Method: Prepare 97 teeth of pulpitis and apical parodontitis, total 175 root canals. After finishing the initial root canal preparation, use the Apex Locators of Woodpecker, American brand D and Japanese brand S separately to measure the length of root canals, and combine the X-Ray film to test, finally compare the accuracy of the three types of Apex Locators.

Group	QTY of tested root canal	QTY of accurate results	Accuracy Rate
Woodpecker	175	171	97.71%
American brand D	175	171	97.71%
Japanese brand S	175	171	97.71%

Cited Reference: Gu Yuan Ping
In vivo accuracy of three electronic root canal length measurement devices: Dentaport ZX, Woodpex III and ProPex II

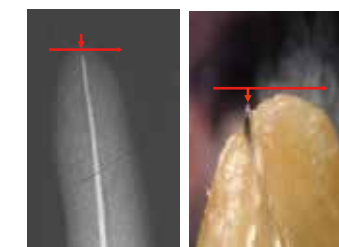
Clinical Tips

- Use a rubber dam during the endodontic procedure
- Don't let the file or the lip clip come into contact with metallic dental structures
- Root fractures, perforations, deep caries & large lateral canals might give inaccurate results
- Moisten an extremely dry canal with saline to help provide a stable reading.
- Teeth with large apices might give false readings
- Dry the access cavity with a cotton pellet/air-blower.
- Use a file size adapted to the root canal diameter
- An apex locator will not work in an obliterated canal

The defect of traditional measurement method

1. Disadvantage of handing method

Based on hand feeling and patient's pain, dentists decide whether the measuring tool reaches apical foramen, with high subjectivity and low accuracy. Foreign literature suggest that providing the range of error ± 0.5 mm, accuracy of handing method is only 42%.



X ray film shows under-filling. Actually it is over-filling

2. Disadvantage of X ray film

3D structure shooting at 2D plana, because of different angles, easily getting wrong data.

Apical foramen can't be shown in the X ray film, for over 80% apical foramens are in the side edge instead of apex.



The apical foramen is in the side edge. X ray shooting cause error length. The greater error, more serious over-filling



25 National Patents 8 Invention Patents

Guilin Woodpecker Medical Instrument Co., LTD.

Add: Information Industrial Park, National High-Tech Zone, Guilin, Guangxi, 541004 P. R. China
Tel: Europe Sales Dept.: +86-773-5873196, +86-773-2125222
North America, South America & Oceania Sales Dept.: +86-773-5873198, +86-773-2125123
Asia & Africa Sales Dept.: +86-773-5855350, +86-773-2125896
Fax: +86-773-5822450
E-mail: woodpecker@glwoodpecker.com, sales@glwoodpecker.com
Web: http://www.glwoodpecker.com

Distributed by:

