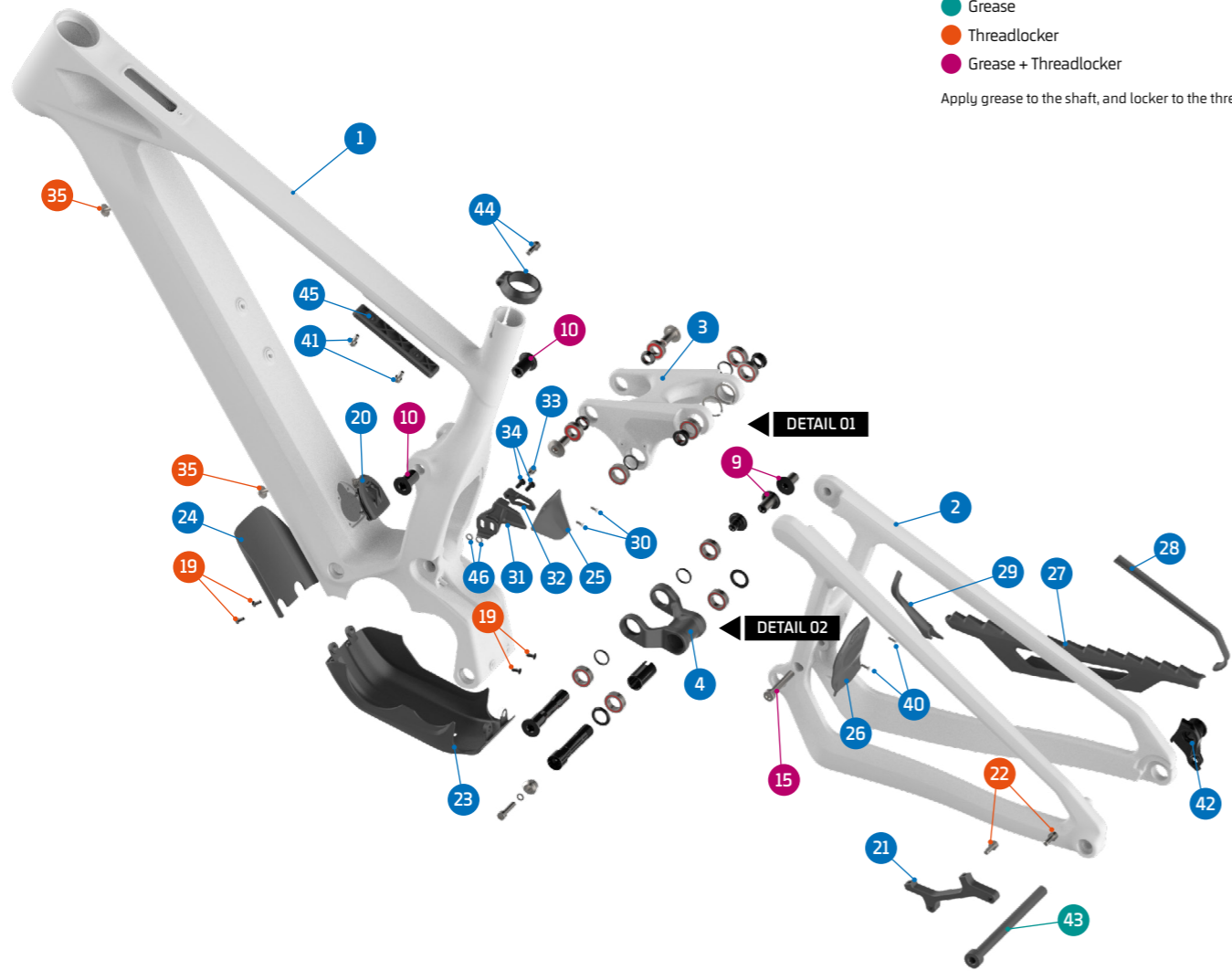
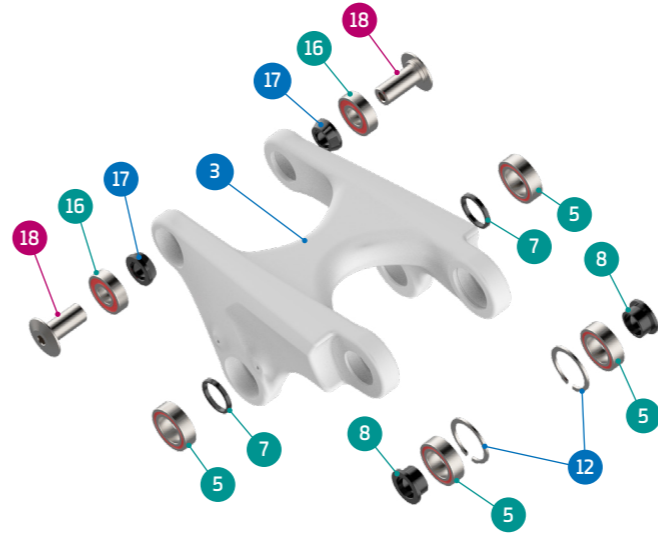




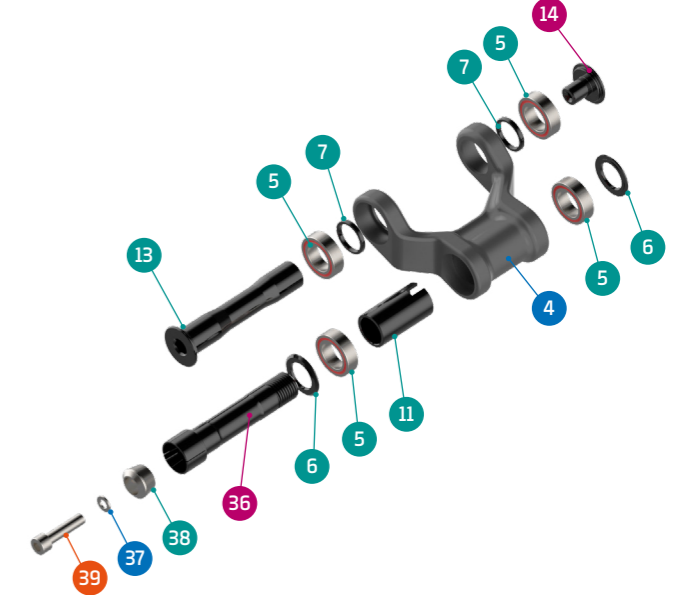
● Grease  
● Threadlocker  
● Grease + Threadlocker  
 Apply grease to the shaft, and locker to the threads



DETAIL 01



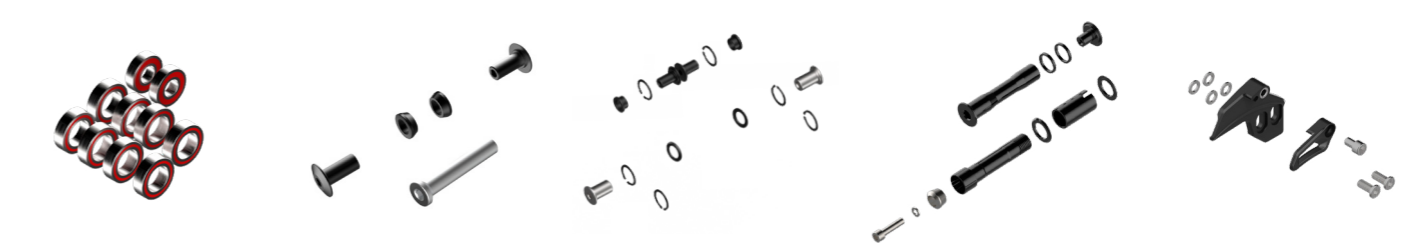
DETAIL 02



ITEM No.	DESCRIPTION	QTY.	PART NUMBER	TORQUE
1	FRONT TRIANGLE	1		
2	REAR TRIANGLE	1		
3	UPPER LINK	1		
4	LOWER LINK	1	099.24060	
5	BEARING, 24X15X7 3802-2RS	8	SET 1	
6	SPACER, 15x27x2	2	SET 4	
7	SPACER, 15x19x2.5t	4	SET 3/4	
8	UPPER LINK-RT SPACER	2	SET 3	
9	PIVOT AXLE, M12	2	SET 3	12 Nm
10	PIVOT AXLE, M15	2	SET 3	12 Nm
11	INNER LOWER LINK SPACER	1	SET 4	
12	C-RING	2	SET 3	
13	PIVOT AXLE, M10	1	SET 4	
14	AXLE NUT, M10	1	SET 4	12 Nm
15	SHOCK BOLT	1	SET 2	8 Nm
16	BEARING, 10x22x6 6900V-2RS	2	SET 1	
17	SPACER, 10x17x6	2	SET 2	
18	SHOCK BOLT	2	SET 2	8 Nm
19	SCREW BOLT, M4x10L-M-SB	4		2 Nm
20	CHARGE PLUG SET	1	099.24064	
21	DISC ADAPTOR	1	SET 6	
22	SCREW BOLT, M6x15L-P-S	2	SET 6	8 Nm
23	MOTOR COVER	1	099.24065	

ITEM No.	DESCRIPTION	QTY.	PART NUMBER	TORQUE
24	DT PROTECTOR	1	099.24066	
25	FT SHOCK FENDER	1	099.24067	
26	RT SHOCK FENDER	1	099.24068	
27	CS PROTECTOR	1	099.24069	
28	SS PROTECTOR	1	099.24070	
29	YOKE PROTECTOR	1	099.24071	
30	SCREW BOLT, M3x8L-M-SB	2	099.20068	1,5 Nm
31	CHAIN GUIDE, BASE	1	SET 5	
32	CHAIN GUIDE, OUTER	1	SET 5	
33	SCREW BOLT, M5x8L-P-SB	1	SET 5	
34	SCREW BOLT, M5x12L-SP	2	SET 5	
35	BATTERY SCREW BOLT, M5x10L-CS	2	SET 7	4 Nm
36	MAIN AXLE	1	SET 4	12 Nm
37	SPACER	1	SET 4	
38	TAPER NUT	1	SET 4	
39	SCREW BOLT, M6x25L-P-S	1	SET 4	8 Nm
40	SCREW BOLT, M3x10L-M-SB	2		1,5 Nm
41	SCREW BOLT, M5x10L-P-SB	2		3 Nm
42	HANGER	1	SRAM UDH	
43	REAR AXLE	1	112.90027	
44	SEAT CLAMP	1	020.24900	5-6 Nm
45	FIDLOCK COVER	1	099.22040	
46	WASHER, 5x9x1t	2		

SET 1	SET 2	SET 3	SET 4	SET 5
ZERO BEARING KIT 26	SHOCK HARDWARE KIT 14	UPPER LINK KIT 30	LOWER LINK KIT 36	CHAIN GUIDE PLATE + BOLTS



\* For kit installation manual click on icon

PART NUMBER	DESCRIPTION	COMPONENTS
099.22101	SET 1: ZERO BEARING KIT 26	BEARING 3802-2RS, 24x15x7 (x8) / BEARING 6900V-2RS, 10x22x6 (x2)
099.21200	SET 2: SHOCK HARDWARE KIT 14	SPACER, 10x17x6 (x2) / SHOCK BOLT (x2) / SHOCK BOLT (x1)
099.22300	SET 3: UPPER LINK KIT 30	SPACER, 15x19x2.5T (x2) / UPPER LINK-RT SPACER (x2) / PIVOT AXLE, M12 (x2) / PIVOT AXLE, M15 (x2) / C-RING (x6)
099.24404	SET 4: LOWER LINK KIT 36	SPACER, 15x27x2 (x2) / SPACER, 15x19x2.5t (x2) / INNER LOWER LINK SPACER (x1) / PIVOT AXLE, M10 (x1) / AXLE NUT, M10 (x1) / MAIL AXLE (x1) / SPACER (x1) / TAPER NUT (x1) / SCREW BOLT (x1)
099.24018	SET 5: CHAIN GUIDE PLATE + BOLTS	CHAIN GUIDE BASE (x1) / CHAIN GUIDE OUTER PLATE (x1) / SCREW BOLT, M5x12L (x2) / WASHER (x4) / SCREW BOLT, M5x8-P (x1)
099.22031	SET 6: DISC ADAPTOR KIT	DISC ADAPTOR (x1) / SCREW BOLT (x2)
099.24072	SET 7: BATTERY BOLTS SET	BATTERY SCREW BOLT (x2)