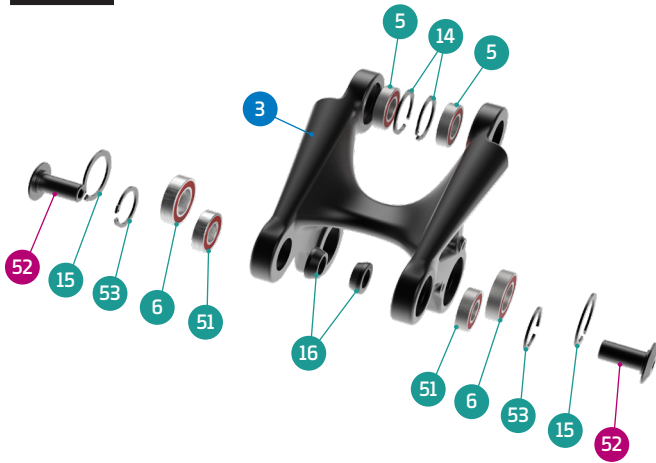


DETAIL 01

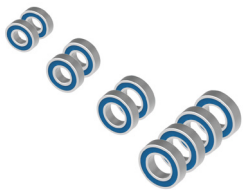


DETAIL 02



SET 1

ZERO BEARING KIT 22



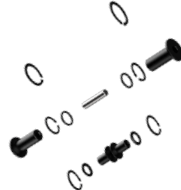
SET 2

SHOCK HARDWARE KIT 13



SET 3

UPPER LINK KIT 27



SET 4

LOWER LINK KIT 24



SET 7

CHAIN GUIDE PLATE



PART NUMBER	DESCRIPTION	COMPONENTS
099.20103	SET 1: ZERO BEARING KIT 22	BEARING 6901V-2RS, 12X24X6 (x2) / BEARING 6902V-2RS, 28x15x7 (x2) / BEARING 6903V-2RS, 30x17x7 (x4) / BEARING 6900V-2RS, 10x22x6 (x2)
099.20201	SET 2: SHOCK HARDWARE KIT 13	SHOCK BOLT (x2) / SPACER, 10x17x6 (x2) / LOWER LINK SHOCK BOLT (x1)
099.20302	SET 3: UPPER LINK KIT 27	C-RING (x2), C-RING (x2), PIVOT AXLE, M12 (x2), M8 THREAD AXLE (x1), LINK AXLE (x2), SPACER, 15x19x2t, (x2), SPACER, 3MM (x2), C-RING (x2)
099.20401	SET 4: LOWER LINK KIT	SPACER, 15x27x2 (x4), MAIN PIVOT AXLE, 17X60 (x2), SPACER, 17x22x30L (x2), SCREW BOLT (x2), TAPER NUT (x2), SPACER (x2)
099.20079	SET 6: MOTOR BOLTS SET	MOTOR BOLT (x5), MOTOR BOLT (x1)
099.20081	SET 7: CHAIN GUIDE PLATE + BOLTS	CHAIN G. BACK SLIDER (x1), CHAIN GUIDE PLATE (x1), SCREW BOLT (x2)
099.20080	SET 8: MOTOR SPACERS	MOTOR SPACER 6.8MM (x1), MOTOR SPACER 16.8MM (x1), MOTOR SPACER 4MM (x1)
989.20022	POLYESTER SLEEVE. HOSE PROTECTOR IM	
099.21012	LOWER SHOCK BOLT - STEEL	
099.18012	REAR DISC MOUNT 203MM	
099.00055	HANGER M068 + NUT (2020/2021)	HANGER (x1), HANGER NUT (x1)