

**PREVENT YOUNG CHILDREN FROM DROWNING**

- Drowning can occur in as little as 2 inches of water and it occurs silently and very quickly. Always designate an adult to be accountable for watching children who are in or near the pool. This adult is the assigned Water Watcher and should always be wearing the provided Water Watcher tag. Download and print additional Water Watcher tags at <minnidip.com>.
- The Water Watcher must keep children in direct line of sight, stay close, and constantly supervise when they are in or near pool, even during filling and draining of the pool as it still poses a risk of drowning. Do not remove any safety barriers until the pool is completely empty and stowed away.
- If designated Water Watcher steps away from pool area, a new adult must be designated to take over the duties.
- Always completely empty and store pool before discontinuing constant supervision of children and before removing any safety barriers.
- Always keep unsupervised children from accessing the pool. Install fencing or other approved barriers around all sides of pool. State or local laws and/or codes may require fencing or other approved barriers around pool. Research local regulations before setting up pool. Please refer to CPSC Pub. No. 362. "Safety Barrier Guidelines for Residential Pools" for a list of barrier recommendations and guidelines at <www.poolsafely.gov>.
- When searching for a missing child, always check the pool first even if you believe the child or pet is in the house.
- When pool is not in use, remove all floats and any toys or similar items from the pool that might attract a child to want to enter the pool.
- Position furniture and any similar objects (such as tables, chairs, floats, etc) away from pool to prevent children from gaining access to the pool by climbing on them.
- After using pool, remove water to a level of 1/2 in. (1 cm) or less.

**DIVING RISK**

- Do not dive into this pool. Diving into shallow water can result in a broken neck, paralysis, or death.

**ELECTROCUTION RISK**

- Keep ALL electrical lines, speakers, radios and similar electrical appliances far away from the pool at all times.
- Do not place pool under or near electrical lines running overhead or near electrical outlets.

**FIRST AID AND EMERGENCY PREPAREDNESS**

- Keep a list of emergency numbers and working phone near the pool at all times.
- In the event of an emergency, immediate use of CPR can save a life. In order to respond to an emergency, become certified in cardiopulmonary resuscitation (CPR) and keep CPR instructions near pool at all times.

**SET-UP SAFETY**

- Only set up the pool on ground that is absolutely flat, firm and level, as well as clear of twigs, rocks or other objects that may puncture the pool liner or cause injury.
- Never set up the pool on an inclined surface or slope or on soft or loose soil conditions (such as sand or mud) because it can cause pool collapse, resulting in property damage and bodily injury.
- Never set up the pool on an elevated surface such as a deck, platform or balcony, which may collapse under the weight of the filled pool.
- Move the boxed product to the selected site before inflating. Never inflate the product and drag it along the ground which may result in damage. Prior to inflation, inspect for any rips, tears or punctures. Do not use a possibly damaged product.

- Pool should only be set up in compliance with local safety and building codes. Follow inflation instructions listed on inside of the manual.

**GENERAL SAFETY DURING USE**

- Keep pool water fresh, clean and hygienic to prevent illness.
- Keep the pool floor visible at all times and water clear of obstructions to floor visibility.
- Do not straddle, lean, or apply pressure on the inflatable wall as flooding or injury could occur.
- Remove all hard, sharp and loose objects before entering the pool to prevent puncturing the inflatable wall.
- Properly maintain pool to prevent damage beyond normal wear and deterioration. Deterioration can lead to pool failure which might cause large quantities of water to release from the pool, causing property damage or bodily injury.
- Do not modify this product or use accessories not supplied by manufacturer.

**MAINTENANCE & DRAINAGE**

- Pool must be drained and disassemble by adults only.
  - Water can be easily contaminated. Change the water of the pool frequently (especially in hot weather) or when contamination is noticeable.
  - Check local regulations for specific directions regarding disposal of swimming pool water.
1. Dispose of pool water by first using the drain plug on the floor of the pool.
  2. Carefully open both flaps of the air valves on each ring and the pool will quickly deflate. Once water's almost emptied, slowly lift one side of the pool to drain the remaining water.
  3. Re-insert all valve caps after drainage to prep for storage.
  4. Be sure pool and all parts are completely dry before folding. Air dry in the sun or wipe with a dry cloth.
  5. To fold pool back up for storage, first lay pool flat in circular form. Fold it, with the air valves located at the point of the fold, into a half circle. Then fold the half circle lengthwise, over top itself, into a long strip. Next, starting at the end opposite of the air valves, fold the strip over in sections until reaching the end, pushing any remaining air out as it folds onto itself. Push down on folded pool to release any remaining air.
  5. Original package can be used for storage in dry place at room temperature. Extreme temperatures can result in temperature shock and can cause the pool to become defected.

**REPAIR PATCH**

A repair patch has been included with the product to repair small leaks and holes.

1. Locate the leak and completely deflate the product.
2. Thoroughly clean and dry the damaged surface and allow to completely dry for at least 10 minutes.
3. Place patch over leak or hole and apply pressure. Smooth out any air bubbles.
4. Wait for 20 minutes before re-inflating the pool.

Designed by Emily Vaca with love in Chicago, IL USA  
Made in Fuzhou, China

©2019 La Vaca Co. All rights reserved  
MINNIDIP™ is a trademark of La Vaca Co  
LA VACA™ is a trademark of Emily Vaca  
La Vaca Co. P.O. Box 221016 Chicago, IL 60622  
(800) 515-7028 • hello@minnidip.com  
MODEL NOs: 7106, 7113, 7120, 7137, 7144, 7151

**IMPORTANT SAFETY RULES**

**READ AND FOLLOW ALL SAFETY INFORMATION AND INSTRUCTIONS. KEEP FOR FUTURE REFERENCE. FAILURE TO FOLLOW THESE WARNINGS AND INSTRUCTIONS CAN RESULT IN SERIOUS INJURY OR DEATH TO USERS, ESPECIALLY CHILDREN.**

**⚠ WARNING ⚠**



**NO DIVING OR JUMPING**  
DIVING INTO SHALLOW WATER CAN RESULT IN A BROKEN NECK, PARALYSIS, OR DEATH. NO JUMPING INTO SHALLOW WATER.



**PREVENT DROWNING**  
ALWAYS CLOSELY WATCH CHILDREN WHO ARE IN OR ANYWHERE NEAR THIS POOL. CHILDREN UNDER 5 ARE AT HIGHEST RISK OF DROWNING. ALWAYS EMPTY POOL AFTER USE AND PREVENT ACCESS WHEN NOT IN USE. FOLLOW ALL SAFETY INSTRUCTIONS PROVIDED IN MANUAL.

CONFORMS TO THE REQUIREMENTS OF ASTM F2666  
DO NOT USE HIGH-PRESSURE PUMP TO INFLATE.  
DO NOT OVER-INFLATE.

**⚠ WARNING**  
THIS IS NOT A LIFESAVING DEVICE. DO NOT LEAVE CHILD UNATTENDED WHILE DEVICE IS IN USE. (ASTM F963)

A  
STEP-BY-STEP  
GUIDE TO

**GETTING YOUR  
@MINNIDIP PARTY  
STARTED!**

THE MINNIDIP™ MANUAL  
of TIPS & WARNINGS

MINNIDIP.COM



**MINNIDIP™**

THE FIRST DESIGNER INFLATABLE POOL

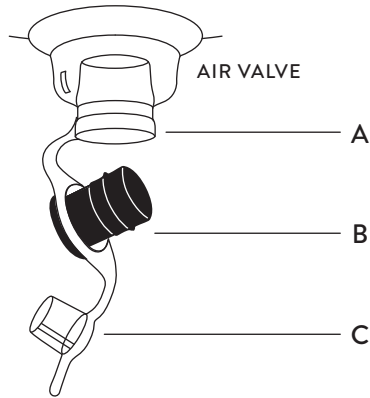
OH HELLO MINNIDIPPER!

LET'S GO MINNIDIPPING!

## CARING FOR YOUR MINNIDIP™

When not in use, ALWAYS empty water and store your MINNIDIP™ out of direct sunlight and in a shaded location to prevent fading caused by UV rays. NEVER leave filled with water to prevent drowning hazards and unhealthy water contamination. Do not add chlorine or any chemicals to the water. Do not store in below-room-temperature conditions (for example, in non-heated garages during the winter), as it will compromise the vinyl seals and cause air leakage.

## MINNIDIP™ QUICK SET-UP



Set up time: 10 minutes excluding time to fill with water. Pool must be set up and assembled by adults only. Refer to back page for important safety instructions for set-up preparation and use.

### 1 OPEN BOTH FLAPS OF EACH OF THE 3 AIR VALVES

The air valves have two ports and a plug. The main port (A) is completely open, allowing air in and out quickly. The first flap (B) is a one-way valve that allows air in, but not out. The second flap (C) is a plug to secure air after fully inflated.

### 2 INFLATE: OPEN PORTS (A)

#### USING AN AIR PUMP\*

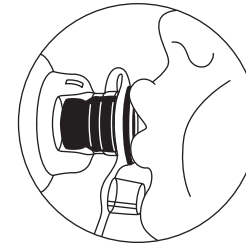
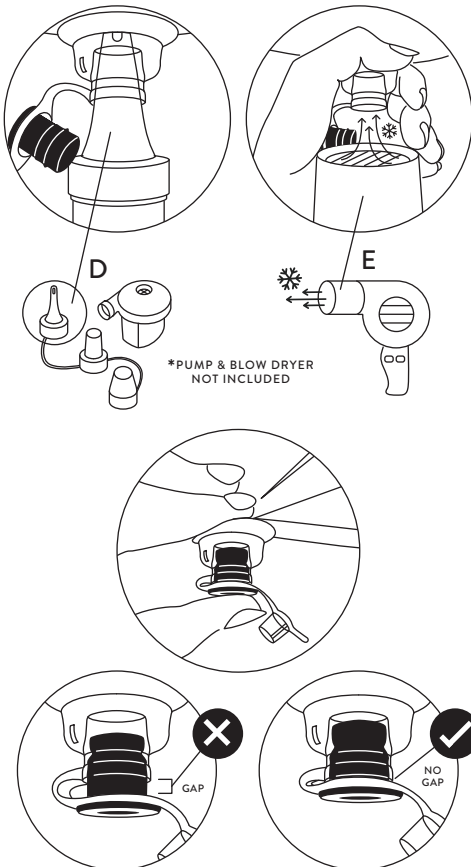
Start inflating the bottom ring first with the smallest air pump attachment (D) by fitting snugly into the open port. Fill as much as possible, then quickly plug with the first flap without letting too much air escape. Repeat on the middle ring, then the top.

#### USING A BLOW DRYER\*

Blow dryer MUST BE COOL TO THE TOUCH. Start inflating the bottom ring first by directing the air flow into the open port. The blow dryer mouth (E) will not fit directly into the open port, but you can direct air flow towards the opening. You can also wrap your hand around the blow dryer and open port to help direct air flow. Fill as much as possible, then quickly plug with the first flap without letting too much air escape. Repeat on the middle ring, then the top.

### 3 SECURE ONE-WAY VALVES (B)

Once the open port is plugged with the one-way valve, grip it between your thumb and index finger and push it securely until there is NO GAP between the valves. If you feel air escaping, make sure the black piece is fully inserted.



### 4 INFLATE: ONE-WAY VALVE (B)

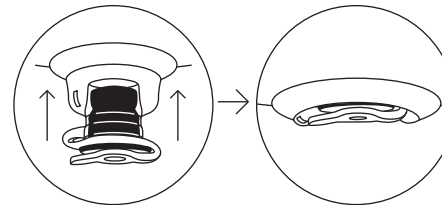
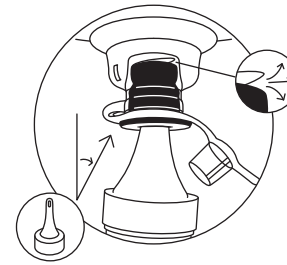
#### USING YOUR MOUTH (recommended)

Use your mouth to blow a few large breaths through this one-way valve (about 5-6 breaths) to fill it as much as possible to get the pool taut. This is an easy, and quicker, alternate to using an air pump attachment as your breath has more force and fills it quicker. Repeat on the middle ring, then the top.

#### USING AN AIR PUMP\*

Use the same air pump attachment and insert into the black port, angling the tip of the attachment towards the outer perimeter of the valve so that the one-way valve flap lifts slightly to allow air flow in. Repeat on the middle ring, then the top.

Once all rings are mostly filled, you may need to blow a little more air through each one-way valve for pool to appear firm. As you inflate, stretch the pool out to get air into the creases. Some wrinkles in the material will still exist even when pool is fully inflated. Do not over-inflate or attempt to remove every wrinkle.

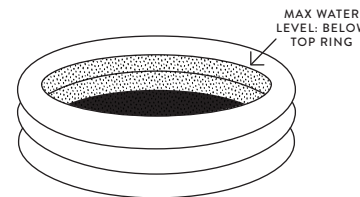


### 5 PLUG & SECURE VALVES (C)

Once each ring is inflated fully, plug with second flap (C). Then tuck each valve into pool so that it doesn't get knocked loose during use.

### 6 FILL WITH FRESH WATER

First, make sure drain plug is securely plugged on the bottom floor. Then, slowly fill with clean water to the max water level, marked as being below the top ring. Fill no more than 12 inches deep with water. Do not overfill the pool as doing so may result in pool wall collapse and flooding, causing safety issues and property damage.



### 7 ENJOY & SHARE!

Now it's time to dip in and enjoy!! And don't forget to share and tag your pool party photos:

@MINNIDIP  
#MINNIDIP



QUESTIONS? EMAIL US: [hello@minnidip.com](mailto:hello@minnidip.com)