

DISCOVER
HEADSETS



EHS Guide

For Wireless Headset Remote Operation

Wireless Headset EHS User Guide

Introduction

Electronic Hook Switch(EHS) provides a solution that enables remote operation of answer/end functions for wireless headsets with various phones, thus eliminating the need for a mechanical handset lifter.

Mobility

With an EHS solution you can roam within your premises and still do business on the spot. Wireless headsets with EHS functionality boost productivity as they provide the user with the ability to answer and end a call, while away from their desk.

EHS support the following phone system manufacturers:

Wireless Headset EHS Compatibility Table

| Phone Model | EHS Adapter | DHS Part No |
|---|--|--------------|
| AASTRA / MITEL 5360, 5370, 5370IP, 5380, 5380IP 6771, 6773IP, 6775IP, *6735i, *6737i, 6739i, *6753i, *6755i, *6757i, 6757iCT, 6771IP, 6773IP, 6775IP, 6865i, 6867i, 6869i, 7434IP, 7444IP | DS-DHSG Cable *Needs Aastra/Mitel EHS kit | DHS12 |
| ALCATEL-LUCENT 4028 EE, 4038 EE, 4068 EE IP Touch 4028, 4038, 4068, 8012,8028, 8088, 8068, 8078 IP8028, IP8038, IP8068 | MSH Adapter | DHS16 |
| AVAYA 1408, 1416, 1608, 1616, 1608i, 1616i, 1624, 2410, 4630, 5410, 6224D+M, 6416D+M, 9404, 9406, 9408, 9504, 9508, 9608, 9610, 9611, 9619, 9620, 9620L, 9621, 9630 9640, 9641, 9641G, 9650, 9670, J169, J179, J129 | AEI-II(Avaya) Adapter Kit | DHS13 |
| AVAYA 2420, 4610, 4620, 5420, 5610, 5620, 5621, 4610SW, 4620SW, 4621SW, 4622SW,4625SW, 4630SW | Avaya compatible EHS Cable | DHS23 |
| AVAYA-NORTEL 1120E, 1140E, 1150E, 1165E | Avaya compatible EHS Cable | DHS20 |
| CISCO 6911, 6945, 7821, 7841, 7861, 7942G , 7945G, 7962G, 7965G, 7975G, 7821, 7841, 7861, 8811, 8841, 8845, 8851, 8861, 8865 | HHC Adapter | DHS11 |
| CISCO (with USB Port) 8851, 8861, 8865, 8961, 9951, 9971, DX650, DX70, DX80 | HHC-2 Adapter | DHS20 |
| CISCO 8941, 8945, 8946, 8965, 8945G, 8965G | Cisco compatible EHS Cable | DHS24 |
| DIGIUM D40, D45, D50, D60, D70, D80 | Digium compatible EHS Cable | DHS14 |
| ERICSSON-LG LIP-9010, LIP-9020, LIP-9030, LIP-9040, LIP-9050 | LG EHS Adapter Needs Ericsson-LG EHSA Kit | DHS19 |
| FUNKWERK CS410, CS410-U, IP-S400, CS290-U, IP290 Plus | | DHS12 |
| GRANDSTREAM GXP1610, GXP1620, GXP1630, GXP1760, GXP2124, GXP2130, GXP2140, GXP2160, GXP2200 | Grandstream compatible EHS Cable | DHS21 |
| PANASONIC DT521, DT543, DT546 , HDV230, HDV330, HDV430, NT553, NT556, NT560, NT564, UT133, UT136, UT248, UT670 | Panasonic compatible EHS Cable | DHS10 |
| PANASONIC NT543 | Panasonic compatible EHS Cable | DHS22 |

Wireless Headset EHS Compatibility Table

| Phone Model | EHS Adapter | DHS Part No |
|---|---|--------------|
| POLYCOM IP301, IP320, IP321, IP330, IP331, IP335, IP430, IP435, IP450, IP501, IP550, IP560, IP601, IP650, IP670, VVX300, VVX301, VVX310, VVX311, VVX400, VVX401, VVX410, VVX411, VVX500, VVX501, VVX600, VVX601, VVX1500, VVX1501 | Polycom compatible EHS Cable | DHS14 |
| SAMSUNG SMT-i16010, SMT-i6011, SMT-i6021 | Samsung compatible EHS Cable | DHS20 |
| SHORETEL 420, 485, 212K, 565G, 655G, IP100, IP230, IP230G, IP265, IP480, IP480G, IP485G, IP530, IP560, IP560G, IP565G, IP655 | Adapter Kit | DHS17 |
| SIEMENS/UNIFY OpenStage 30/40/60/80, Openscape IP 35G/55G OptiPoint Basic/Std/Adv/Eco 410/420/500/600 | DS-DHSG Cable | DHS12 |
| SNOM *300, *320, *360, *370, *720, D725, *760, *820, *821, *870 | DS-Gender *Needs SNOM EHS Adapter | DHS15 |
| TIPTTEL 85 System, 274, 275 | Tiptel compatible EHS Cable | DHS12 |
| TOSHIBA DP5022-SD, DP5022-SDM, DP5032-SD, DP5118-DP, DP5122-SD, DP5130-FSDL, DP5130-SDL, DP5132-SD, IP5022-SD, IP5122-SD, IP5122-SDC, IP5131-SDL, IP5132-SD IPT2008-SDL, IPT2010-SD, IPT2020-SD | SHR (Toshiba)Adapter Kit | DHS17 |
| T-SYSTEMS F20, F30, F40, F50, F630, F640, F660, F680 | T-Systems compatible EHS Cable | DHS12 |
| T-SYSTEMS 140IP, 141, 150IP, 151, 160IP | T-Systems compatible EHS Cable | DHS16 |
| YEALINK *T20X, *T26P, *T27G, *T27P, *T28P, *T29G, *T38G, *T40G, *T40P, *T41S, *T41P, *T42G, *T42S, *T46G, *T46S, * T48G, * T48S | DS-Gender *Needs Yealink EHS Adapter | DHS15 |
| SMART PHONE Galaxy & iPhone Series | SmartPhone EHS Adapter | DHS18 |

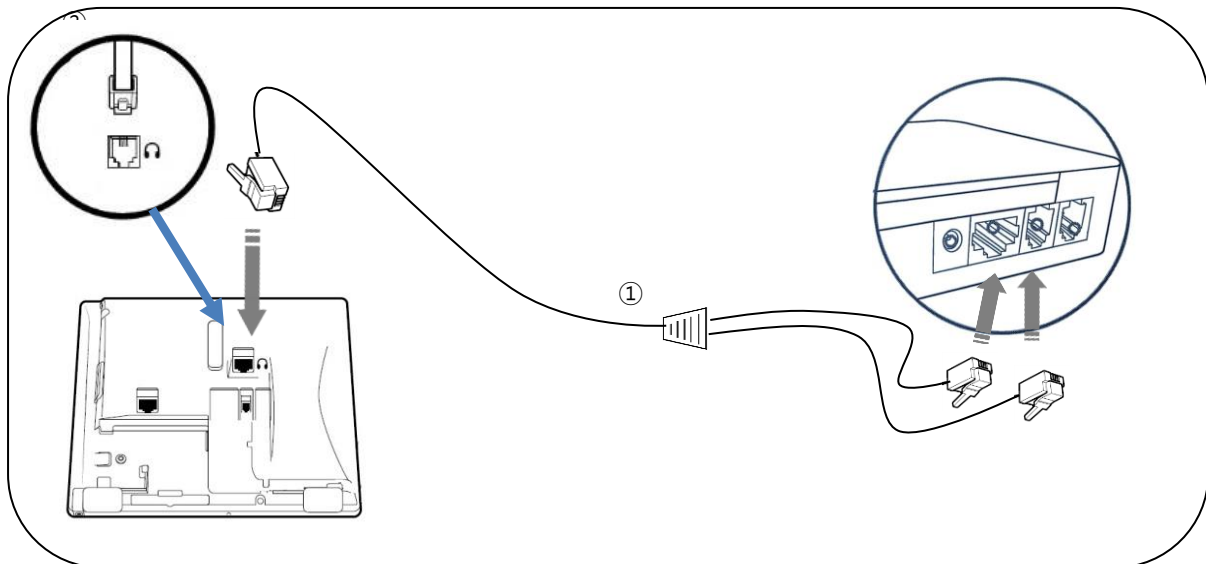
Aastra/Mitel EHS setup guide

| Aastra/Mitel | Phones |
|---|---|
|  | 6771/6773ip/6775ip 7434ip/7444ip 5370,5370ip 5380/5380ip |



| |
|---|
|  |
| DHS12 |

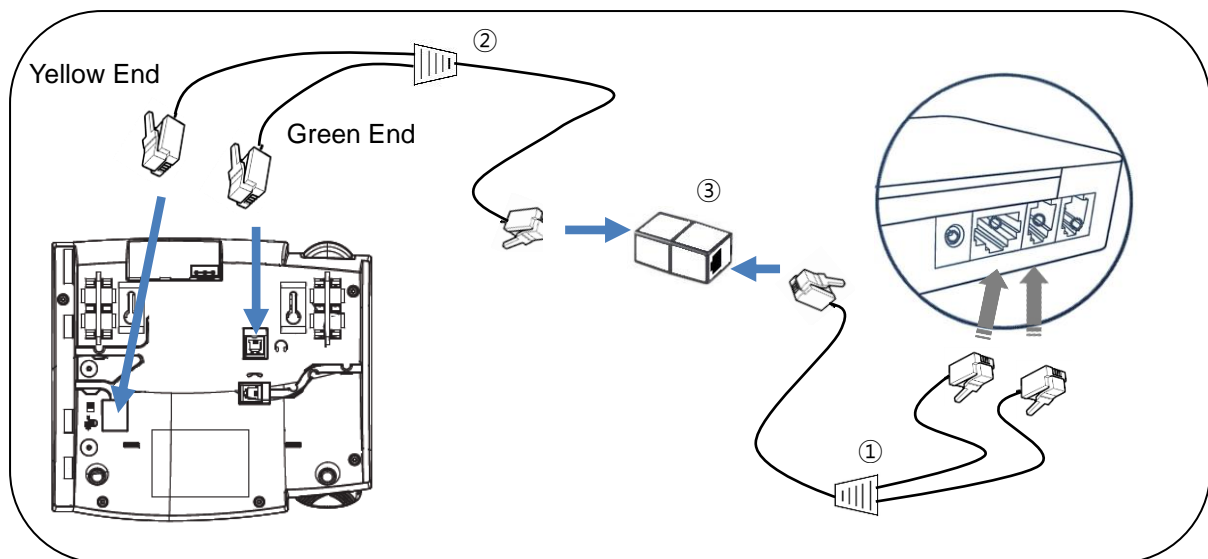
① Connection Diagram



① DS-DHSG cable(EHS-3) : RJ-45(8P8C) to RJ-45(8P8C) and RJ-9(4P4C)



Connection Diagram



Note : Aastra DHSG cable kit is available from your Aastra reseller

- ① DS-DHSG cable(DHS12) : RJ-45(8P8C) to RJ-45(8P8C) and RJ-9(4P4C)
- ② Aastra DHSG cable
- ③ RJ-45 Coupler

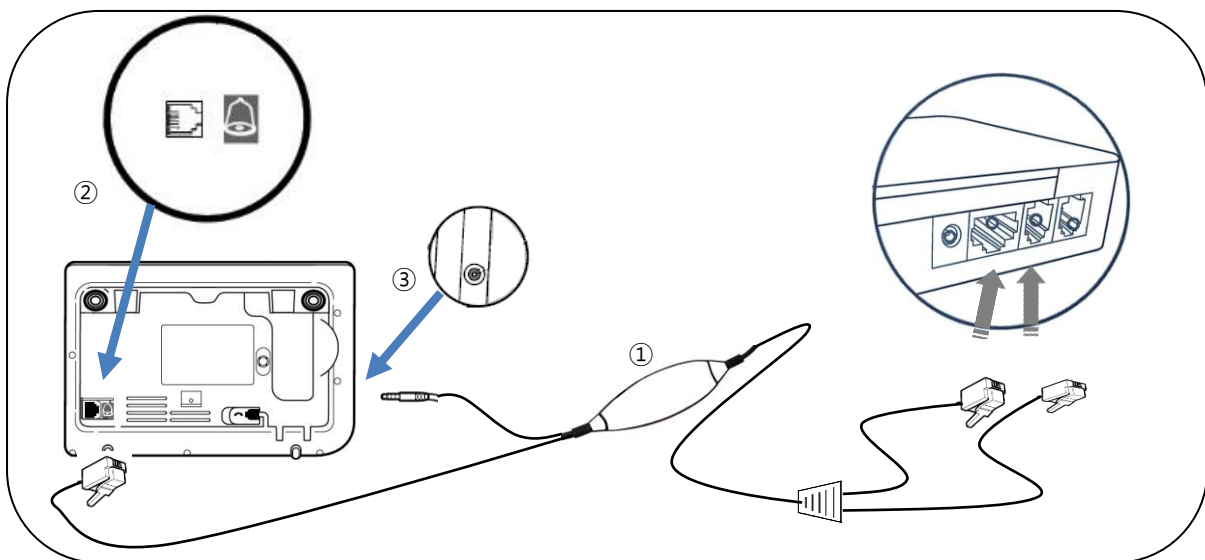
Note :

1. Audio mode needs to be set to "Headset/Speaker" mode manually.
(Options->Preferences->Set Audio->Audio Mode->Headset/Speaker)
2. For full headset functionality, disable the "Goodbye Key Cancels Incoming Call" parameter.
Aastra Web UI: Basic Settings->Preferences->General

Alcatel EHS Setup guide



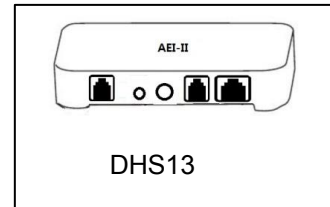
Connection Diagram



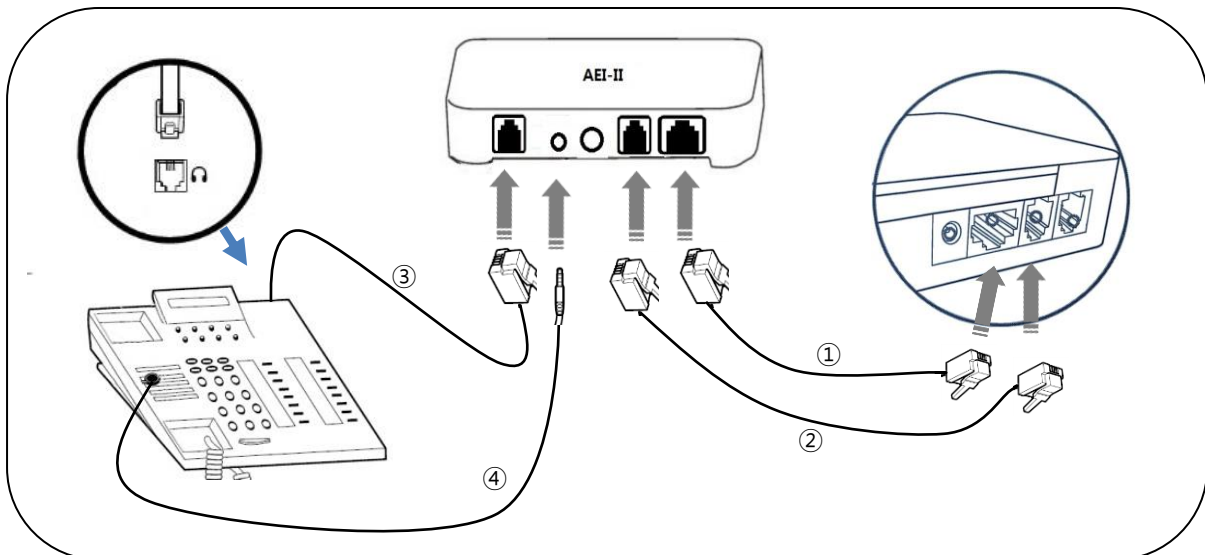
- ① MSH cable(DHS16) : RJ-12(6P6C) and 3.5Ø plug to RJ-45(8P8C) and RJ-9(4P4C)
- ② EHS Port
- ③ Audio Port

Avaya EHS Setup guide

| Avaya | Phones | | |
|---|---------|---------|------|
|  | 1408 | 1416 | 1608 |
| | 1616 | 2410 | 5410 |
| | 6224D+M | 6416D+M | |
| | 9404 | 9408 | 9504 |
| | 9508 | 9608 | 9610 |
| | 9611 | 9620 | 9621 |
| | 9630 | 9640 | 9641 |
| | 9650 | 9570 | |



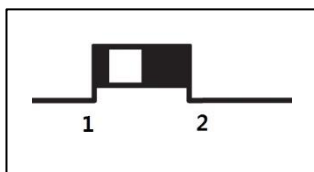
Connection Diagram



- ① : Power cable (RJ-45 to RJ-12)
- ② : Telephone cord (RJ-9 to RJ-9) Cable length : 600mm
- ③ : Telephone cord (RJ-9 to RJ-9) Cable length : 300mm
- ④ : External Microphone for ring detection

Position of Telephone compatibility Switch : Set to '1'

Compatibility switch is located on left side of the base unit.

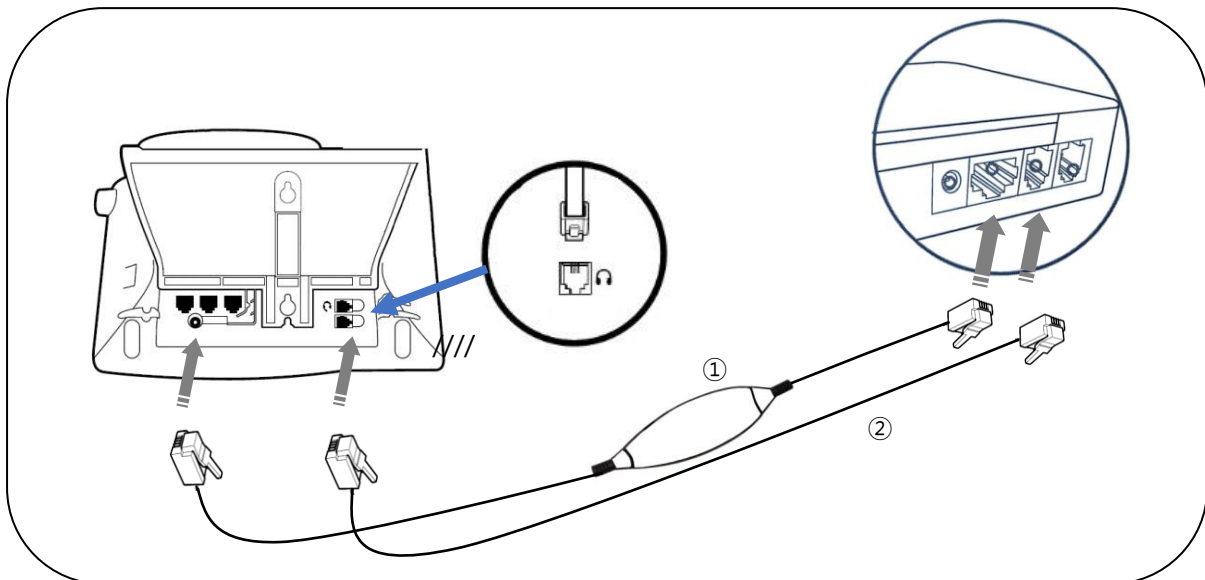


Cisco EHS Setup guide

| Cisco | Phones |
|---|----------------|
|  | 6945 |
| | 7942G 7945G |
| | 7962G 7965G |
| | 7975G |
| | 7821/7841/7861 |
| | 8811/8841/8845 |
| | 8851/8861/8865 |



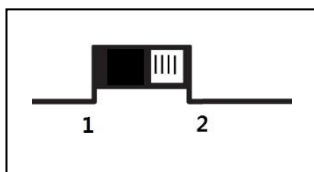
Connection Diagram



- ① : EHS Adapter (DHS11) RJ-45 to RJ-12
- ② : Telephone cord (RJ-9 to RJ-9) Cable length : 600mm

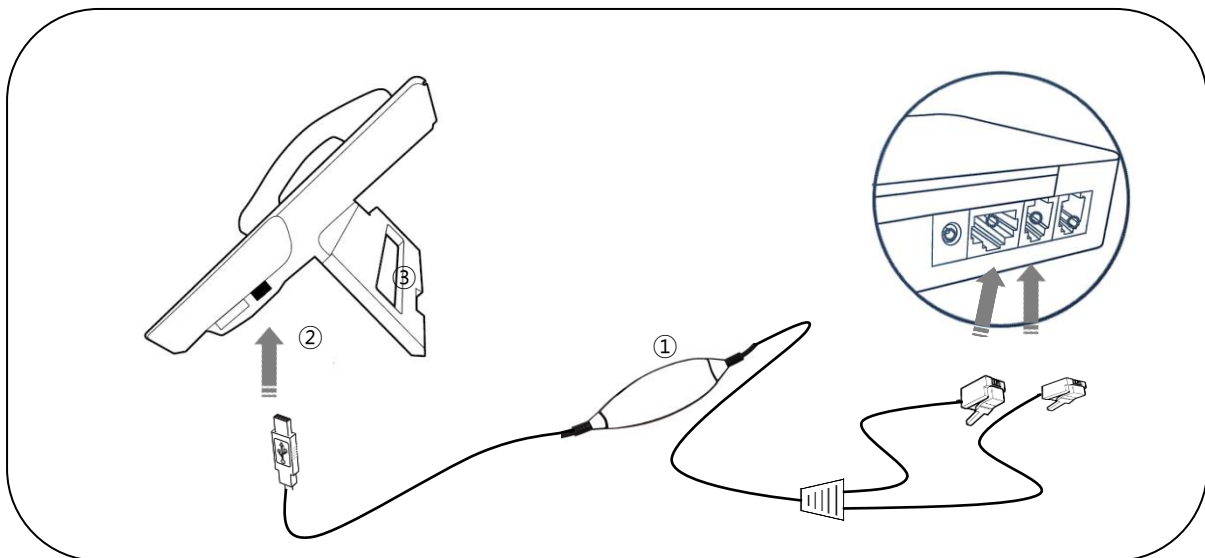
Note : Make sure that Electronic Hook switch should be enabled in Cisco Unified Communications Manager Administration.

Position of Telephone compatibility Switch : Set to '2'



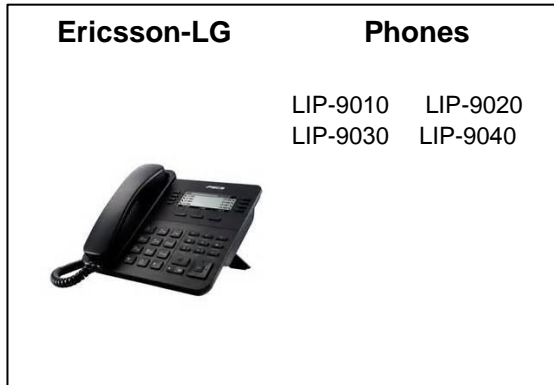


Connection Diagram



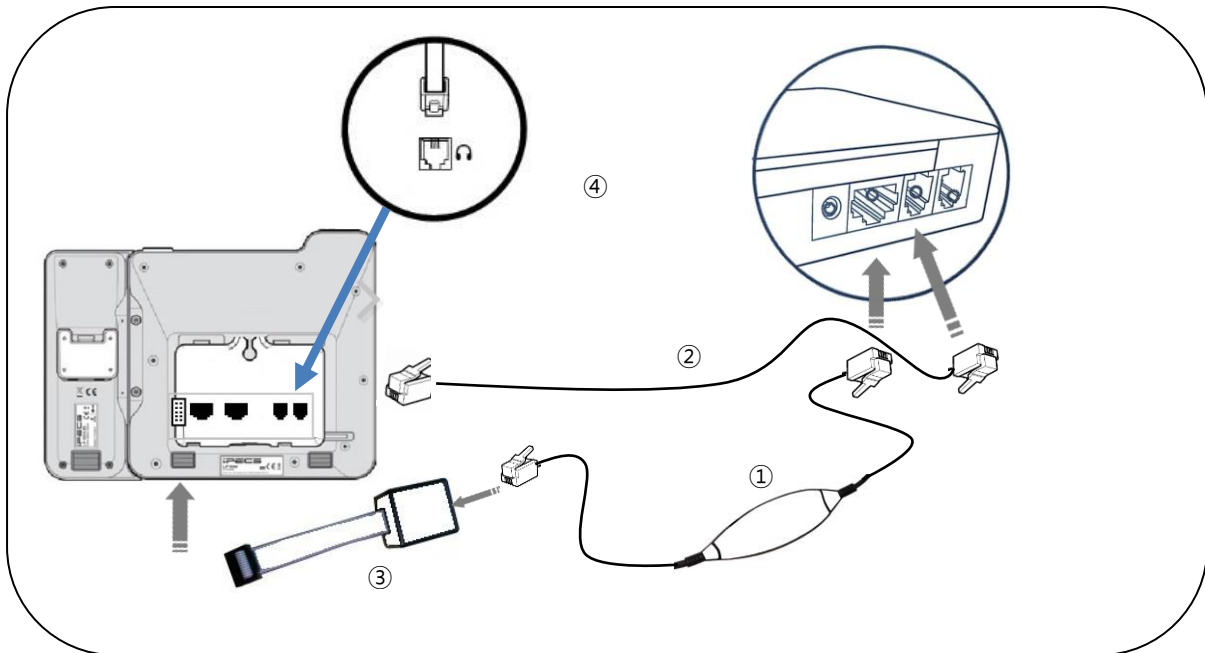
- ① : HHC EHS Adapter (DHS20) RJ-45(8P8c) and RJ-9(4P4C) to USB A-type Plug
- ② : USB Port(A-type Female)

Ericsson-LG EHS Setup guide



Need Ericsson-LG EHS Kit

Connection Diagram

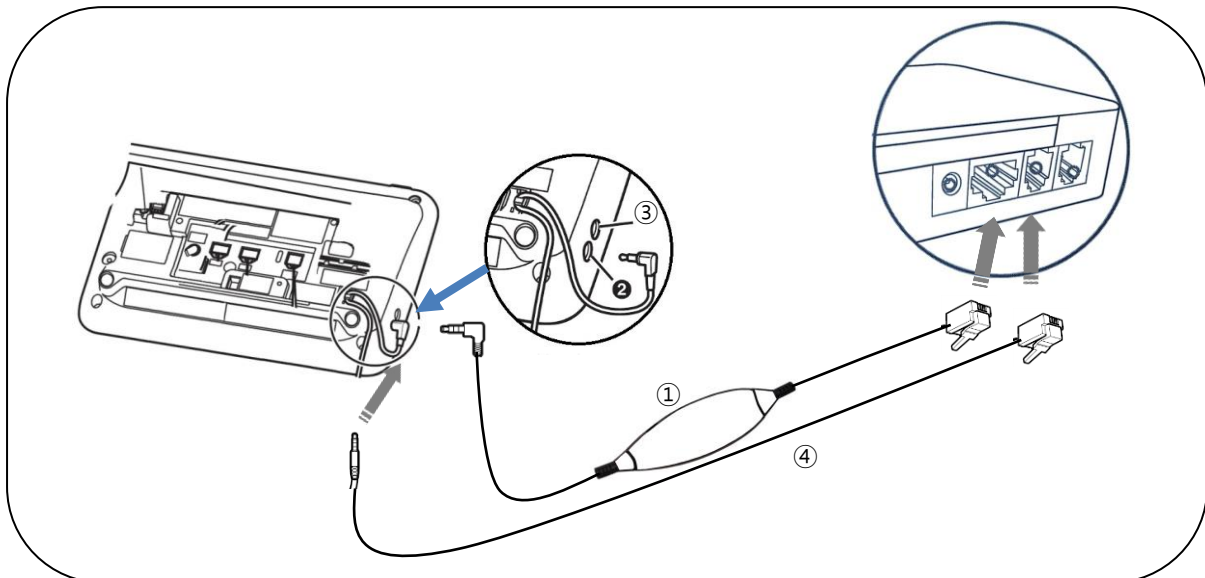


- ① LG EHS Adapter (DHS19) : RJ-45(8P8C) to RJ-45(8P8C)
- ② Headset Port
- ③ EHS Adapter : supplied from Ericsson-LG reseller
- ④ Audio cables : RJ-9(4P4C) to RJ-9(4P4C)

Panasonic EHS setup guide




Connection Diagram



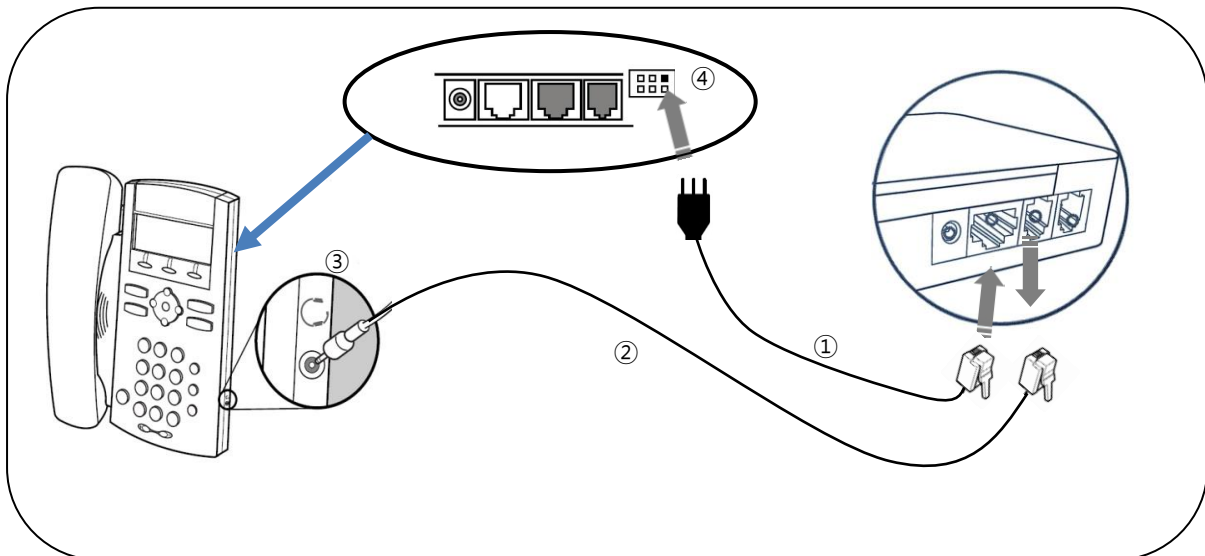
- ① Panasonic EHS Adapter (DHS10) : RJ-45(8P8c) to 3.5ØPlug (3 poles)
- ② Headset Port
- ③ EHS Port
- ④ Audio cables : RJ-9(4P4C) to 3.5ØPlug (3 poles)

Polycom EHS Setup guide

| Polycom | Phones | |
|---|----------|---------|
|  | IP 320 | IP 321 |
| | IP 330 | IP 331 |
| | IP 335 | IP 435 |
| | IP 450 | IP 550 |
| | IP 560 | IP 650 |
| | IP 670 | |
| | VVX 300 | VVX 310 |
| | VVX 400 | VVX 410 |
| | VVX 500 | VVX 600 |
| | VVX 1500 | |

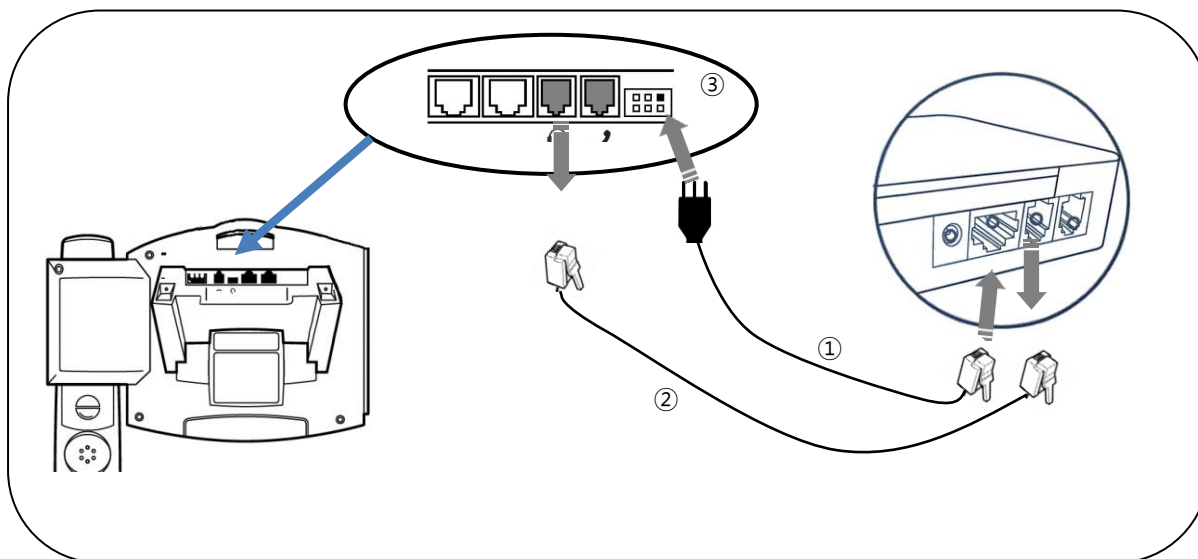


Connection Diagram



- ① Polycom EHS Adapter (DHS14) : RJ-45(8P8c) to 5-Pin Plug
- ② Audio cables : RJ-9(4P4C) to 2.5ØPlug (3 poles)
- ③ Headset Port
- ④ EHS Port

Connection Diagram



- ① Polycom EHS Adapter (DHS14) : RJ-45(8P8c) to 5-Pin Plug
- ② Audio cables : RJ-9(4P4C) to RJ-9(4P4C)
- ③ EHS Port

Note 1: Phone must be running SIP application 3.1 or higher and BootROM 4.1.0 or later.

Note 2: Phone must be running SIP application 3.0.2 or higher and BootROM 4.1.0 or later.

Note 3: Phone must be running SIP application 3.1.0 Rev C or higher and BootROM 4.1.0 or later.

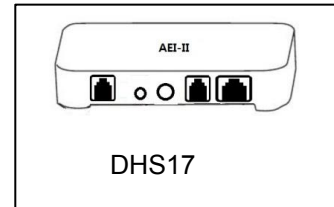
Note 4: 2.5mm headset port connector requires Audio cable.

Instruction

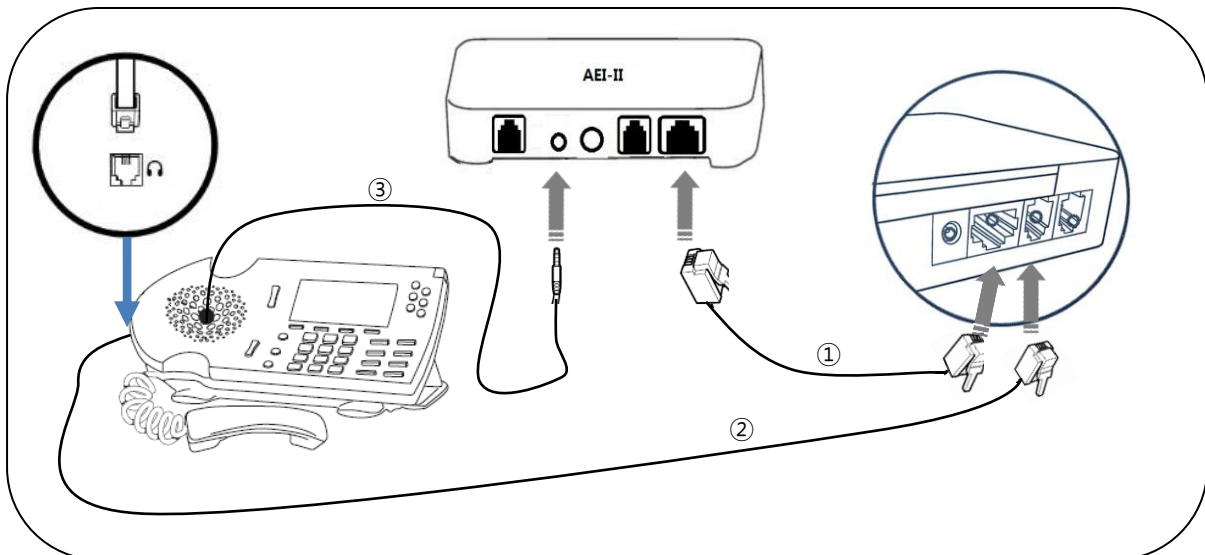
Access your Polycom phone menu and change the headset settings to "Jabra Mode" or "Jabra DHSG" based on the manufacturer's instructions for your specific model. Depending on your phone model, you may need to complete this step after connecting the EHS adapter. Typically, changing the settings requires that you access the "Basic," "Preferences," and "Headset" sections in the menu on your phone. Once "Analog Headset Mode" appears on the screen, use the up and down arrows to select the Jabra Mode and then choose "Back," "Exit" or "Menu" to return to the main screen.

ShoreTel EHS Setup guide

| ShoreTel | Phones | |
|---|---------|---------|
|  | IP 565g | IP 560g |
| | IP 560 | IP 265 |
| | IP 230 | IP 230g |

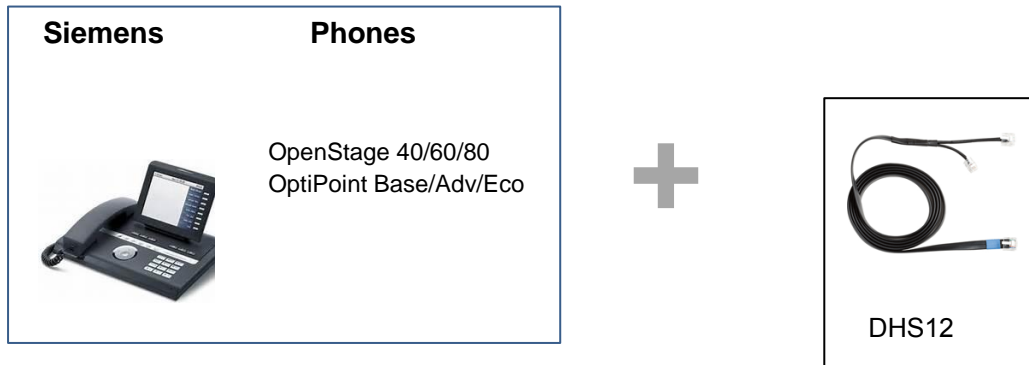


Connection Diagram

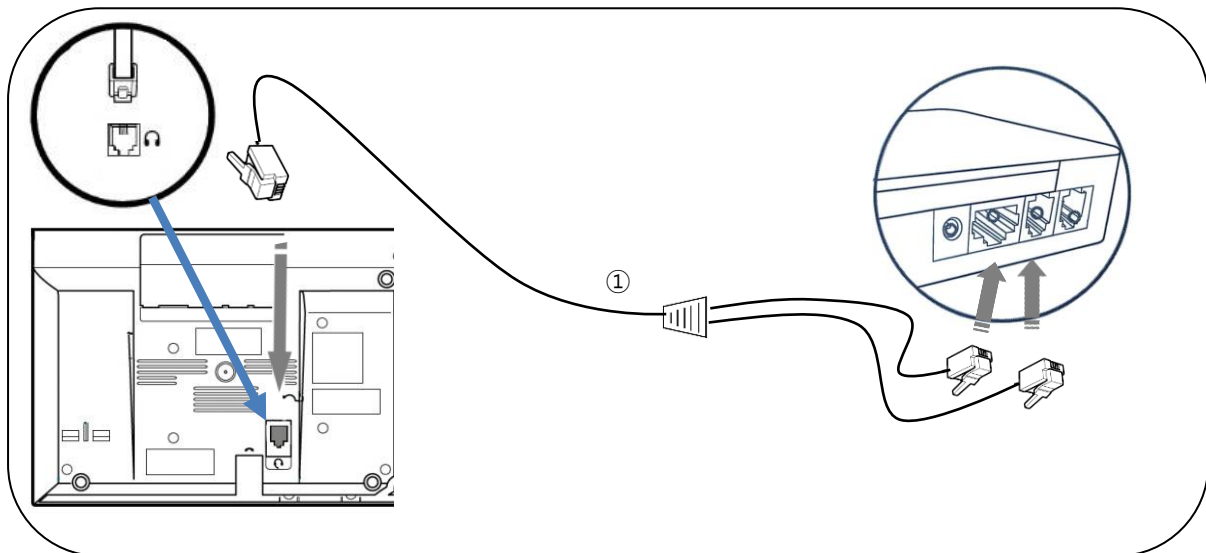


- ① Power cable (RJ-45 to RJ-12)
- ② Telephone cord (RJ-9 to RJ-9) : Cable length : 600mm
- ③ External Microphone : For ring detection

Siemens/Unify EHS Setup guide

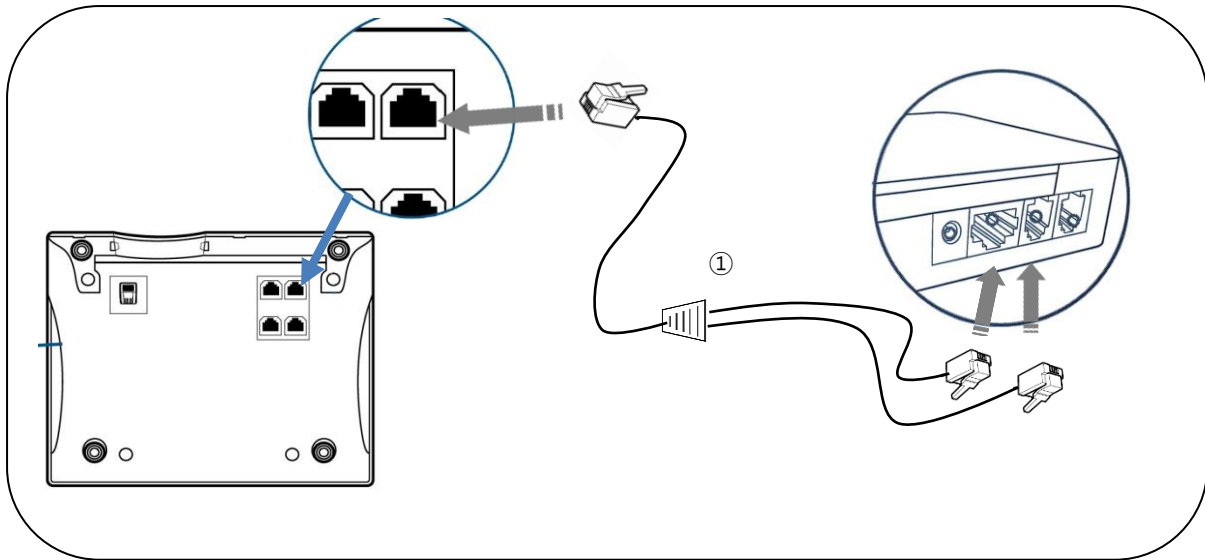


Connection Diagram (For OpenStage series)



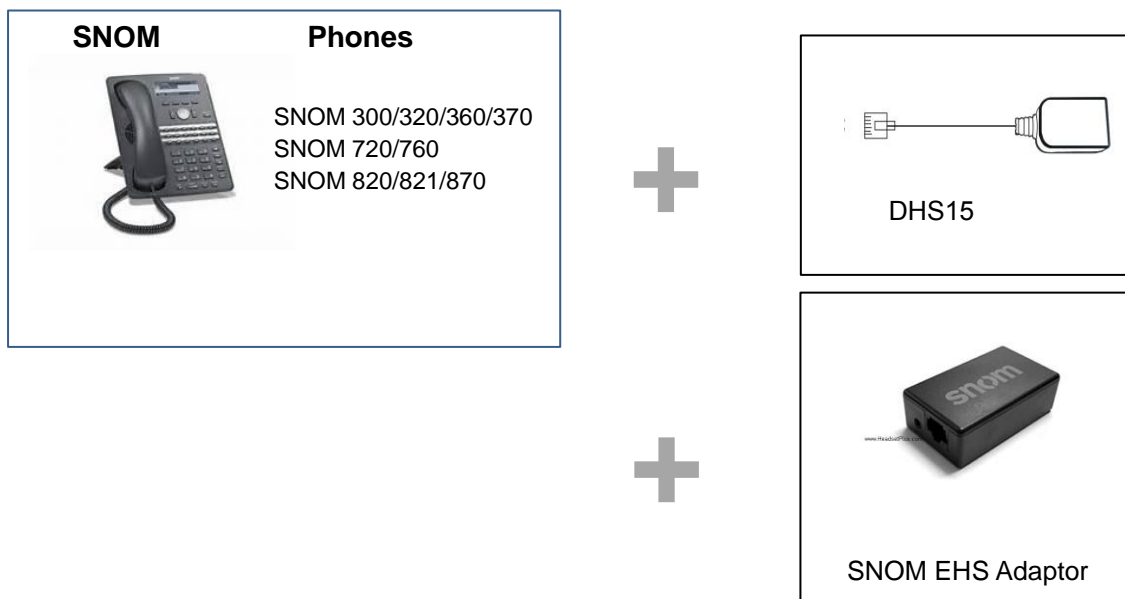
① DS-DHSG EHAS adpter (DHS12) : RJ-45(8P8C) and RJ-9(4P4C) to RJ-45(8P8C)

Connection Diagram (For OpenScape and Optipoint series)

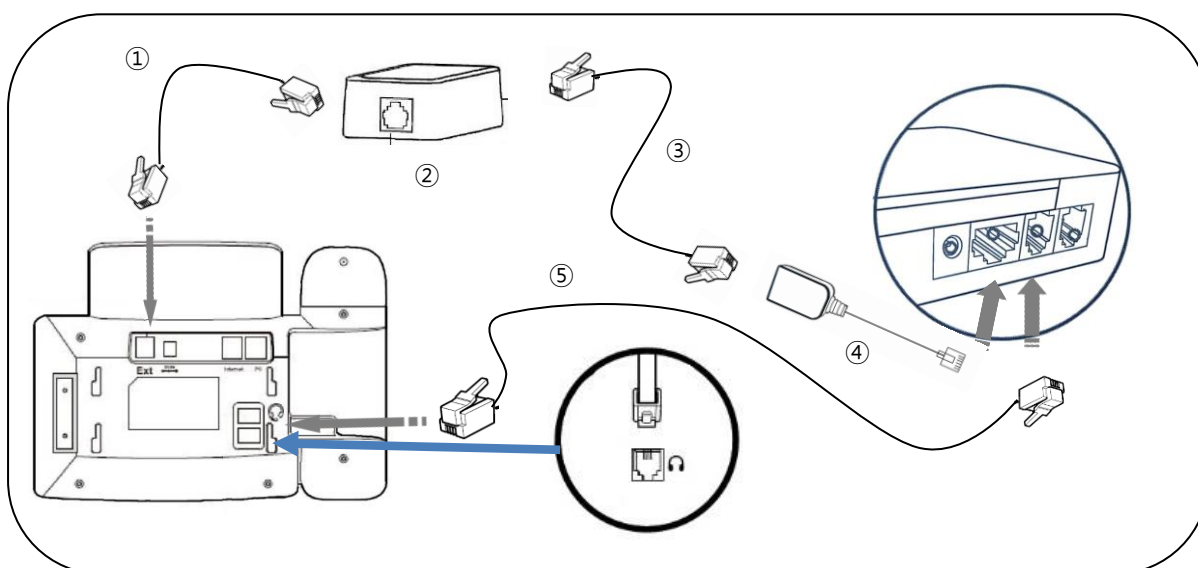


① DS-DHSG EHAS adapter (DHS12) : RJ-45(8P8C) and RJ-9(4P4C) to RJ-45(8P8C)

SNOM EHS Setup guide



Connection Diagram




- ① Cord (RJ-12 to RJ-12) supplied by manufacturer of EHS Adapter – snom 3xx/snom 820
Cord (RJ-45 to RJ-12) supplied by manufacturer of EHS Adapter – snom 821/snom 870
- ② EHS Adapter supplied by Snom
- ③ Cord (RJ-45 to RJ-45) supplied by manufacturer of EHS Adapter
- ④ EHS Gender
- ⑤ Telephone cord (RJ-9 to RJ-9) : Cable length 600mm

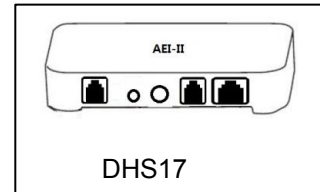
Snom 3xx: 7.3.30 + bootloader 1.1.3u and higher

Snom 7xx: 8.7.3.6 and higher

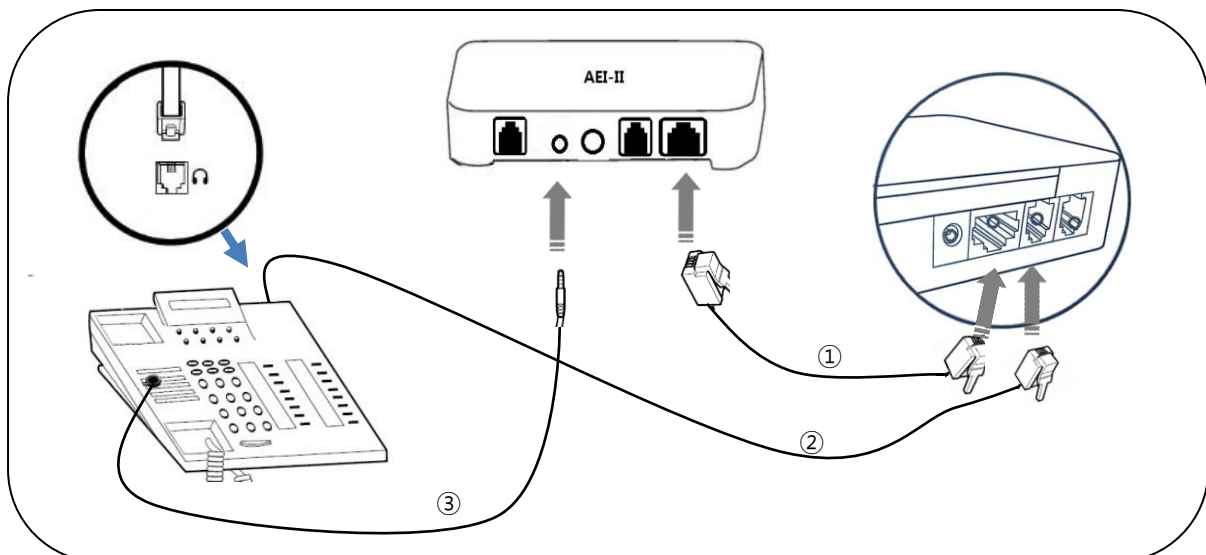
Snom 8xx: 8.4.32 and higher

Toshiba EHS Setup guide

| Toshiba | Phones | |
|---|-------------|------------|
|  | IP5022-SD | IP5122-SD |
| | IP5122-SDC | IP5131-SDL |
| | IP5132-SD | |
| | DP5022-SD | DP5022-SDM |
| | DP5032-SD | DP5122-SD |
| | DP5130-FSDL | DP5130-SDL |
| | DP5132-SD | |
| | | |
| | | |

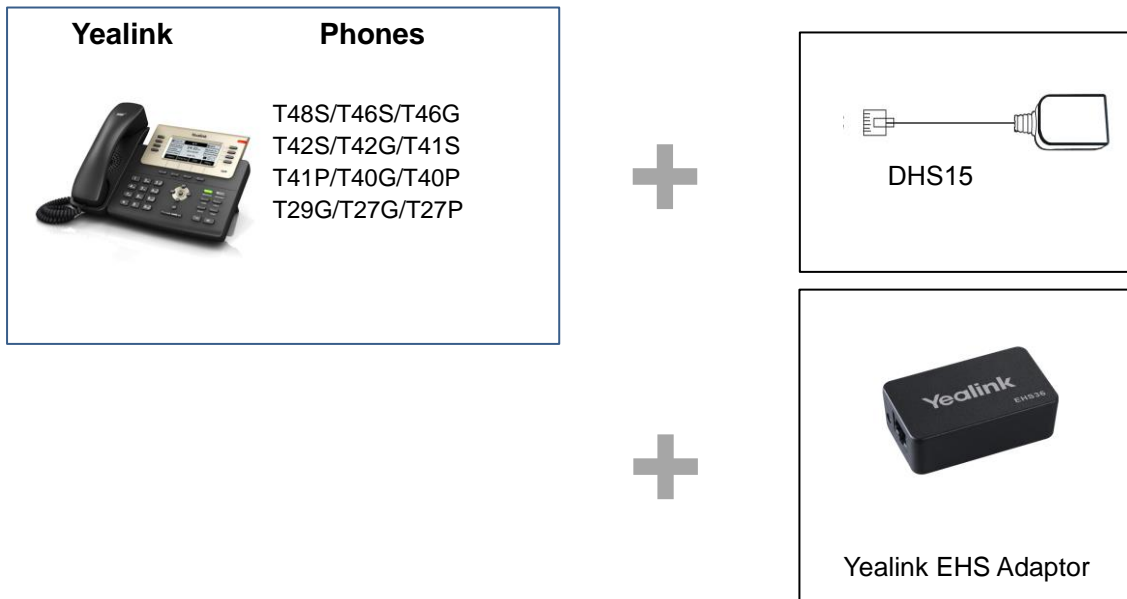


Connection Diagram

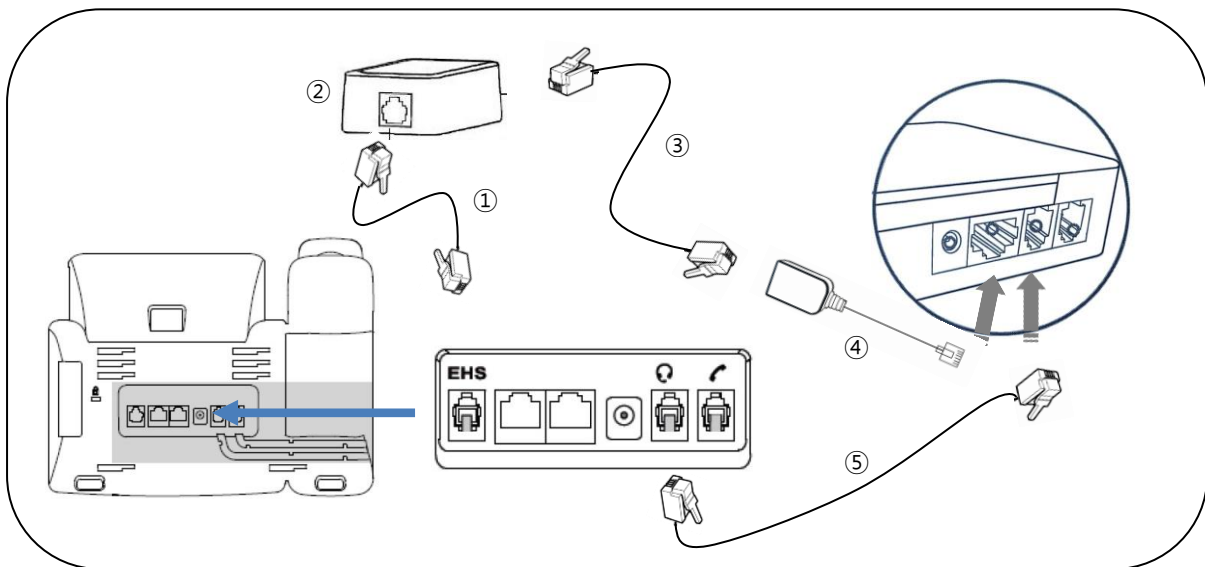


- ① Power cable (RJ-45 to RJ-12)
- ② Telephone cord (RJ-9 to RJ-9) : Cable length : 600mm
- ③ External Microphone : For ring detection

Yealink EHS Setup guide



Connection Diagram



- ① Cord (RJ-12 to RJ-12) supplied by manufacturer of EHS Adapter
- ② EHS Adapter supplied by Yealink
- ③ Cord (RJ-45 to RJ-45) supplied by manufacturer of EHS Adapter
- ④ EHS Gender
- ⑤ Telephone cord (RJ-9 to RJ-9) : Cable length 600mm