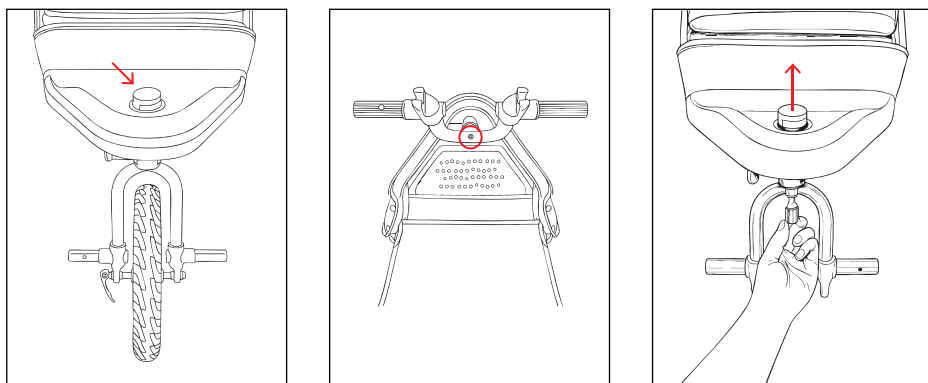


9. Place the front rider handle in the hole, and twist to lock it into place. To remove the front rider handle, lift up the plastic sleeve at the base of the handle, and twist. You can now pull the handle out.



10. If you don't have the handle installed, we recommend keeping the plastic cap cover in place to prevent dirt and water flowing into the front fork and bearings. This simply slots in. To remove it, you will need a long screw driver and pop it out from underneath the front fork.
(screw driver specification: Diameter under 6.0mm & Length over 150mm)

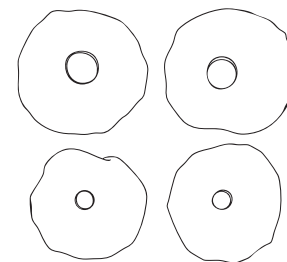
Installation Guide

outnabout

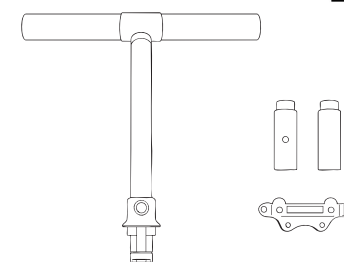
Installation video



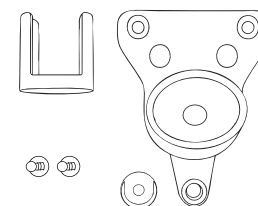
In your front rider bag you will have:



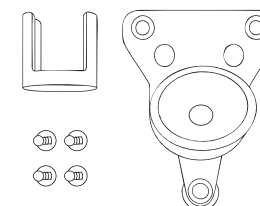
12" and 14" front wheel fabric covers



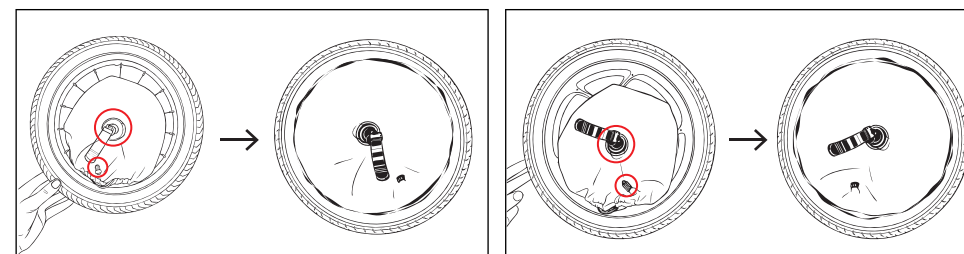
Front rider handle / Front rider pegs / New mount



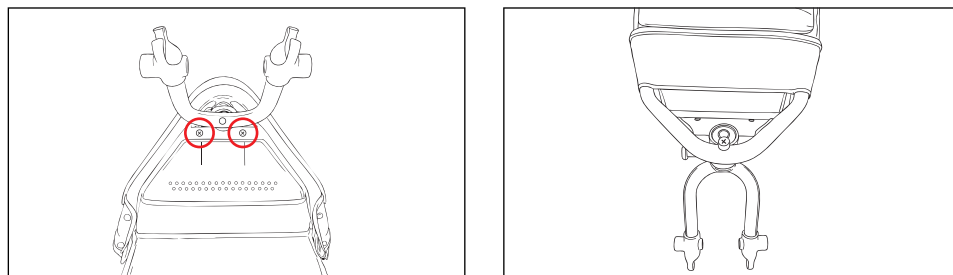
V6 Front rider mount and cap



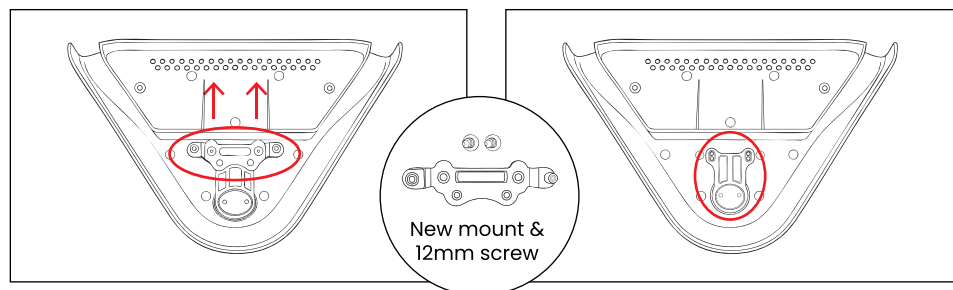
V5 Front rider mount and cap



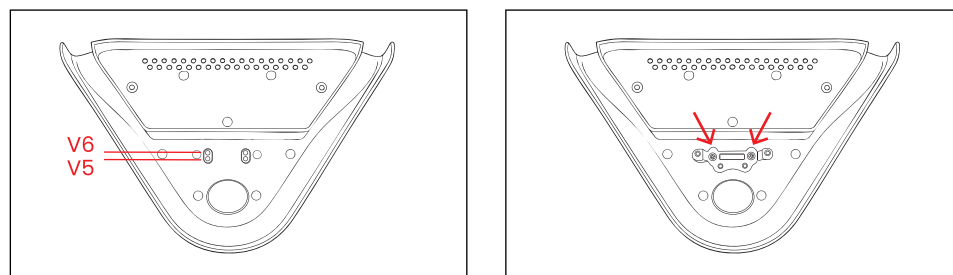
1. Remove your front wheel from the buggy using the quick release lever. Deflate the front wheel by removing the plastic cap on the valve and pressing down on the thin rod in the middle of the valve. You may need a spoon or knife to press it down. When your wheel is partially deflated, you will be able to feed the fabric cover around the rim of your wheel, under the tyre. Select the fabric cover to match your wheel size (12" or 14"). Make sure the fabric cover with a hole in it, is on the same side of the wheel as where the valve is pointing towards. Line the hole up with the valve, and then feed the outer edge of the fabric cover between the tyre and the rim. Repeat for both sides, and then re inflate your tyre.



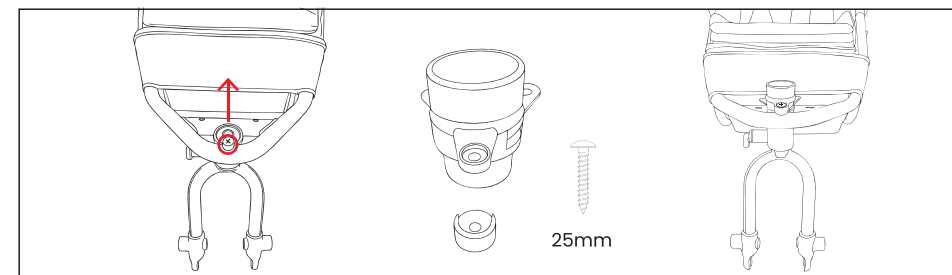
2. Remove the footplate from your buggy by removing the screws underneath the front frame/fork. If you put the front fork in swivel mode, you can swivel it for better access to the screws. Keep these screws safe.



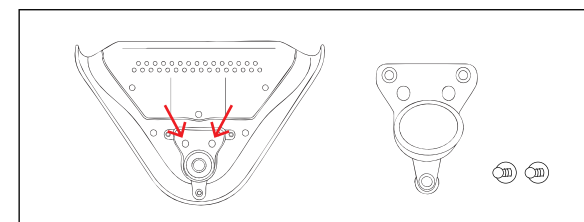
3. Unscrew the mount and plastic cap in the bottom of the footplate. This cap is made of two parts. Remove the cap & mount, and use the new mount & screw which inside of the PE bag.



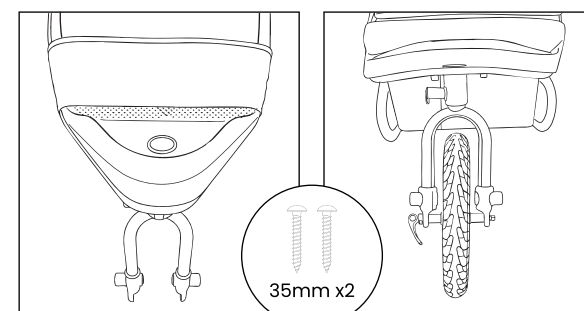
4. Re attach the new mount to the bottom of your footplate. There are two holes that you can mount this to. If you have a v5 or older model, attach the new mount with 12mm screw to the holes as indicated in the diagram. If you have a v6, attach the new mount with 12mm screw in the other holes as indicated in the diagram.



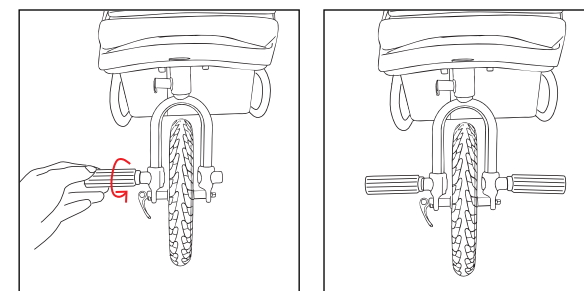
5. Attach the front rider mount to the top of your buggy frame. For v6, you first need to remove the small plastic piece at the front and attach using the same screw at the front.



6. For the V5, attach the front rider mount to the bottom of your footplate with the 12mm screw.



7. Put the footplate (back) on to your buggy, using the same screws and holes that originally kept your footplate in place. If done correctly, it should look like the image below.



8. Add your front wheel, and screw in the foot rest pegs to the front fork.