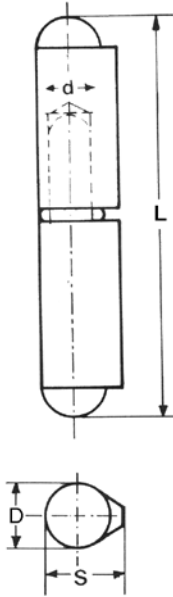


# STEEL WITH GREASE FITTING

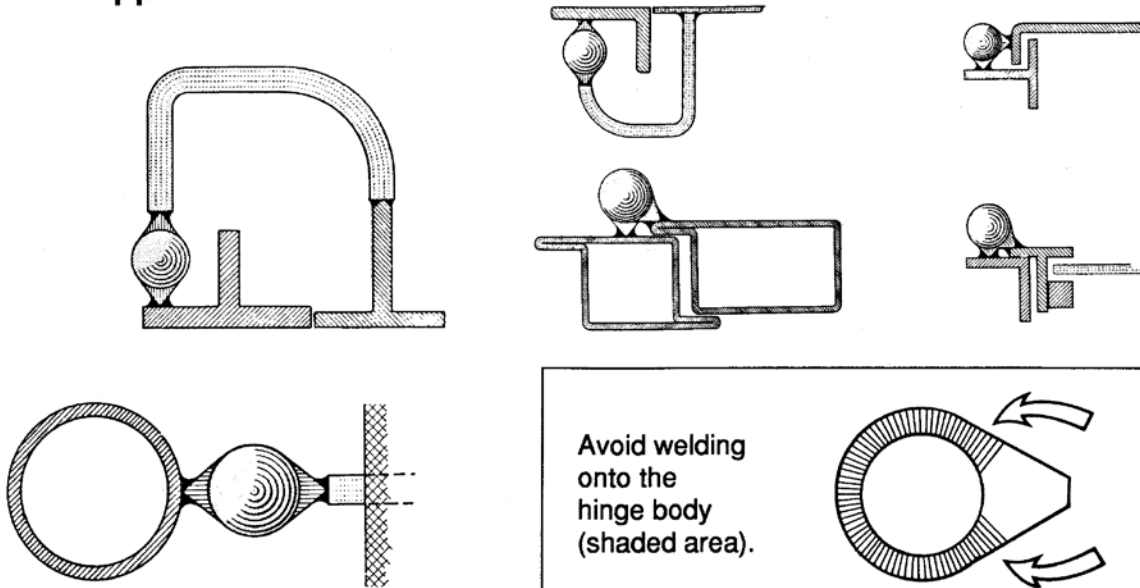


## FIXED PIN TYPE:

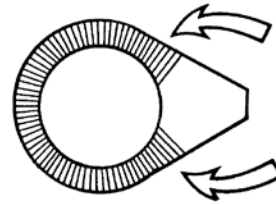
FES-GF - Mild Steel (1015) with case hardened steel pin, brass washer and grease fitting

HS SKU#	Model #	L Length inches	D/S Cross Section inches	d Pin Diameter inches	Weight Load Per Pair lbs. *
602060	FES060GF	2.3/8"	13/32" - 15/32"	1/4"	185
602061	FES080GF	3.3/16"	1/2" - 5/8"	5/16"	300
602062	FES100GF	4"	5/8" - 3/4"	13/32"	440
602064	FES120GF	4.3/4"	5/8" - 3/4"	7/16"	440
602066	FES150GF	6"	3/4" - 1"	1/2"	650
602068	FES200GF	8"	29/32" - 1.1/8"	5/8"	800
602070	<b>FES260GF</b>	<b>10"</b>	<b>1.1/8" - 1.7/16"</b>	<b>3/4"</b>	<b>1000</b>

## Weld on Applications



Avoid welding onto the hinge body (shaded area).



**\*IMPORTANT:** The printed weight loads should be used as a general guideline only. Load compensation should be made when determining the size and number of hinges for applications that may be subject to dynamic forces (shock loads), areas where the pin is set in a horizontal position, and other uses that create extra pin stress (ie. long gates, wide doors, etc.). Addition of heat-resistant molybdenum or lithium-based greases to the hinge's internal body before final assembly is recommended and may provide freer movement and a longer life. No guarantee for weight loads and dimensions.