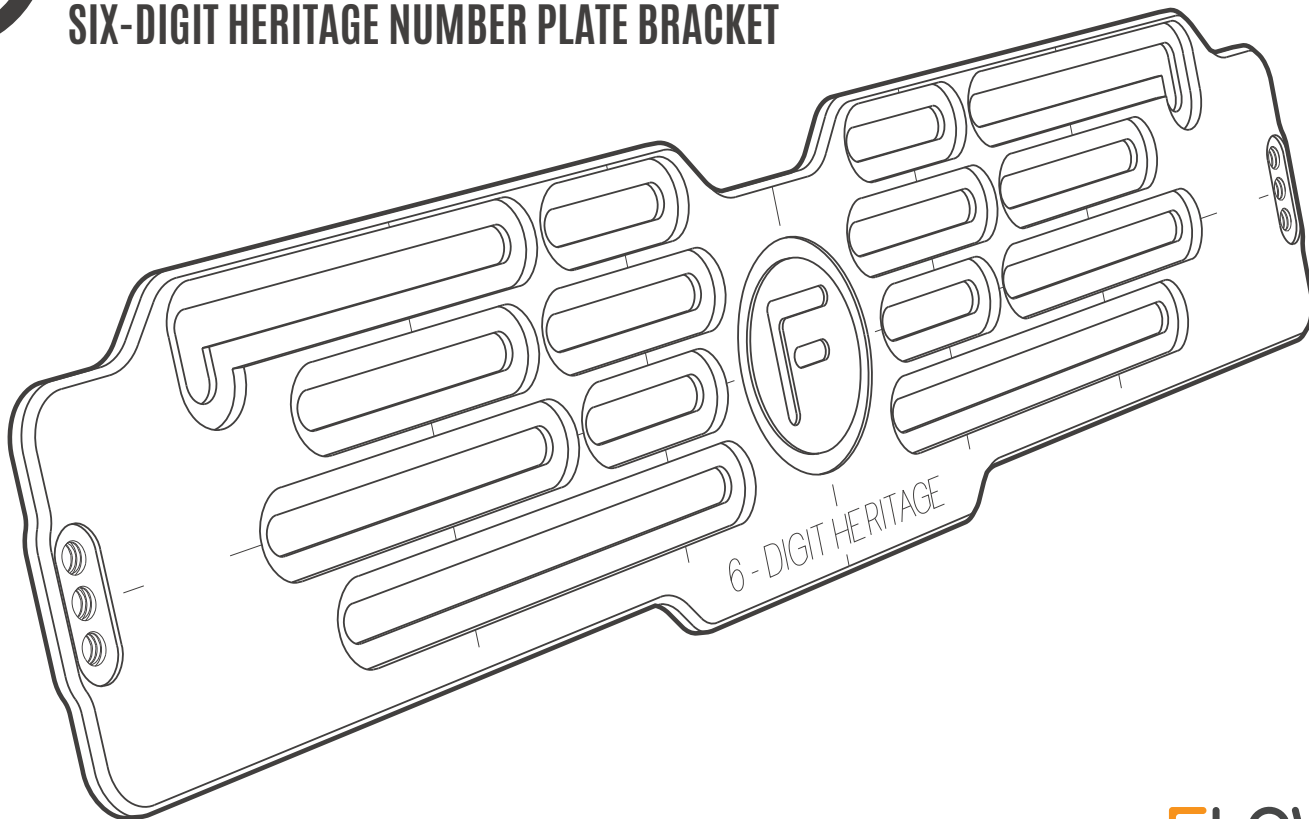




FLOW DESIGNS

SIX-DIGIT HERITAGE NUMBER PLATE BRACKET

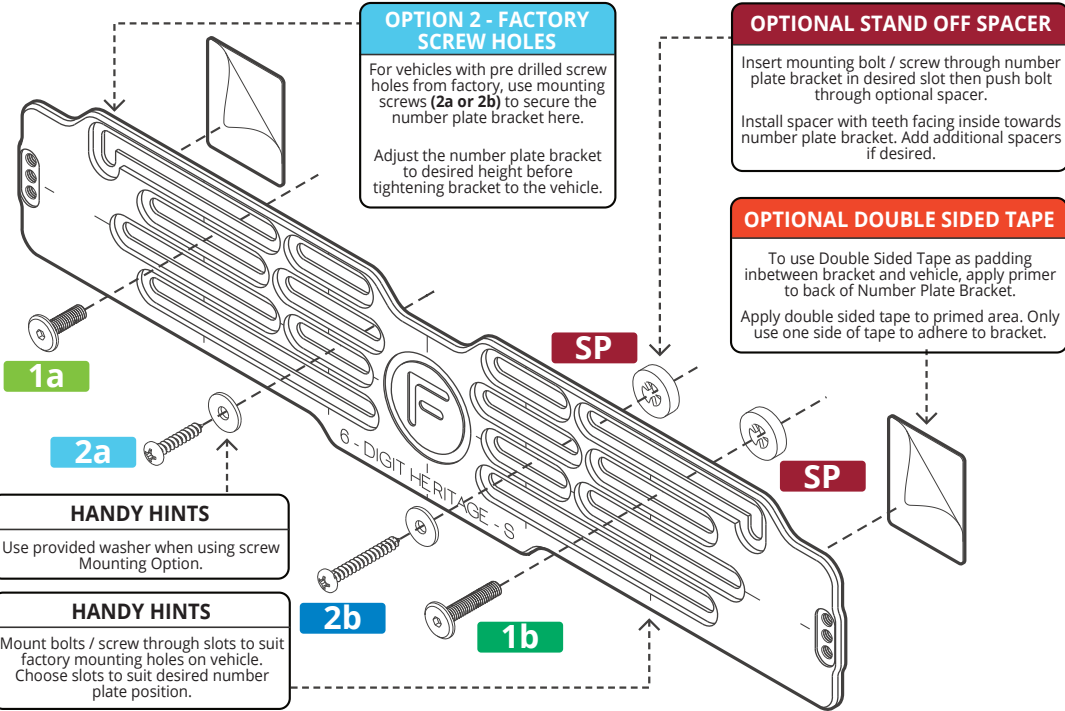


INSTALLATION DIAGRAM - STEP 1

MOUNTING SIX-DIGIT HERITAGE NUMBER PLATE BRACKET TO VEHICLE

INSTALLATION GUIDE

- Remove existing number plate from vehicle.
- Choose Bracket Mounting Option to suit vehicle.
 - Option 1** (M6 Connector Bolts)
 - Option 2** (10g Screws)
- Select correct length bolt / screw (**a, b or c**) to suit Mounting Option. Use shorter bolts / screws if spacers are not used.
- Insert bolt / screw through number plate bracket and optional spacer then align to vehicle.
- Tighten Mounting bolts / screws to secure number plate bracket to vehicle.



BRACKET FITTING KIT

OPTION 1a



CONNECTOR BOLT
BLACK STAINLESS
M6 X 20MM
X 2

OPTION 1b



CONNECTOR BOLT
BLACK STAINLESS
M6 X 30MM
X 2

OPTION 1c



CONNECTOR BOLT
BLACK STAINLESS
M6 X 15MM
X 2

OPTION 2a



10G X 25MM
SELF-TAPPING
SCREW
+
16mm WASHER
X 2

OPTION 2b



10G X 38MM
SELF-TAPPING
SCREW
+
16mm WASHER
X 2

SPACER



STAND OFF
SPACER
X 4

DOUBLE SIDED TAPE



3M DOUBLE
SIDED TAPE
X 4
+
PRIMER
X 1

INSTALLATION DIAGRAM - STEP 2

MOUNTING NUMBER PLATE TO SIX-DIGIT HERITAGE NUMBER PLATE BRACKET

INSTALLATION GUIDE

- Choose Plate Mounting **Option 1** (Dress Bolts) or **Option 2** (Security Bolts).
- Insert bolt through Heritage number plate, then align and mount to number plate bracket.
- Tighten Plate Mounting bolts to secure number plate to bracket.

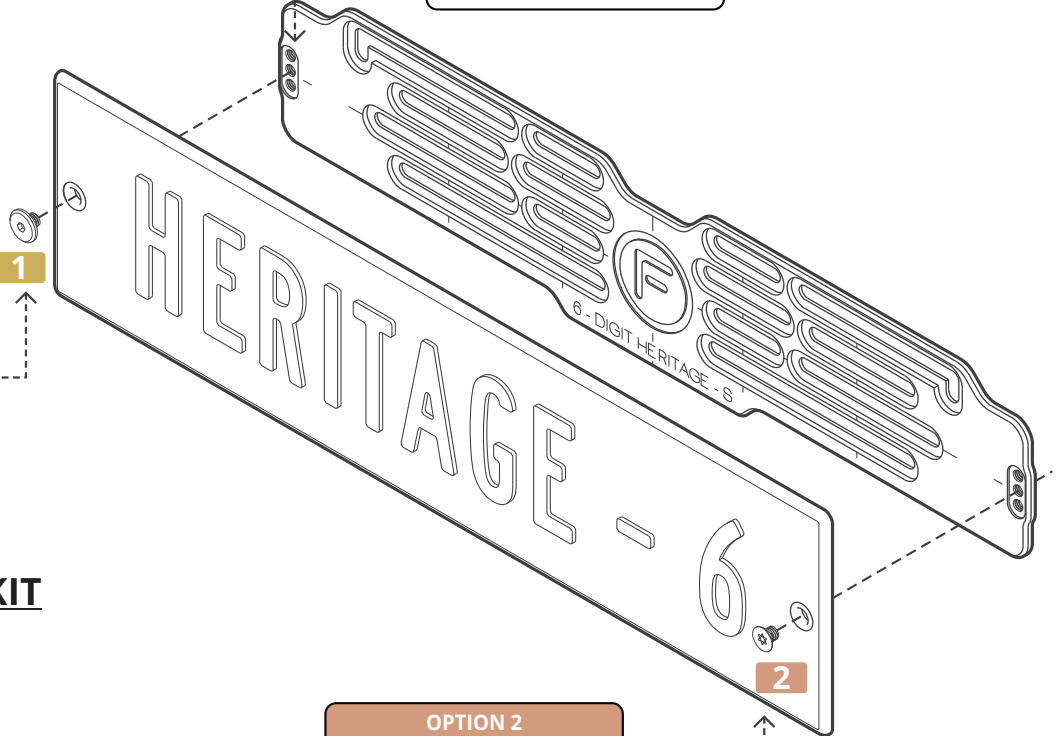
OPTION 1

Choose Dress Bolt option to cover brass eyelet.

1

HANDY HINTS

Align Heritage number plate to desired height then mount through one of the holes.



NUMBER PLATE FITTING KIT

OPTION 1



DRESS BOLT
BLACK STAINLESS
M6 X 8MM
X 2

OPTION 2



SECURITY BOLT
BLACK STAINLESS
M6 X 10MM
X 2

OPTION 2

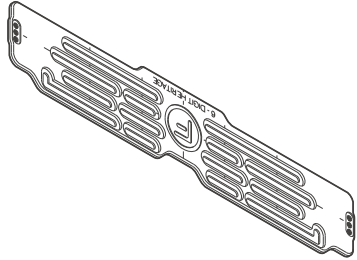
Choose Security Bolt option to expose brass eyelet. Use provided Security Key to tighten.

PARTS AND FITTING KIT

SIX-DIGIT HERITAGE NUMBER PLATE BRACKET

PARTS LIST

X 1
SIX-DIGIT HERITAGE
NUMBER PLATE BRACKET



X 2
CONNECTOR
BOLT
BLACK STAINLESS
M6 X 20MM



X 2
CONNECTOR
BOLT
BLACK STAINLESS
M6 X 30MM



X 2
CONNECTOR
BOLT
BLACK STAINLESS
M6 X 15MM



X 2
10G X 25MM
SELF-TAPPING
SCREW
+
16mm WASHER



X 2
10G X 38MM
SELF-TAPPING
SCREW
+
16mm WASHER



X 2
DRESS BOLT
BLACK STAINLESS
M6 X 8MM



X 2
SECURITY BOLT
BLACK STAINLESS
M6 X 10MM



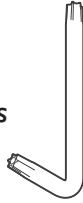
X 4
STAND OFF
SPACER



X 4
3M VHB
DOUBLE SIDED
TAPE



X 1
3M
PRIMER



X 1
M6
SECURITY
KEY

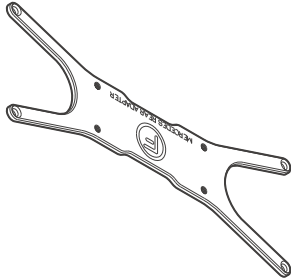


X 1
4MM
ALLEN KEY



MERCEDES REAR ADAPTER PLATE

Rear Adapter Plate required to
for use with Mercedes Benz
vehicles.



OPTIONAL ACCESSORIES (SOLD SEPARATELY)