



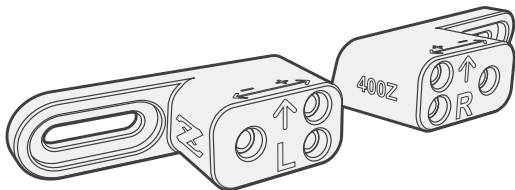
FLOW BRACKETS

NISSAN RZ34 400Z

NUMBER PLATE HOLDER / PLINTH INSTRUCTIONS



REEL SHARED ON DEC 5, 2023
BY @FLOWBRACKETS

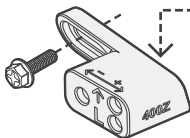


INSTALLATION GUIDE

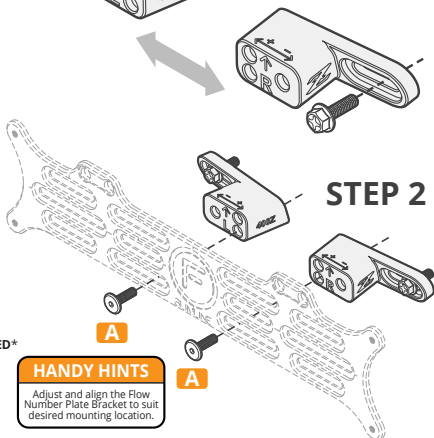
- Remove OEM Number Plate Plinth from vehicle.
- Roughly align the left and right spacers to the factory screw holes.
- Reuse the 2 OEM bolts from the factory plinth to mount the spacers. Spare bolts from fitting kit (A) can also be used to mount to vehicle.
- Align and secure the number plate bracket to the plinth and vehicle using the supplied screws (A).

HANDY HINTS

Slide the spacers left or right to adjust the spacing of the bracket to the vehicle.



STEP 1



STEP 2

FITTING KIT

FLOW NUMBER PLATE BRACKET NOT INCLUDED*

A



CONNECTOR BOLT
BLACK STAINLESS
M6 X 20MM
X 4

HANDY HINTS

Adjust and align the Flow Number Plate Bracket to suit desired mounting location.

A



#flowbrackets

NISSAN 400Z NUMBER PLATE PLINTH
COMPATIBLE WITH ALL FLOW BRACKETS