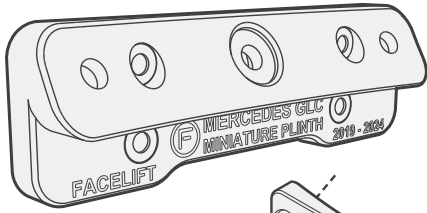




FLOW BRACKETS

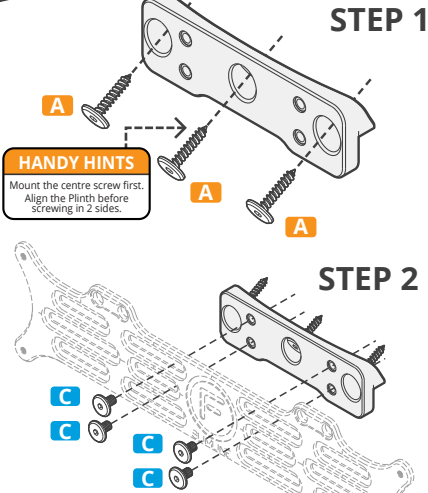
MERCEDES C/X 253 GLC (2019-2024)

MINIATURE NUMBER PLATE PLINTH INSTRUCTIONS

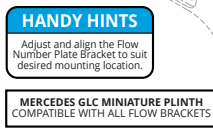
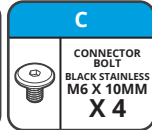
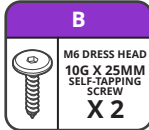
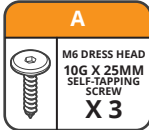


INSTALLATION GUIDE

- Remove OEM Number Plate Plinth from the front of the vehicle.
- Align the centre of the Plinth to the factory screw hole. Ensure the Plinth is flush to the front bumper.
- Using supplied screws (A), mount the centre screw the vehicle. Then mount the 2 remaining screws into the Plinth.
- Optional - Use screws from fitting kit (B) to plug grommet holes left behind from OEM Number Plate Plinth.
- Secure the number plate bracket to the plinth and vehicle using the supplied screws (C).



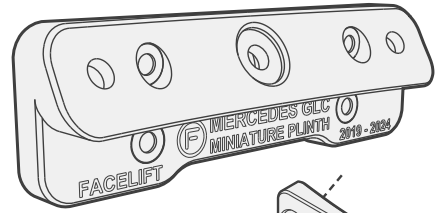
FITTING KIT FLOW NUMBER PLATE BRACKET NOT INCLUDED*



FLOW BRACKETS

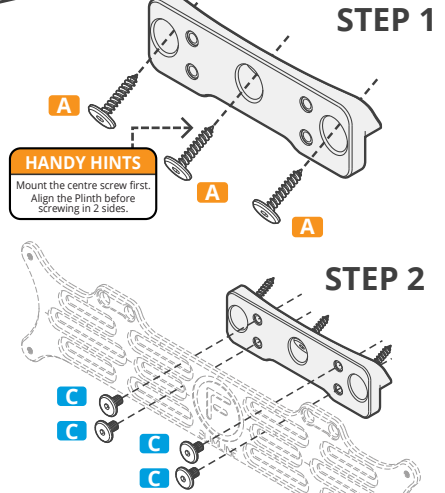
MERCEDES C/X 253 GLC (2019-2024)

MINIATURE NUMBER PLATE PLINTH INSTRUCTIONS

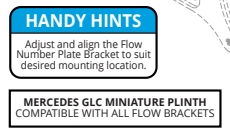
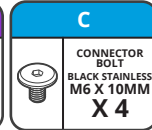
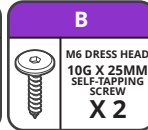
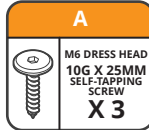


INSTALLATION GUIDE

- Remove OEM Number Plate Plinth from the front of the vehicle.
- Align the centre of the Plinth to the factory screw hole. Ensure the Plinth is flush to the front bumper.
- Using supplied screws (A), mount the centre screw the vehicle. Then mount the 2 remaining screws into the Plinth.
- Optional - Use screws from fitting kit (B) to plug grommet holes left behind from OEM Number Plate Plinth.
- Secure the number plate bracket to the plinth and vehicle using the supplied screws (C).



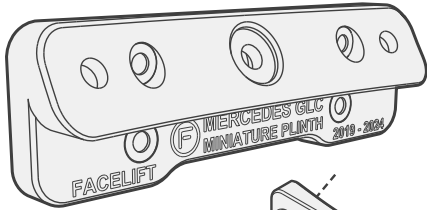
FITTING KIT FLOW NUMBER PLATE BRACKET NOT INCLUDED*



FLOW BRACKETS

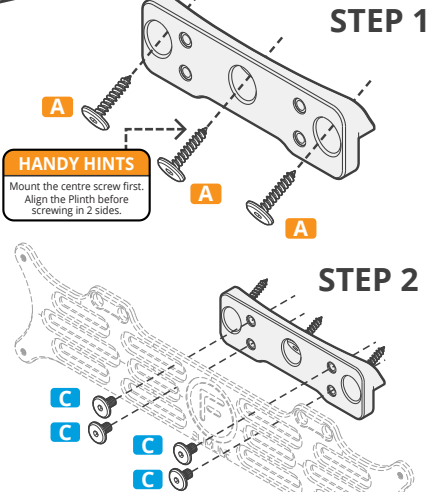
MERCEDES C/X 253 GLC (2019-2024)

MINIATURE NUMBER PLATE PLINTH INSTRUCTIONS

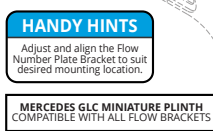
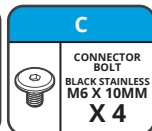
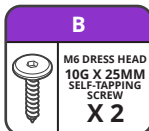
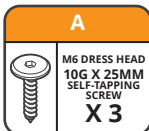


INSTALLATION GUIDE

- Remove OEM Number Plate Plinth from the front of the vehicle.
- Align the centre of the Plinth to the factory screw hole. Ensure the Plinth is flush to the front bumper.
- Using supplied screws (A), mount the centre screw the vehicle. Then mount the 2 remaining screws into the Plinth.
- Optional - Use screws from fitting kit (B) to plug grommet holes left behind from OEM Number Plate Plinth.
- Secure the number plate bracket to the plinth and vehicle using the supplied screws (C).



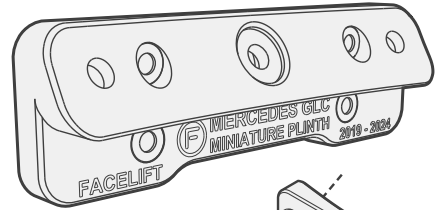
FITTING KIT FLOW NUMBER PLATE BRACKET NOT INCLUDED*



FLOW BRACKETS

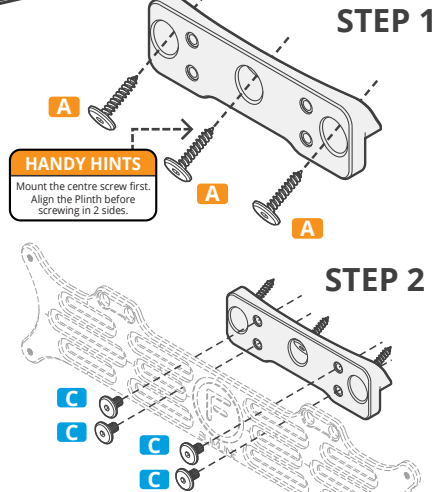
MERCEDES C/X 253 GLC (2019-2024)

MINIATURE NUMBER PLATE PLINTH INSTRUCTIONS



INSTALLATION GUIDE

- Remove OEM Number Plate Plinth from the front of the vehicle.
- Align the centre of the Plinth to the factory screw hole. Ensure the Plinth is flush to the front bumper.
- Using supplied screws (A), mount the centre screw the vehicle. Then mount the 2 remaining screws into the Plinth.
- Optional - Use screws from fitting kit (B) to plug grommet holes left behind from OEM Number Plate Plinth.
- Secure the number plate bracket to the plinth and vehicle using the supplied screws (C).



FITTING KIT FLOW NUMBER PLATE BRACKET NOT INCLUDED*

