

Support Column

Installation Instructions

Please read instructions entirely before commencing on the installation of the Support Column. You are also welcome to view our instructional video at [youtube.com/watch?v=_kFCnIB6iY8](https://www.youtube.com/watch?v=_kFCnIB6iY8).

Tools required:

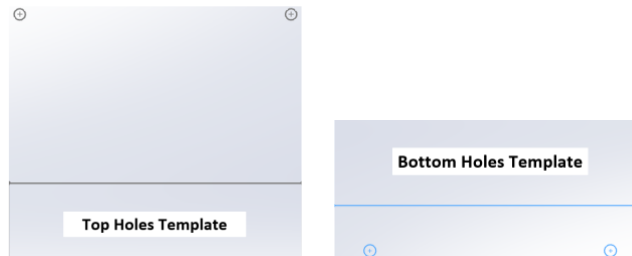
- Phillips screwdriver
- Drill and 5/8" drill bit
- Pen or marker
- Scissors
- Tape (optional)

Kit includes:

- (1) Support Column
- (4) Toggle Bolts w/ anchors
- (4) Flat Washers
- (2) Sleeve Washers
- Instructions w/ templates



Before you begin, use the scissors to cut the template sheet (Page 5) into two pieces along the dashed line. Then using a pen, punch out the "+" at the center of each hole.



Step 1:

Fold the Bottom Holes Template along the solid line and place the folded template, centered on top of the zPods logo with the holes to the inside. Using a pen or marker, mark the holes in the Bottom.

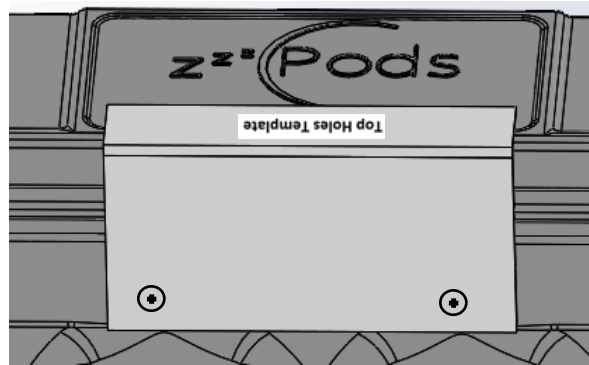
NOTE: Tape could be used to help hold the template in place



Step 2:

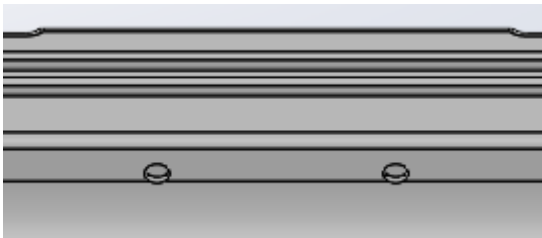
Fold the Top Holes Template along the solid line and place the folded template, centered on over the zPods logo with the holes on the bottom. Using a pen or marker, mark the holes in the Bottom.

NOTE: Tape could be used to help hold the template in place

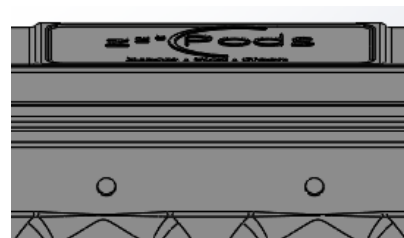


Step 3:

Use the drill and 5/8" drill bit to drill out the four holes on the marks.



Bottom holes (inside of the zPods logo)



Top holes (under the zPods logo)

Step 4:

Create the bottom fastener stack up:

- Place the washer on the toggle bolt
- Insert the bolt from the textured side of a Support Column bottom hole (see picture)
- Place the sleeve washer on the bolt (larger side towards Support Column)
- Screw the anchor onto the bolt (sides should squeeze towards Support Column)

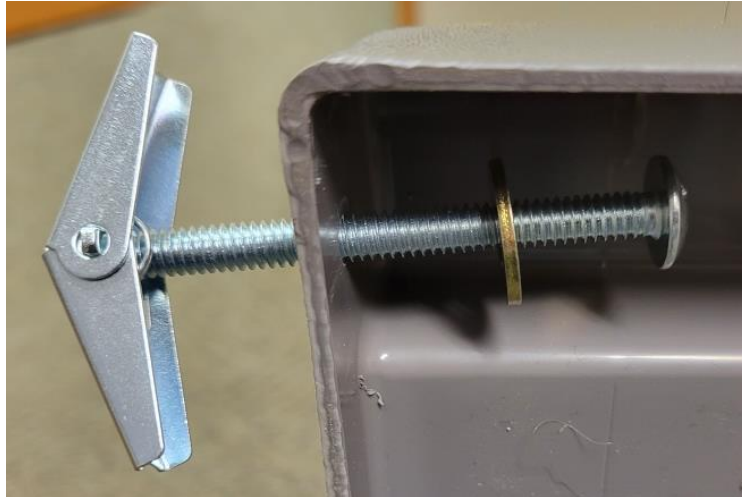


Repeat steps a) through d) to create the second fastener stack up using the remaining bottom hole.

Step 5:

Create the top fastener stack up:

- a) Place the washer on the toggle bolt
- b) Insert the bolt from the smooth side of a Support Column top hole (see picture)
- c) Screw the anchor onto the bolt (sides should squeeze towards Support Column)



Repeat steps a) through c) to create the second fastener stack up using the remaining top hole.

Step 6:

Squeeze the top anchors closed and feed them through the holes in the Top.

NOTE: *Leave fasteners loose to help align the bottom fasteners.*



Step 7:

Squeeze the bottom anchors closed and feed them through the holes in the Bottom. Tighten the anchor bolts to secure the Support Column.



Step 8:

Tighten the top anchor bolts to secure the Support Column.



NOTE: If doors rub when installed, slightly loosen both top anchor bolts, re-adjust the Support Column and then tighten them again.



Top Holes Template



Bottom Holes Template

