

Benches & Seating

Ireland's widest range of high quality seats and benches delivered fast for your next project



Ireland:

B2 Athy Business Campus
Athy, Co. Kildare R14 PK74
Ph: 01 531 2777
Email: sales@pittman.ie

United Kingdom:

1310 Solihull Parkway, Birmingham Business Park
Birmingham B37 7YB
Ph: 0121 630 3527
sales@pittman.uk

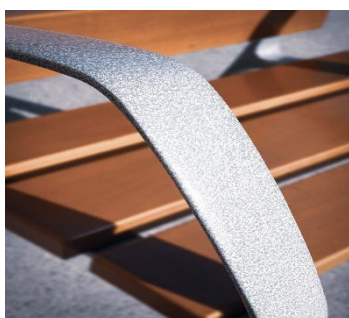
Neobarcano Bench



- 1800(L) x 710(W) x 835(H); 65kg
- Extra durable tropical treated hardwood with cast iron legs
- Ferrus treated iron – guaranteed high resistance to corrosion
- Excellent water, insect and fungus resistance
- Delivered to site fully assembled
- Install using M10 threaded bar sets
- Optional 750mm chair and 3000mm bench available – call our sales team

 <https://www.pittman.ie/products/benito-neobarcano-wooden-park-bench>

 <https://pittman.uk/neobarcano-bench>



Ireland:
B2 Athy Business Campus
Athy, Co. Kildare R14 PK74
Ph: 01 531 2777
Email: sales@pittman.ie

United Kingdom:
1310 Solihull Parkway, Birmingham Business Park
Birmingham B37 7YB
Ph: 0121 630 3527
sales@pittman.uk

Citizen Eco Recycled Park Bench



- 1800(L) x 650(W) x 810(H)
- 100% recycled polymer design
- Maintenance-free for life
- Long-lasting – will not chip, rot or dry up during use
- Highly resistance to harsh weather conditions
- Delivered fully assembled – bolt down for fast and easy installation

 <https://www.pittman.ie/products/benito-citizen-eco-recycled-park-bench>

 <https://pittman.uk/benito-citizen-eco-recycled-park-bench>



Ireland:
B2 Athy Business Campus
Athy, Co. Kildare R14 PK74
Ph: 01 531 2777
Email: sales@pittman.ie

United Kingdom:
1310 Solihull Parkway, Birmingham Business Park
Birmingham B37 7YB
Ph: 0121 630 3527
sales@pittman.uk

Kube Concrete Bench



- Choose from 2000mm or 500mm squared sections or 500mm round sections
- Precast smooth granite grey concrete - extremely durable design
- Stylish concrete finish suitable for public spaces
- Install individually or group together to form large seating spaces
- No installation required – free-standing design
- Available in white concrete finish – call our sales team

 <https://www.pittman.ie/products/benito-kube-concrete-bench>

 <https://pittman.uk/benito-kube-concrete-bench>



Ireland:

B2 Athy Business Campus
Athy, Co. Kildare R14 PK74
Ph: 01 531 2777
Email: sales@pittman.ie


United Kingdom:

1310 Solihull Parkway, Birmingham Business Park
Birmingham B37 7YB
Ph: 0121 630 3527
sales@pittman.uk

Gavarres Park Bench



- Available in 5 different sizes and variations
- Pine wood seat with optional seat backing
- Vacuum pressure autoclave class IV protection – protected against woodworm, termites and other insects
- 8mm corten sheet legs – stylish and long-lasting bench foundation
- Delivered fully assembled
- Easy installation on site – bolts down via 4 fixing points on base plates

 <https://www.pittman.ie/products/benito-gavarres-park-bench>

 <https://pittman.uk/benito-gavarres-park-bench>



Ireland:

B2 Athy Business Campus
Athy, Co. Kildare R14 PK74
Ph: 01 531 2777
Email: sales@pittman.ie

United Kingdom:

1310 Solihull Parkway, Birmingham Business Park
Birmingham B37 7YB
Ph: 0121 630 3527
sales@pittman.uk

Vertebra Park Bench



- Fully customised sizes and designs for your project
- Optional straight and curved seat designs
- 100% recycled plastic – no recycled plastic
- Maintenance-free for life; eco-friendly and fully recyclable
- Great resistance against weathering and water
- Stylish design – excellent alternative to concrete benches

 <https://www.pittman.ie/products/benito-vertebra-park-bench>

 <https://pittman.uk/benito-vertebra-park-bench>



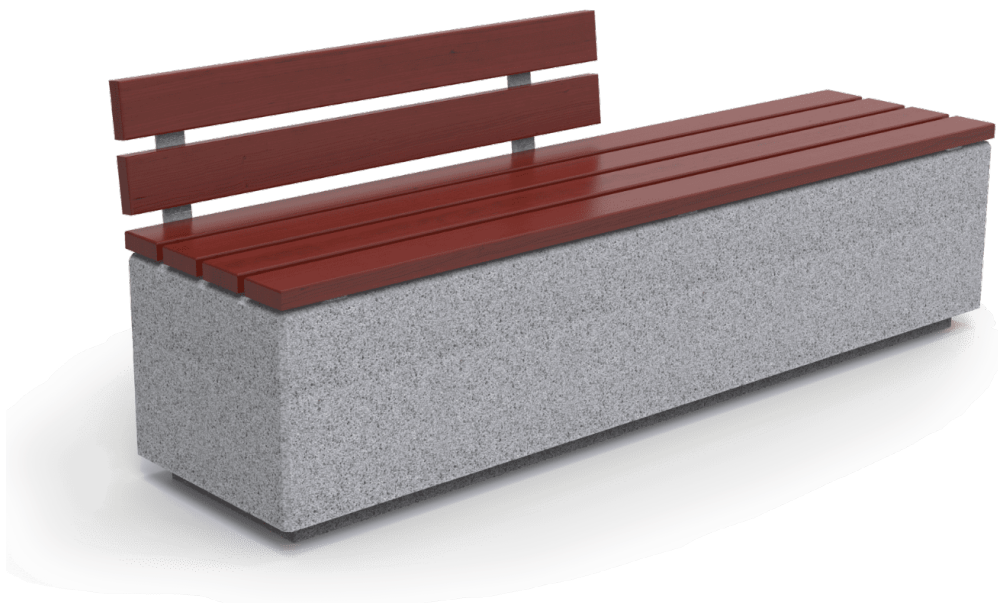
Ireland:

B2 Athy Business Campus
Athy, Co. Kildare R14 PK74
Ph: 01 531 2777
Email: sales@pittman.ie

United Kingdom:

1310 Solihull Parkway, Birmingham Business Park
Birmingham B37 7YB
Ph: 0121 630 3527
sales@pittman.uk

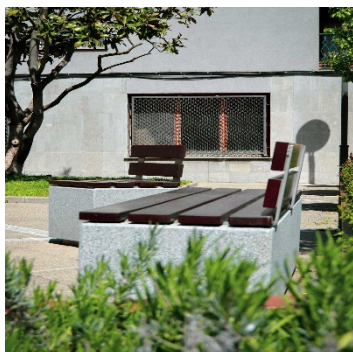
Kube Madera Concrete Bench



- Available in 2000mm or 500mm lengths
- Optional full and half backrest designs for unique seating designs
- Precast granite grey concrete – extremely long-lasting in urban spaces
- Tropical wood seat and backrests – resistant to rotting, fungi and insects
- Free-standing design – no installation required
- Stylish design – excellent alternative to concrete benches

 <https://www.pittman.ie/products/benito-kube-madera-concrete-bench>

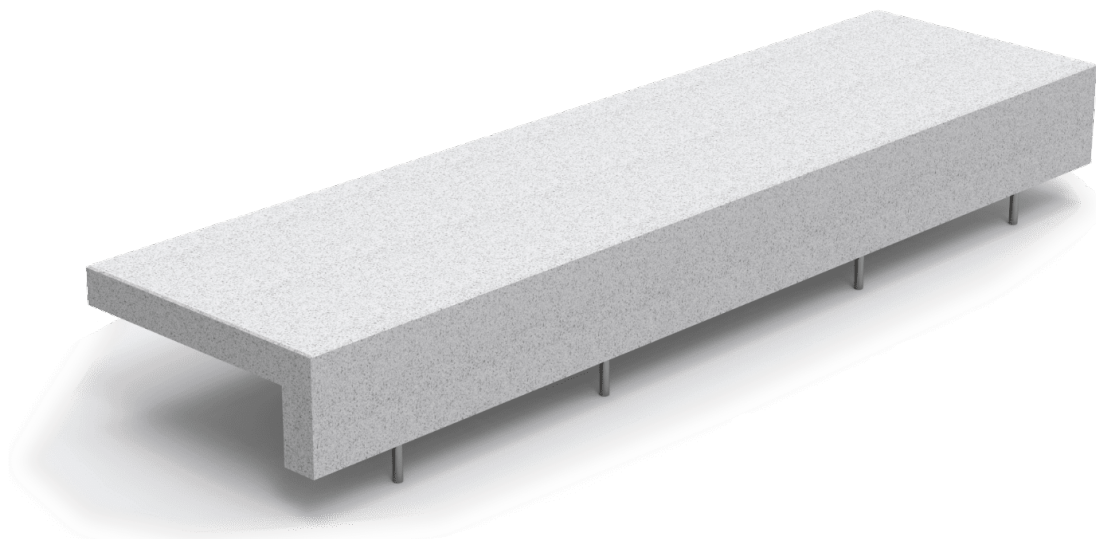
 <https://pittman.uk/benito-kube-madera-concrete-bench>





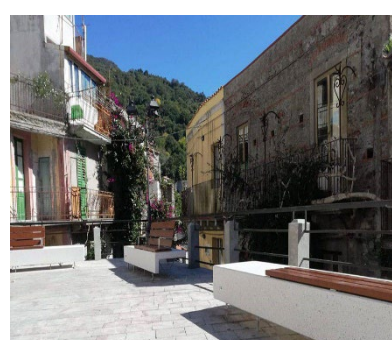
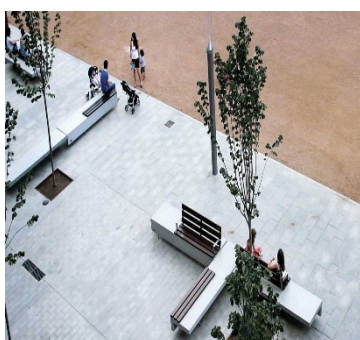
Ireland:
B2 Athy Business Campus
Athy, Co. Kildare R14 PK74
Ph: 01 531 2777
Email: sales@pittman.ie

United Kingdom:
1310 Solihull Parkway, Birmingham Business Park
Birmingham B37 7YB
Ph: 0121 630 3527
sales@pittman.uk

Ela Concrete Bench



- 3000(L) x 800(W) x 420(H)mm
- Precast reinforced waterproof polished white concrete – extreme durability
- Available in standard, wooden seat and wooden backed seated versions on request
- Free-standing design – no installation required on site
- Attractive, modern and stylish finish for public spaces
- Stylish design – excellent alternative to concrete benches
-  <https://www.pittman.ie/products/benito-ela-concrete-bench>
-  <https://pittman.uk/benito-ela-concrete-bench>



Ireland:

B2 Athy Business Campus
Athy, Co. Kildare R14 PK74
Ph: 01 531 2777
Email: sales@pittman.ie

United Kingdom:

1310 Solihull Parkway, Birmingham Business Park
Birmingham B37 7YB
Ph: 0121 630 3527
sales@pittman.uk

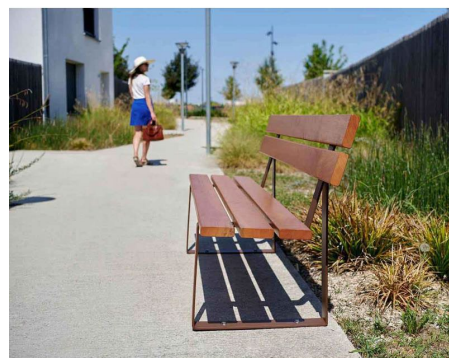
Riga Street Wooden Bench



- Available in 1800mm or 2000mm lengths
- High quality cast steel feet and base – strong, long-lasting foundation
- Choose from 5no. exotic hardwood or stained softwood wooden slats
- Optional light oak or mahogany style finish
- Easy installation via integral base plates – bolt down fast
- Choose from up to 10 standard RAL colours for the steel structure
- Delivered fully assembled

 <https://www.pittman.ie/products/riga-street-wooden-bench>

 <https://pittman.uk/riga-street-wooden-bench>



Ireland:

B2 Athy Business Campus
Athy, Co. Kildare R14 PK74
Ph: 01 531 2777
Email: sales@pittman.ie

United Kingdom:

1310 Solihull Parkway, Birmingham Business Park
Birmingham B37 7YB
Ph: 0121 630 3527
sales@pittman.uk

Venice Park Bench



- 1800(L) x 450(W) x 450(H)mm seat
- Exotic hardwood seat with zinc primed steel frame and legs
- Choose from up to 10 optional RAL colours for the steel sections
- Full steel version and backless version also available on request
- Unique laser-cut design offers excellent contemporary style for greenspaces
- Easy on-site assembly and installation

 <https://www.pittman.ie/products/venice-park-bench>

 <https://pittman.uk/venice-park-bench>



Ireland:
B2 Athy Business Campus
Athy, Co. Kildare R14 PK74
Ph: 01 531 2777
Email: sales@pittman.ie

United Kingdom:
1310 Solihull Parkway, Birmingham Business Park
Birmingham B37 7YB
Ph: 0121 630 3527
sales@pittman.uk

Lublin Wooden Park Bench



- 2000(L) x 620(D) x 750(H)mm
- 40mm exotic hardwood slats with elegant, stylish design
- Available in light oak or mahogany wood finish
- Cast steel frame for long-lasting support and foundation – optional colours on request
- Reinforced with 3no. stainless steel rods at rear for added support
- Easy installation – bolts down via 4no. base plates

 <https://www.pittman.ie/products/lublin-wooden-park-bench>

 <https://pittman.uk/benito-kube-madera-concrete-bench>



Ireland:

B2 Athy Business Campus
Athy, Co. Kildare R14 PK74
Ph: 01 531 2777
Email: sales@pittman.ie

United Kingdom:

1310 Solihull Parkway, Birmingham Business Park
Birmingham B37 7YB
Ph: 0121 630 3527
sales@pittman.uk

Bonn Steel Bench



- Available in 1200mm or 1800mm lengths
- Full galvanised steel design – high resistance to rust
- Available in surface and sub-surface mounted options
- The strongest steel benches for urban settings – custom RAL colours available
- Zinc coating protects paint and maintains stylish design
- Flat-packed for easy self-installation on-site

 <https://www.pittman.ie/products/bonn-steel-bench>

 <https://pittman.uk/bonn-steel-bench>



Ireland:

B2 Athy Business Campus
Athy, Co. Kildare R14 PK74
Ph: 01 531 2777
Email: sales@pittman.ie

United Kingdom:

1310 Solihull Parkway, Birmingham Business Park
Birmingham B37 7YB
Ph: 0121 630 3527
sales@pittman.uk

Cologne Steel Bench



- Available in 1200mm or 1800mm lengths
- Fully customisable to cater specifically to your project
- Full galvanised steel design – highly durable with excellent rust resistance
- Available in 4no. surface and sub-surface mounted options
- Choose custom RAL colours, optional armrests, mounting types and formats
- Flat-packed for easy self-installation on-site

 <https://www.pittman.ie/products/cologne-steel-bench>

 <https://pittman.uk/cologne-steel-bench>



Ireland:

B2 Athy Business Campus
Athy, Co. Kildare R14 PK74
Ph: 01 531 2777
Email: sales@pittman.ie

United Kingdom:

1310 Solihull Parkway, Birmingham Business Park
Birmingham B37 7YB
Ph: 0121 630 3527
sales@pittman.uk

Koblenz Steel Bench



- Available in 700mm, 1200mm or 1800mm lengths
- Strongest galvanised steel design for outdoor spaces
- Highly durable with excellent rust resistance
- Classic design suited to all outdoor greenspaces
- Choose custom RAL colours and extension options to fully customise your project
- Flat-packed for easy self-installation on-site

 <https://www.pittman.ie/products/koblenz-steel-bench>

 <https://pittman.uk/koblenz-steel-bench>



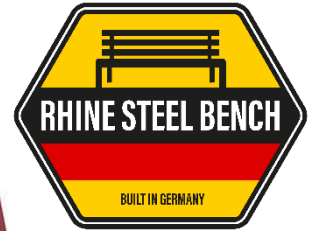
Ireland:

B2 Athy Business Campus
Athy, Co. Kildare R14 PK74
Ph: 01 531 2777
Email: sales@pittman.ie

United Kingdom:

1310 Solihull Parkway, Birmingham Business Park
Birmingham B37 7YB
Ph: 0121 630 3527
sales@pittman.uk

Emmerich Steel Bench



- Available in 1200mm or 1800mm lengths
- Fully galvanised steel design with high resistance to rusting and corrosion
- Modern design suited to public spaces
- Custom RAL colours available on request – call our sales team
- Sub-surface mount – set in concrete for a permanent outdoor seating option
- Flat-packed for easy self-installation on-site

 <https://www.pittman.ie/products/emmerich-steel-bench>

 <https://pittman.uk/emmerich-steel-bench>



Ireland:
B2 Athy Business Campus
Athy, Co. Kildare R14 PK74
Ph: 01 531 2777
Email: sales@pittman.ie

United Kingdom:
1310 Solihull Parkway, Birmingham Business Park
Birmingham B37 7YB
Ph: 0121 630 3527
sales@pittman.uk