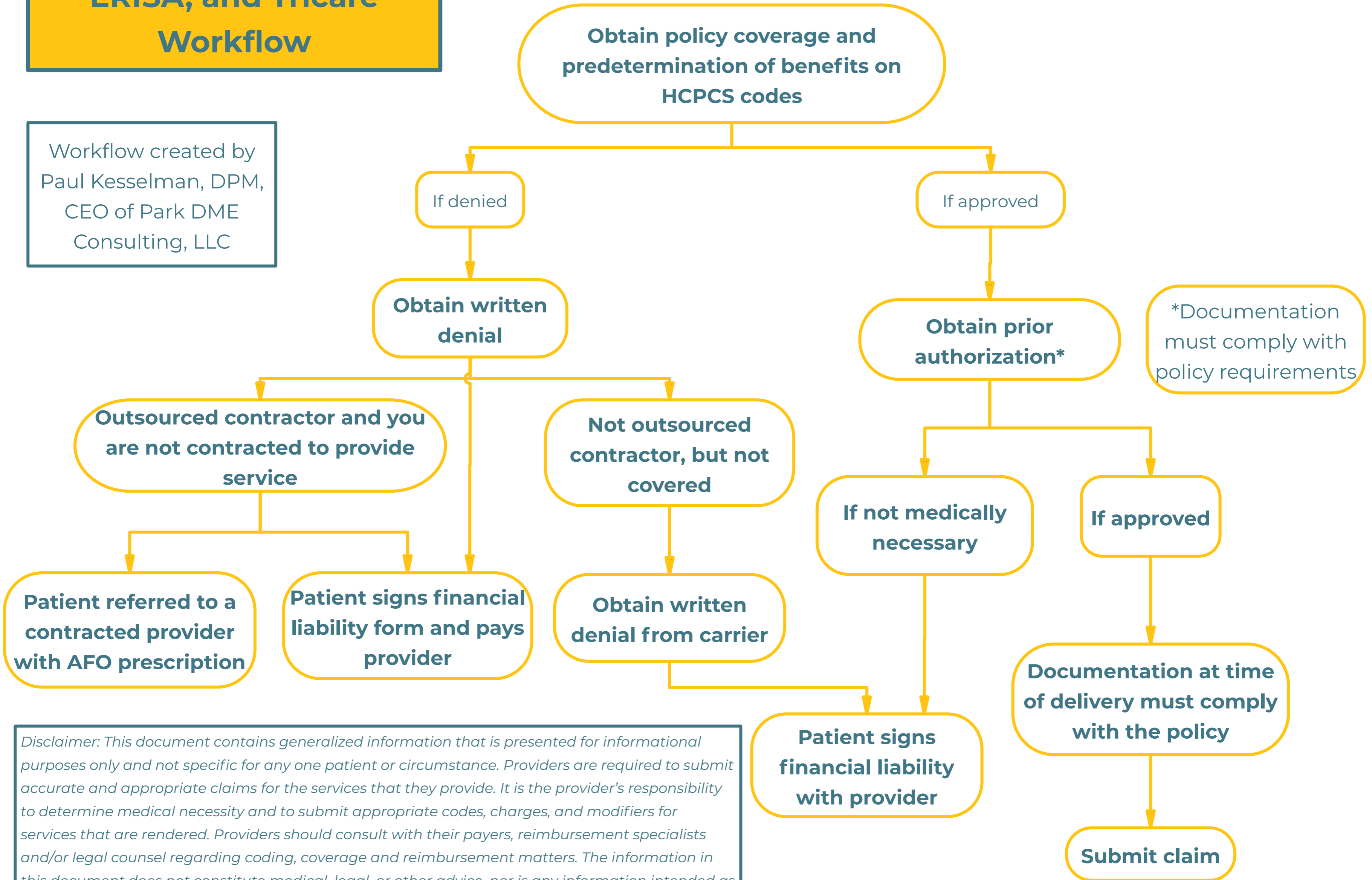


# Commercial, Medicaid, ERISA, and Tricare Workflow

Workflow created by Paul Kesselman, DPM, CEO of Park DME Consulting, LLC



*Disclaimer: This document contains generalized information that is presented for informational purposes only and not specific for any one patient or circumstance. Providers are required to submit accurate and appropriate claims for the services that they provide. It is the provider's responsibility to determine medical necessity and to submit appropriate codes, charges, and modifiers for services that are rendered. Providers should consult with their payers, reimbursement specialists and/or legal counsel regarding coding, coverage and reimbursement matters. The information in this document does not constitute medical, legal, or other advice, nor is any information intended as a promise or guarantee by TayCo Brace regarding coverage or payment for products or procedures by Medicare or other payers. TayCo Brace specifically disclaims responsibility for the results or consequences of any actions taken in reliance on information in this document.*