

CAST COVER Series AUTOMATIC SENSOR ACTIVATED HAND DRYERS



SURFACE MOUNTED



RECESSED MOUNTED

Excel's Hands Off hand dryers provide exceptionally quiet operation with maximum strength and durability. Performance is backed by a 10 Year Limited Warranty on the dryer (5 years on the control assembly and sensor). Surface mounting or recessed mounting options are available.

Features

- Fully Automatic – Dryers are activated by an infrared sensor
- Maintenance-free brushless motor, capacitor initiated for quick starts.
- Vandal-proof – Features include tamper-proof bolts and a side-mounted heating element inaccessible through the air outlet.
- Covers are available in either a white epoxy paint or a chrome-plated finish.
- Custom colors also are available.



SURFACE MOUNTED MODEL NUMBERS

MODEL NO.	COVER FINISH	MOUNTING	TIME CYCLE	DRYER TYPE
HO-IW	White	Surface	Automatic	Hand Dryer
HO-IC	Chrome	Surface	Automatic	Hand Dryer

RECESSED MOUNTED MODEL NUMBERS

MODEL NO.	COVER FINISH	MOUNTING	TIME CYCLE	DRYER TYPE
R76-IW	White	Recessed	Automatic	Hand Dryer
R76-IC	Chrome	Recessed	Automatic	Hand Dryer

SUGGESTED MOUNTING HEIGHTS FROM FLOOR TO BOTTOM OF DRYER						UNITS ARE AVAILABLE AS SPECIFIED IN:	
	Men	Women	Teenagers	Children	Handicapped	110/120V	15 or 20 Amp. 60 hz
Surface	43" (109 cm.)	41" (104 cm.)	39" (99 cm.)	33" (84 cm.)	35" (89 cm.)	208/230V	10 Amp. 60 hz
						277V	8 Amp. 60 hz
Recessed	40" (102 cm.)	38" (97 cm.)	36" (91 cm.)	30" (76 cm.)	32" (81 cm.)	220/240V	10 amp. 50 hz

SPECIFICATIONS

Construction

A. Dryer Cover HO-IW & HO-IC Models: shall be one piece, heavy-duty, rib-reinforced die-cast zinc alloy. It shall be lightweight, unbreakable, rustproof and all exposed surfaces shall be bright chrome plated or finished with chip-proof, electrostatically applied epoxy, and fastened by two chrome plated tamper-proof bolts to a cast zinc alloy wall plate.

R76-IW & R76-IC Models: shall be one piece, heavy-duty, rib-reinforced die-cast zinc alloy. It shall be lightweight, unbreakable, rustproof and all exposed surfaces shall be bright chrome plated or finished with chip-proof, electrostatically applied epoxy, fitted with a fixed, die-cast, chrome plated, zinc alloy nozzle.

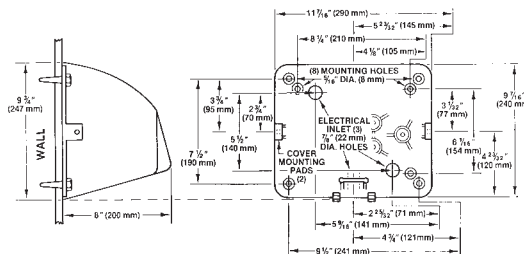
B. The wall plates for surface mounted models shall be equipped with (3) 7/8" (22 mm) diameter holes one of which shall be suitable for use with surface conduit, for ease of wiring.

Recessed covers shall be fastened by four flat-head, recessed, tamper-proof bolts to wall box. Wall plate shall be fastened to the wall box by four concealed 1/4" (6mm) mounting bolts, and shall be equipped with two knockouts for ease of wiring.

C. HO-IW & HO-IC Models: shall have a chrome plated, die-cast zinc air outlet which shall be fixed to the blower housing and shall be of a design that will not allow foreign objects to enter the dryer. R76-IW & R76-IC Models: shall be equipped with an air inlet opening on the bottom of the casting and covered with a vandal resistant metal protective grill to prevent the entry of foreign objects. A fixed chrome plated, die-cast zinc air outlet nozzle on the front of the cover shall permit a full flow of warm air when in operation, and shall be protected by a cast alloy grating fixed into the blower housing.

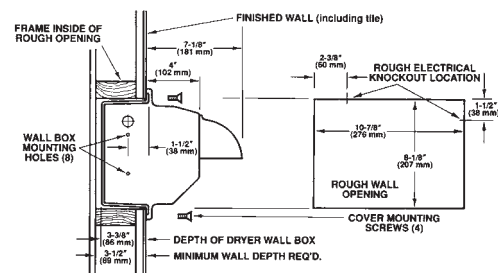
D. All internal parts shall be coated according to Underwriters' Laboratories, Inc. requirements.

E. Entire mechanism shall be internally grounded.



SURFACE MOUNTED

Dimensions: 12 lg. x 9 3/4" high x 8" deep (305 mm x 248 mm x 203 mm)
Weight: cast 17 lbs. (7.7 kgs.)



RECESSED MOUNTED

Dimensions: 12 1/2 lg. x 9 3/4" high x 4" deep 318 mm x 248 mm x 102 mm
Weight: 20 lbs. (9.0 kgs.)

Mechanism

A. Motor shall be capacitor-initiated, brushless type (for longer life and quiet operation) 1/10 hp, 3450 rpm with self-lubricated bearings. It shall be insulated by a resilient mounting, and shall be protected by a self-resetting thermal protector. For 50 hz applications, motor shall be a universal 1/10 hp, 4200 rpm at rated load, with sealed lubricated ball bearings. Motor shall be insulated by a resilient mounting and is thermally protected.

B. Fan shall be a large, single inlet centrifugal type for maximum capacity, and shall deliver 180 cfm (150 cfm for Recessed Model) Fan shall be mounted directly on the motor shaft, and fan and motor unit shall be insulated from dryer with a resilient rubber mounting to obtain maximum dampening effect.

C. The heating element is constructed of Nichrome wire and side mounted on the blower housing, thereby being vandal proof. It shall be protected by an automatic resetting thermostat, which shall open whenever air flow is cut off and shall close when flow of air is resumed. It shall produce an air temperature of 145°F/63°C at a 72°F/22°C ambient room temperature at the outlet.

D. The control assembly is activated by an infrared optical sensor located next to the air outlet. The dryer shall operate as long as hands are moving under the air outlet. There is a 50 second lockout feature, if hands are not removed.

Limited Warranty

The dryer shall be guaranteed to be free from defects for a period of ten years, except for five years on the control assembly and sensor. Warranty shall include labor performed at factory as well as the repair or exchange of defective parts, at manufacturer's option.