



# HYBRIDFLUSH® AUTOMATIC

ADA Floor Mount High Efficiency Flush Valve System

Model  
HSM1012AT12

## Description

Battery Powered, Sensor Operated HYBRIDFLUSH® Side Mount Complete HET System with Exposed Automatic Water Closet Flushometer and ADA Vitreous China Fixture.

## Flush Cycle

Model HSM1012AT12 (1.28 gpf/4.8 Lpf)

## Specifications

### Flushometer Specification (Model HSM-801-CT-12)

- Patented Gear Motor Drive
- Hands Free Infrared Sensor Activation
- Vandal and Water Resistant Design
- Chrome Plated Metal Housing
- Quiet Operation
- Electronic Manual Flush Button (Front)
- True Mechanical Manual Flush Button (Side)
- \*Mechanical Button Works When Batteries are Drained
- Operates on (4) "C" Alkaline Batteries (Included)
- Battery Life - 3+ Years
- "Low Battery" Blinking LED Indicator
- Easy Battery Replacement-No Water Shut Off Necessary
- Adjustable Sensor Distance
- Optional Three (3) Second Flush Delay Mode
- Optional 24-Hour Flush Mode
- Uses Proprietary Silicone Diaphragm with Filtered Bypass
- 1" I.P.S. Angle Stop
- Adjustable Tailpiece
- High Back Pressure Vacuum Breaker with Single Piece Hex Coupling Nut
- Spud Coupling and Flange for 1 1/2" Top Spud
- Sweat Solder Kit and Wall Flange with Set Screw
- High Efficiency For Water Conservation

### Compliance & Certifications

- ASSE 1037-2015
- ASME A112.1035-2015
- CSA B125.37-15



For Finish Variations Please Consult Factory

### Fixture Specification (Model AUT-1012A)

- Complies with ADA Accessible Standards
- White Color
- Vitreous China
- Floor Mount Water Closet Bowl
- Elongated Rim
- 10" (254mm) Rough-In
- 1-1/2" (38mm) I.P.S. Top Spud Inlet
- 2" (50mm) Fully Glazed Trapway
- 11-1/2" (292mm) x 13" (330mm) Water Surface Area
- Direct Feed Jet
- 100% Factory Tested
- Toilet Seat Not Included

### Compliance & Certifications

- ASME A112.19.2/CSA B45.1
- Energy Act of 1992
- ADA- With installation consideration for section 604 Water Closets, Accessibility Guidelines.
- ICC/ANSI A117.1
- TAS - With installation consideration for section: 4.16.3. Adult seat height 17" (432mm) to 19" (483mm).
- CSA B651 - With installation consideration for Clause 4.3.6 of the standard.
- ICC-ES PMG® Certified
- WaterSense® Listed



### Plumbing System Requirements

- Minimum Flowing Pressure: 25 PSI
- Maximum Static Pressure: 80 PSI
- Minimum Flow Rate: 25 GPM



## The HYBRIDFLUSH® Advantage

The HYBRIDFLUSH® is a revolutionary full-featured automatic/manual flush valve system. The HYBRIDFLUSH® incorporates a unique patented mechanism that allows for automatic/manual operation for unsurpassed reliability. The patented HYBRIDFLUSH® design allows for a push button to be used as an alternate flush option that is independent of the battery power. The HYBRIDFLUSH® by Advanced Modern Technologies Corporation is the most efficient, economical, and complete automatic flush valve system on the market.



Warranty  
5 Years



ADA Compliant

### Architect/Engineer Approval

Job Name	_____
Date	_____
Model Specified	_____
Quantity	_____
Variations Specified	_____
Customer/Wholesaler	_____
Contractor	_____
Architect	_____



4840 York Blvd | Los Angeles CA 90042  
Toll Free: (800) 458-2377 | Fax:(323) 258-6523  
www.CandLsupply.com | sales@CandLsupply.com

nt is subject to change without notice.



# HYBRIDFLUSH<sup>®</sup> AUTOMATIC

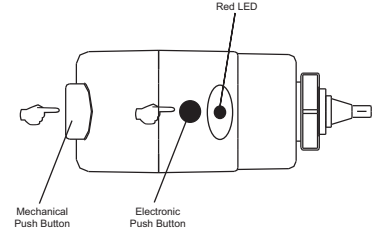
ADA Floor Mount High Efficiency Flush Valve System

Model  
HSM1012AT12

## Specifications

<b>Operation:</b>	Hybrid (Automatic/Manual)
<b>Outer Casing:</b>	Standard-Chrome Metal
<b>Operating Water Pressure:</b>	15 PSI - 100 PSI
<b>Sensor Type:</b>	Infrared
<b>Battery Type:</b>	Four "C" Alkaline Batteries
<b>Battery Life:</b>	3+ Years
<b>Arming Delay:</b>	5 Seconds
<b>Sensing Range:</b>	Adjustable, Default Set to 24" (610mm)
<b>Operation Mode:</b>	Can be Turned On and Off
<b>Water Saver Mode:</b>	N/A
<b>Flush Delay Mode:</b>	3 Seconds Delay Before Activating Flush
<b>24 Hour Flush Mode:</b>	Once Every 24 Hours After Last User
<b>Flush Cycle:</b>	Specified by Model
<b>Model HSM1012AT12</b>	1.28 gpf/4.8 Lpf
<b>Manual Override:</b>	Electronic Button/True Mechanical Button

## Visual Indicator Guide

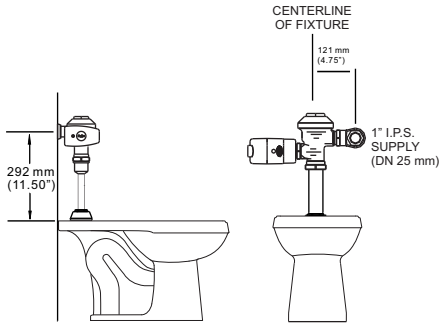


**Red LED** - Constant blinking red LED indicates batteries are low and need replacing.

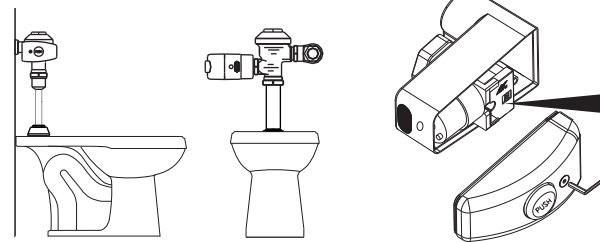
**Electronic Push Button** - Allows manual activation of flush when needed.

**Mechanical Push Button** - Allows manual activation of flush when needed and when batteries are drained.

## Dimensions



## Application



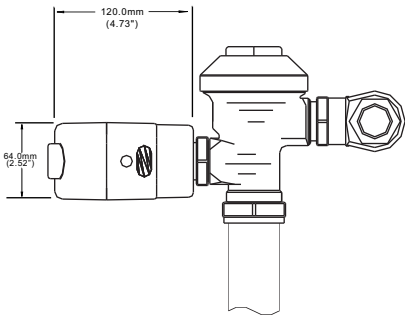
**Mode Adjustment Guide**

= Switch  
 = 5  
 = 24  
 = 3

**Switch 1 : Water Saver**  
 OFF - Flushes after every user  
 ON - Not Applicable For Water Closets (Toilets)

**Switch 2 : 24 Hour Flush**  
 OFF - None  
 ON - Flushes once every 24 hours after last user

**Switch 3 : Flush Delay**  
 OFF - 3 seconds delay before activating a flush  
 ON - No delay



**Finished Wall**

**Rough-In**

**Note:** This toilet is designed to rough-in at the standard dimension of 10" (254mm) and 12" (305mm) from the wall to the C/L of the outlet.

This drawing reflects a 10" (254mm) rough-in and additional calculations must be considered for a 12" (305mm) or any other dimensional rough-in.

**Elongated Rim Nominal Dimensions:**  
 28-5/16" (719mm) Long  
 15-7/16" (392mm) Wide  
 17-1/8" (435mm) High

## Disclaimer

Note: All vitreous china dimensions shown in these drawings are nominal and not to scale. Dimensions can vary within the tolerances established in the governing ASME A112.19.2/CSA B45.1 standard. It is important to consider this when planning rough-in and plumbing layouts.

Advanced Modern Technologies Corporation • 19800 Nordhoff Place • Chatsworth, CA 91311  
 Tel: (818) 883-2682 • Toll Free: (800) 874-7822 • Fax: (818) 883-2620 • [www.amtcorporation.com](http://www.amtcorporation.com)