



# HYBRIDFLUSH® AUTOMATIC

## ADA Floor Mount High Efficiency Flush Valve System

Model  
HSM1012AT11

### Description

Battery Powered, Sensor Operated HYBRIDFLUSH® Side Mount  
Complete HET System with Exposed Automatic Water Closet  
Flushometer and ADA Vitreous China Fixture.

### Flush Cycle


☐ Model HSM1012AT11 (1.1 gpf/4.2 Lpf)

### Specifications

#### Flushometer Specification (Model HSM-801-CT-11)

- Patented Gear Motor Drive
- Hands Free Infrared Sensor Activation
- Vandal and Water Resistant Design
- Chrome Plated Metal Housing
- Quiet Operation
- Electronic Manual Flush Button (Front)
- True Mechanical Manual Flush Button (Side)
  - \*Mechanical Button Works When Batteries are Drained
- Operates on (4) "C" Alkaline Batteries (Included)
- Battery Life - 3+ Years
- "Low Battery" Blinking LED Indicator
- Easy Battery Replacement-No Water Shut Off Necessary
- Adjustable Sensor Distance
- Optional Three (3) Second Flush Delay Mode
- Optional 24-Hour Flush Mode
- Uses Proprietary Silicone Diaphragm with Filtered Bypass
- 1" I.P.S. Angle Stop
- Adjustable Tailpiece
- High Back Pressure Vacuum Breaker with Single Piece Hex Coupling Nut
- Spud Coupling and Flange for 1 1/2" Top Spud
- Sweat Solder Kit and Wall Flange with Set Screw
- High Efficiency For Water Conservation

#### Compliance & Certifications


- ASSE 1037-2015
  - ASME A112.1035-2015
  - CSA B125.37-15
-  Listed By IAPMO

For Finish Variations Please Consult Factory

#### Fixture Specification (Model AUT-1012A)

- Complies with ADA Accessible Standards
- White Color
- Vitreous China
- Floor Mount Water Closet Bowl
- Elongated Rim
- 10" (254mm) Rough-In
- 1-1/2" (38mm) I.P.S. Top Spud Inlet
- 2" (50mm) Fully Glazed Trapway
- 11-1/2" (292mm) x 13" (330mm) Water Surface Area
- Direct Feed Jet
- 100% Factory Tested
- Toilet Seat Not Included

#### Compliance & Certifications

- ASME A112.19.2/CSA B45.1
  - Energy Act of 1992
  - ADA- With installation consideration for section 604 Water Closets, Accessibility Guidelines.
  - ICC/ANSI A117.1
  - TAS - With installation consideration for section: 4.16.3. Adult seat height 17" (432mm) to 19" (483mm).
  - CSA B651 - With installation consideration for Clause 4.3.6 of the standard.
  - ICC-ES PMG® Certified
  - WaterSense® Listed
- 

#### Plumbing System Requirements

- Minimum Flowing Pressure: 25 PSI
- Maximum Static Pressure: 80 PSI
- Minimum Flow Rate: 25 GPM



### The HYBRIDFLUSH® Advantage

The HYBRIDFLUSH® is a revolutionary full-featured automatic/manual flush valve system. The HYBRIDFLUSH® incorporates a unique patented mechanism that allows for automatic/manual operation for unsurpassed reliability. The patented HYBRIDFLUSH® design allows for a push button to be used as an alternate flush option that is independent of the battery power. The HYBRIDFLUSH® by Advanced Modern Technologies Corporation is the most efficient, economical, and complete automatic flush valve system on the market.



Warranty  
5 Years

**AXIO®**  
TOUCH-FREE TECHNOLOGY

  
ADA Compliant

### Architect/Engineer Approval

|                      |       |
|----------------------|-------|
| Job Name             | _____ |
| Date                 | _____ |
| Model Specified      | _____ |
| Quantity             | _____ |
| Variations Specified | _____ |
| Customer/Wholesaler  | _____ |
| Contractor           | _____ |
| Architect            | _____ |

The information contained in this document is subject to change without notice.  
Revision (10/17)



# HYBRIDFLUSH<sup>®</sup> AUTOMATIC

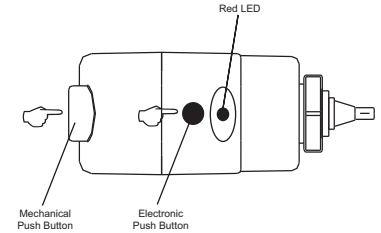
ADA Floor Mount High Efficiency Flush Valve System

Model  
HSM1012AT11

## Specifications

|                           |  |
|---------------------------|--|
| Operation:                | Hybrid (Automatic/Manual)                |
| Outer Casing:             | Standard-Chrome Metal                    |
| Operating Water Pressure: | 15 PSI - 100 PSI                         |
| Sensor Type:              | Infrared                                 |
| Battery Type:             | Four "C" Alkaline Batteries              |
| Battery Life:             | 3+ Years                                 |
| Arming Delay:             | 5 Seconds                                |
| Sensing Range:            | Adjustable, Default Set to 24" (610mm)   |
| Operation Mode:           | Can be Turned On and Off                 |
| Water Saver Mode:         | N/A                                      |
| Flush Delay Mode:         | 3 Seconds Delay Before Activating Flush  |
| 24 Hour Flush Mode:       | Once Every 24 Hours After Last User      |
| Flush Cycle:              | Specified by Model                       |
| Model HSM1012AT11         | 1.1 gpf/4.2 Lpf                          |
| Manual Override:          | Electronic Button/True Mechanical Button |

## Visual Indicator Guide

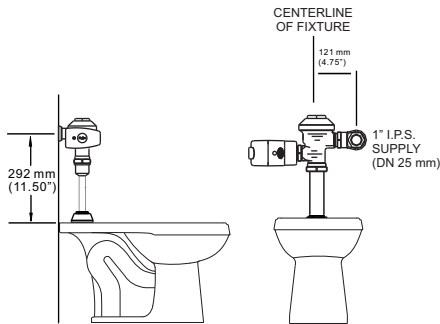


**Red LED** - Constant blinking red LED indicates batteries are low and need replacing.

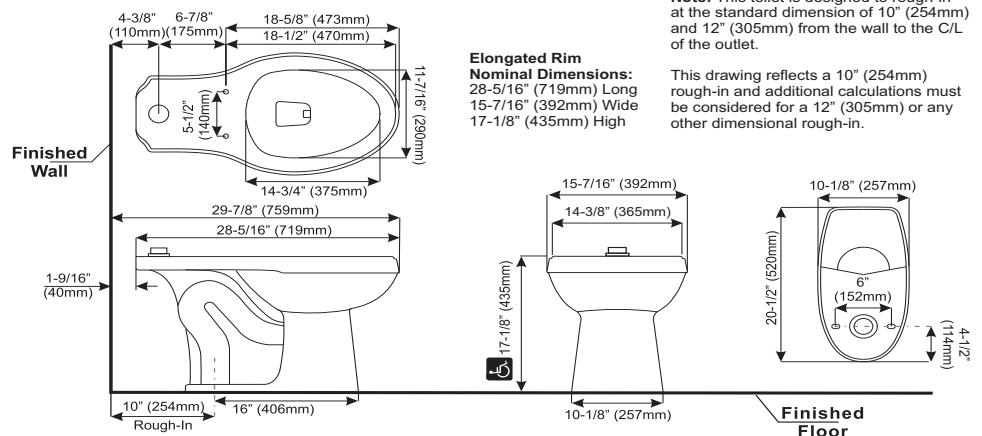
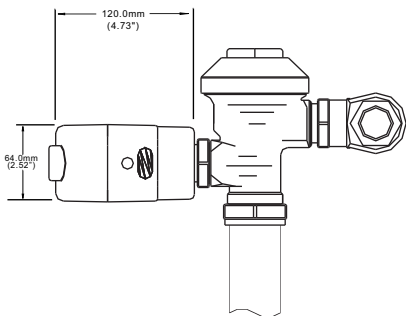
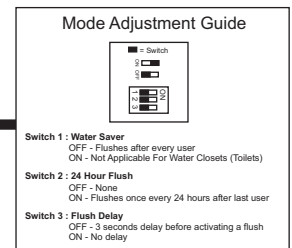
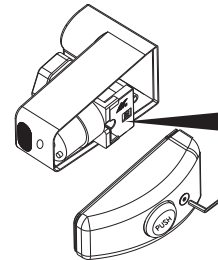
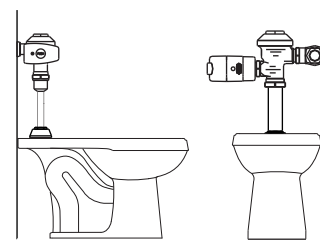
**Electronic Push Button** - Allows manual activation of flush when needed.

**Mechanical Push Button** - Allows manual activation of flush when needed and when batteries are drained.

## Dimensions



## Application



## Disclaimer

Note: All vitreous china dimensions shown in these drawings are nominal and not to scale. Dimensions can vary within the tolerances established in the governing ASME A112.19.2/CSA B45.1 standard. It is important to consider this when planning rough-in and plumbing layouts.

Advanced Modern Technologies Corporation • 19800 Nordhoff Place • Chatsworth, CA 91311  
Tel: (818) 883-2682 • Toll Free: (800) 874-7822 • Fax: (818) 883-2620 • [www.amtcorporation.com](http://www.amtcorporation.com)