



# FIXEDFLO<sup>®</sup>

AUTOMATIC FAUCET SYSTEMS

Model  
AEF-304FF



## Description

High Efficiency, Non-Adjustable, Sensor Operated, Gear Motor Driven, Chrome Plated Brass Wall Mounted Automatic Faucet System For Tempered or Hot/Cold Water Operation

## Flow Rate

- 0.35 gpm/1.3 Lpm Spray Head (Cal Green Compliant)
- 0.5 gpm/1.9 Lpm Spray Head

## Specifications

- Chrome Plated Solid Brass Wall Mounted Spout (Standard)
- Less Than 0.25% Lead Content by Weighted Average
- Patented BRV<sup>®</sup> and Gear Motor Drive
- Hands Free Infrared Sensor Activation
- Powered by Four (4) C-Cell Batteries (Included)
- Easy Battery Replacement - No Water Shut Off Necessary
- Removable Filtering System (Easily Cleaned)
- 1 Second Shut Off Delay
- Adjustable Digital Sensing Range: 2"(55mm) - 12"(300mm)
- Automatic Water Flow Shut-Off: 10 Seconds
- Operating Water Pressure: 10-125 PSI
- Easy Installation
- **ASME A112.18.1-2012 and CSA B125.1-12 Compliant**
- **Safe Water Drinking Act Compliant**
- **California Energy Commission (CEC) Compliant**
- **Living Buildings Challenge (LBC) DECLARE. Compliant**
- **ADA Compliant**

## Accessories (Add suffix to model number for accessories)

### Alternate Power Options

- HG01 Plug-in Hydro-Power Electric Generator
- AD01 Plug-in 6-Volt AC Power Adapter

### Temperature Mixing Valves

- MV Mechanical Mixing Valve (Below Deck)
- TMV Thermostatic Mixing Valve (Below Deck)

For Finish Variations Please Consult Factory



## The FIXEDFLO<sup>®</sup> Advantage

The FIXEDFLO<sup>®</sup> is the first and only high-efficiency faucet (HEF) system providing ultimate water savings through non-adjustable or "fixed" water flow. The FIXEDFLO<sup>®</sup> sensor faucet system does not use a typical diaphragm. Instead a uniquely designed internal water flow mechanism allows the faucet to stream at a pre-set flow rate that cannot be externally altered even by the use or replacement of an aerator. The FIXEDFLO<sup>®</sup> sensor faucet system is available in 0.35gpm and 0.5gpm water flow rates. The FIXEDFLO<sup>®</sup> line is ideal for all public facilities where water conservation is a priority.

The unique design of the FIXEDFLO<sup>®</sup> sensor faucet system allows for the use of various power options including battery power, electrical power (with battery back-up), or an environmentally friendly hydro-generator.



UPC and Low Lead Compliant



Warranty  
5 Years



### Architect/Engineer Approval

|                      |       |
|----------------------|-------|
| Job Name             | _____ |
| Date                 | _____ |
| Model Specified      | _____ |
| Quantity             | _____ |
| Variations Specified | _____ |
| Customer/Wholesaler  | _____ |
| Contractor           | _____ |
| Architect            | _____ |



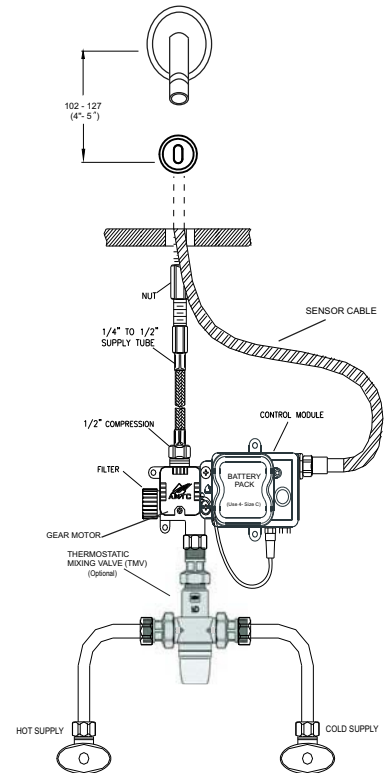
# FIXEDFLO<sup>®</sup>

## AUTOMATIC FAUCET SYSTEMS

Model  
AEF-304FF

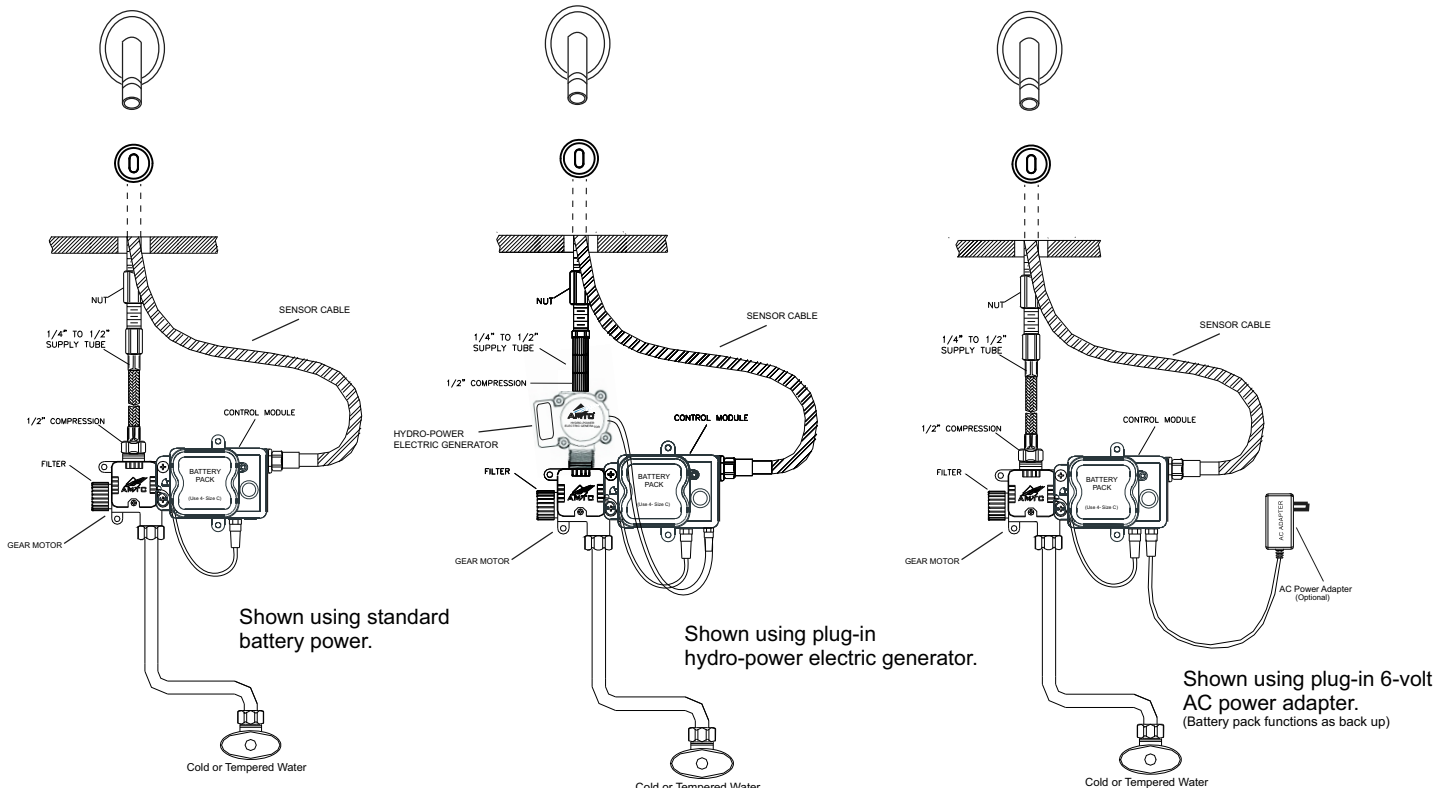
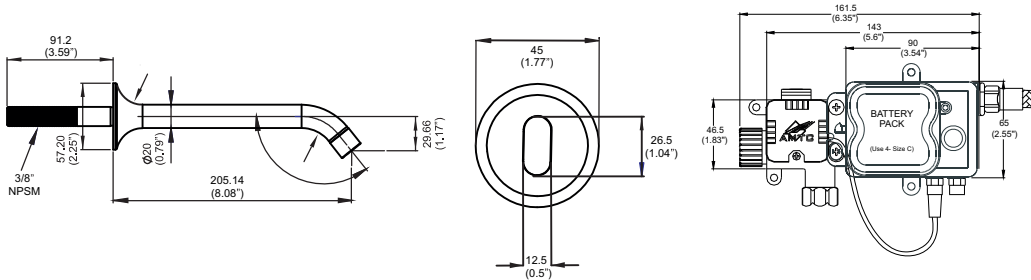
### Specifications:

|                             |  |
|-----------------------------|--|
| Operation:                  | Automatic (Gear Motor Drive)           |
| Spout:                      | Solid Brass Spout                      |
| Mounting Applications:      | Wall Mounted                           |
| Sensor Type:                | Infrared                               |
| Battery Type:               | Four (4) C-Cell                        |
| Battery Life:               | 400,000 Cycles or 3 Years              |
| Alternate Power (optional): | Plug-in 6-Volt AC Power Adapter        |
|                             | Plug-in Hydro-power Electric Generator |
| Working Water Pressure:     | 10-125 PSI                             |
| Supply Inlet Size:          | 1/2" Supply Inlet                      |
| Temperature Control:        | None (use TMV to mix hot/cold water)   |
| Pop-Up Drain Rod:           | None                                   |
| Sensor Location:            | Below Spout                            |
| Sensor Range Setting:       | Digital Push Button                    |
| Sensing Range:              | 2"(55mm) - 12"(300mm)                  |
| Shut-Off Delay Time:        | 1 Second                               |
| Automatic Shut-Off Time:    | 10 Seconds                             |
| Low Battery Indicator:      | Solid Red Light on Sensor              |



Shown using hot and cold water mixing

### Dimensions:



Advanced Modern Technologies Corporation • 19800 Nordhoff Place • Chatsworth, CA 91311

Tel: (818) 883-2682 • Toll Free: (800) 874-7822 • Fax: (818) 883-2620 • [www.amtccorporation.com](http://www.amtccorporation.com)